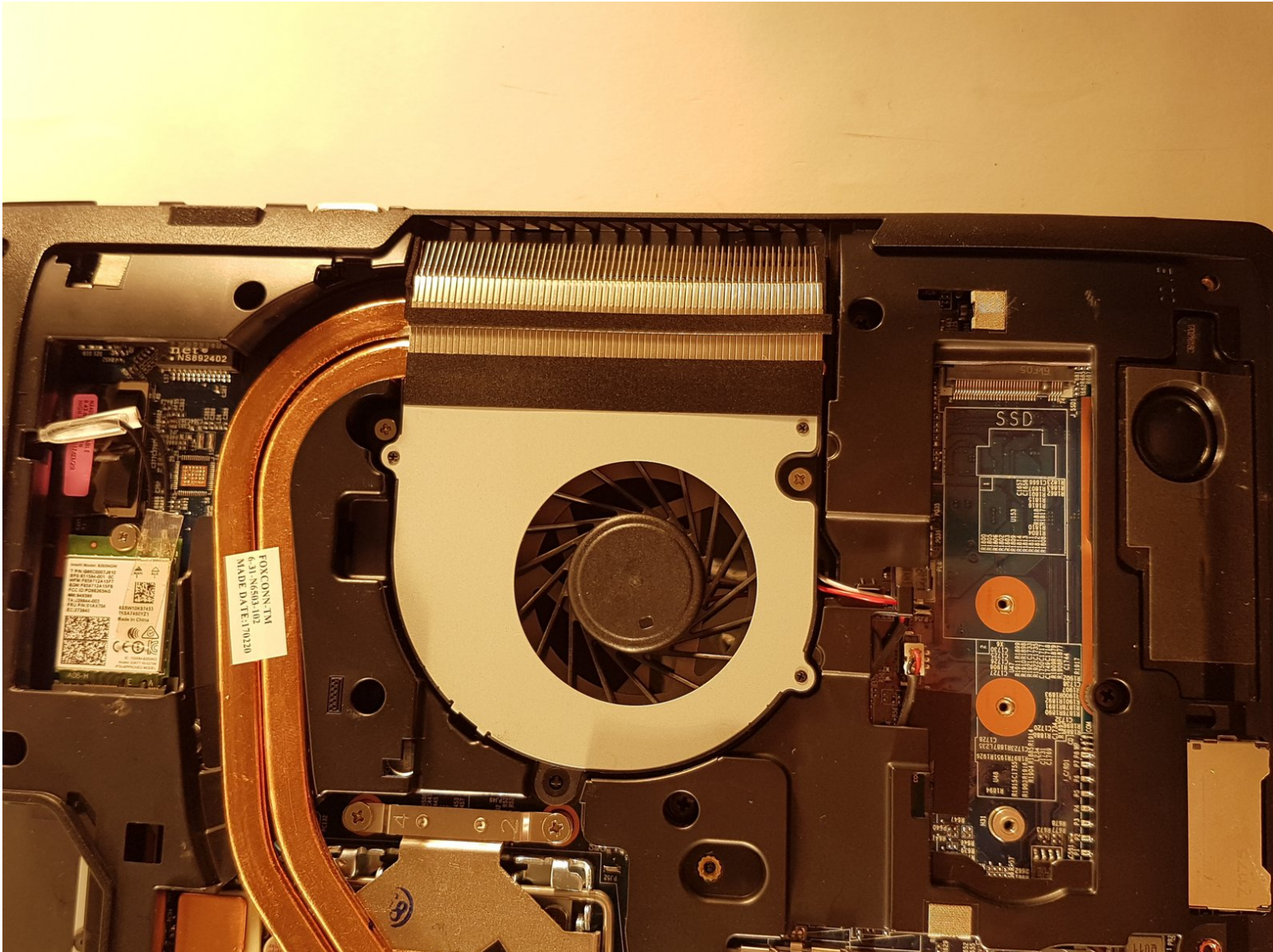




WHY! N650DU The fan

Written By: Felice Suglia





TOOLS:

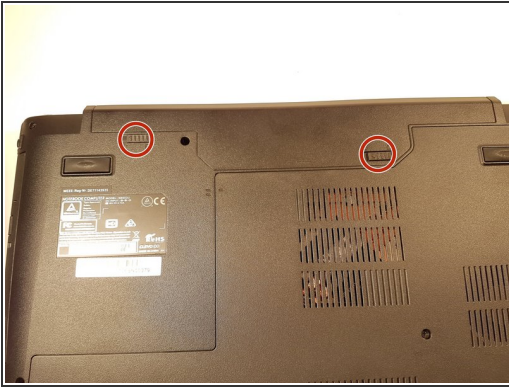
- [Tournevis Cruciforme PH1](#) (1)



PARTS:

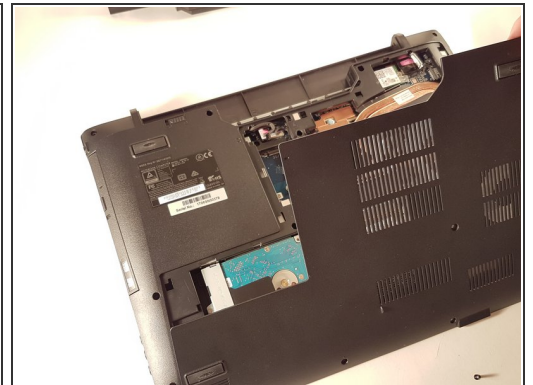
- [New Item](#) (1)
- [New Item](#) (1)

Step 1 — The Batteries



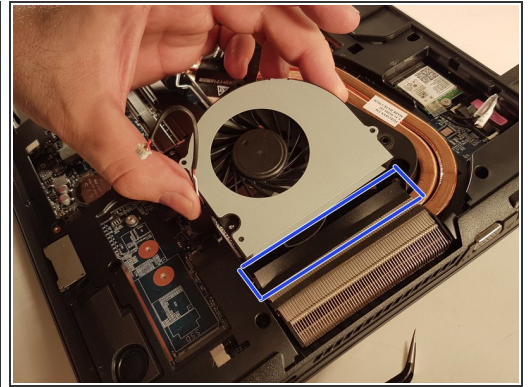
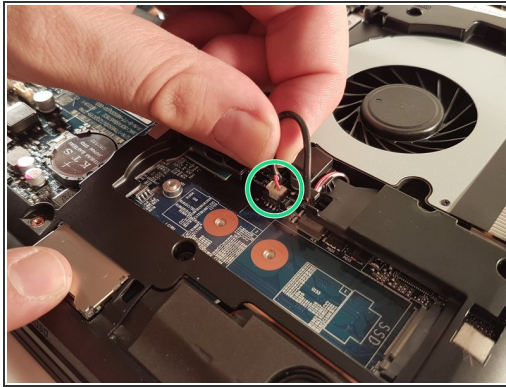
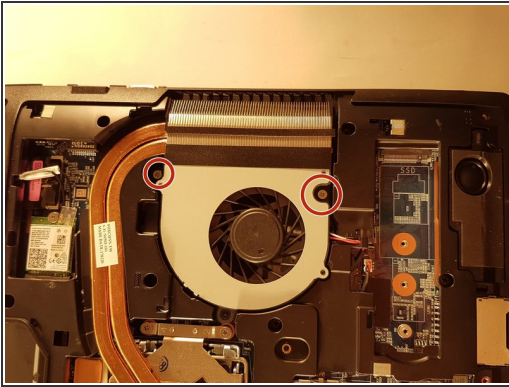
- Unlock the button without spring
- Slide the battery up while unlocking the button with spring

Step 2 — Access to major components



- Unscrew the two large screws circled in red
- Unscrew the two small screws circled in green
- Slide the plate down and lift the

Step 3 — The fan



- Unscrew the two screws circled in red
- Disconnect the connector surrounded in green
- Remove the fan by lifting the blue framed tab

To reassemble your device, Follow these instructions in reverse order.