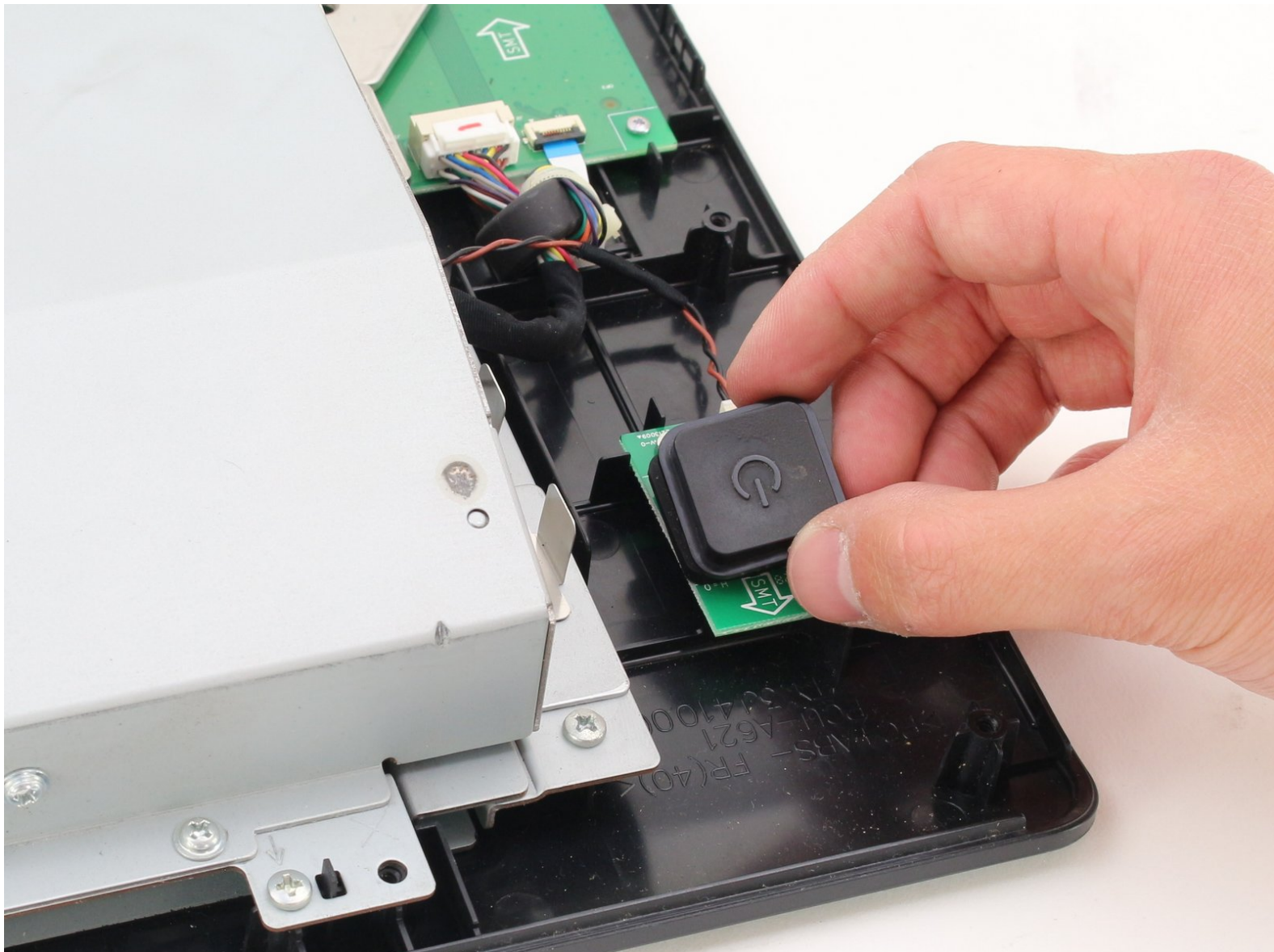




Wacom Cintiq 24HD Power Button Replacement

How to replace the power button on the Wacom Cintiq 24HD.

Written By: Jay Sung



INTRODUCTION

Wear and tear can damage or jam the buttons on the Cintiq 24HD over time. Without the buttons you can not properly use the Cintiq 24HD. This guide will walk you through replacing the power button.



TOOLS:

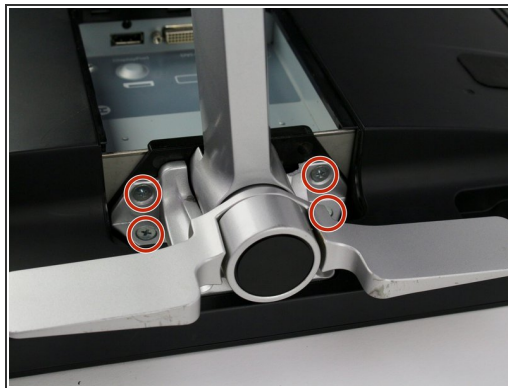
- [Phillips #2 Screwdriver](#) (1)
 - [iFixit Opening Tools](#) (1)
 - [Phillips #1 Screwdriver](#) (1)
-

Step 1 — Stand



- Unplug any cables from the USB, power, display or DVI-D ports by gripping the cord by the connector and pulling straight out of the port.
- ⚠ Unplugging the cables by pulling on the cord or pulling at an angle can damage the cable or connector.

Step 2



- Place the device screen down on a flat surface.
- Remove eight 10mm Phillips #2 screws (four on each leg of the stand) by turning the screwdriver counterclockwise.

Step 3



- Lift the stand up and away from the rest of the device so the legs separate from the mounting plate.

Step 4 — Back Panel



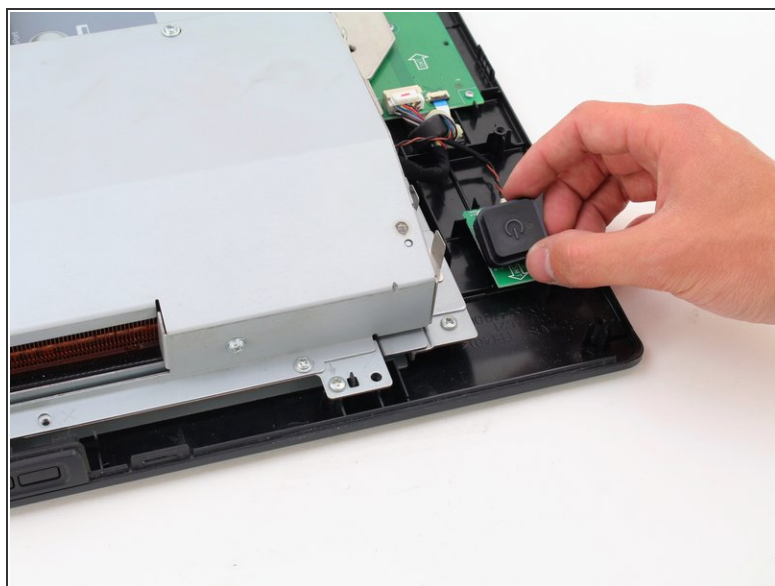
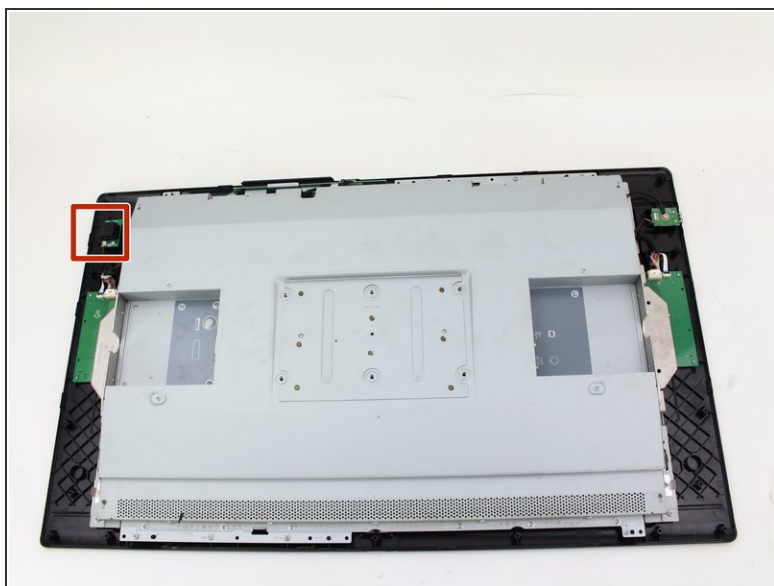
- Remove eighteen 10.2mm Phillips #1 screws from the perimeter of the back panel by turning the screwdriver counterclockwise.
 - Remove one 11.9mm Phillips #1 screw from the center of the back panel.
 - Remove two 10.2mm Phillips #1 screws from underneath hinged panels in the bottom right and left corners.
- i** Our device does not include the cover panels for the USB, DVI-D, and power ports. You must first remove these cover panels shown in green in order to remove the back panel.

Step 5



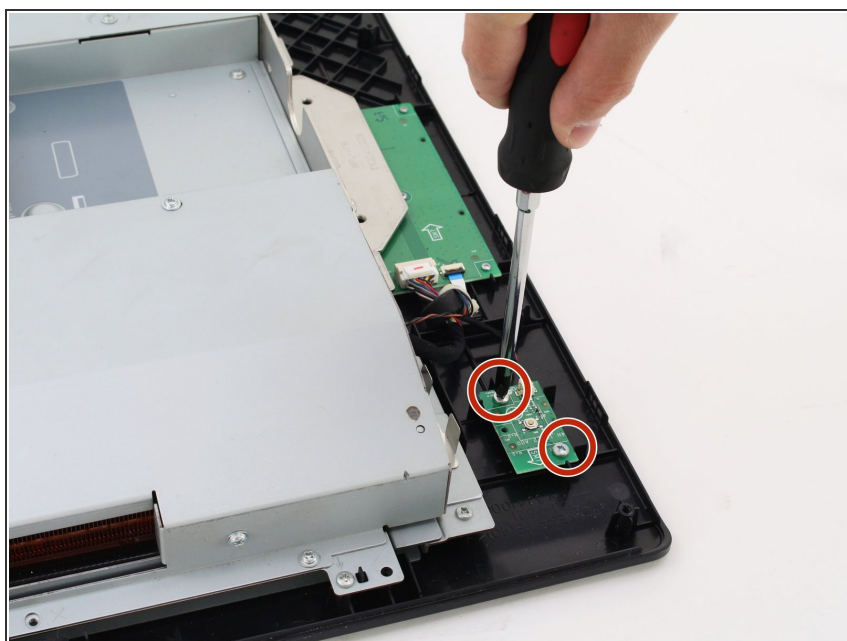
- Lift the back panel up by a corner and insert a plastic opening tool in the gap.
- Slide the tool along the gap around the perimeter of the device while lifting to unlatch the back panel.
- ⓘ The latches on the back panel will make loud clicking noises when opening.
- Remove the panel by lifting it up and off of the device.

Step 6 — Power Button



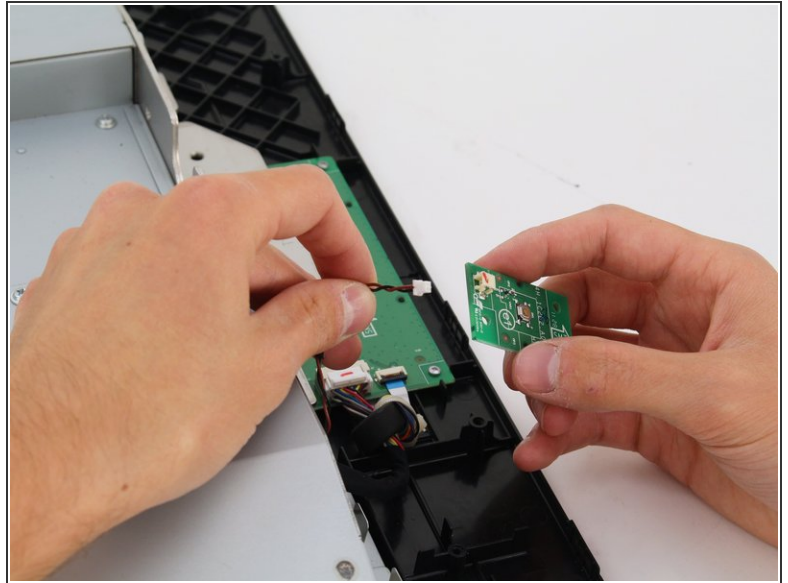
- Remove the rubber cover on the power button by lifting up and off.

Step 7



- Remove the two 9.5mm Phillips #2 screws by turning the screwdriver counterclockwise.

Step 8



- Remove the cable connected to the button board by pinching close to the connector and pulling the wiring straight out from the port.

To reassemble your device, follow these instructions in reverse order.