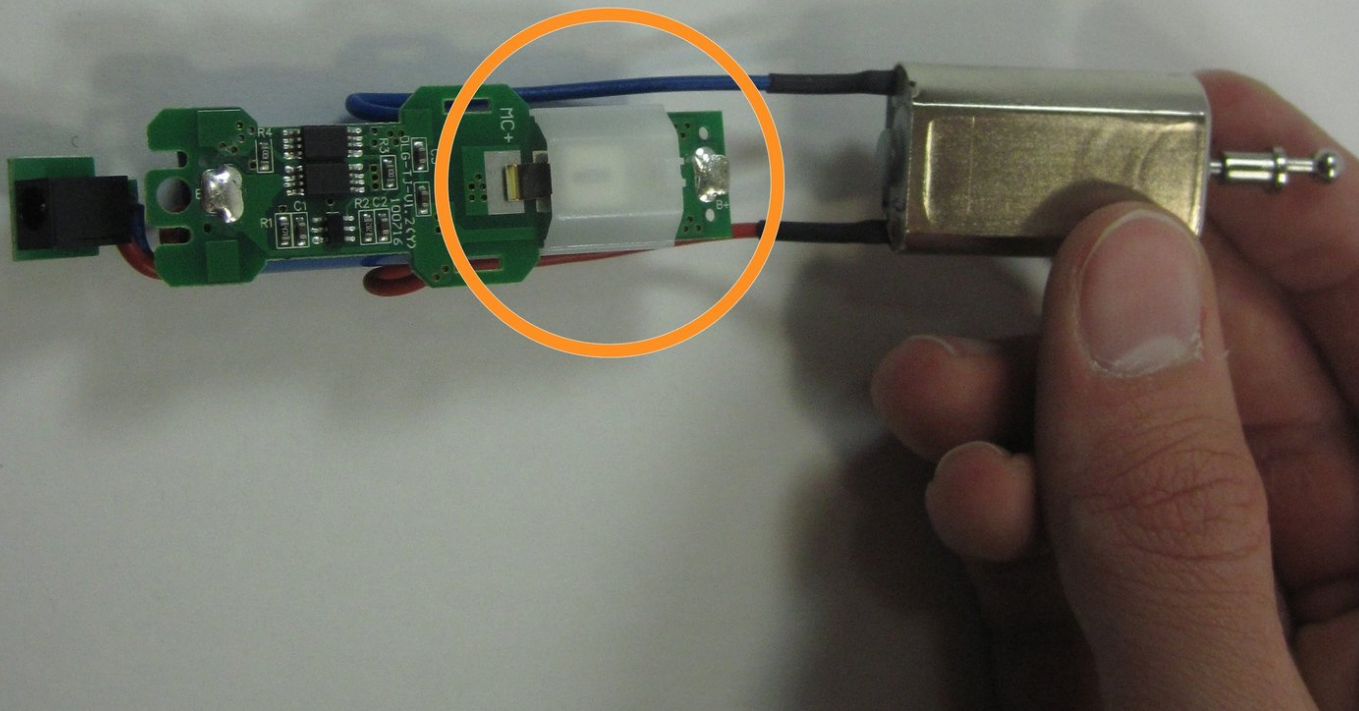




Wahl Lithium Ion Trimmer Slide switch Replacement

This switch could get jammed or broken off.

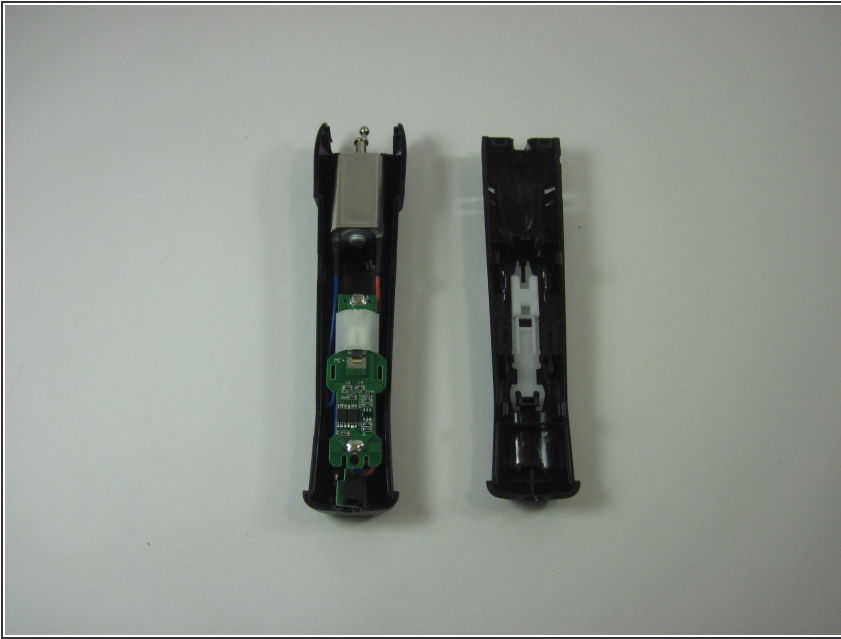
Written By: nathan



INTRODUCTION

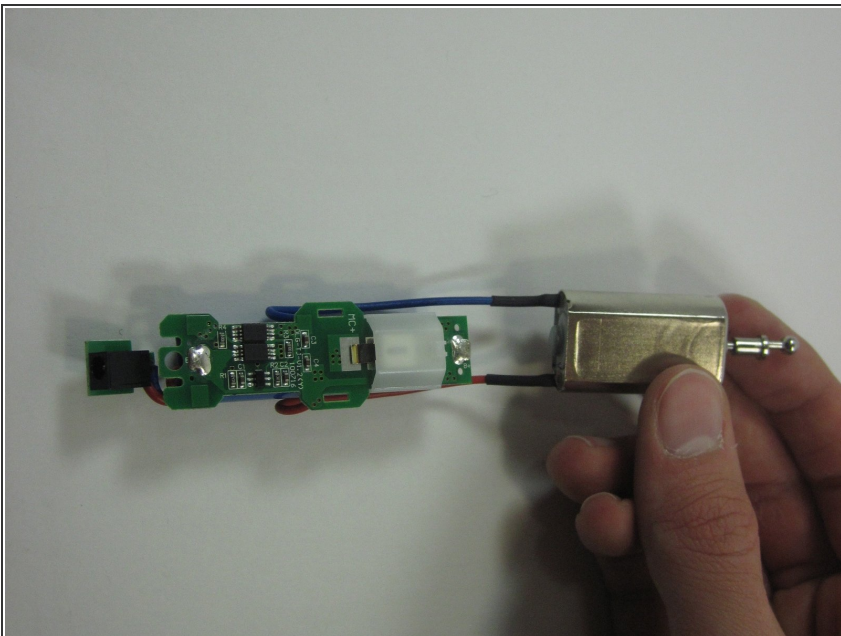
This guide will teach you how to replace the power switch on your razor instead of going and buying a new razor all together. This switch has a plastic mechanism that is connected to the slider from the inside. The plastic switch is in between the battery and motor that controls power. This switch could get jammed or broken off.

Step 1 — Slide switch



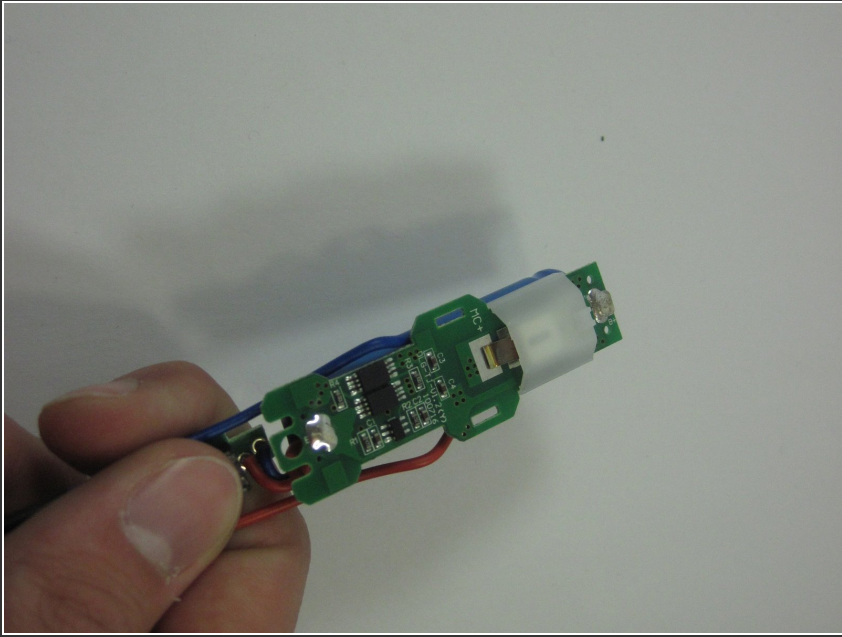
- Start at the last step of the disassembly guide.

Step 2



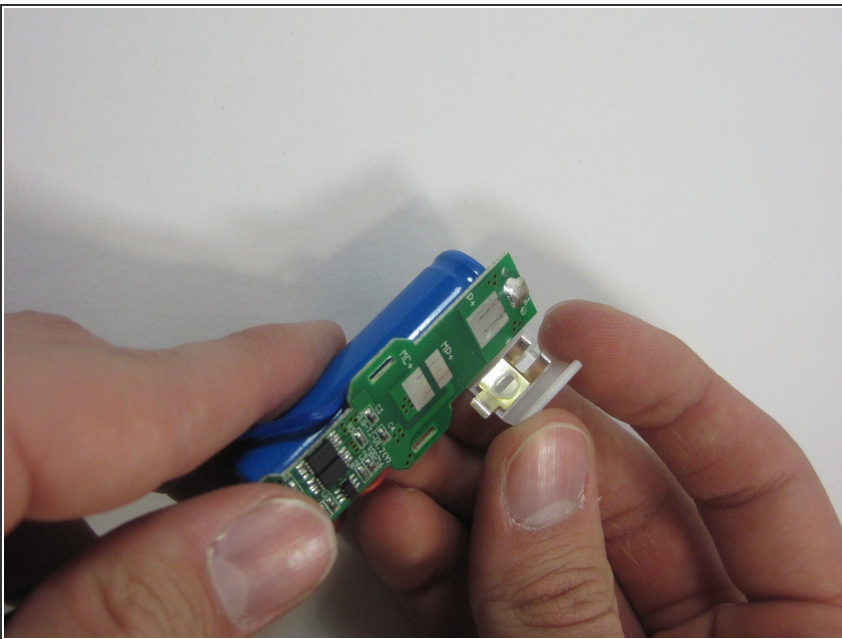
- remove the inside on the razor which includes the chip set, battery, motor and switch.

Step 3



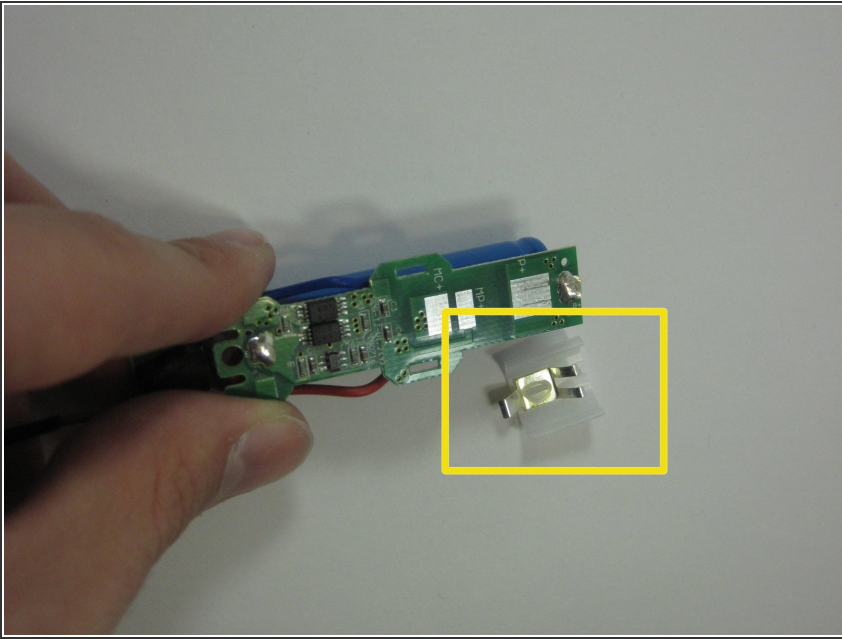
- focus on the chip set and the white piece on top. The white piece is the switch that turns the razor on and off.

Step 4



- Remove the white piece. Be careful doing so because the chip set is delicate and breaking that would result in replacing that as well.

Step 5



- Upon removing the switch, exchange the broken part with the new one that you bought and replace it. Once installed put the razor back together and now you will be able to turn the razor on and off.

To reassemble your device, follow these instructions in reverse order.