



Wahl Professional Designer Blade Replacement

This guide will allow you to easily replace the blade on your device.

Written By: Sophia Swearengin



INTRODUCTION

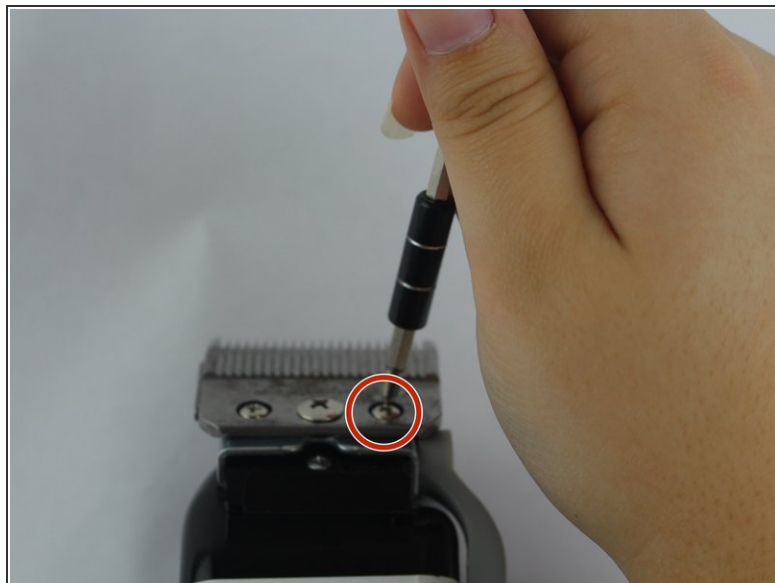
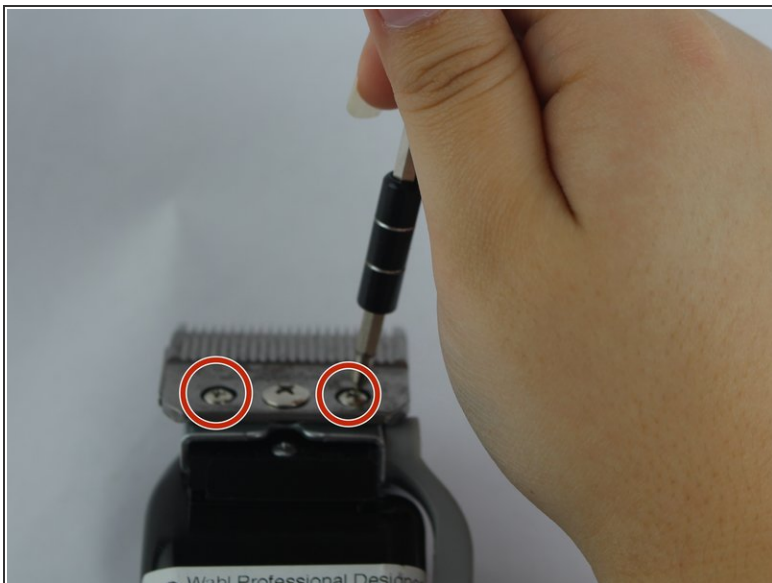
Use this guide to replace the blade on your device.



TOOLS:

- [Phillips #0 Screwdriver](#) (1)
 - [Phillips #1 Screwdriver](#) (1)
-

Step 1 — Blade



- Unscrew the two 3.8 mm Phillip head screws located on the blade using a Phillip's #0 screwdriver.

Step 2



- Unscrew the 6.2 mm Phillip head screw using a Phillip's #1 screwdriver and remove the blade.

To reassemble your device, follow these instructions in reverse order.