



Wahl Professional Designer Motor Replacement

This guide will provide easy to follow instructions in order to replace the motor on your Wahl Professional Designer.

Written By: Sophia Swearengin



INTRODUCTION

Use this guide to replace the motor of your Wahl Professional Designer.



TOOLS:

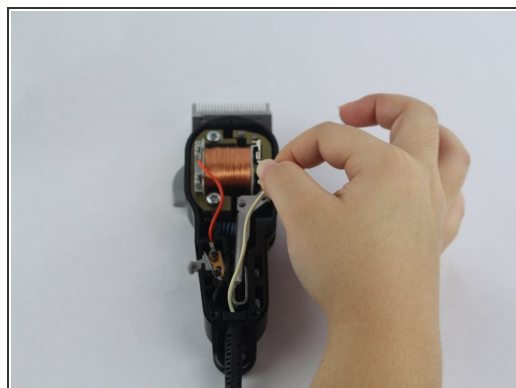
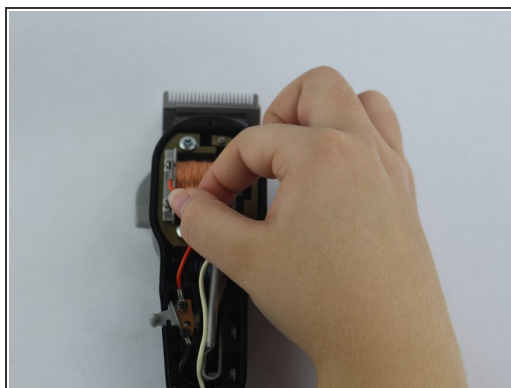
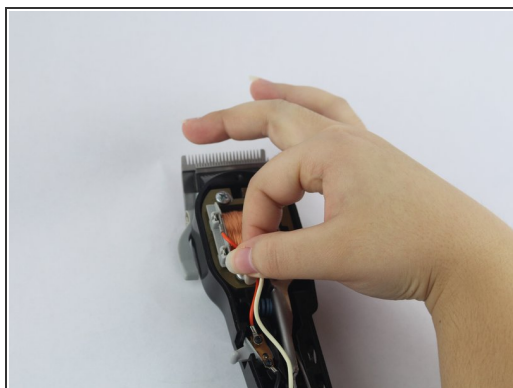
- [Phillips #1 Screwdriver](#) (1)
-

Step 1 — Motor



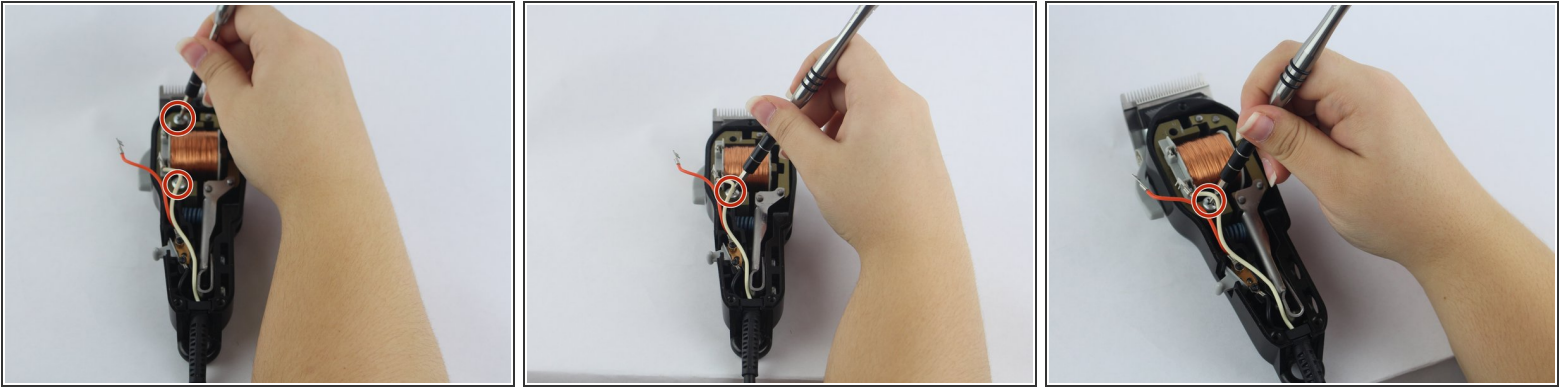
- Unscrew the 12 mm Phillips head screws located at the top of the cover and at the bottom two corners, using a Phillips #1 Screwdriver.

Step 2



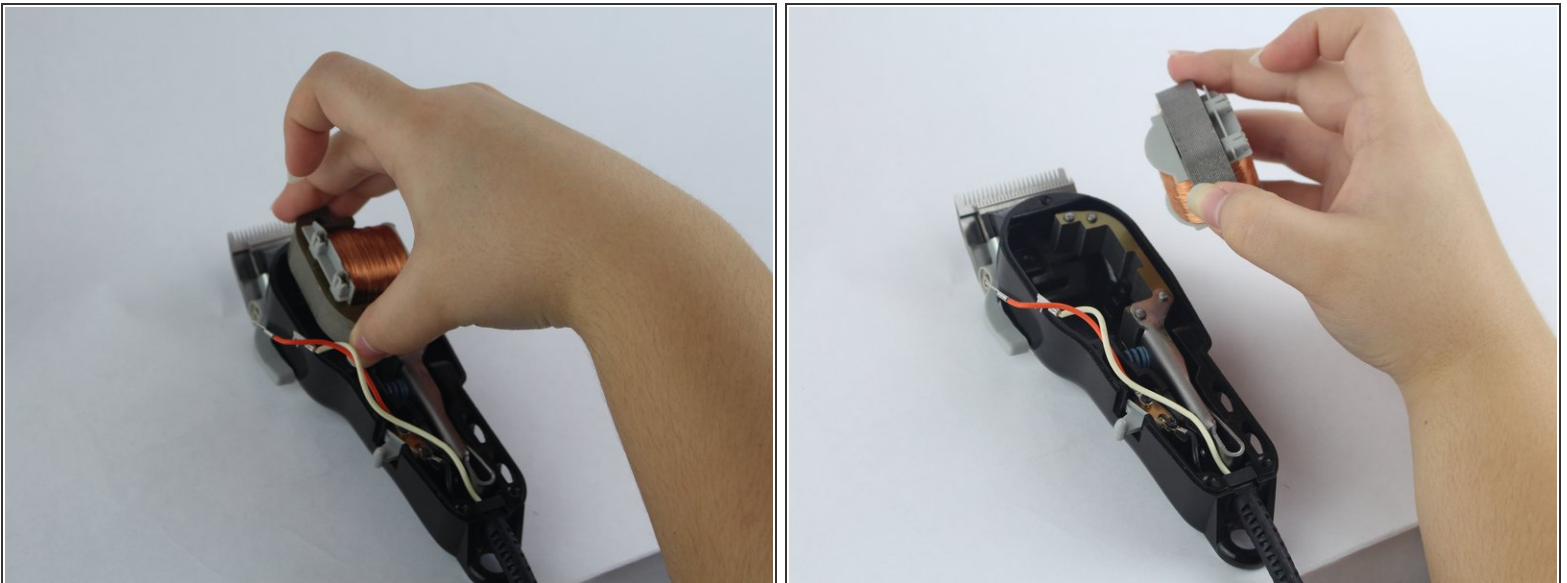
- Remove the wires connected to the motor by firmly grasping both sides of a wire and wiggling until it is released.

Step 3



- Unscrew the two 20.5 mm Phillip head screw located on the motor using a Phillip's #1 screwdriver.

Step 4



- Gently remove the motor from the device.

To reassemble your device, follow these instructions in reverse order.