



Waring 51BL29 Bottom Panel Replacement

How to take off the bottom panel in order to get to the inner components.

Written By: Dean Becker



INTRODUCTION

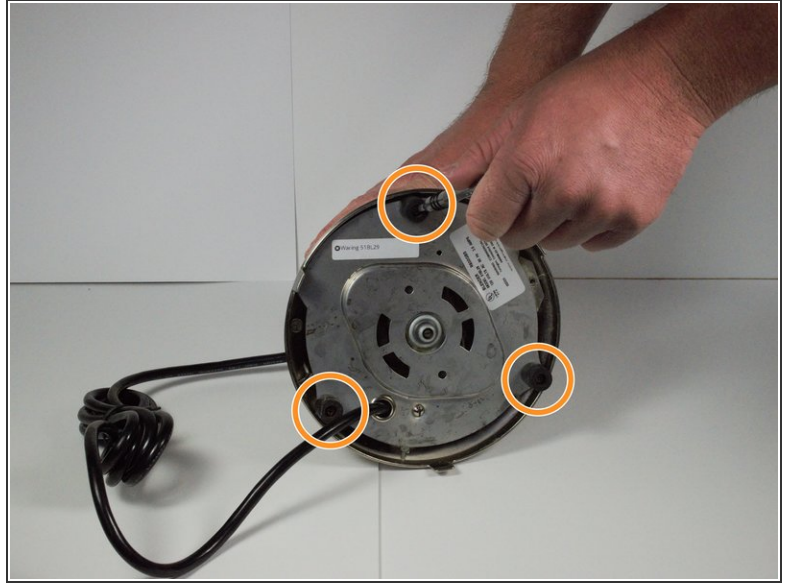
The bottom panel is simply the thin circular metal covering on the bottom of the blender that hides the motor and electrical components. This guide will show you how to remove it so that you can get to the blender's inner components.



TOOLS:

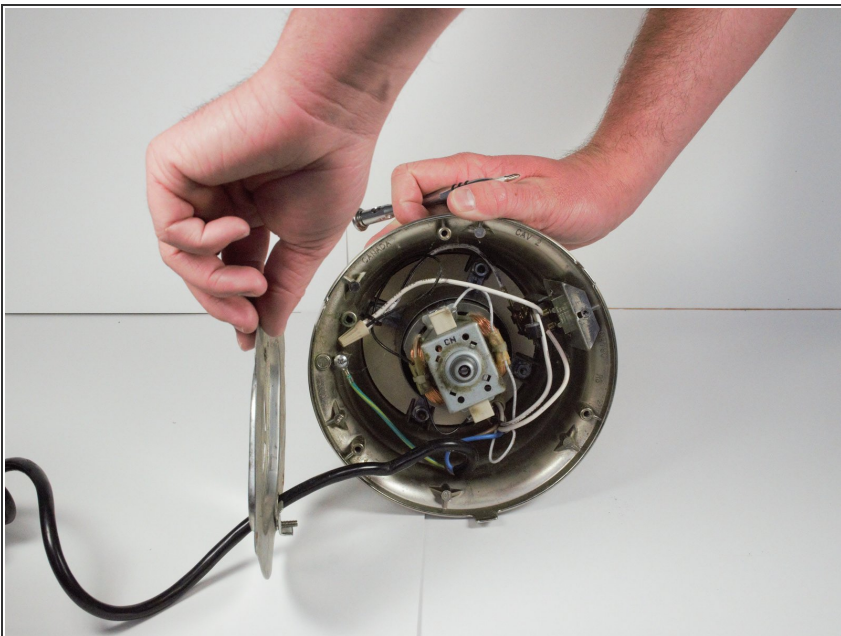
- [Phillips #1 Screwdriver](#) (1)
-

Step 1 — Bottom Panel



- Turn the blender on its side so the bottom panel is facing you.
- Unscrew the 22mm Phillips #1 screw on the indent of the panel.
- Unscrew the 3 screws in the rubber holes.

Step 2



- Remove the bottom panel.

To reassemble your device, follow these instructions in reverse order.