



# Watch Battery Replacement

This guide will show you how to replace a watch battery and will also explain how to preserve the life of your battery.

Written By: TIMONTE HUNTER



---

## INTRODUCTION

I am going to show you how to replace your watch battery and show you how to preserve the life of your new watch battery.



### TOOLS:

- [Flathead 3/32" or 2.5 mm Screwdriver](#) (1)
-

## Step 1 — Battery



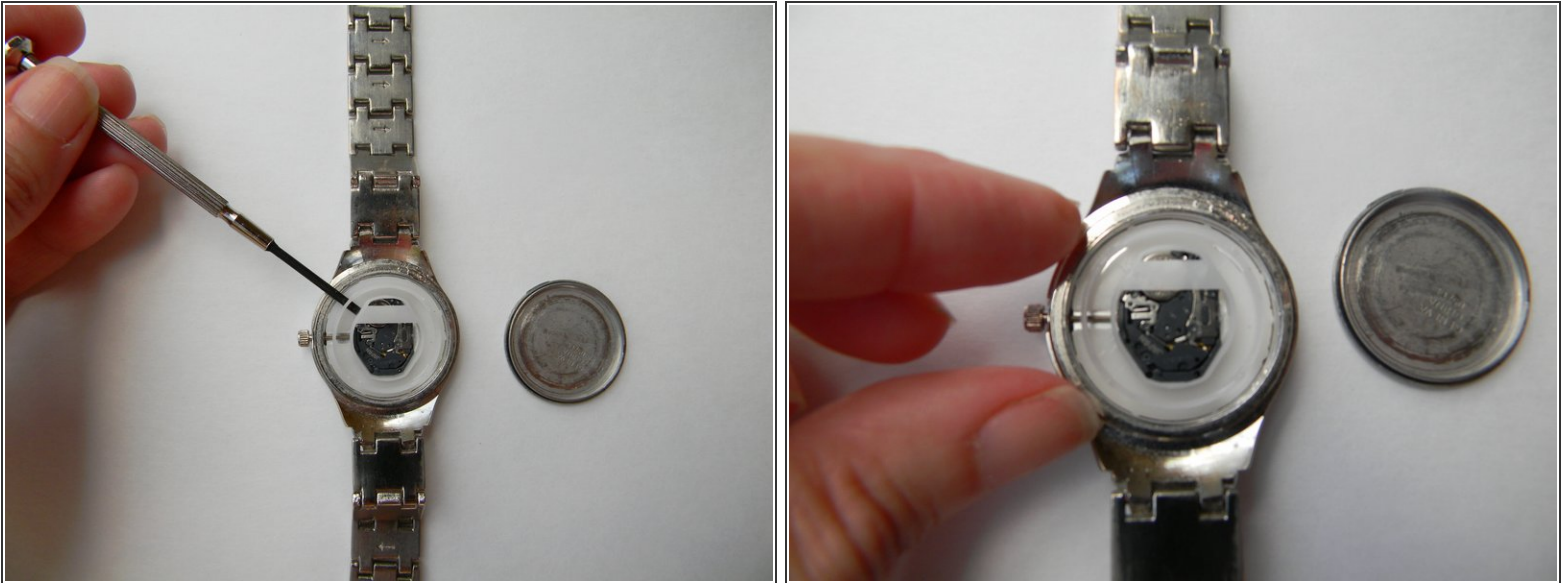
- For this project you will need the watch you are replacing the battery on, the new battery and a mini flat head screwdriver.

## Step 2



- You will need to take the back of the watch off. To do this you will turn the watch over to the back side and look carefully for a small groove opening. This is where you will use the mini flat head screwdriver. Insert the flat head screwdriver into the groove and pop the back off of the watch.

### Step 3



- Take the white plastic ring out of the watch. You can use the mini flat head screwdriver or your finger to pull it out.

### Step 4



- Take the old battery out of the watch. You can use the mini flat head screwdriver to do this.

## Step 5



- Put the new battery in watch. Use your fingers to insert the new battery.

## Step 6



- Use your fingers to insert the plastic white ring back into the watch.

## Step 7



- Put the back of the watch on using your fingers. Press down so that you hear a snap to ensure the back is on properly.

## Step 8



- You are all done and can now set the time on your watch.

## Step 9



- When you are not using the watch, pull the pin out to stop the watch from running

## Step 10



- When the pin is pulled out, the battery is not being used. Only push the pin in and set the time when you

---

are using the watch. This will  
preserve the life of your new battery.

---

To reassemble your device, follow these instructions in reverse order.