



# Watch Strap Buckle Replacement

Watch buckles often come off, become very loose, corrode, or break. This repair guide will help you replace your old buckle with a new one.

Written By: Daisha Paringit



## INTRODUCTION

Anyone have the time? Broken or corroded buckles prevent the use of watches. Perhaps the metal tongue breaks, preventing you from fastening your watch. Or maybe the bar inside the watch band corrodes and the entire buckle falls off. This guide will walk you through the process of replacing metal buckles in a few easy steps with the help of a spring bar tool. This guide is applicable to all types and parts of the metal buckle. To order the correct size buckle refer to the manufacturing site of your watch to begin this replacement!



### TOOLS:

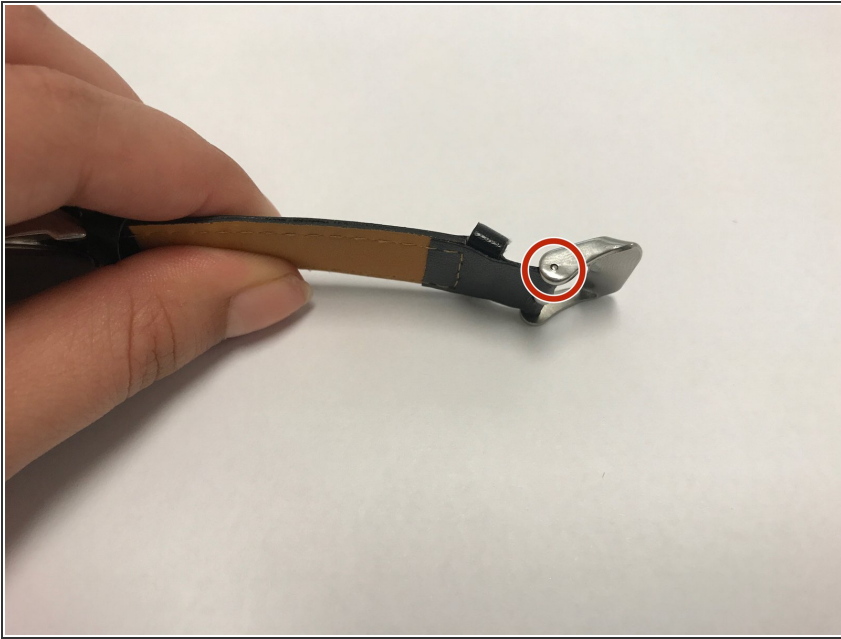
- [Bergeon 6767-F Spring Bar Tool](#) (1)



### PARTS:

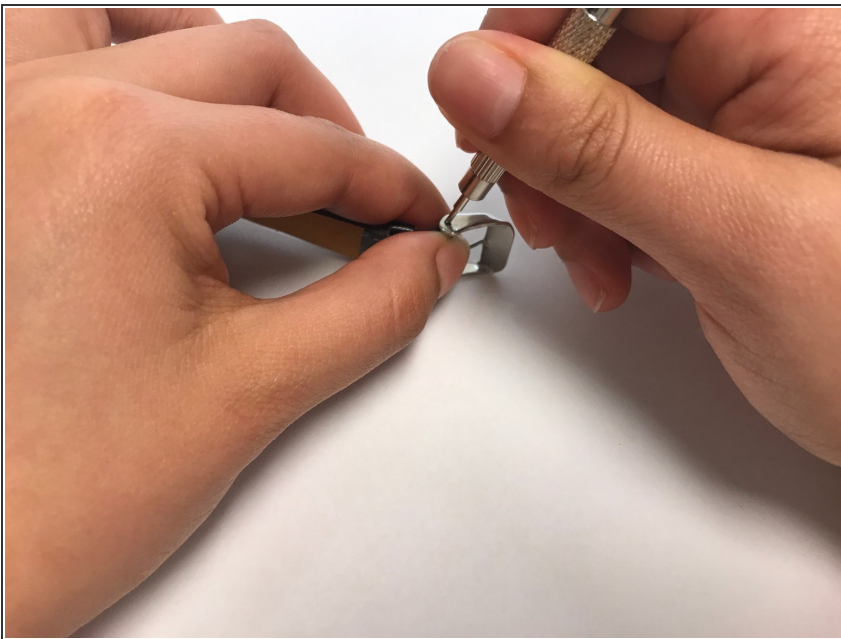
- [Replacement Watch buckle](#) (1)

## Step 1 — Leather Watch Strap Buckle



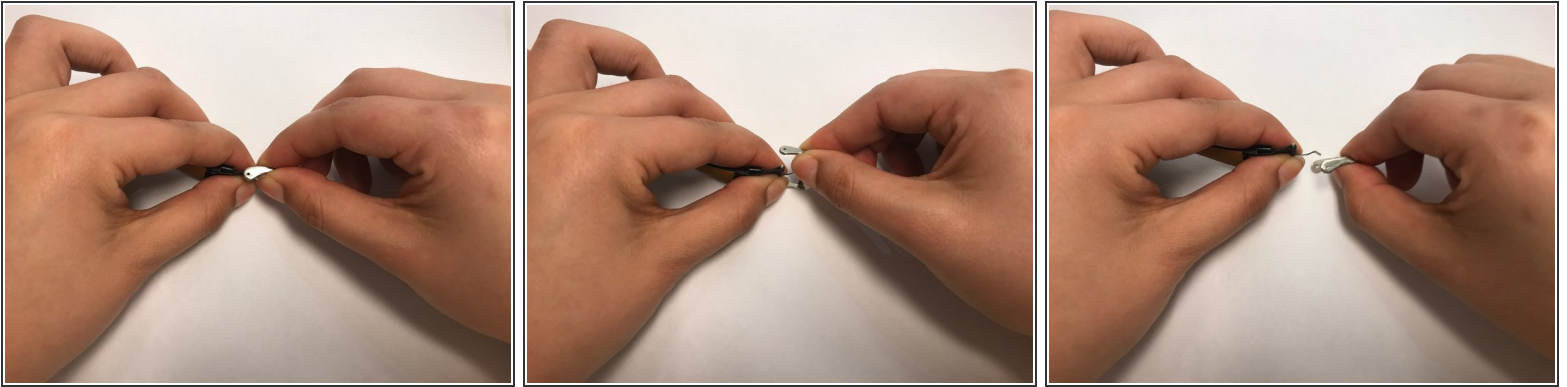
- Hold the spring bar tool in your dominant hand and the watch strap with your non dominant hand.
- Locate the pointed end of the spring bar.

## Step 2



- Insert the pointed end of the spring bar tool into the hole on the side of the buckle.
- Press down on the spring bar and gently push it to the side until the end of the spring bar comes out from under the metal buckle.

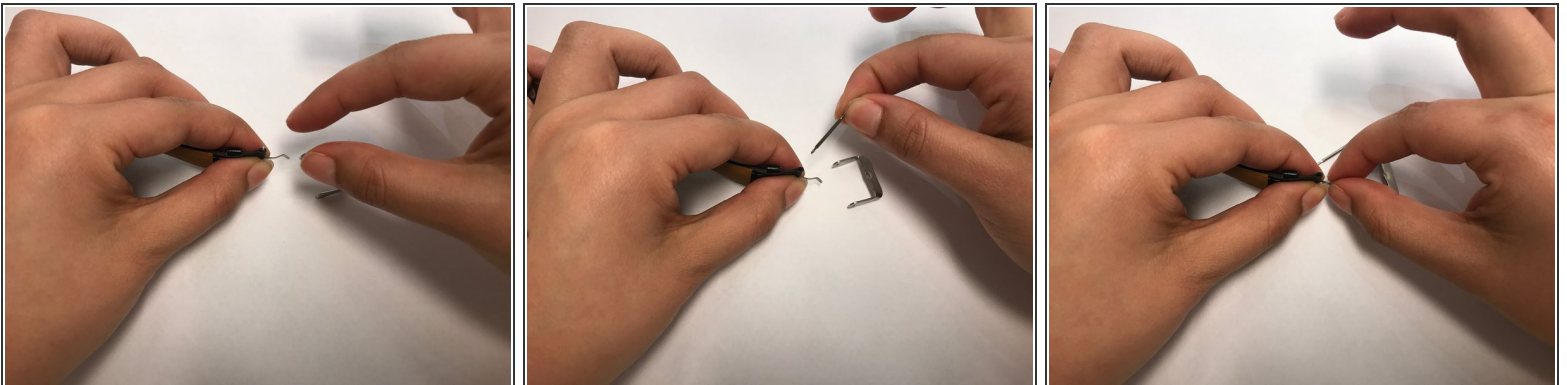
### Step 3



- Remove the U-shaped part of the buckle.

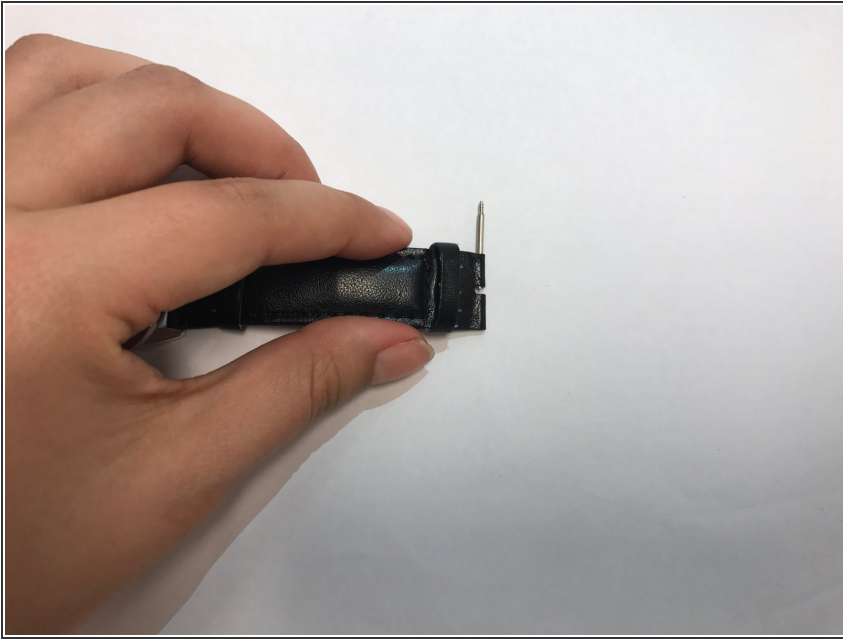
 The spring bar may shoot out.

### Step 4



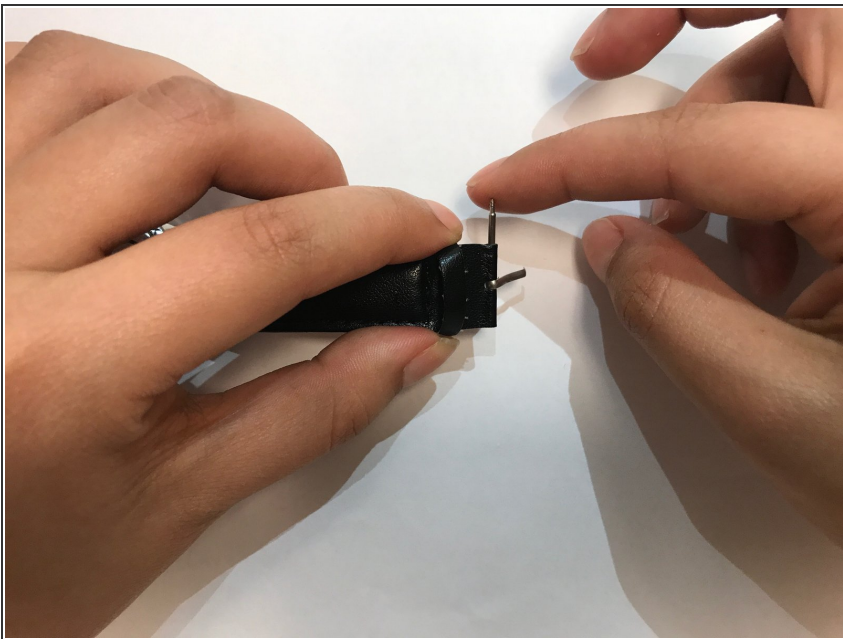
- Remove the spring bar and metal tongue.

## Step 5



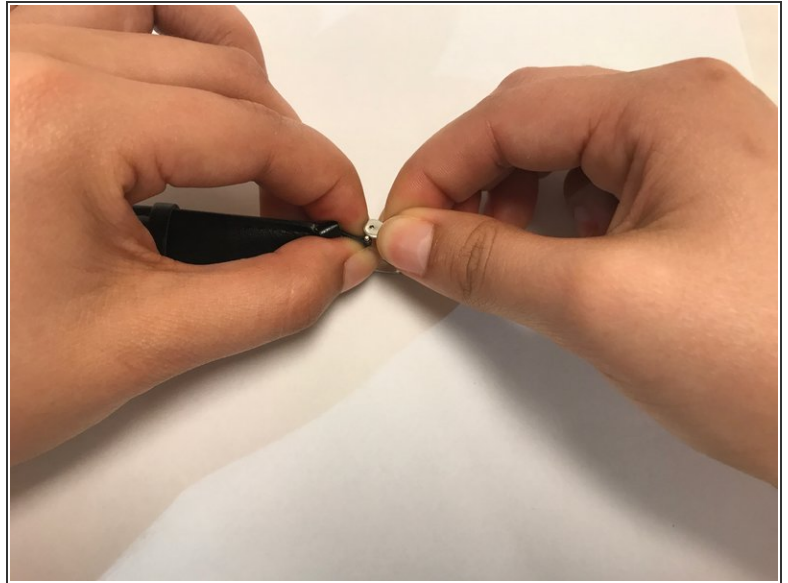
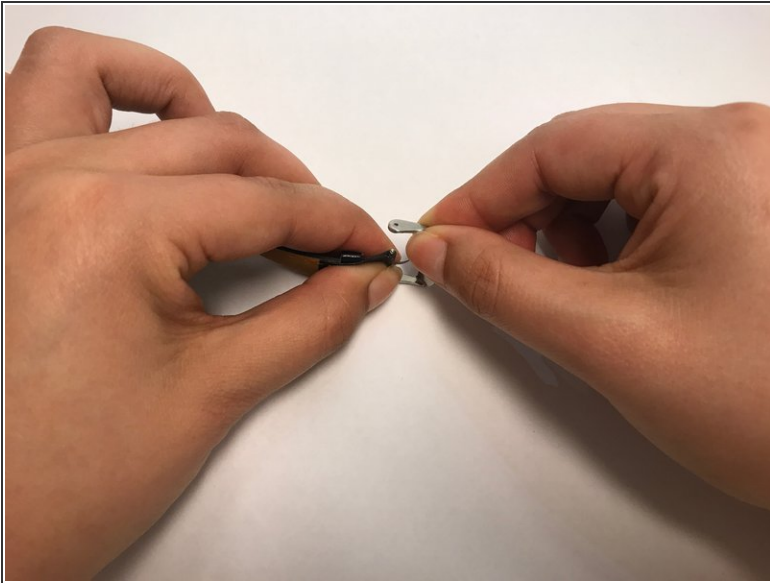
- Insert the new spring bar half way.
- ⓘ Do not cover the center of the buckle. This will prevent the completion of the next step.

## Step 6



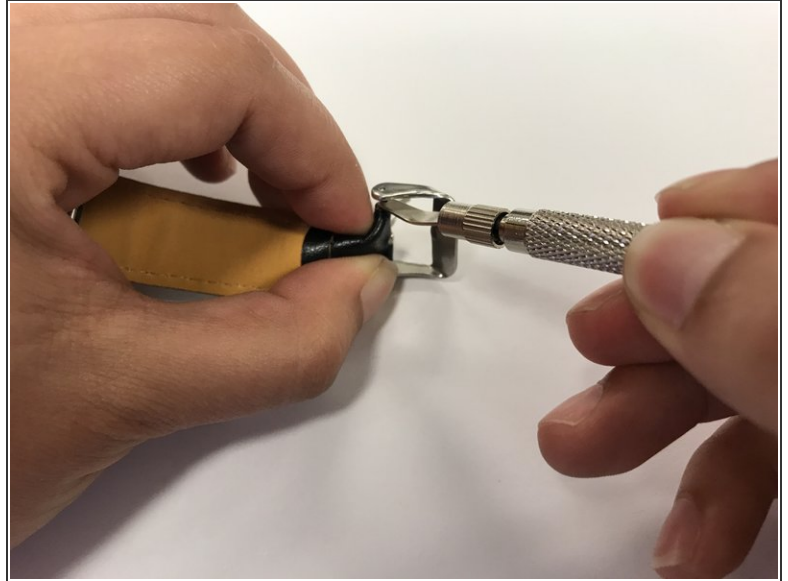
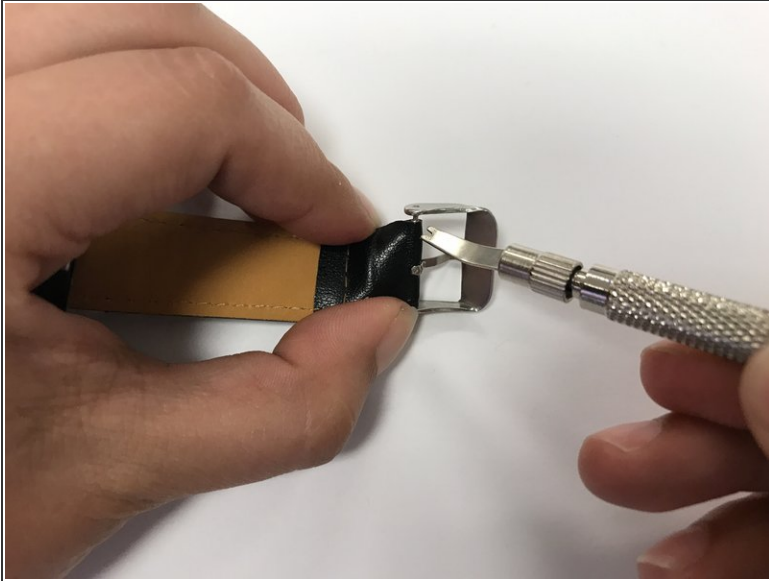
- Insert the new tongue, positioning the end facing down in relation to the watch strap.
- Hold the tongue in place and slide the spring bar through the end of the strap.
- ⓘ You should be able to see both ends of the spring bar.

## Step 7



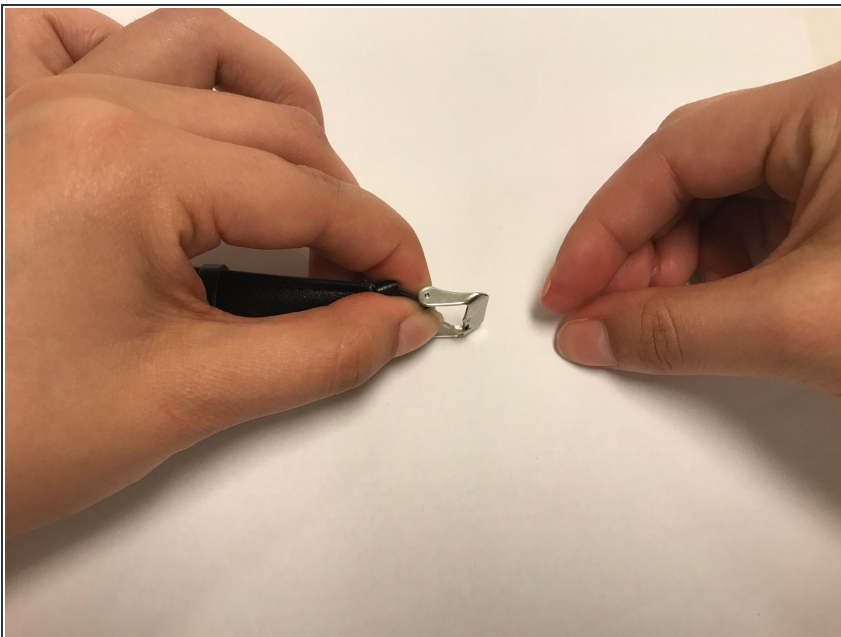
- Holding the spring bar in place, take the U-shaped part of the new buckle and line it up with the ends of the strap.

## Step 8



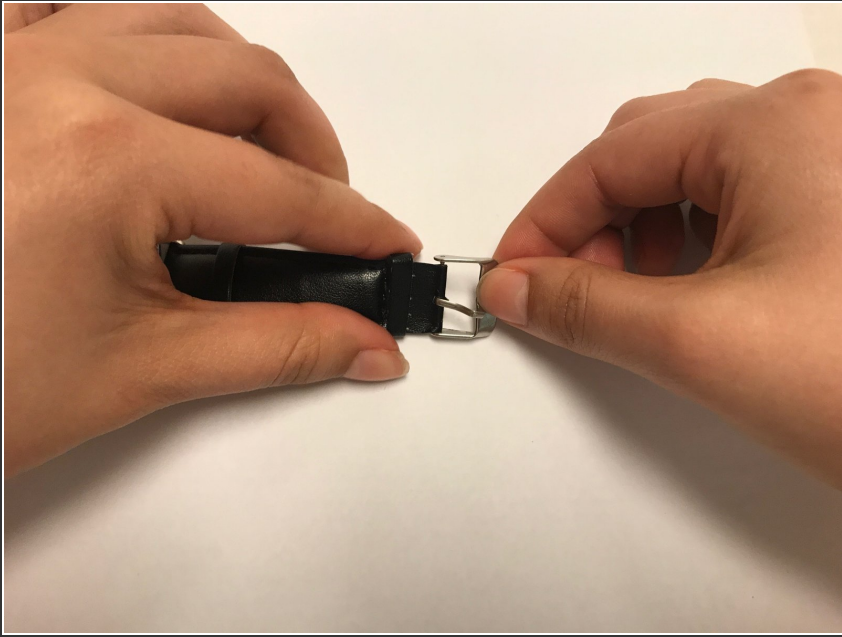
- Insert one end of the spring bar into the U-shaped piece of the buckle.
  - Use the forked end of the spring bar tool to push the spring bar down so you can slide the metal buckle over it.
- i** This will lock in the buckle on each end of the spring bar.

## Step 9



- When the buckle covers the spring bar, gently remove the spring bar tool until you hear the spring bar snap into place.
- i** If you do not hear a snap, move the buckle gently until you hear a snap.

## Step 10



- Give the buckle a few gentle tugs to make sure that it remains in place.
- ⓘ If it does, then you are finished and ready to wear your watch. If the buckle falls off, repeat steps 6-11.