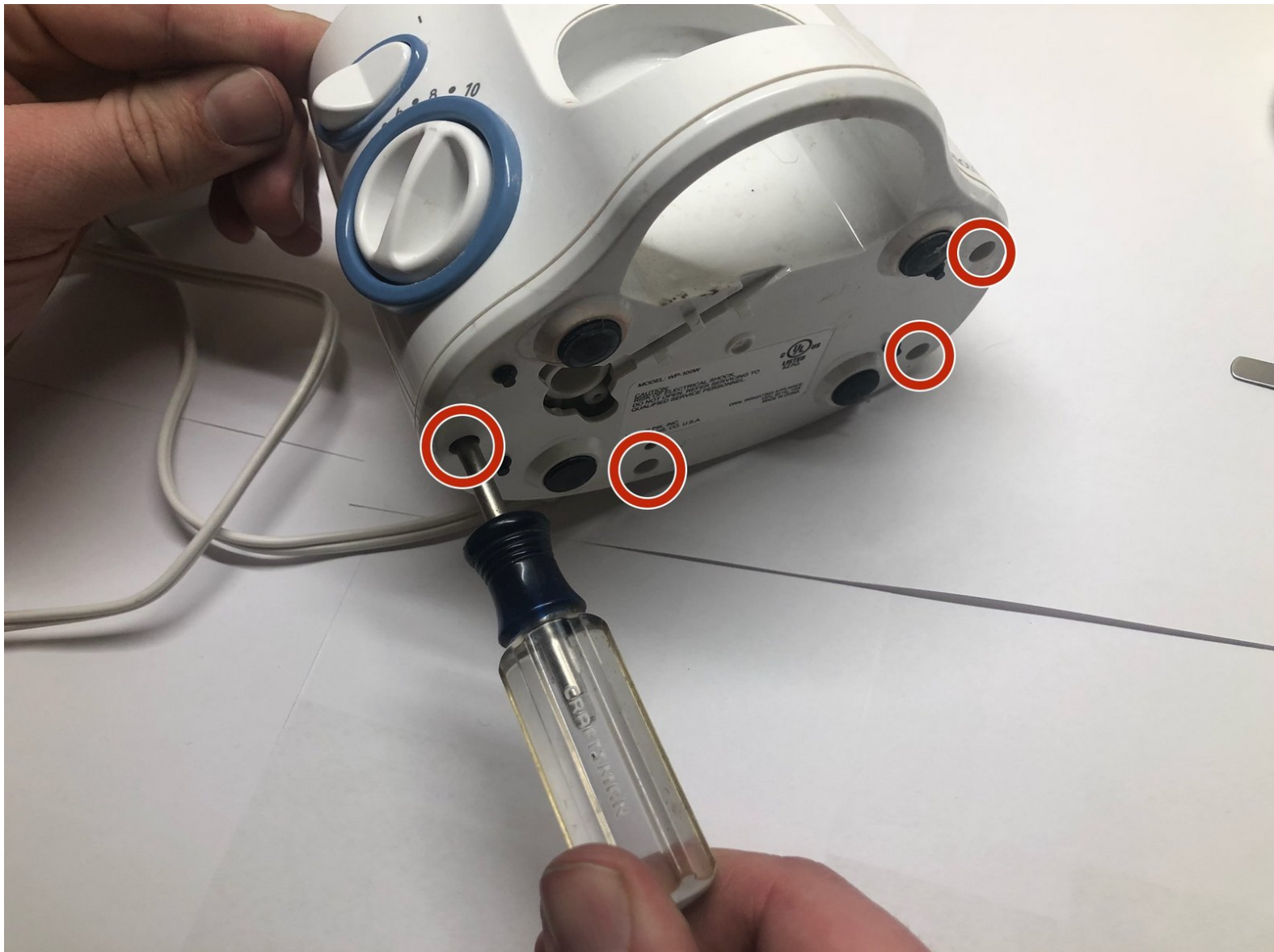




WaterPik (Wp-100W) Pressure Pump O-ring Replacement

How to replace WaterPik (Wp-100W) Pressure Pump O-ring.

Written By: Jereme Nereaux



INTRODUCTION

The WaterPik water flosser is a widely used and popular device for dental hygiene. It is a very simple and straightforward tool used for oral hygiene. Unlike the conventional method of flossing using dental floss the WaterPik uses pressurized water to clean between your teeth and the rest of your mouth. The device relies on a pump to move the water to the handheld wand that is used by the user to clean their mouth. Over time the seals on the pump can begin to degrade and cause leaks between the pieces of the machine. This guide walks through the o-ring replacement from start to finish by explaining the various steps and possible problems along the way and thus ensuring a successful repair.



TOOLS:

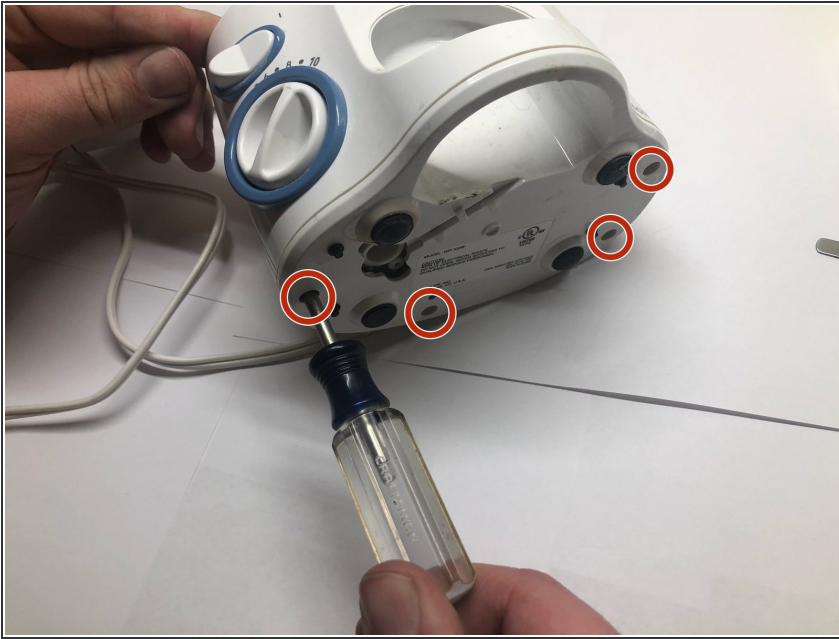
- [Flathead 3/32" or 2.5 mm Screwdriver](#) (1)
- [Phillips #1 Screwdriver](#) (1)
- [O-ring removal tool](#) (1)



PARTS:

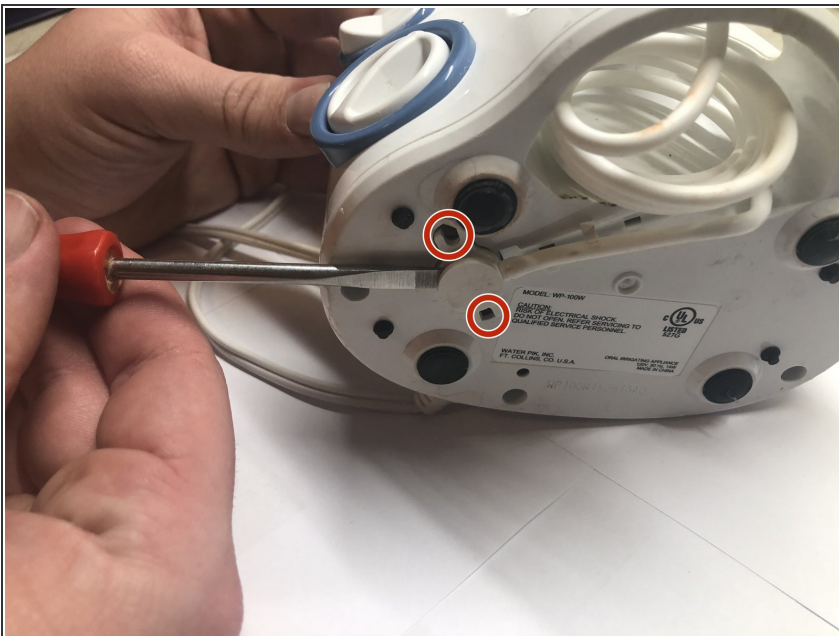
- [Metric O-Ring Set](#) (1)

Step 1 — Pressure Pump O-rings



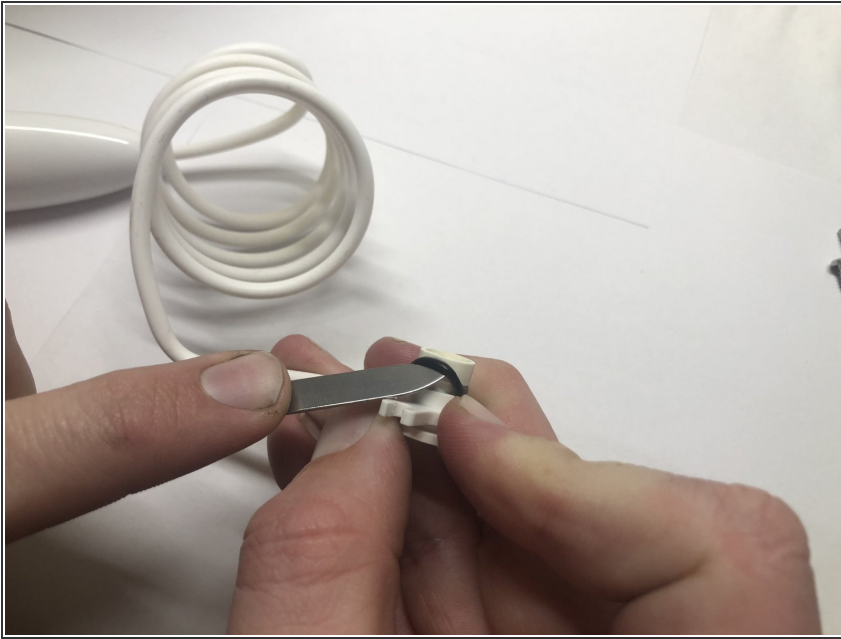
- Make sure the Waterpik is unplugged and away from any electrical outlet.
- ⚠ To prevent electrical shock never begin repairs on device while it is plugged in.
- Remove top tool tray and water tank.
- Laying the unit over on its back remove the four #1 Phillips 6mm screws.

Step 2



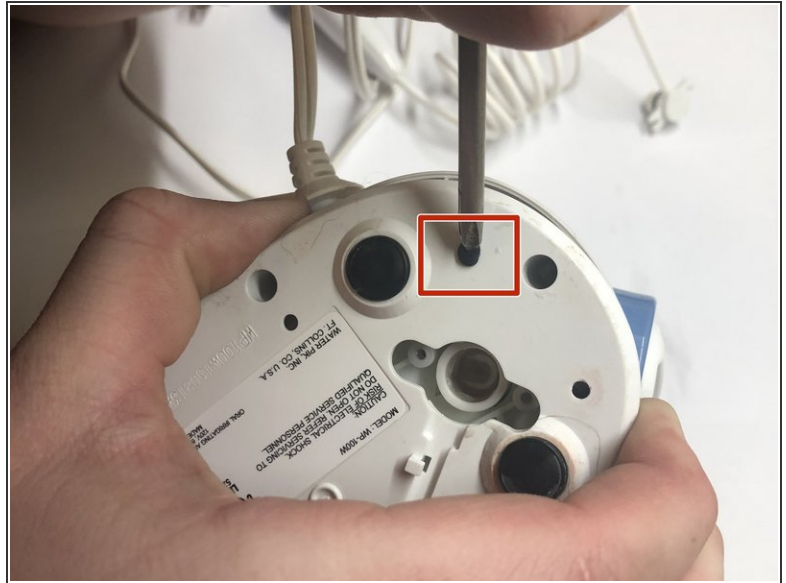
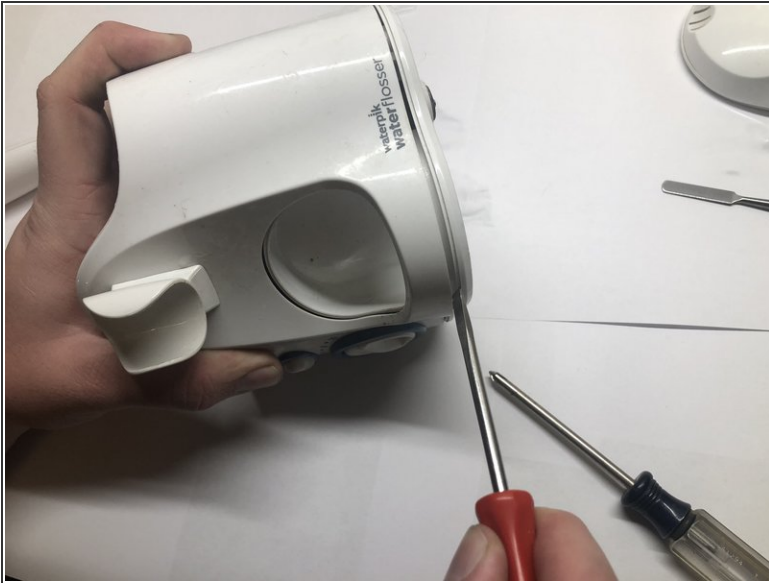
- Remove the two #1 Phillips 4mm screws from the pressure hose housing.
- Using a flattip screwdriver gently pry the pressure hose housing from the base of the unit.
- ⚠ Use gentle pressure when removing pressure hose housing. Excessive force could damage unit.

Step 3



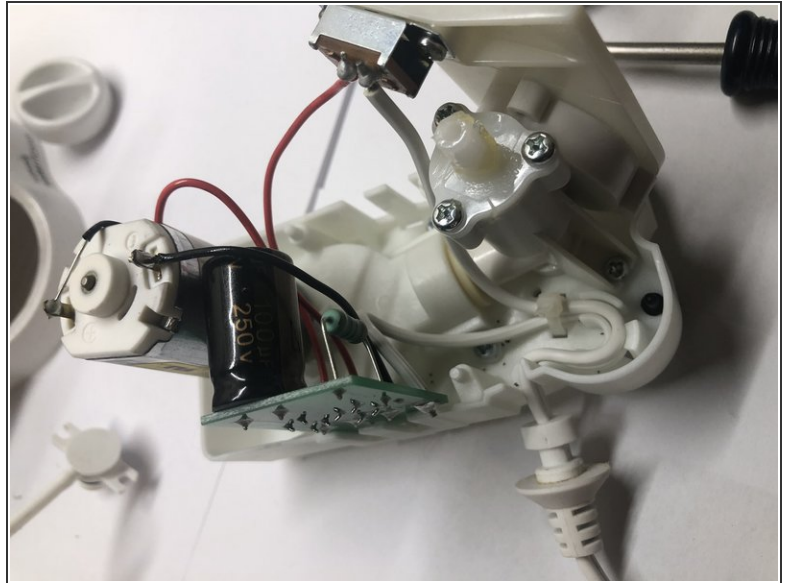
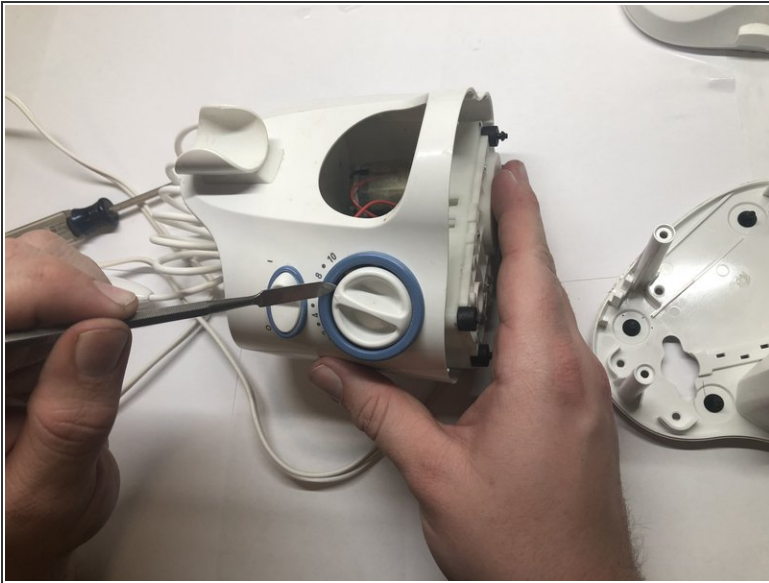
- Using an o-ring removal tool or a small flattip screwdriver carefully remove o-ring from pressure pump housing by gently prying the o-ring over the lip of the housing.

Step 4



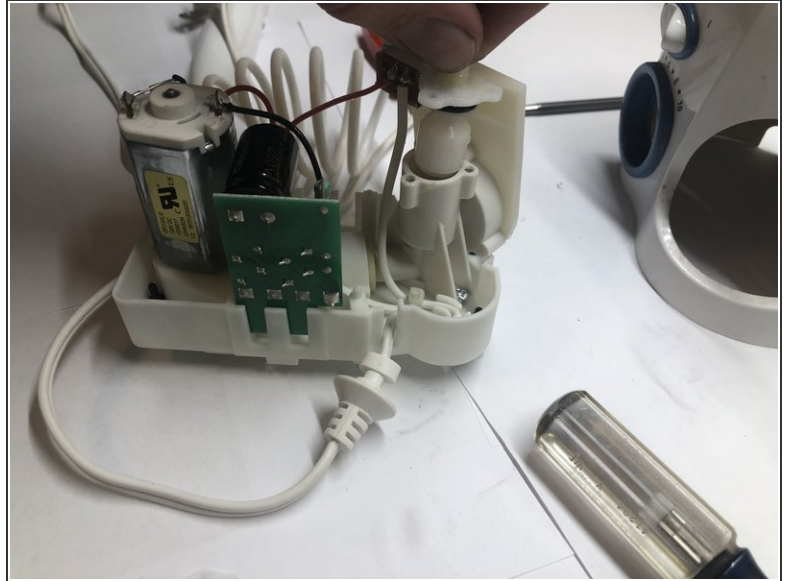
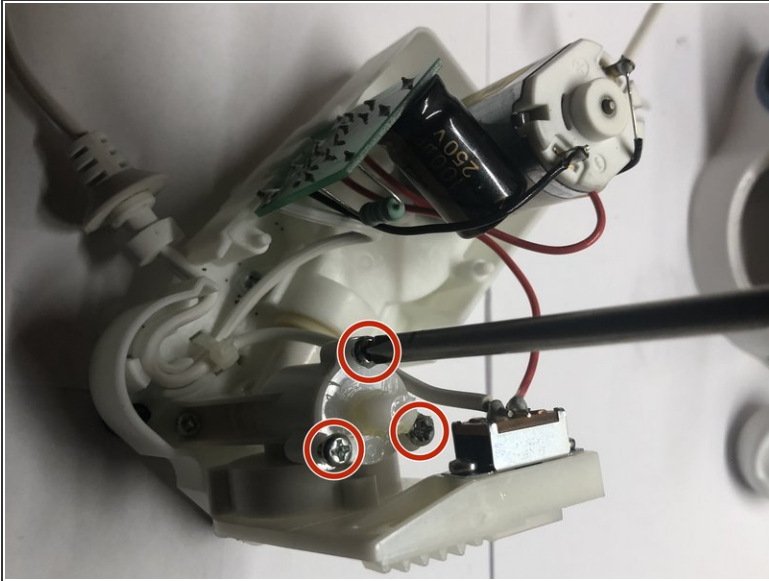
- Insert a small flattip screwdriver into the seam at the base of the unit and gently pry the lower housing from the main body.
- Using a small punch or head of the Phillips screwdriver push through rubber nipple on lower housing.
- ⓘ May require some force to push rubber nipple through.
- Separate lower housing from main body.

Step 5



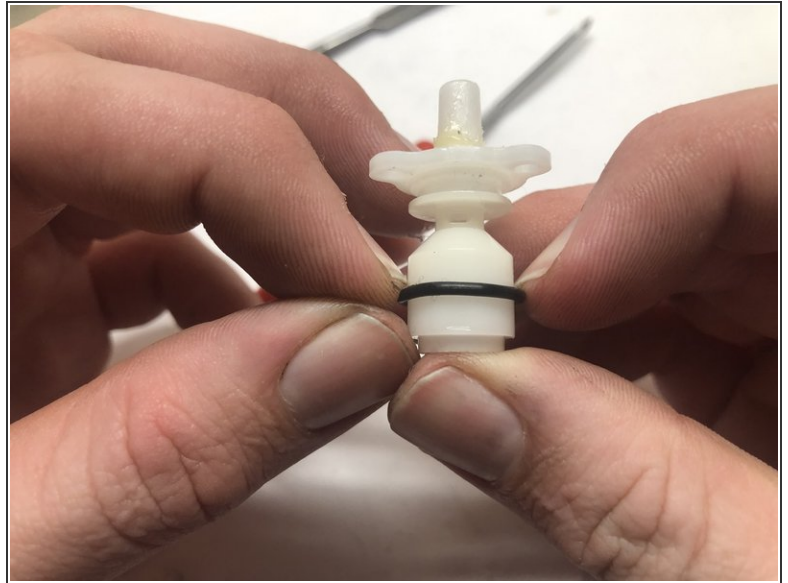
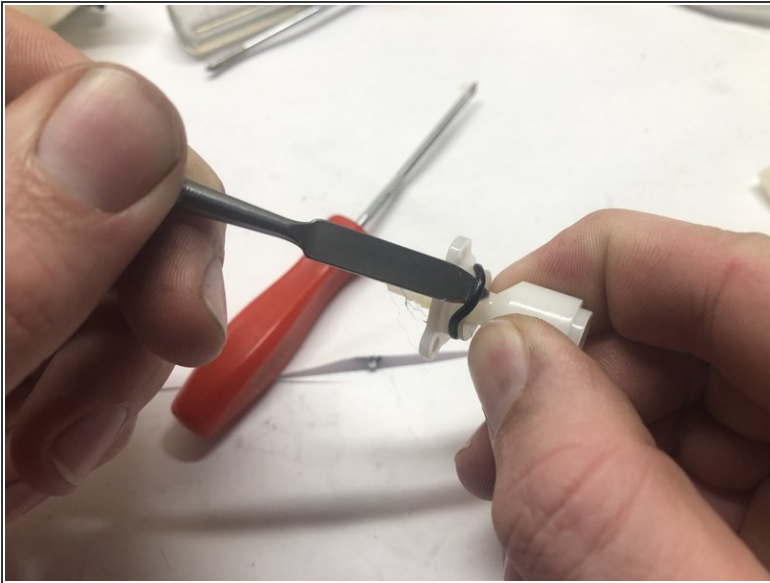
- Using a flattip screwdriver or flat pick inserted between the plastic bezel and pressure knob gently pry the knob from main body.
 - Work in a circular motion around the knob carefully applying pressure until the gauge comes off by hand.
- ⚠ Excessive force can result in damage to the knob or the main body.
- ⓘ The on/off rocker switch does not need to be removed as it does not interfere with the removal of the internal unit.
- Place unit upright and remove main body from internal unit.

Step 6



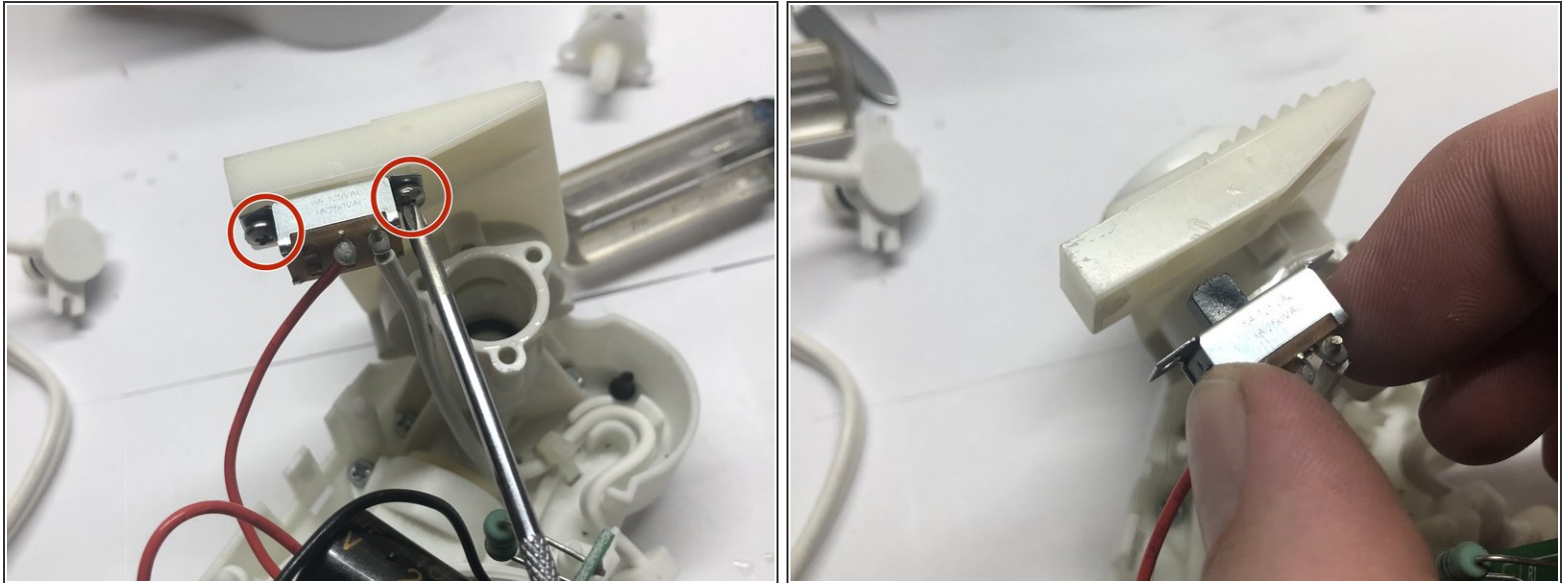
- Remove the three #1 Phillips 4mm screws from the Pump inlet housing.
- Remove the pump inlet housing from the inlet tube.

Step 7



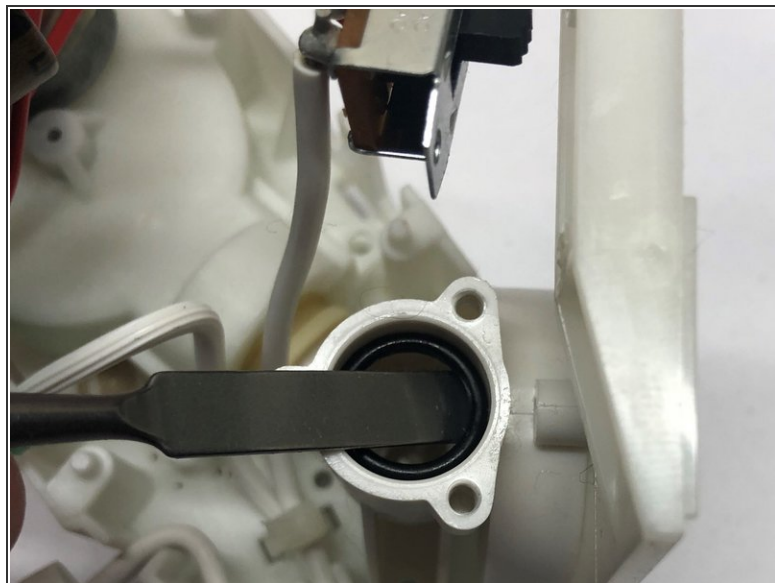
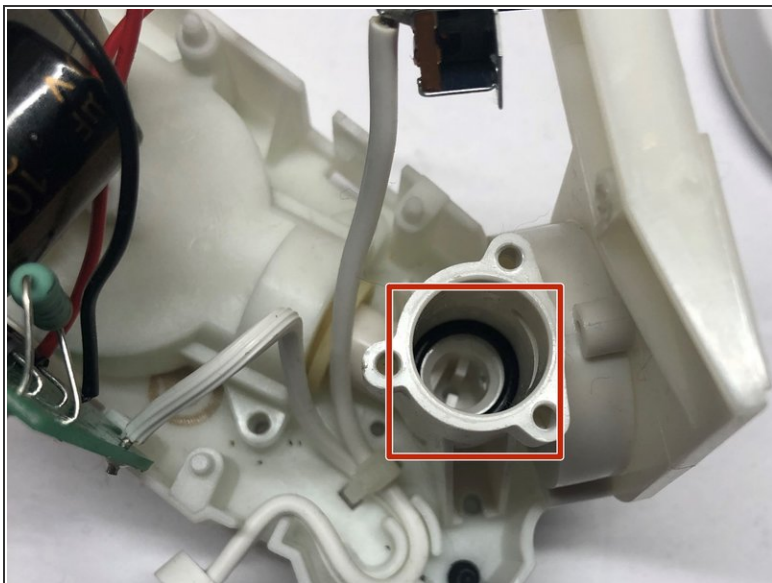
- Using an o-ring removal tool or small flattip screwdriver, gently pry the o-ring from the pump inlet housing.
- ⓘ Once you get the tool under the o-ring use a circular motion as you pry and the o-ring will slide off easily.
- Using your hands roll the o-ring down the body of the inlet housing and remove.

Step 8



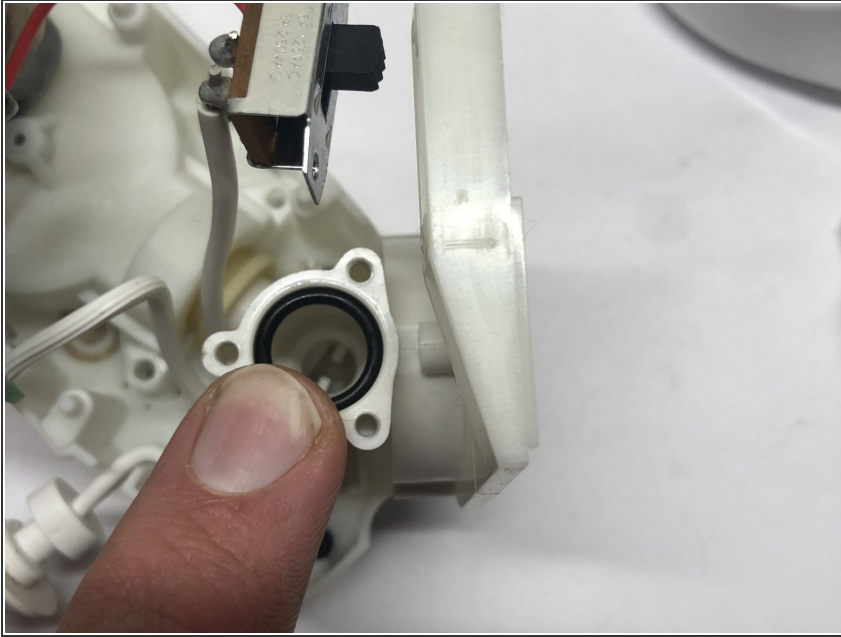
- Remove the two #1 Phillips 3mm screws from the on/off switch.
- Remove the switch from its housing.

Step 9



- Locate the o-ring at the base on the inlet tube.
- Using an o-ring removal tool or a small flattip screwdriver gently remove the o-ring from the pump inlet housing.
- ⓘ Placing the removal tool under the o-ring and against the inlet tube wall you can pull the o-ring out easily.

Step 10



- Using your fingers set the new O-ring over the pump inlet housing.
- Use the removal tool to set the new o-ring at the base of the inlet tube.
- ★ It is not critical that the new o-ring is placed exactly at the base of the inlet tube. As long as the o-ring is flat when the inlet housing is reinstalled it will index the lower o-ring to its proper location.

To reassemble your device, follow these instructions in reverse order.