



Waves Kitchen Line ST-102974.1 Disassembly

Full disassembly of the Waves Kitchen Line sandwich toaster. Showing all steps on how to disassemble the toaster.

Written By: Nout Van Kuik



INTRODUCTION

Full disassembly of the Waves Kitchen Line sandwich toaster. Showing all steps on how to disassemble the toaster.



TOOLS:

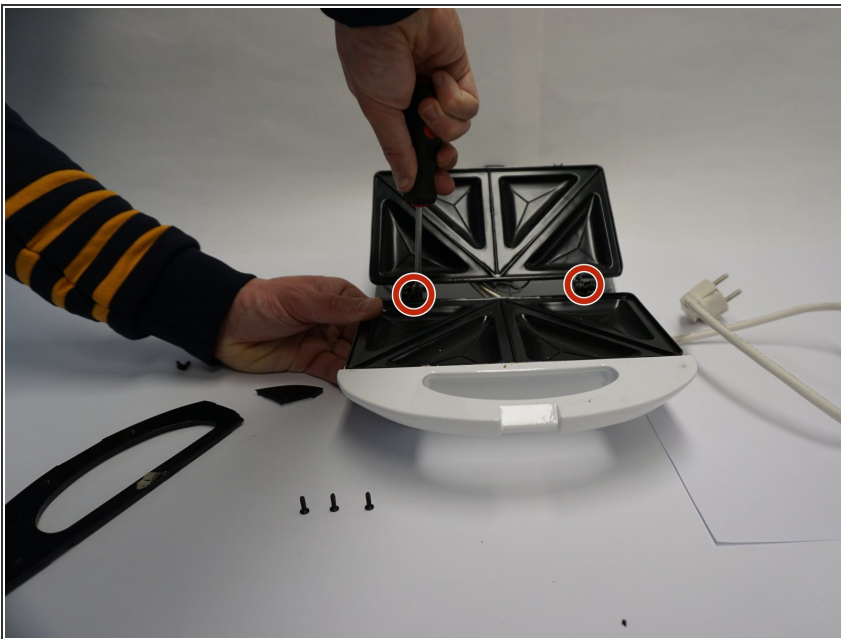
- [Phillips #0 Screwdriver](#) (1)
 - [Tri-point Y0 Screwdriver](#) (1)
-

Step 1 — Waves Kitchen Line ST-102974.1 Disassembly



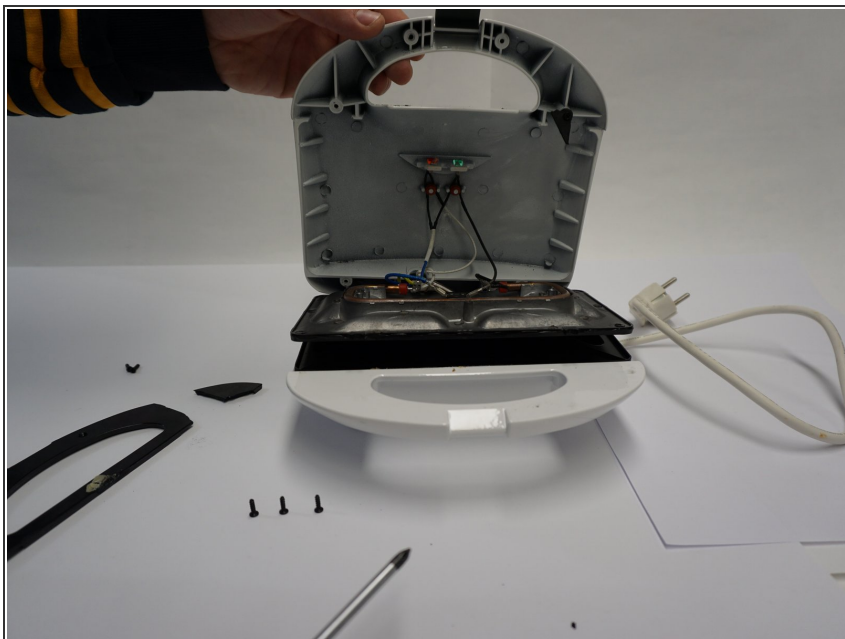
- Unscrew four Phillips #0 screws of the black top plate on the inner side of the sandwich toaster.

Step 2



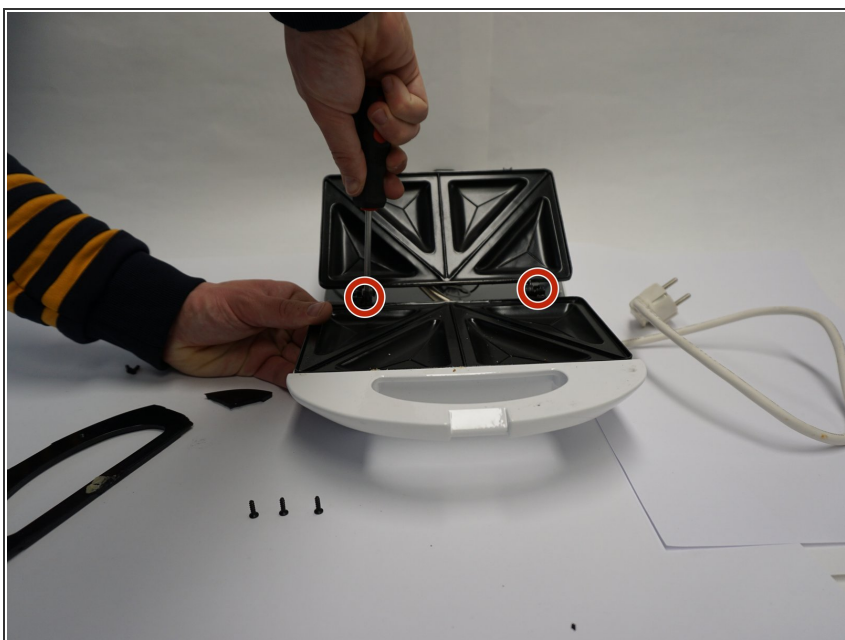
- Unscrew two Phillips #0 screws of the top grill plate.

Step 3



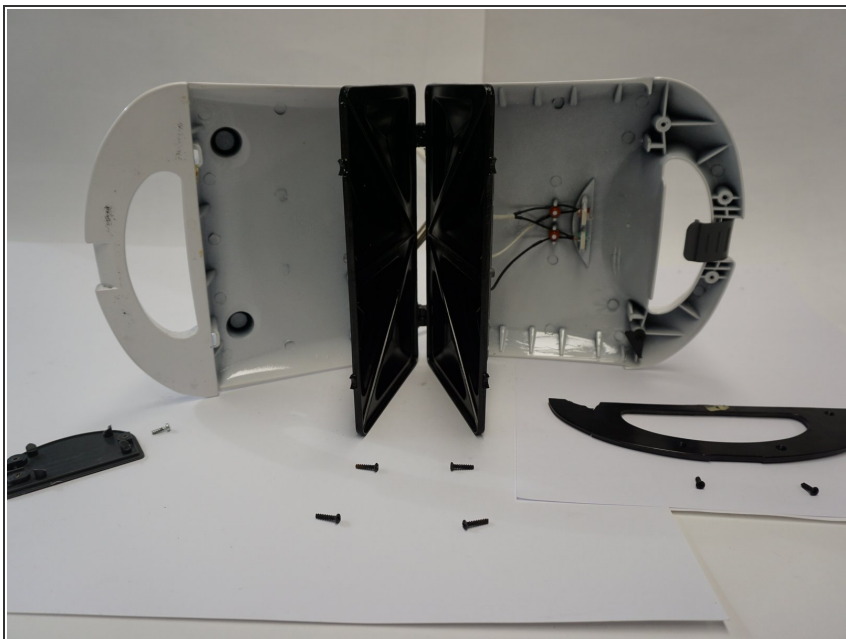
- Remove top grill plate from the base.

Step 4



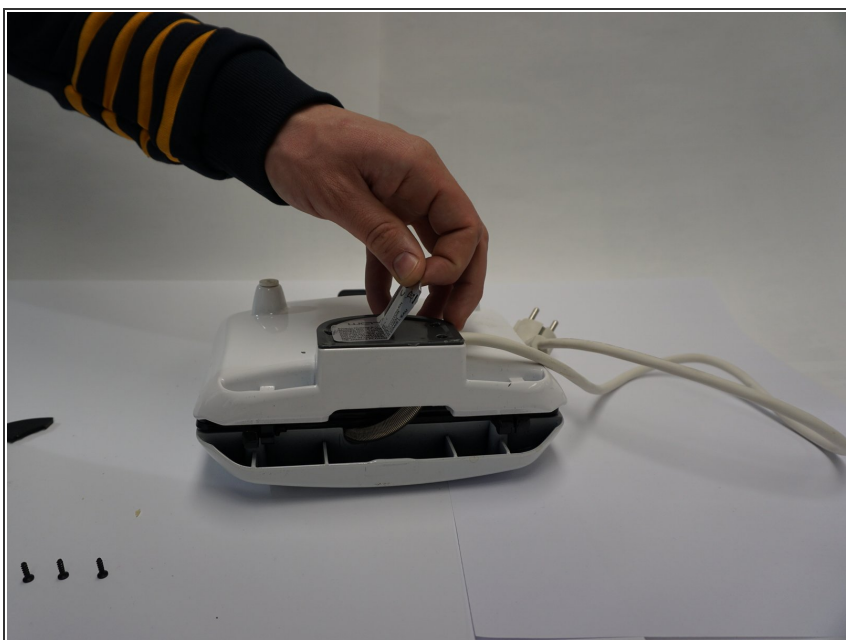
- Unscrew two Phillips #0 screws of the lower grill plate.

Step 5



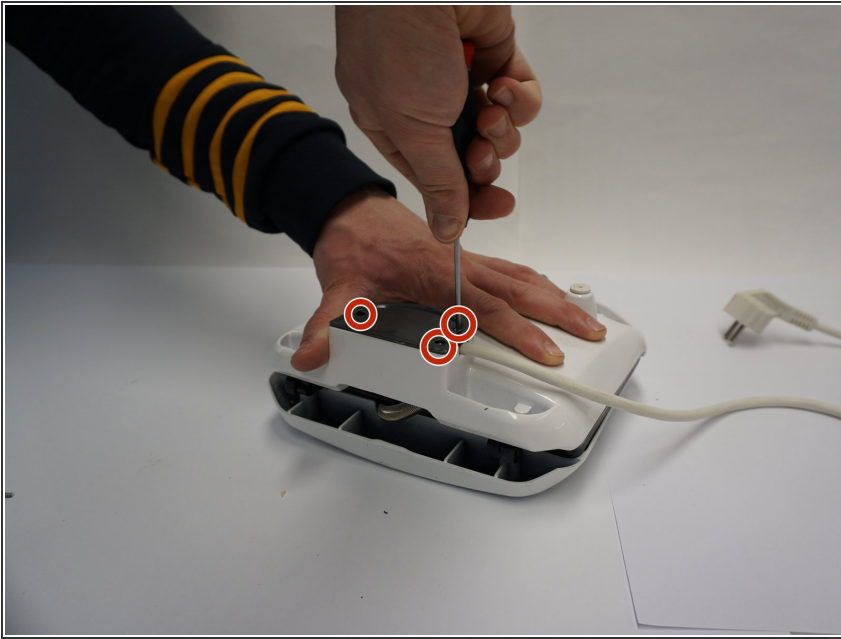
- Remove lower grill plate from the base.

Step 6



- Remove sticker from the bottom of the base.

Step 7



- Unscrew three tri-wing screws of the plate on the bottom.

Step 8



- Remove plate from the bottom of the base.

To reassemble your device, follow these instructions in reverse order.