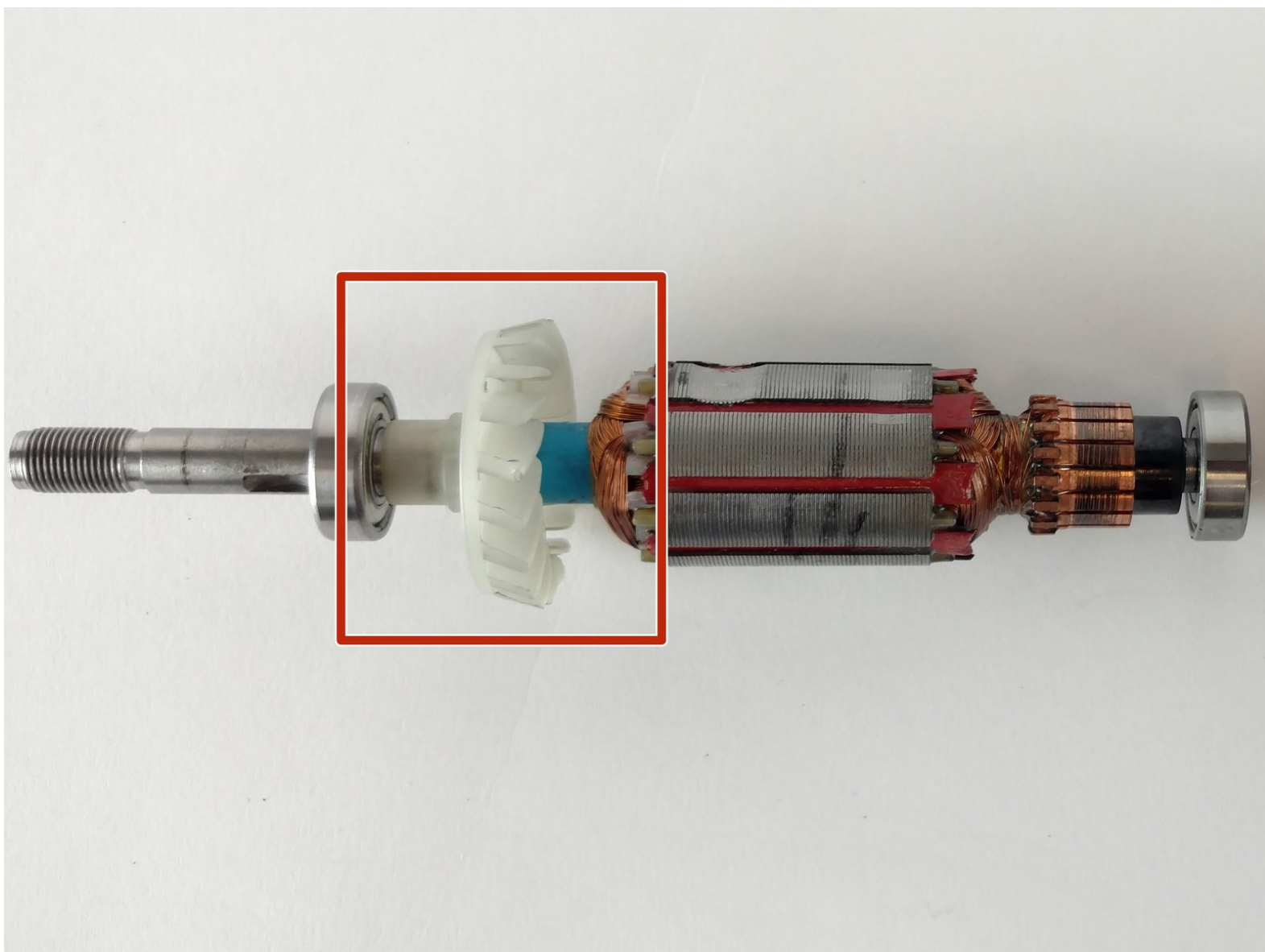




# Wen 2307 Fan Replacement

This guide shows how to replace your Wen 2307 motor fan.

Written By: Joshua Bowery



---

## INTRODUCTION

If your device is over heating you may need to replace your motor fan. This guide will show you how.

---



### TOOLS:

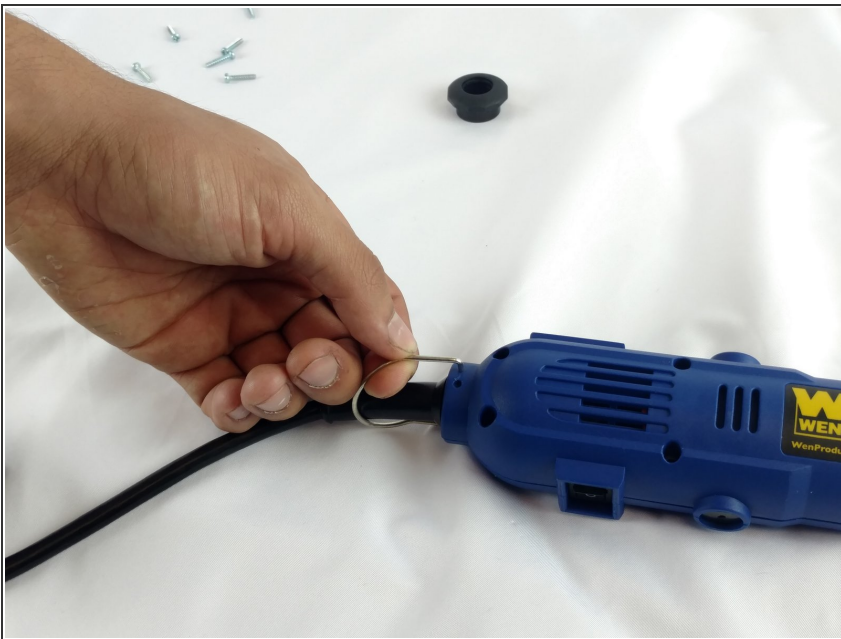
- [Flathead 3/32" or 2.5 mm Screwdriver](#) (1)
  - [Phillips #2 Screwdriver](#) (1)
-

## Step 1 — Front Panel



- Unscrew the locking sleeve.

## Step 2



- Remove the hanging clip.

### Step 3



- Unscrew the six 8mm PH2 screws.

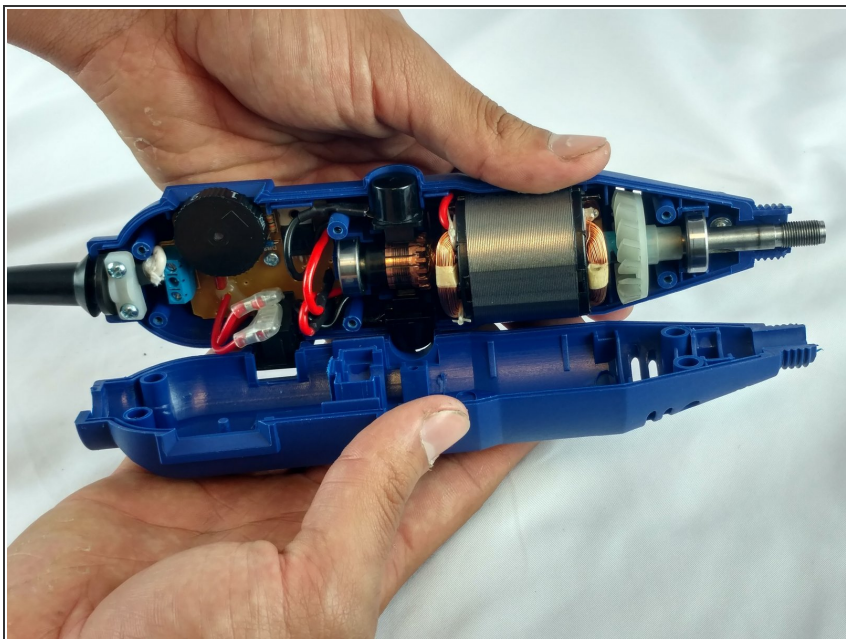
### Step 4



- While pressing the spindle lock button, unscrew the collet nut and remove it along with the brass collet.

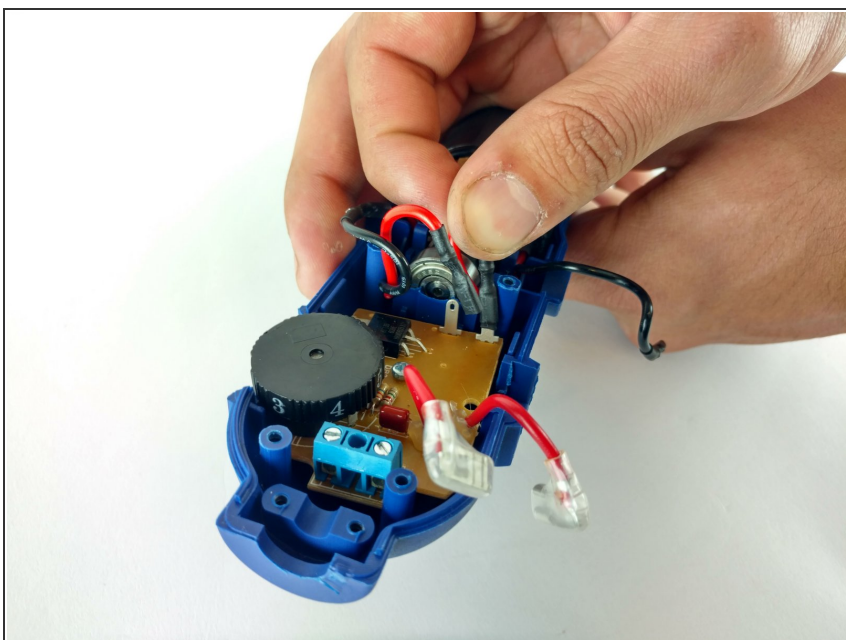


## Step 5



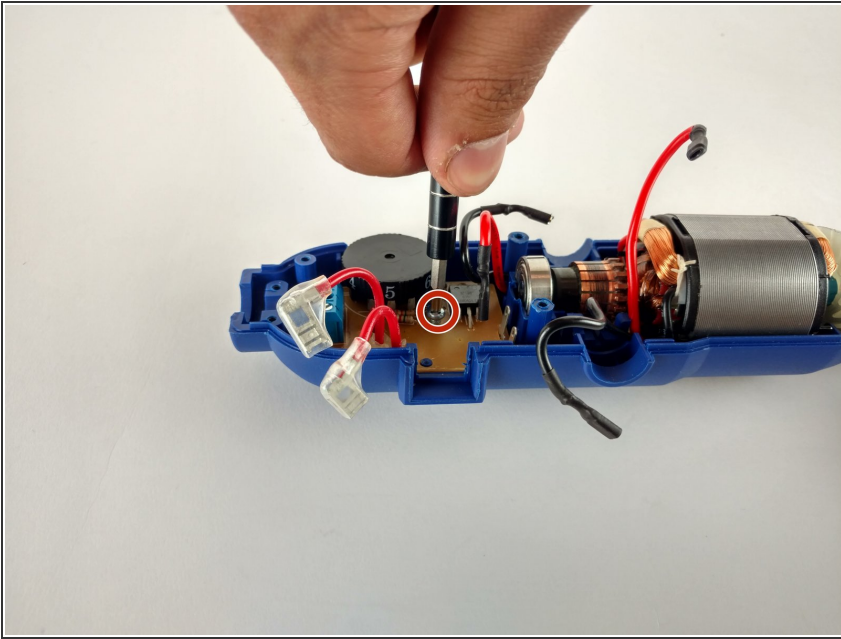
- To remove the front panel, pry the device apart while holding the device with the other hand.
- ⓘ The front panel should come out easily.

## Step 6 — Speed Adjustment Assembly



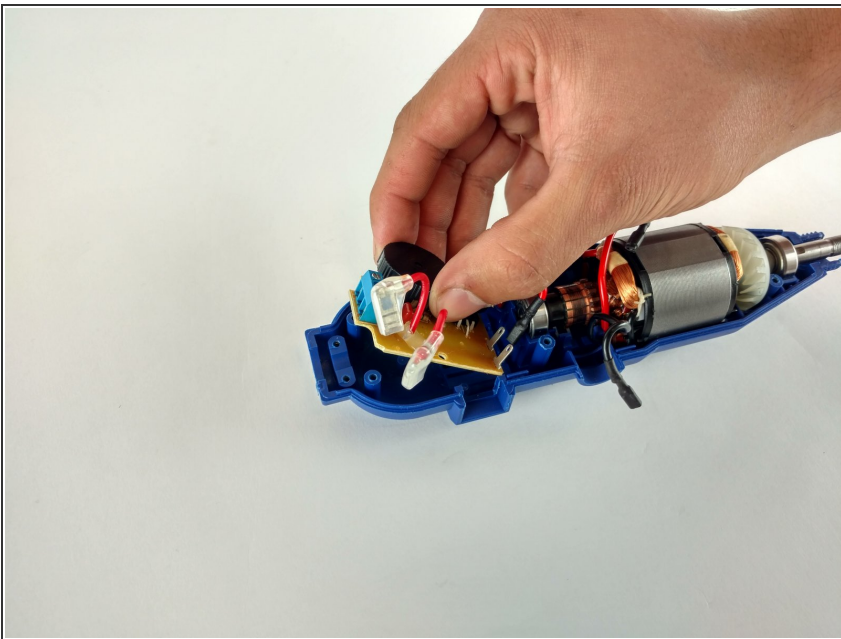
- Remove the connected wiring from the circuit board.

## Step 7



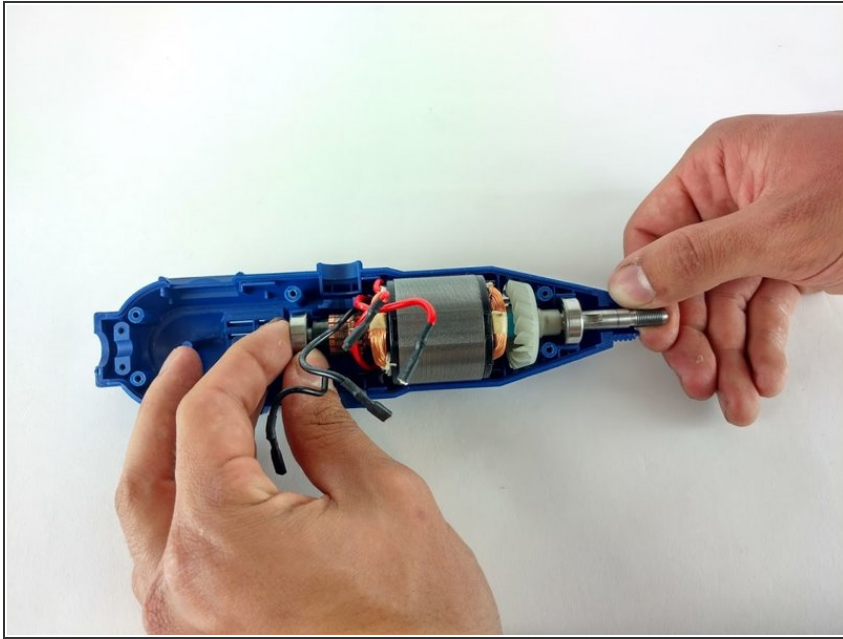
- Remove the single 4mm screw retaining the circuit board.

## Step 8



- Gently pry the circuit board from the back piece.

## Step 9 — Motor



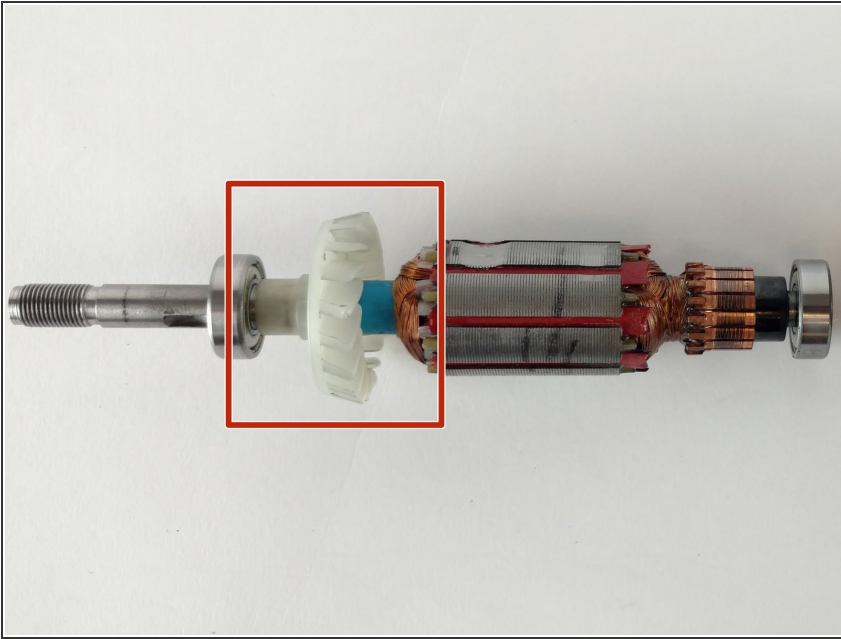
- Gently pull motor assembly out of the panel.

## Step 10



- ❗ Motor separates into two pieces.

## Step 11 — Fan



- The fan assembly is attached to the rotor beam, it can be disassembled to change the fan by simply pulling off the pieces.

To reassemble your device, follow these instructions in reverse order.