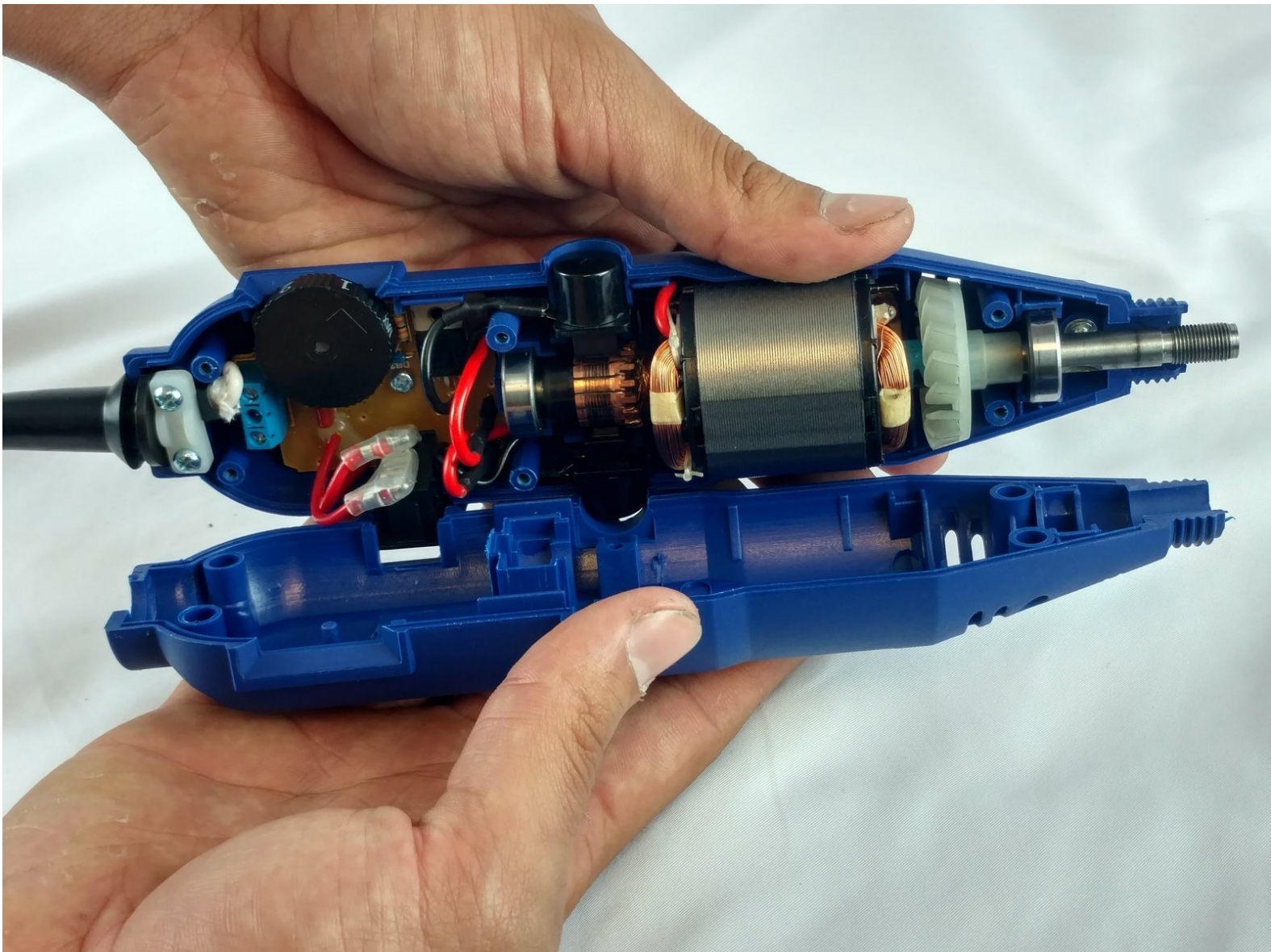




Wen 2307 Front Panel Replacement

Remove the top panel of the Rotary tool in order to access its internal components.

Written By: Sergio Palacio



INTRODUCTION

This guide is mandatory in order to replace other parts of your rotary tool.



TOOLS:

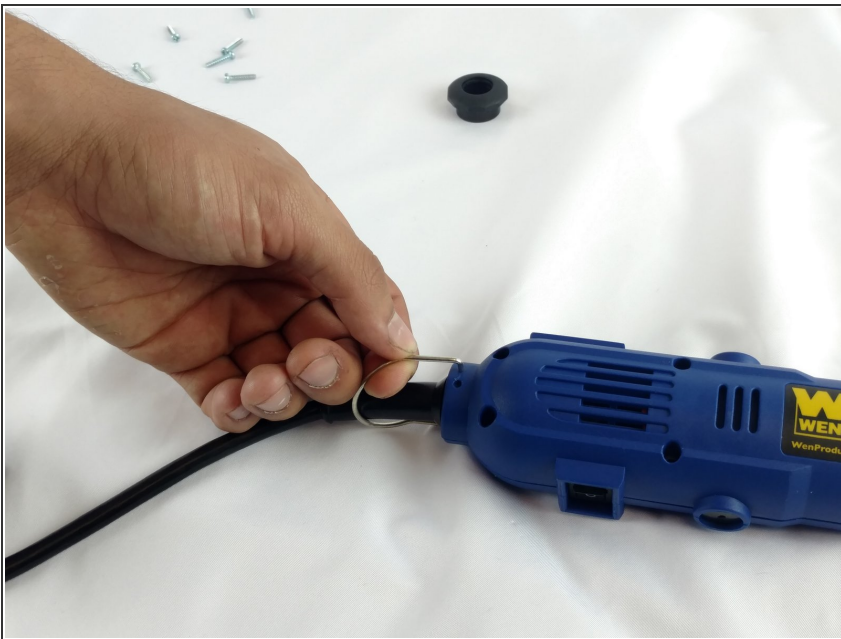
- [Phillips #2 Screwdriver](#) (1)
-

Step 1 — Front Panel



- Unscrew the locking sleeve.

Step 2



- Remove the hanging clip.

Step 3



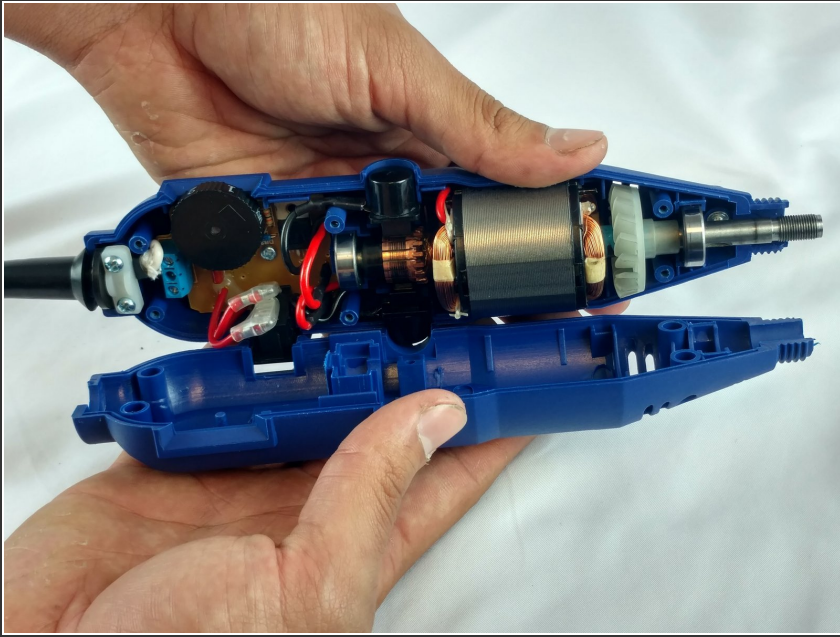
- Unscrew the six 8mm PH2 screws.

Step 4



- While pressing the spindle lock button, unscrew the collet nut and remove it along with the brass collet.

Step 5



- To remove the front panel, pry the device apart while holding the device with the other hand.
- ⓘ The front panel should come out easily.

To reassemble your device, follow these instructions in reverse order.