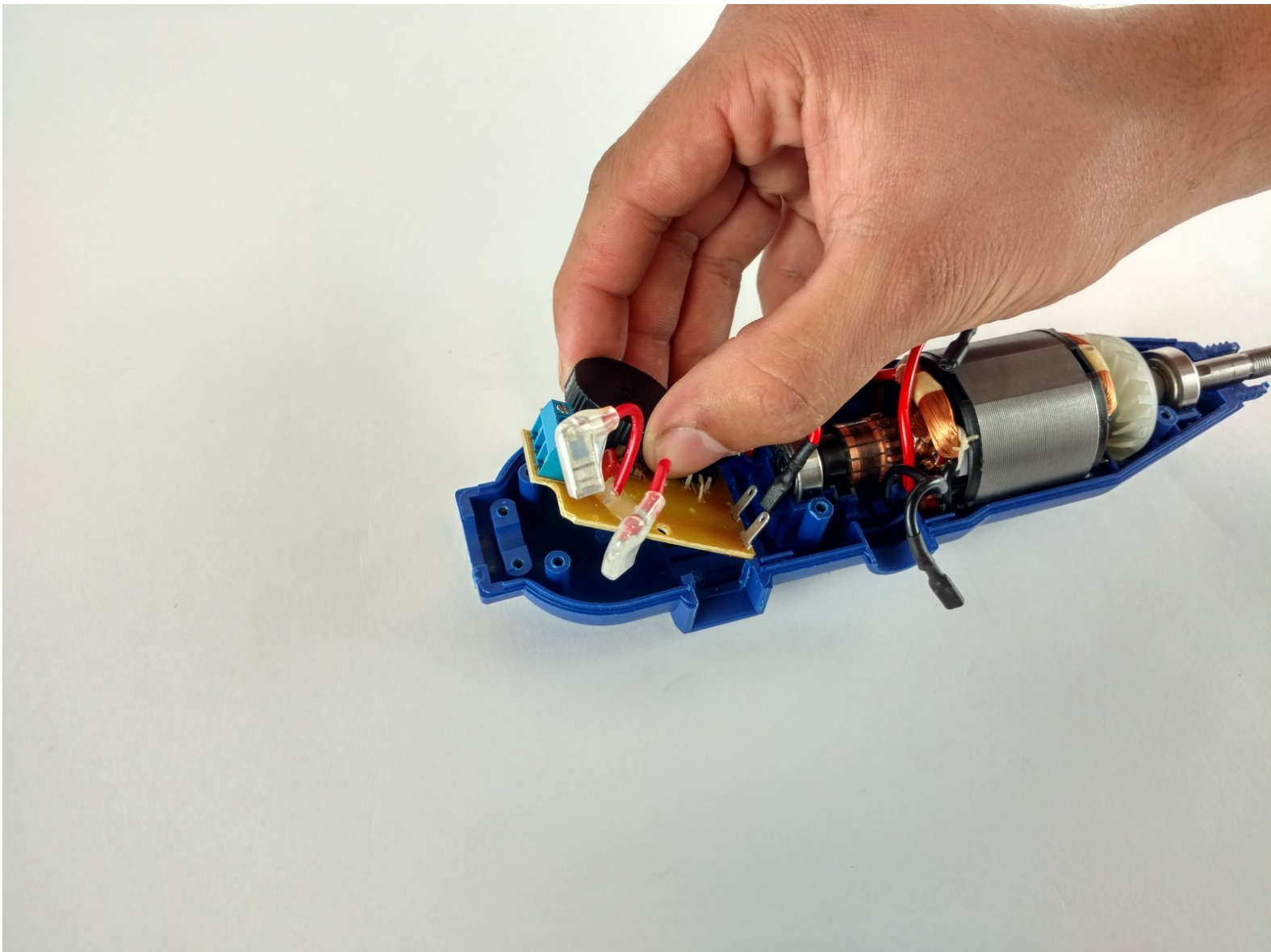




# Wen 2307 Speed Adjustment Assembly Replacement

This guide will demonstrate how to replace the speed adjustment circuit board on the Wen 2307 Rotary Tool.

Written By: Dominick Chavez



---

## INTRODUCTION

If the device is not changing speed it may be because of a broken speed adjuster.



### TOOLS:

- [Flathead 3/32" or 2.5 mm Screwdriver](#) (1)
  - [Phillips #2 Screwdriver](#) (1)
-

## Step 1 — Front Panel



- Unscrew the locking sleeve.

## Step 2



- Remove the hanging clip.

### Step 3



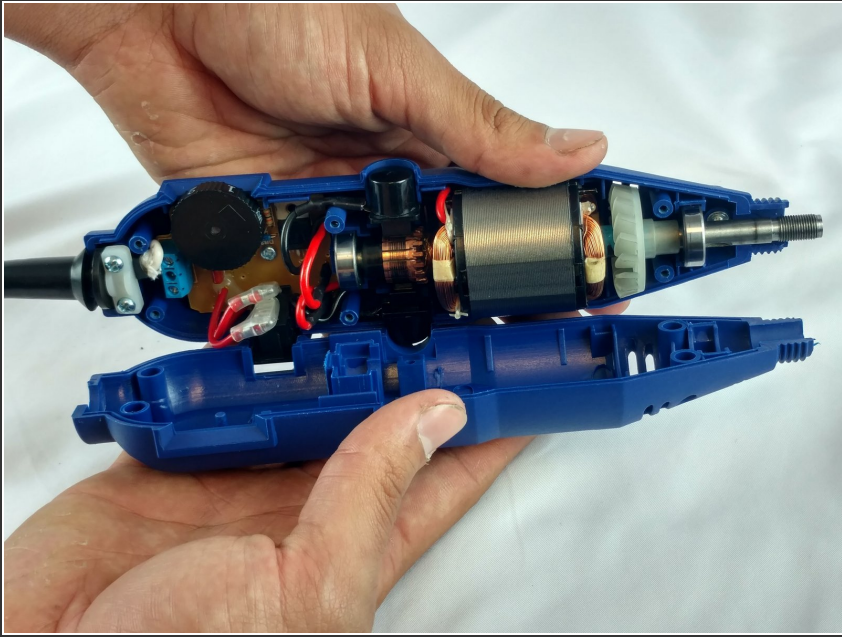
- Unscrew the six 8mm PH2 screws.

### Step 4



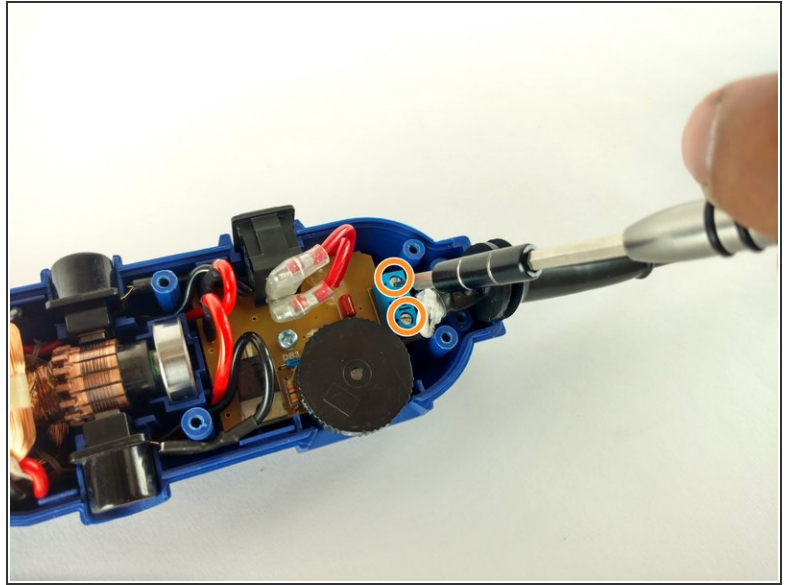
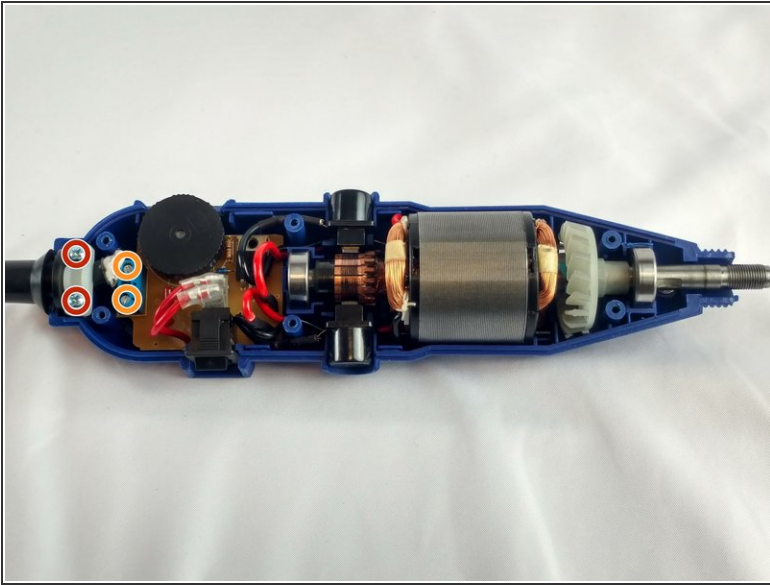
- While pressing the spindle lock button, unscrew the collet nut and remove it along with the brass collet.

## Step 5



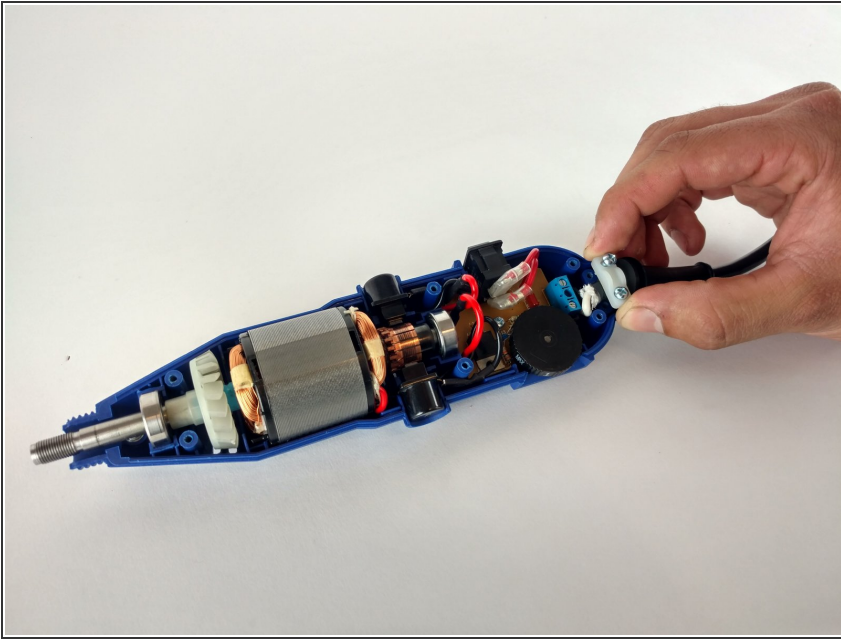
- To remove the front panel, pry the device apart while holding the device with the other hand.
- ⓘ The front panel should come out easily.

## Step 6 — Power Cable



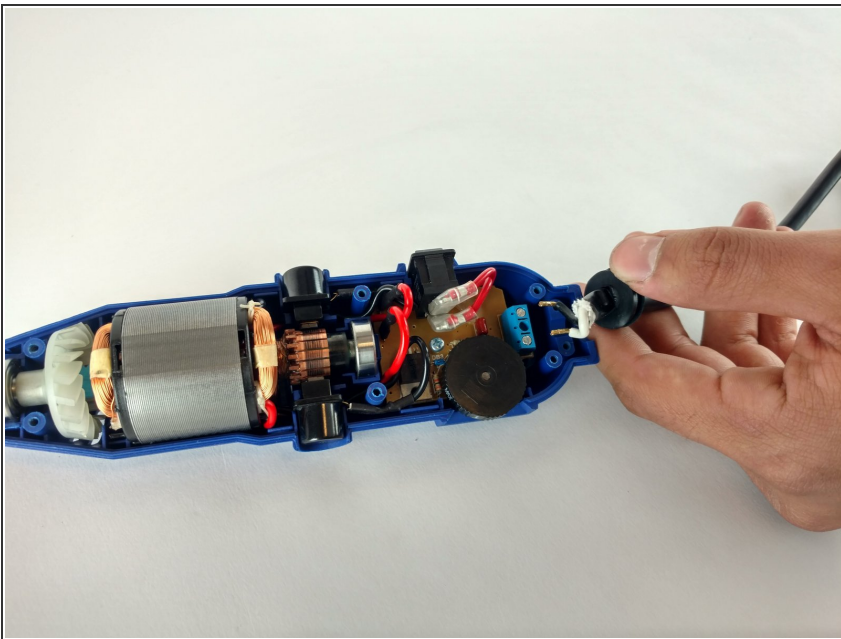
- Identify the screws.
  - Unscrew the two 3mm phillips PH2.
  - ⓘ Don't forget to put them appart from the ones unscrewed before.
  - ⓘ Don't forget to put them appart from the ones unscrewed before.
  - Phillips PH2
  - Flathead 2.5mm

## Step 7



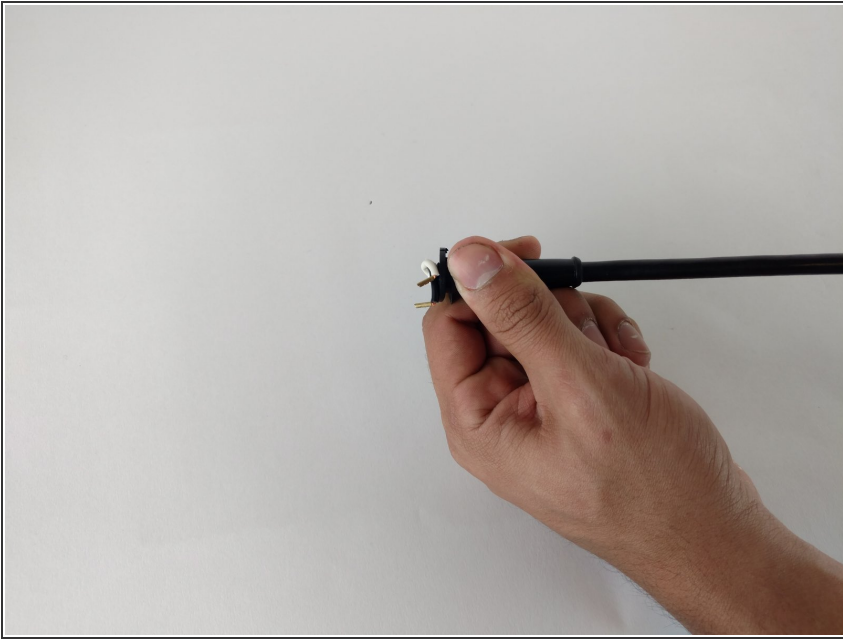
- Remove the place boar carefully.

## Step 8



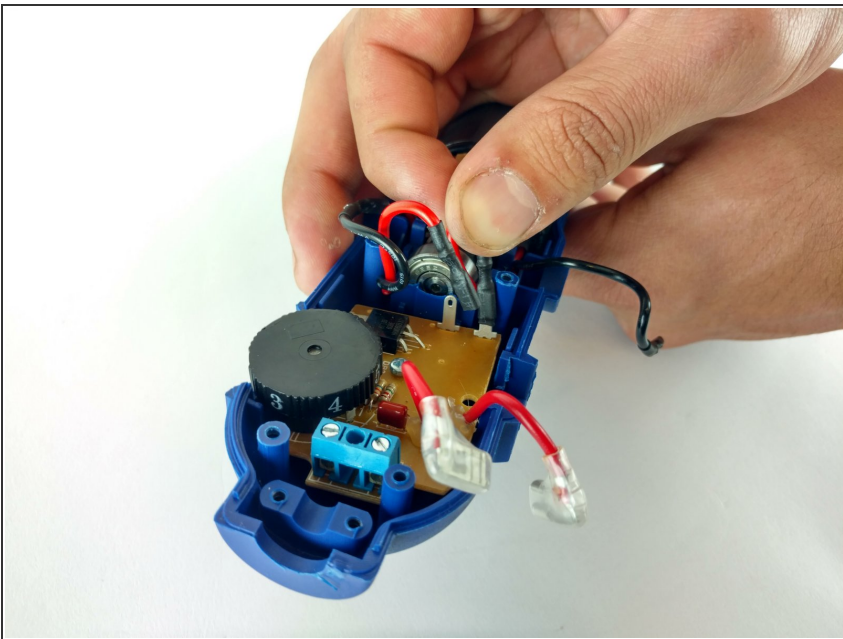
- Pull out the power cable connectors.

## Step 9



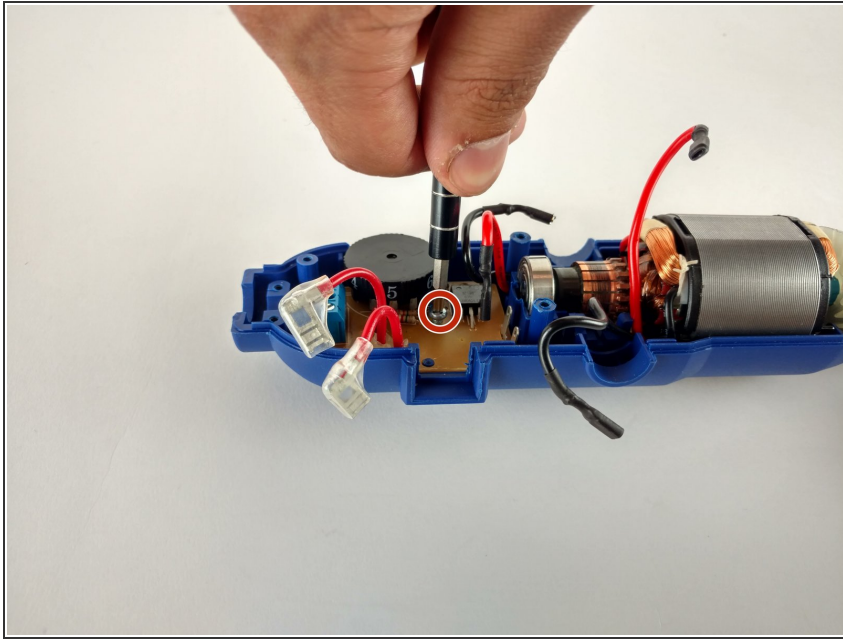
- Pull out the cord sleeve for the new cable replacement.

## Step 10 — Speed Adjustment Assembly



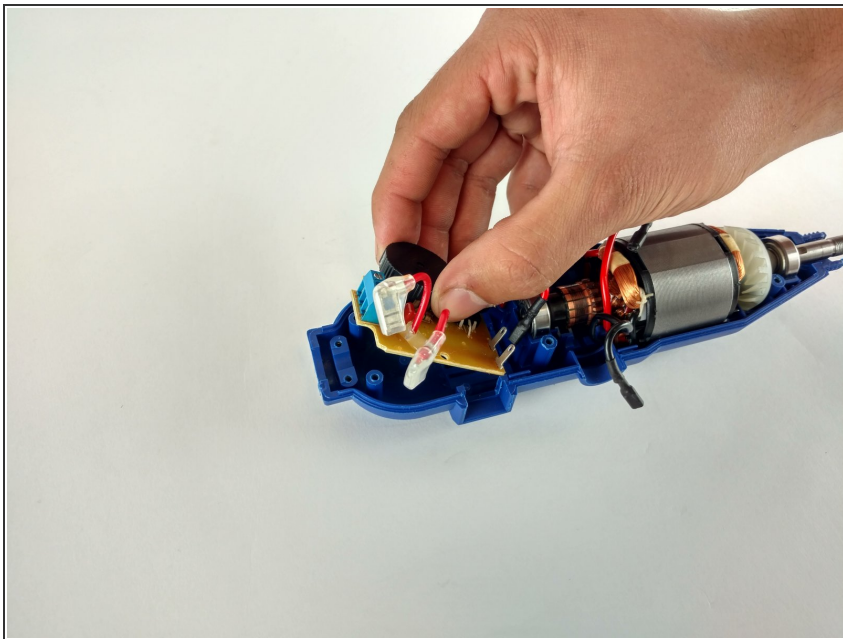
- Remove the connected wiring from the circuit board.

## Step 11



- Remove the single 4mm screw retaining the circuit board.

## Step 12



- Gently pry the circuit board from the back piece.

To reassemble your device, follow these instructions in reverse order.