



Western Digital Sentinel DX4000 Internal DDR3 Ram Replacement

In this guide we will open the unit and replace the single stick of RAM with a 4GB module.

Written By: Levi Giesbrecht



INTRODUCTION

This replacement/teardown only uses 2 types of Phillips screws, and a #1 phillips screwdriver is all you need. Remeber to remove any hard drives before to make handling the unit safer and easier.



TOOLS:

- [Phillips #1 Screwdriver](#) (1)



PARTS:

- [DDR3 1333 SO-DIMM RAM](#) (1)

Step 1 — Remove the Cover pt.1



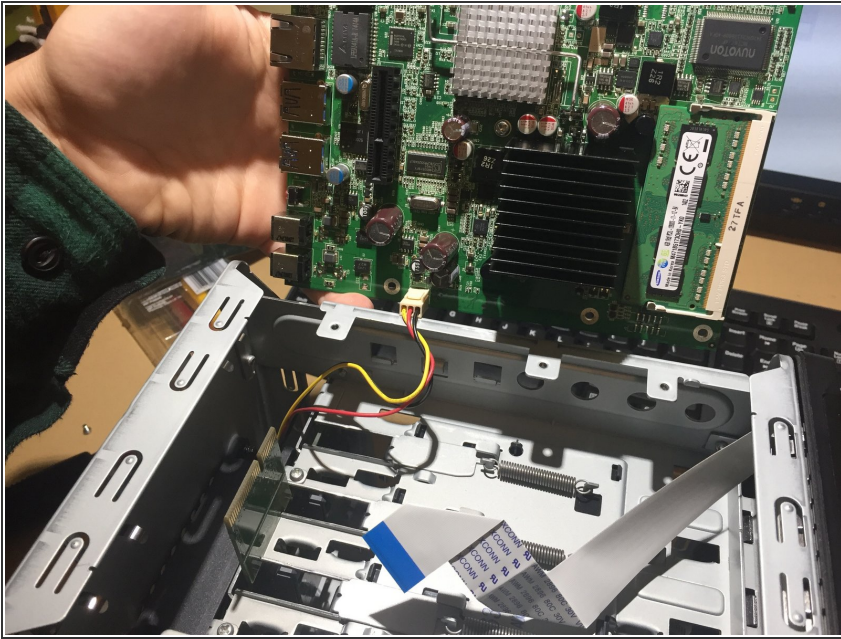
- We will start with removing the 5 black phillips screws holding the sheet metal frame.
- Make sure you set these 5 screws aside; they're bigger than the rest.

Step 2 — Remove the Cover pt.2



- The sheet metal slides towards the rear of the machine about 1-2cm, then lifts directly up.
- Once the metal is off, we can also get a look at the SATA backplane for connecting the 4 HDDs.

Step 3 — Remove the Mainboard pt.1



- Remove the 6 Phillips screws holding the PCB in place.
- Carefully flip up the brown ribbon cable connector. *These connectors are very fragile.*
- The board will be slightly wedged between 2 bumps in the frame. Don't apply too much force to the front end, because of some connectors on the underside of the board.

Step 4 — Removing the Mainboard pt.2



- Before you have begun to lift the board, make sure the ribbon cable is fully removed. It is also attached using an adhesive pad.
- Lift the board directly up; there is a PCIe slot connecting the drive daughterboard and the mainboard.
- Carefully flip the board over the right edge of the case to get access to the fan connector.

Step 5 — Replace the RAM



- We can now put the chassis aside and turn our attention to the board.
- Unfortunately the Intel Atom D525 only supports up to 4gb of ram over the 2 already installed.
- Like usual SO-DIMM slots, pull back the 2 arms on the RAM slot to remove tension on the RAM. From here, replace the RAM like any other replacement.

To reassemble your device, follow these instructions in reverse order. Remember to take extra caution to line up the PCIe slot and connector on the mainboard and daughterboard. Also remember to keep the ribbon cable in a place where it won't get trapped beneath the mainboard and you have to get it out.