



Wexford CT-166TF Plastic Casing Replacement

A quick and easy guide to replacing the outer plastic covers.

Written By: Cameron Mattson



INTRODUCTION

This guide will show you how to remove the plastic casing so that it can be replaced.



TOOLS:

- [Spudger](#) (1)
 - [Phillips #1 Screwdriver](#) (1)
 - [Phillips #2 Screwdriver](#) (1)
-

Step 1 — Settings Knob



- Locate the knob at the top of the fan.

Step 2



- Remove the knob by gripping it and pulling straight up. Use a spudger if it is difficult to grip.
- ★ When reassembling, be sure to align the bottom of the new knob and the turning mechanism in the fan before pushing down.

Step 3 — Plastic Casing



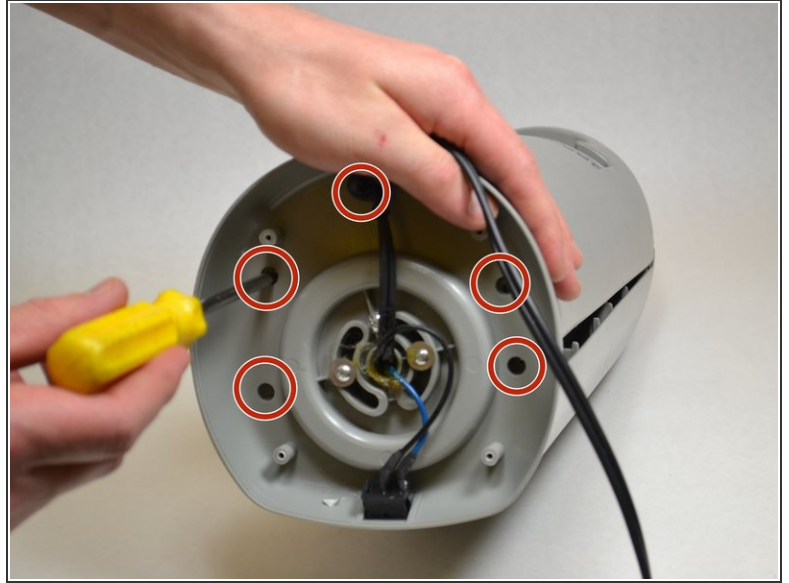
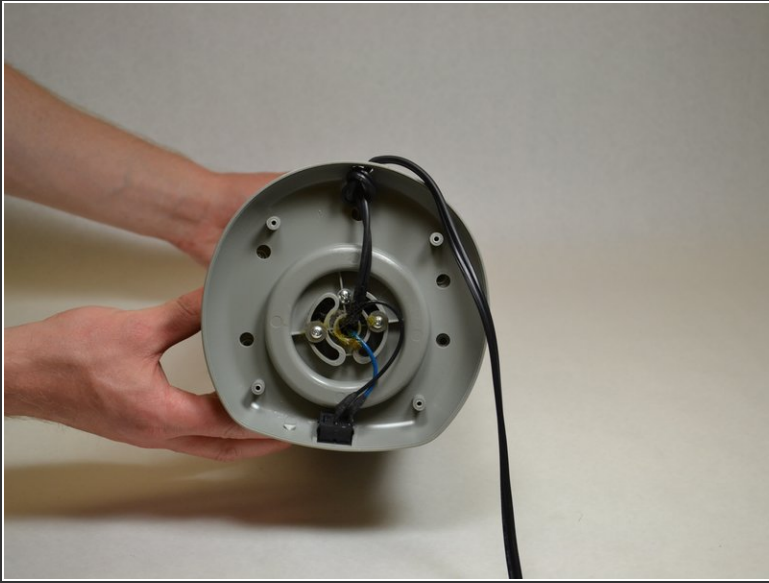
- Using the plastic opening tool, turn the device over and remove the black plastic covers over the four screw holes.

Step 4



- Remove the four screws underneath the plastic covers.

Step 5



- Remove 5 smaller screws visible through small holes between the base and the casing.

Step 6



- Remove four screws on the back, two near the top and two near the bottom.

Step 7



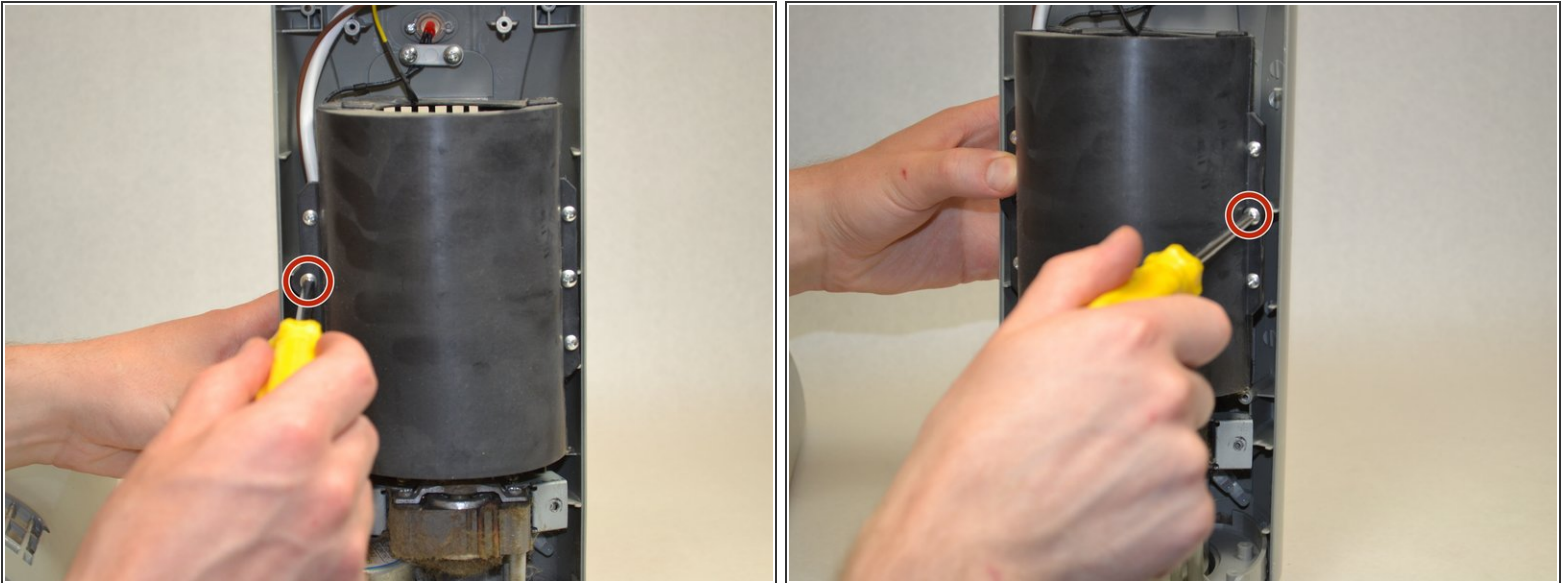
- Pull off the back casing.

Step 8



- Remove the 2 screws that attach the front part of the casing to the motor.

Step 9



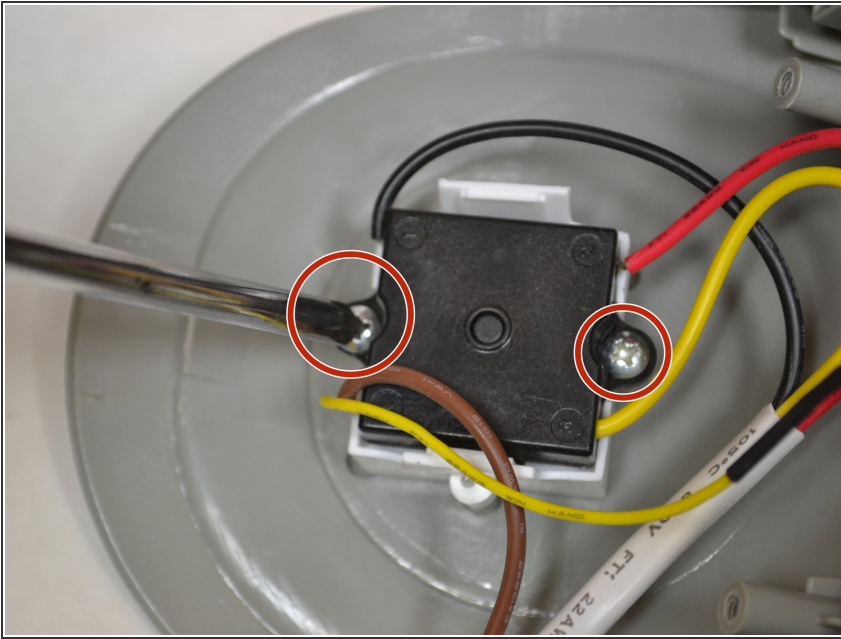
- Remove the two middle screws attaching the black plastic cover to the front .

Step 10



- Remove the two screws attached to the white bar near the red light on the top of the front casing.

Step 11



- Remove the two screws keeping the button attached to the top of the casing.

To reassemble your device, follow these instructions in reverse order.