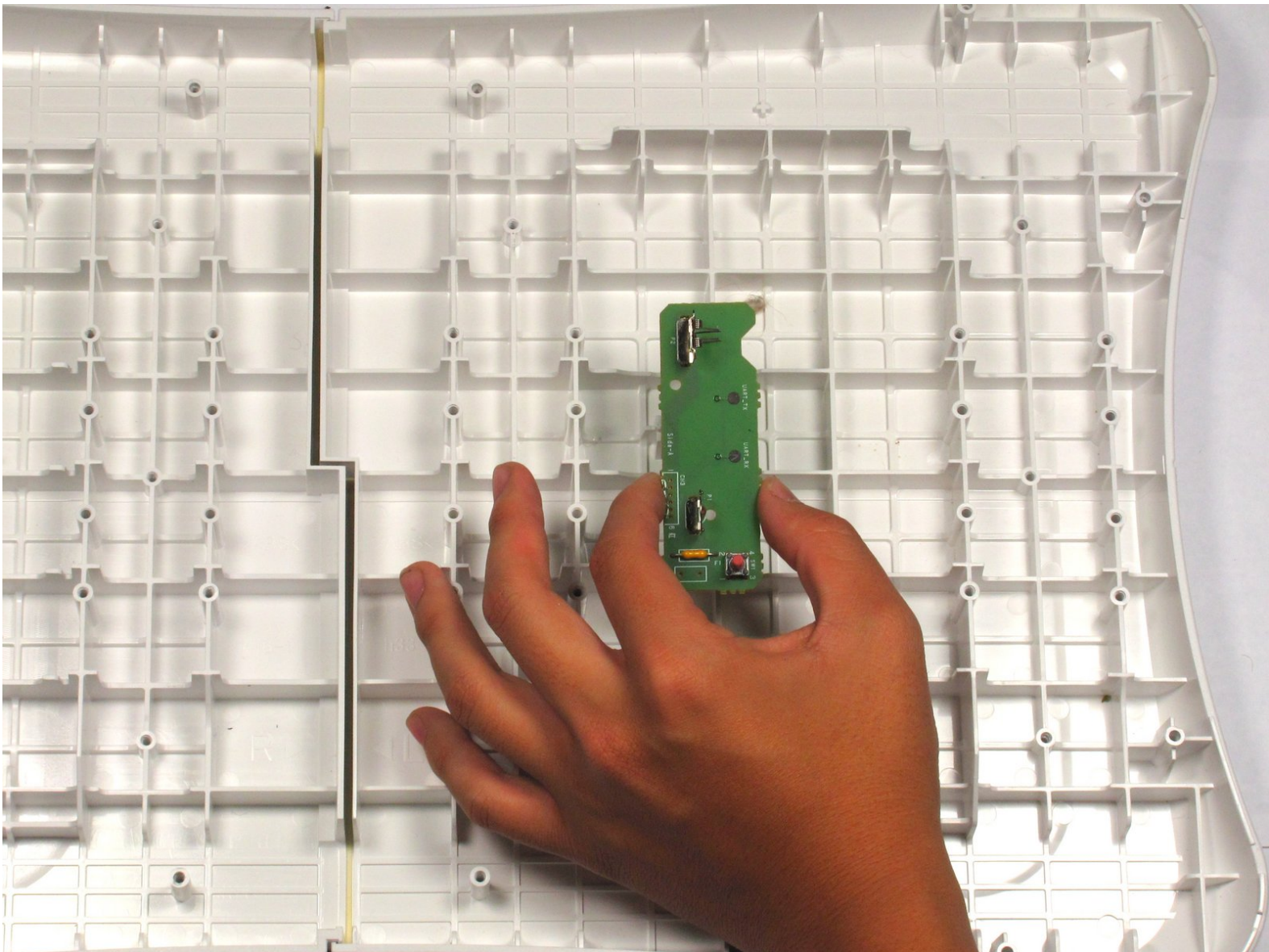




Wii Balance Board Frame Replacement

Use this guide to replace the Power Supply.

Written By: Cory Olson



INTRODUCTION

This guide will demonstrate how to replace the Power Supply inside the Wii Balance Board.



TOOLS:

- [Phillips #1 Screwdriver](#) (1)



PARTS:

- [A new Wii Balance Board Power Supply](#) (1)

Step 1 — Unscrewing the Foot Cover



- Flip device upside-down so the plastic white board is facing the ground.
- Locate the four feet in the corners of the Balance Board.
- Unscrew the three 12.7 mm Phillips screws from each foot cover.

Step 2 — Removing the Foot Cover



- Remove the gray plastic ring from the actual foot by lifting it up.

Step 3 — Removing the Foot



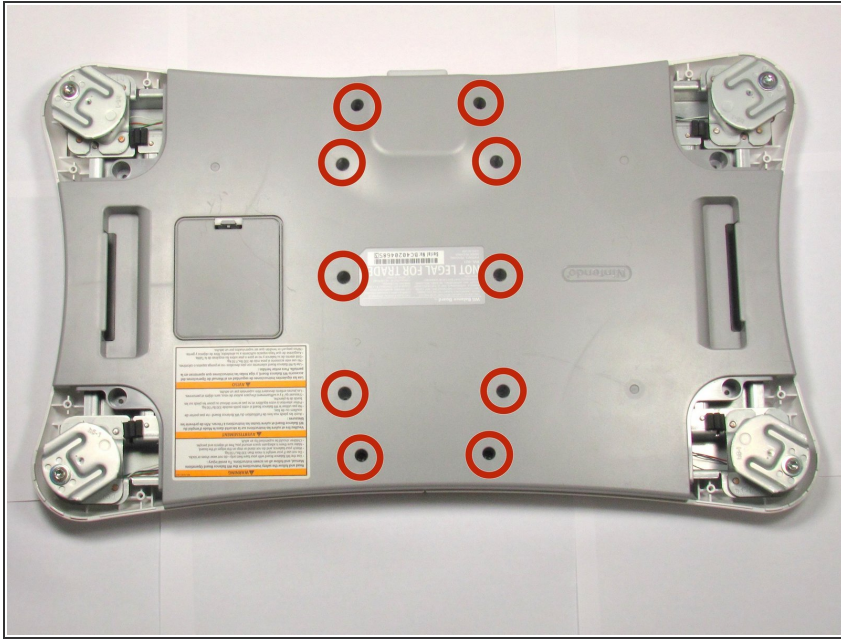
- Separate the loose foot from the device by lifting it up.

Step 4 — Removing the Additional Feet



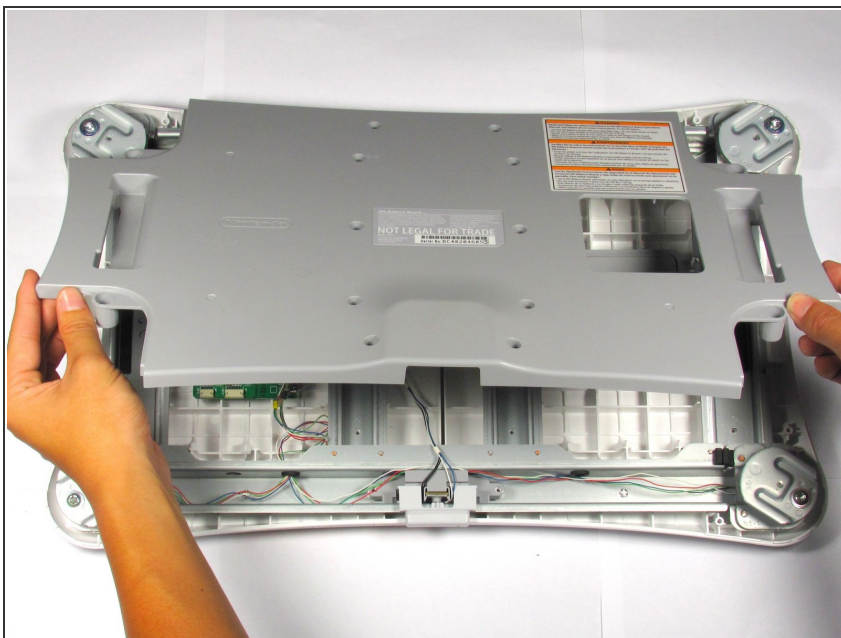
- Repeat steps two and three on the remaining four feet.

Step 5 — Unscrewing the Back Cover



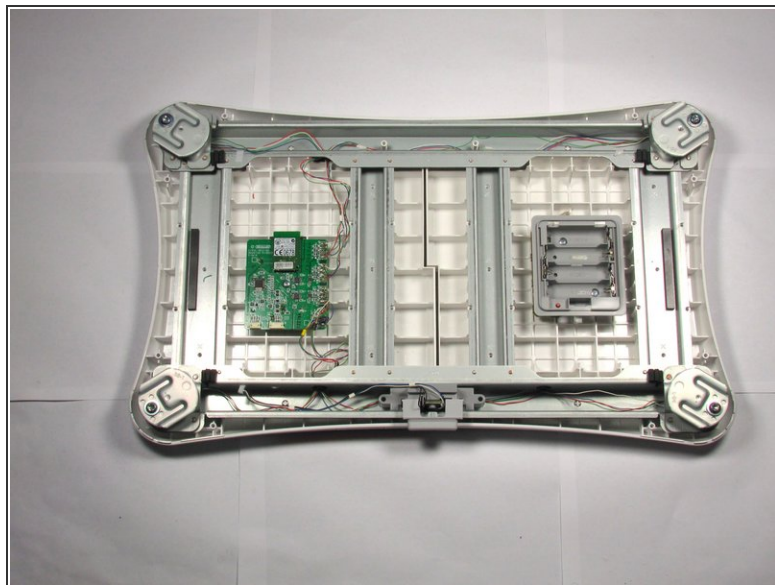
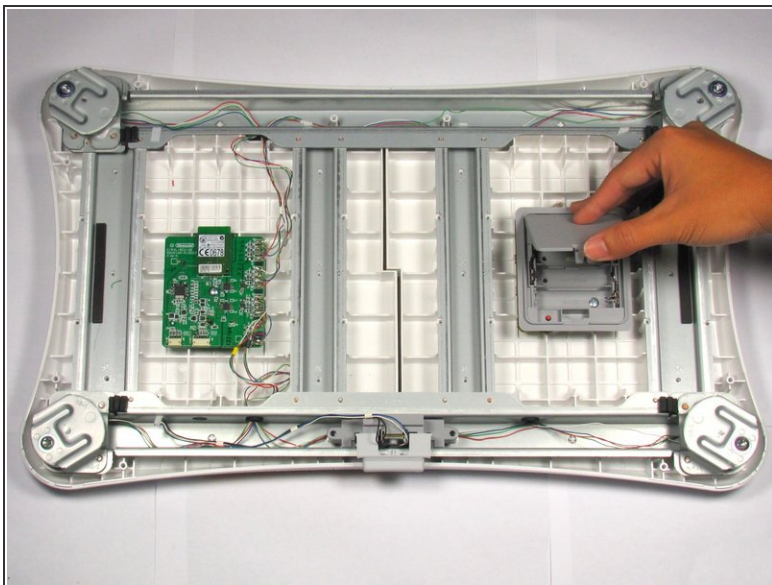
- Unscrew the ten 12.7 mm Phillips #1 screws.

Step 6 — Removing the Back Cover



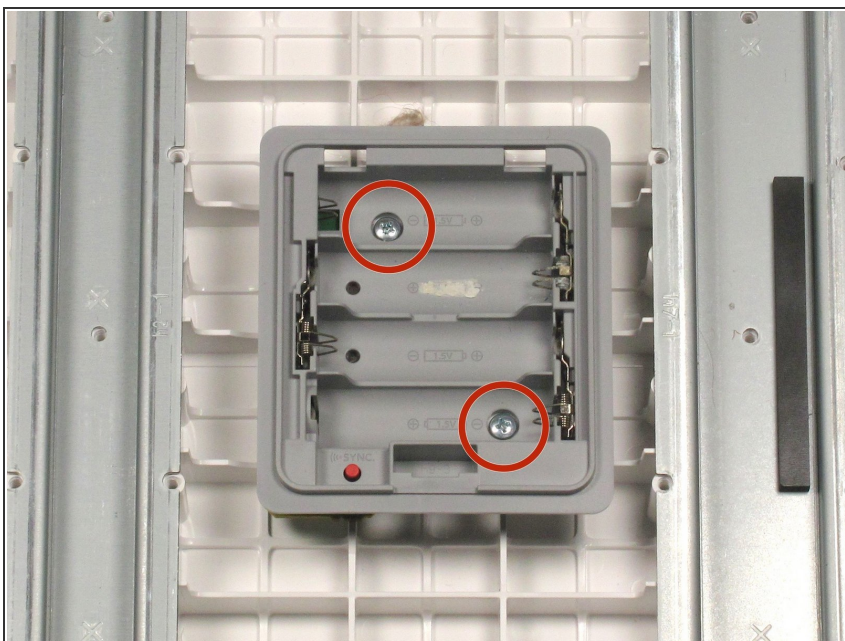
- Lift off the gray back cover.

Step 7 — Battery Compartment



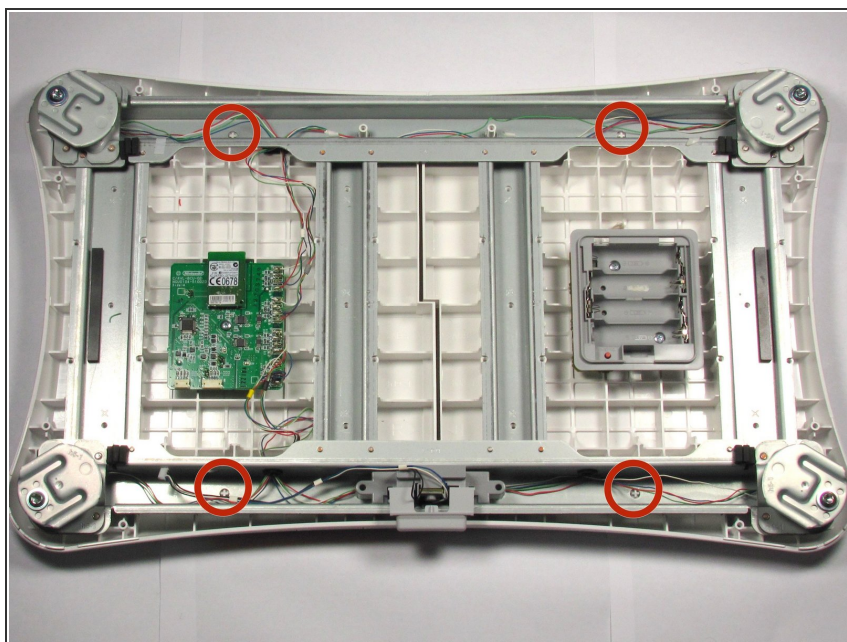
- Locate the gray battery compartment.
- Push the tab on the bottom and lift up completely to remove the cover to the batteries.

Step 8 — Removing the Battery Case



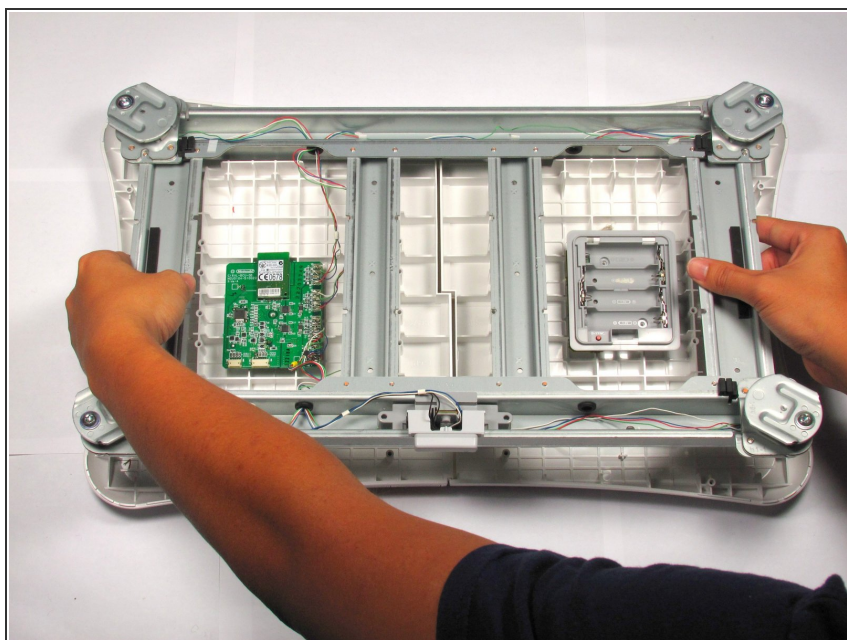
- Unscrew the two 6.35 mm Phillips #1 screws.
- Slide the battery case out.

Step 9 — Unscrewing the Frame



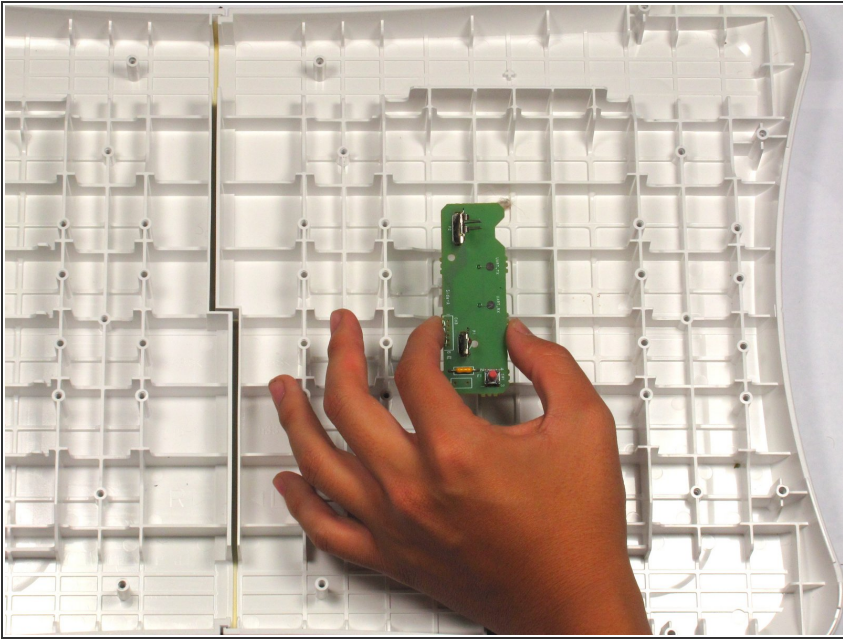
- Unscrew the four 12.7 mm #1 screws.

Step 10 — Removing the Frame



- Lift the frame, circuit board, and power supply out of the front case. These components are all connected.

Step 11 — Removing the Power Supply



- Lift out the power supply. It is not screwed in.

To reassemble your device, follow these instructions in reverse order.