



Wii Balance Board Teardown

Written By: efrain

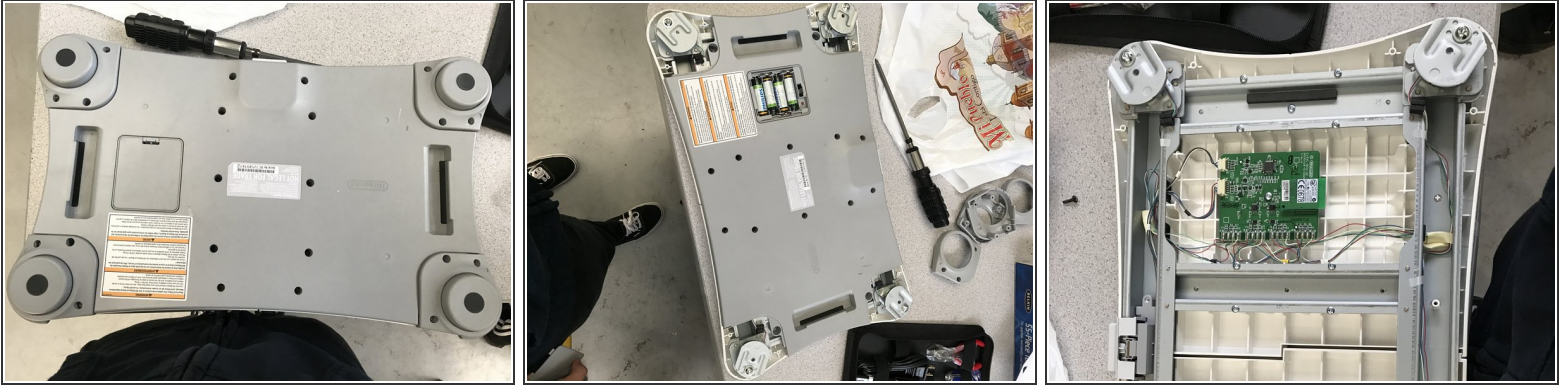




TOOLS:

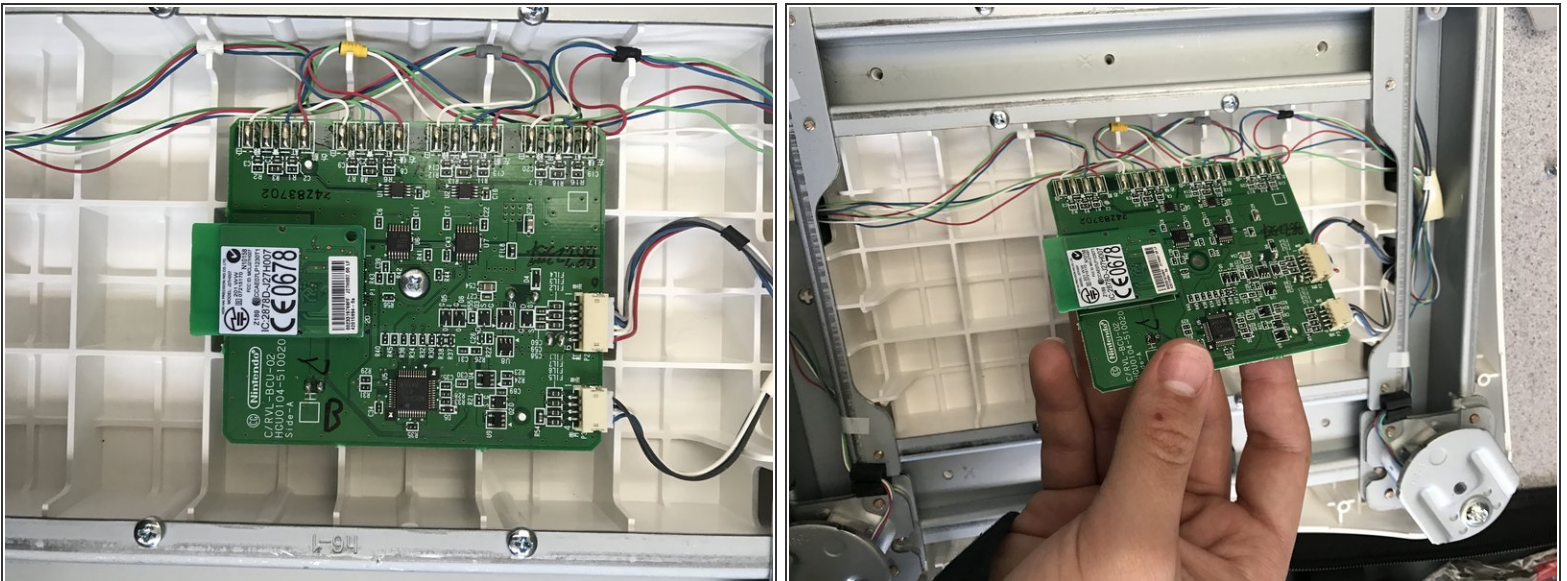
- [Phillips #1 Screwdriver](#) (1)
-

Step 1 — Wii Balance Board Teardown



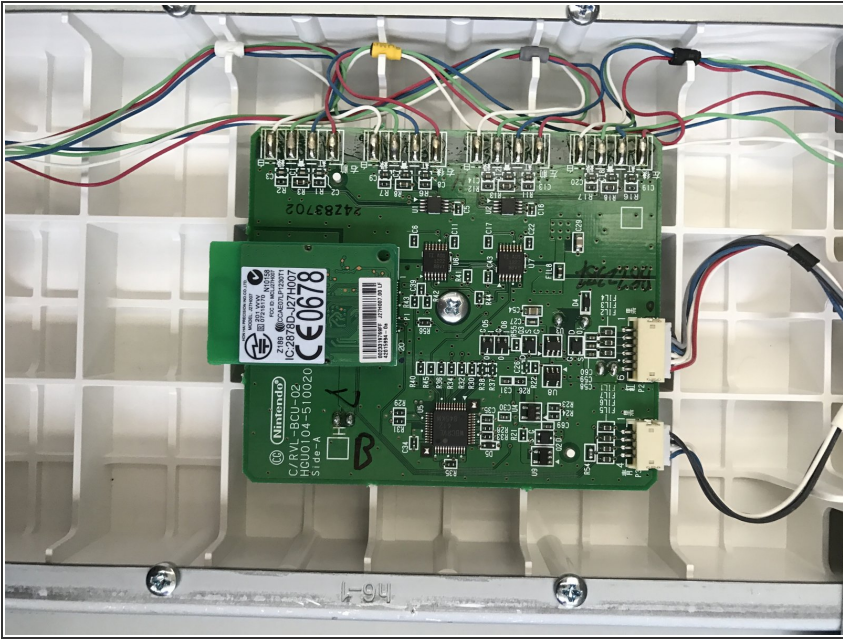
- First remove the circles from the balance board. The circles are in the corners.
 - Unscrew the 4 circles first then unscrew the middle screws that secure the base.
 - Remove the circles and the base.
- i** Don't pull off the big chip or the motherboard, just unscrew the middle so it won't break.

Step 2



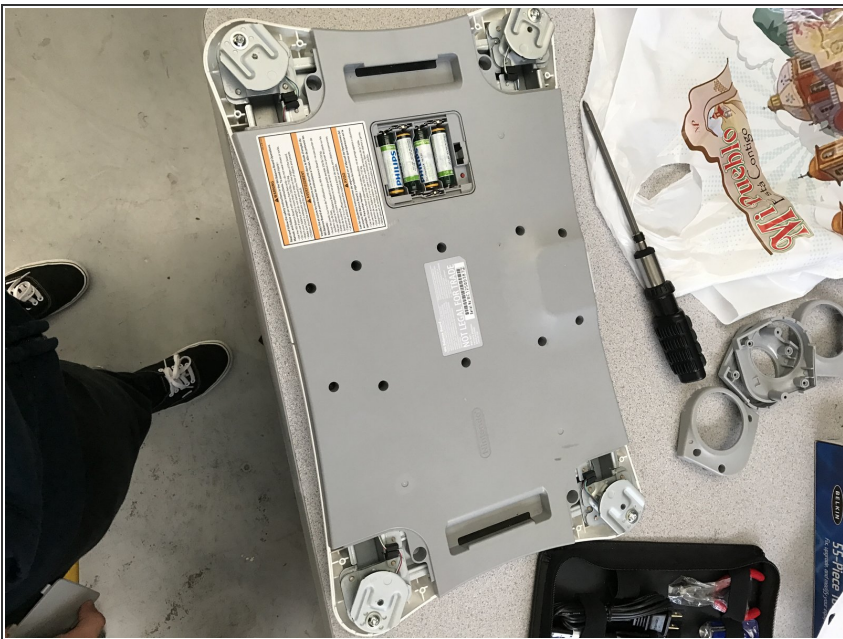
- If you want to take off the motherboard first you have to unscrew the screw in the middle then you can take it off.

Step 3



- Then when you're done, screw back the motherboard in the same place where it was.

Step 4



- When you're done screwing the motherboard in, screw back the middle piece first so you can put it back together.

Step 5



- The last step is to screw in the corners and the circles, and then you will be done.