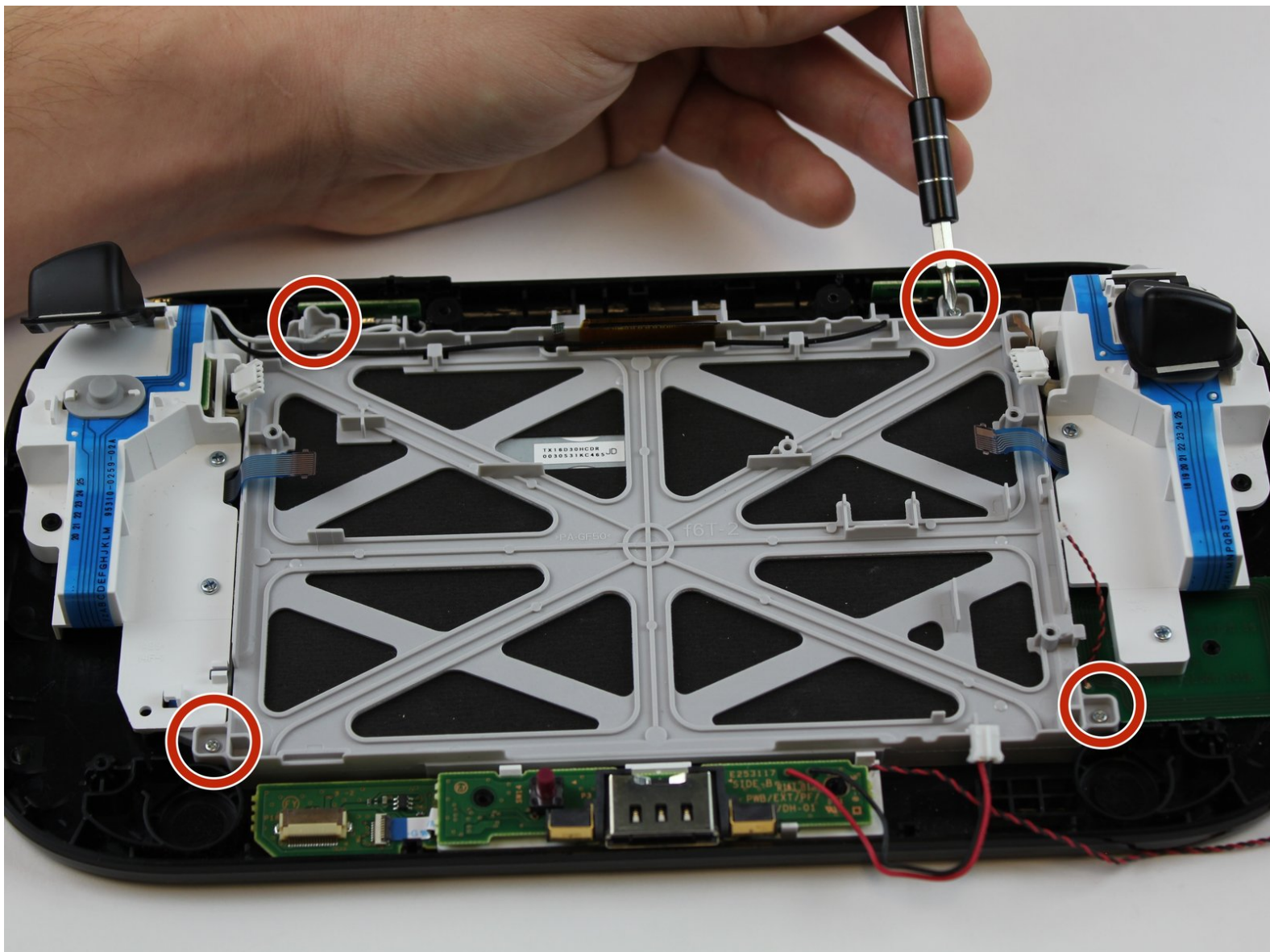




Wii U GamePad LCD Display Replacement

Replace the LCD display in order to fixed the broken LCD display

Written By: Valentina Cerruty



INTRODUCTION

This guide will help you to replace the LCD display . For this replacement, you will need to use a #00 Phillips screwdriver and a small Triwing (Y) screwdriver.



TOOLS:

- [Phillips #0 Screwdriver](#) (1)
- [Y1 Tri-point Screwdriver](#) (1)
- [Tweezers](#) (1)



PARTS:

- [Wii U GamePad Screen](#) (1)
- [Wii U GamePad LCD](#) (1)

Step 1 — Battery



- Place Gamepad face down and remove the two 4.7 mm screws with a Phillips size #00 screwdriver.

Step 2



- Lift and remove the battery plate.

Step 3



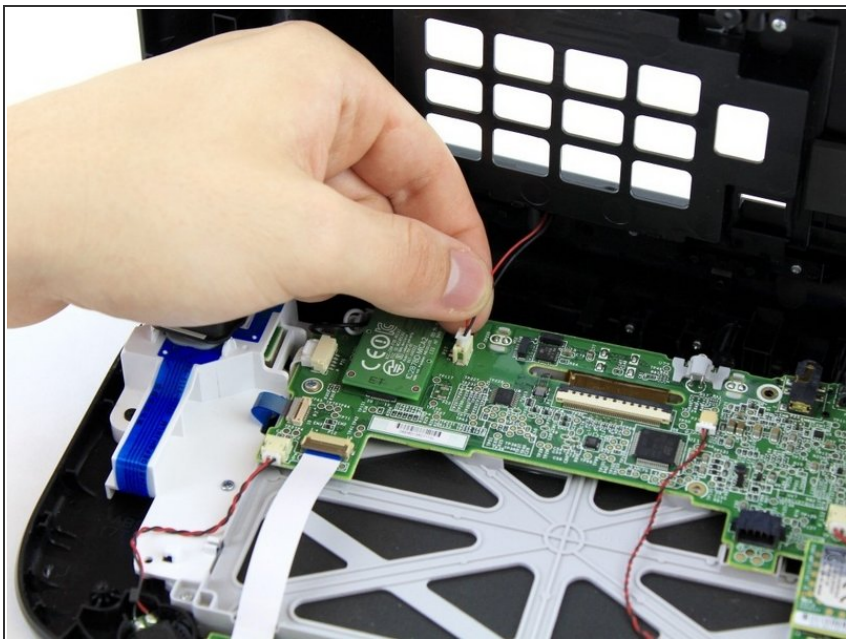
- With your finger, press down and pull back on the battery connector plug.
- Remove the battery from the battery case.

Step 4 — Outer Case



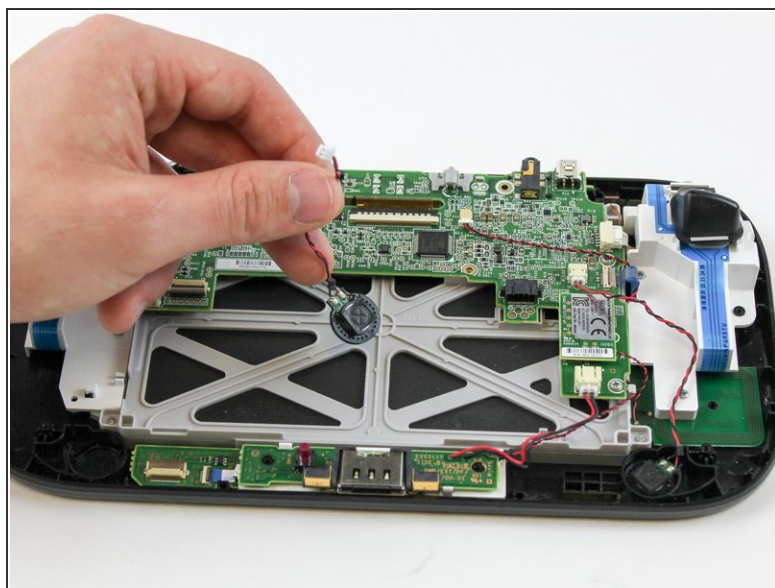
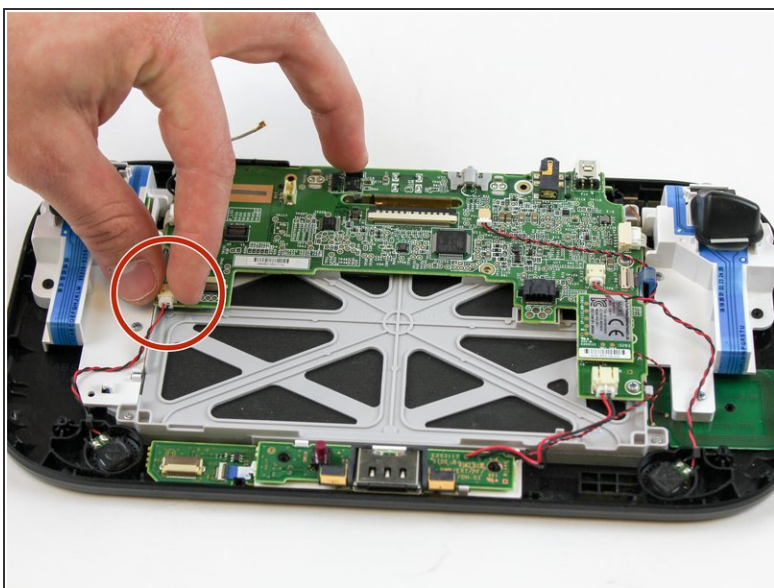
- Remove 10 9mm screws with Tri-Wing size Y1 screwdriver around the outer case.
- Lift up on the back of case.
- ⚠ Lift gently because the rumble motor in the back of the case is still connected by a cable to the motherboard.

Step 5



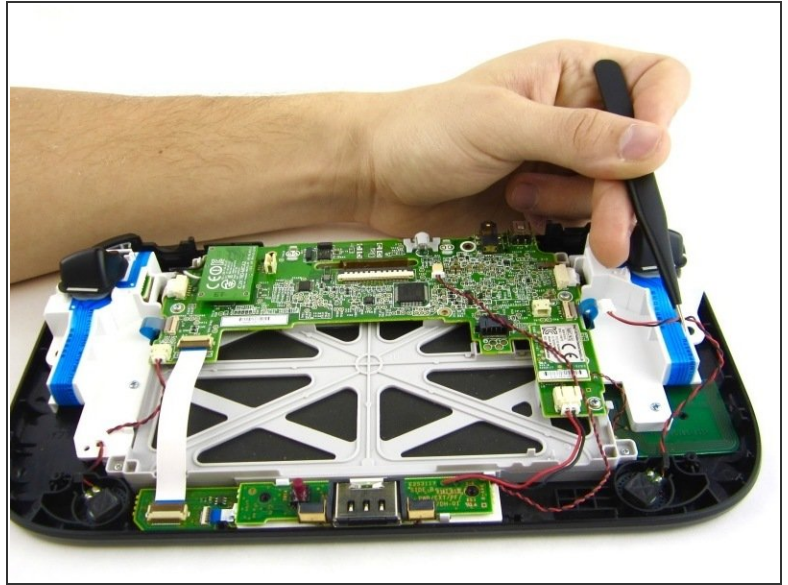
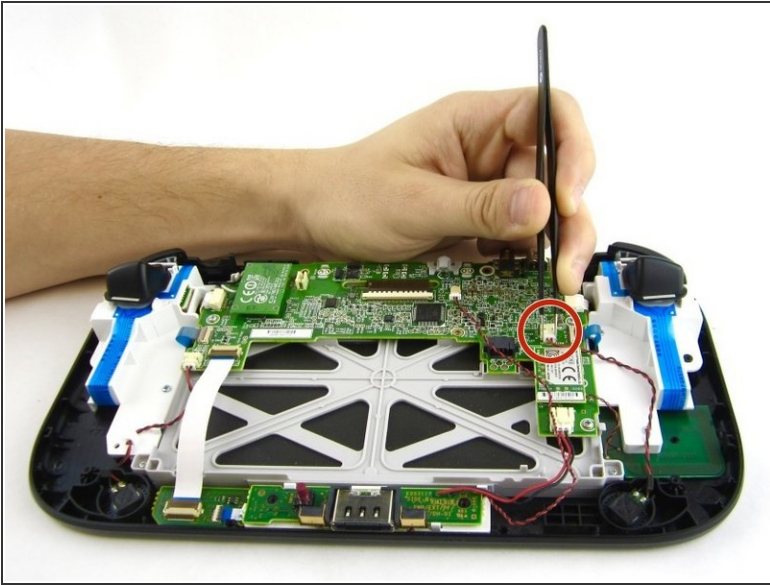
- Unplug outer case rumble motor connector from the motherboard with your fingers.

Step 6 — Speakers



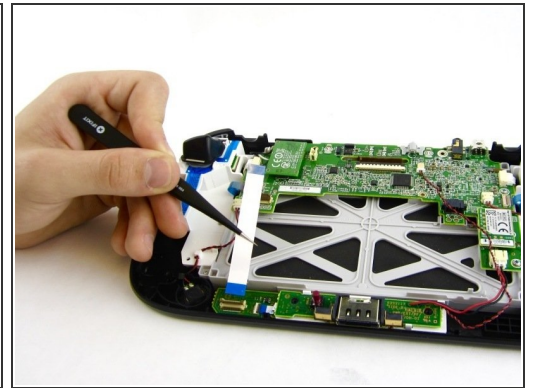
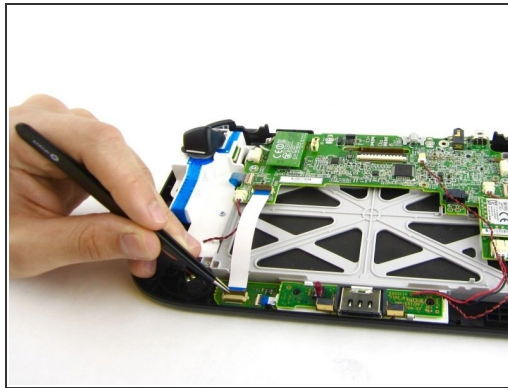
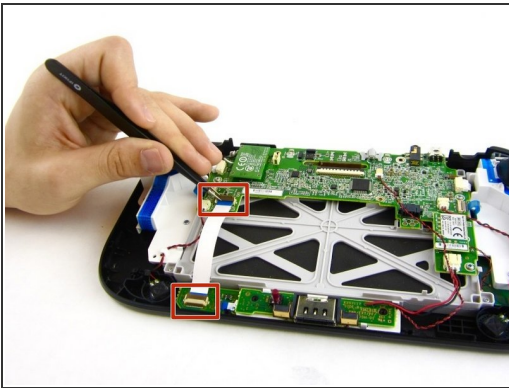
- With your fingers, unplug the left speaker cable from the motherboard.

Step 7



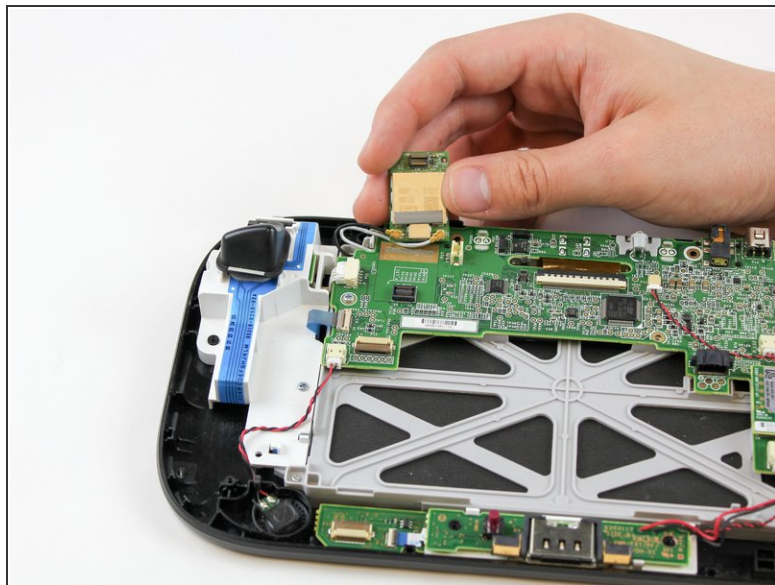
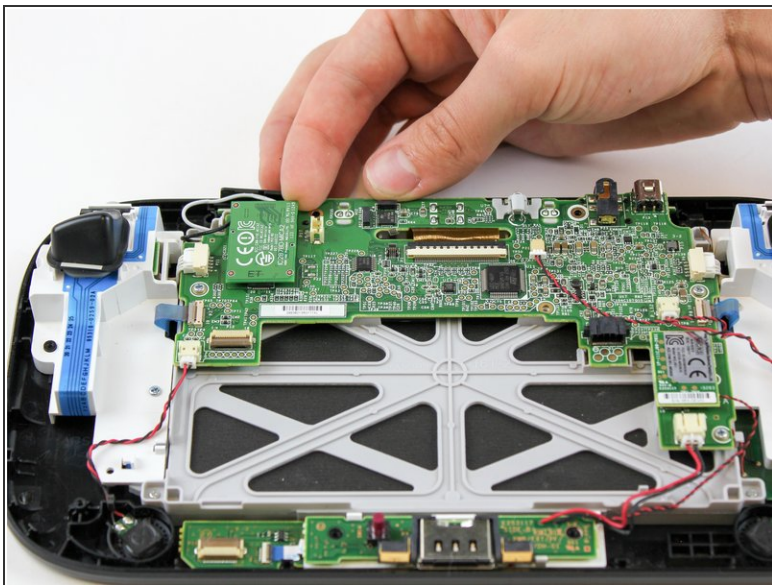
- Remove the right speaker cable that's connected to the motherboard with the tweezers.

Step 8 — Bluetooth



- Open the top and bottom clasp that connects the white flex cable to the motherboard with the tweezers.
- Remove the white flex cable with the tweezers.

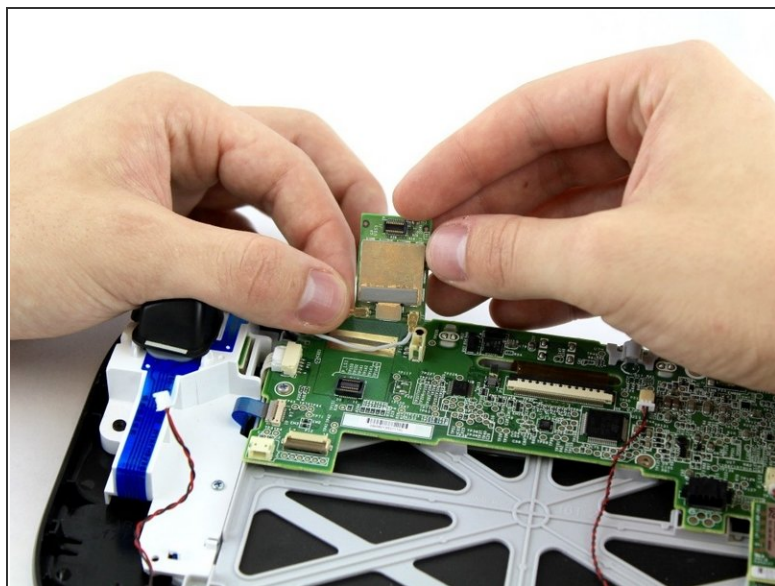
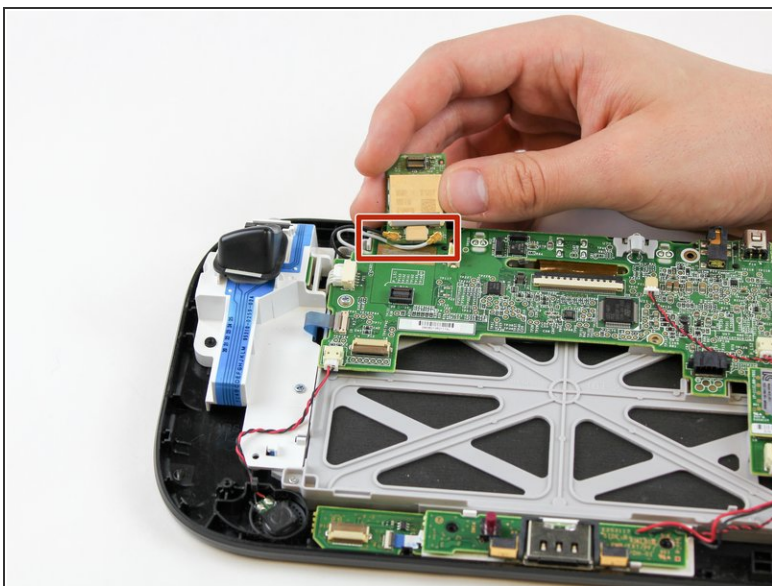
Step 9



- With your fingers, lift and remove bluetooth board.

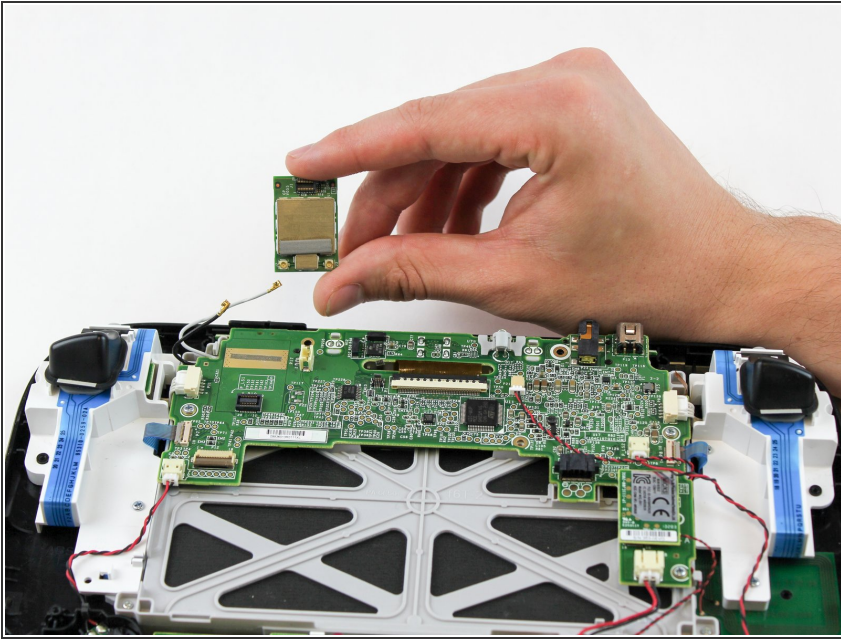
⚠ Remove the board carefully as there are still two wires attached.

Step 10



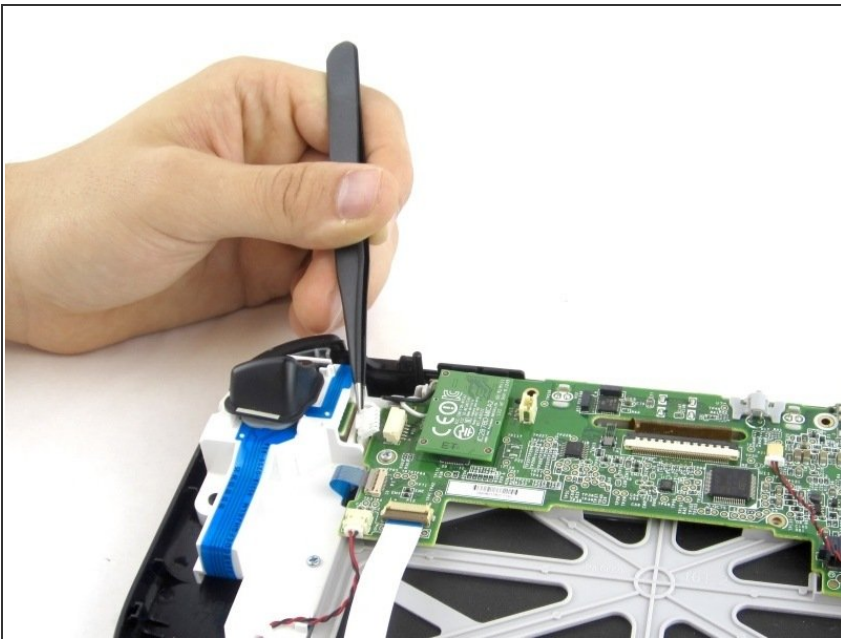
- Disconnect the black and white wires off of the back of the bluetooth module.

Step 11



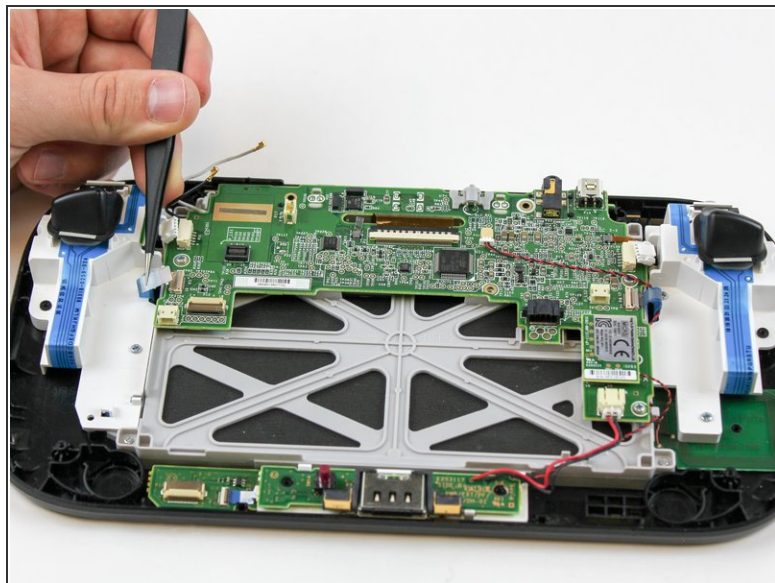
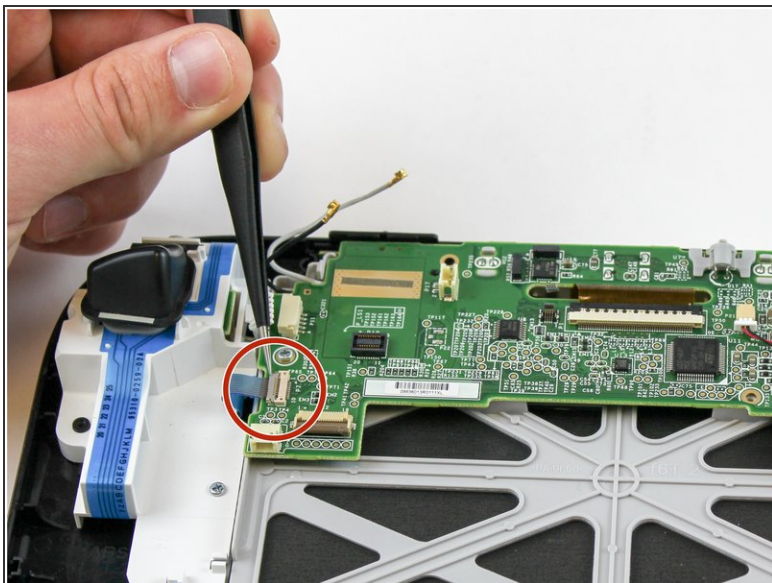
- Lift and remove the bluetooth module.

Step 12 — Motherboard



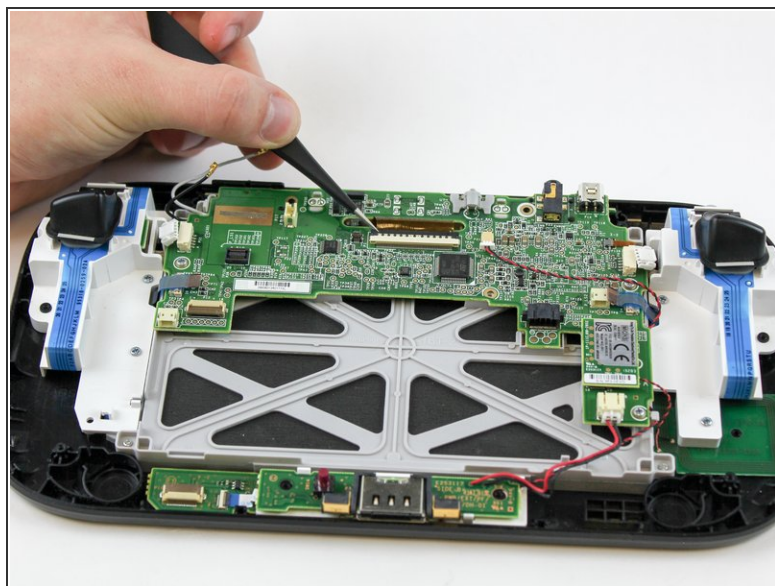
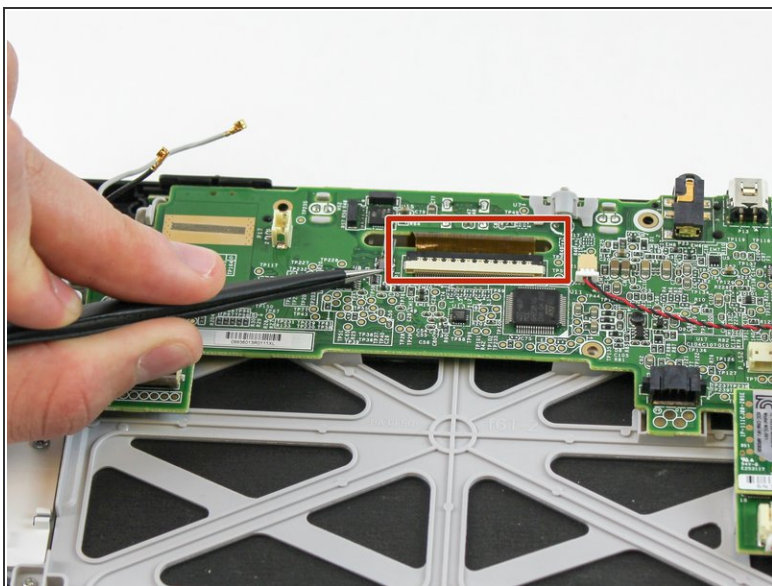
- Disconnect the analog connector with tweezers.

Step 13



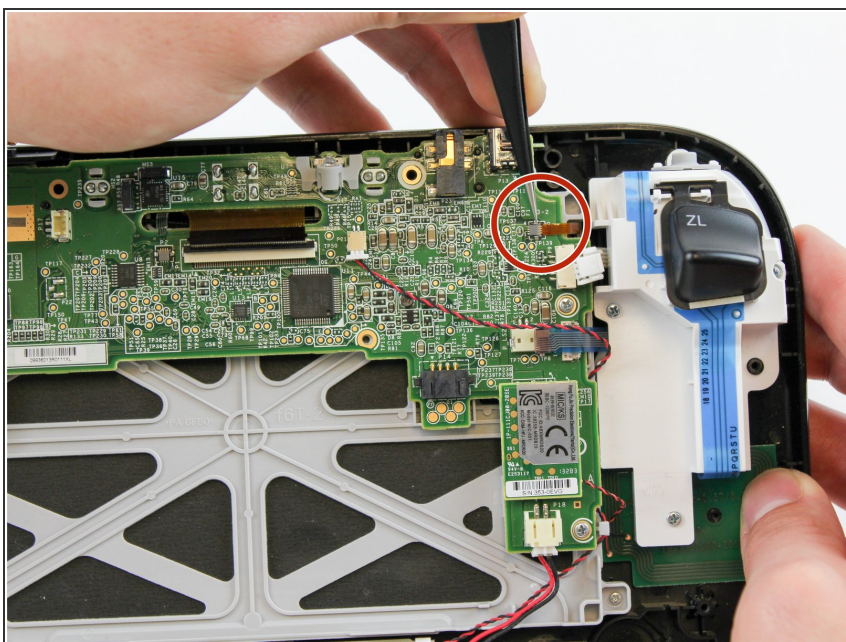
- Remove the blue connector using tweezers.

Step 14



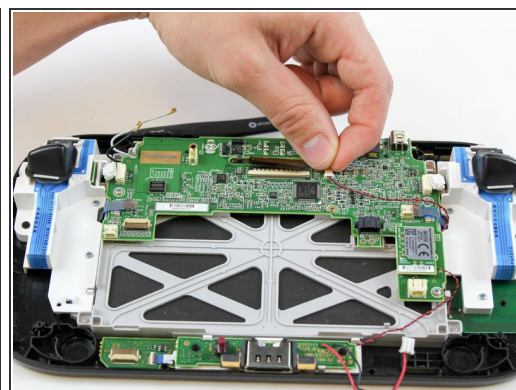
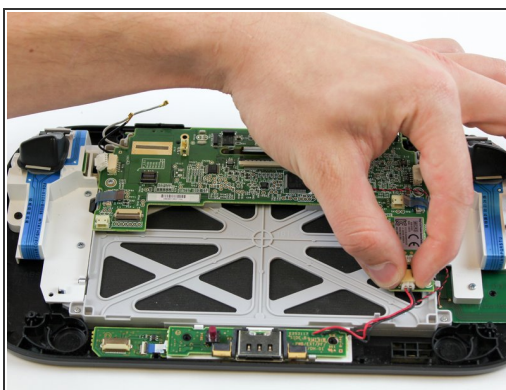
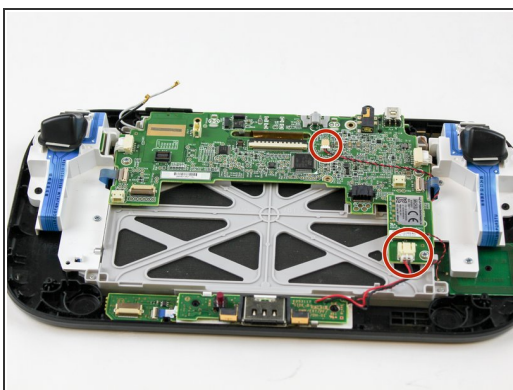
- Carefully lift the black clasp. It is prone to breaking if only lifted from one point. Remove the brown ribbon by using the tweezers.
- Unclasp small gray ribbon to the left of the brown ribbon.

Step 15



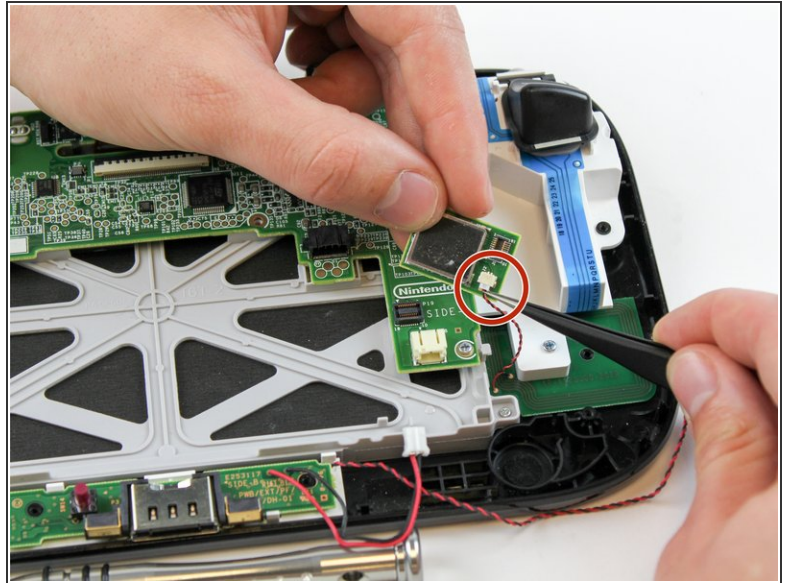
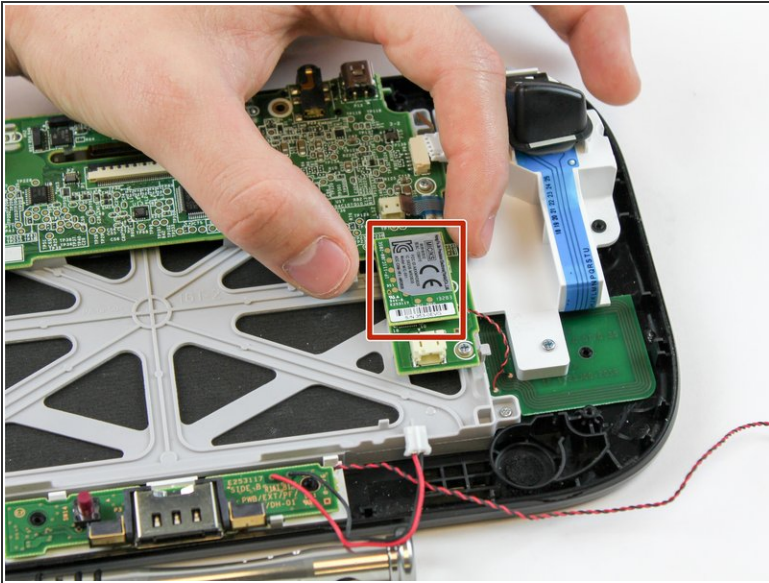
- Remove the small orange ribbon with the tweezers.

Step 16



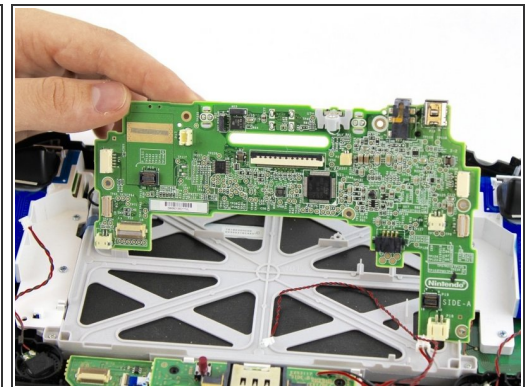
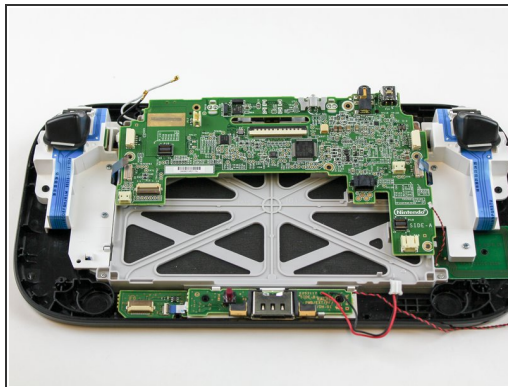
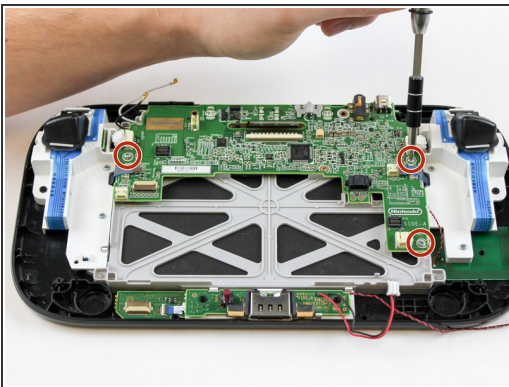
- Remove these two connectors to the motherboard with your fingers.

Step 17



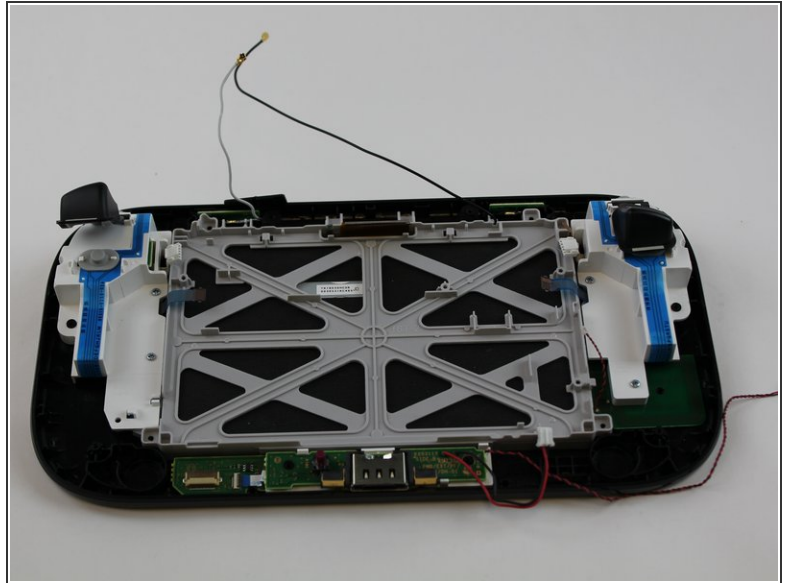
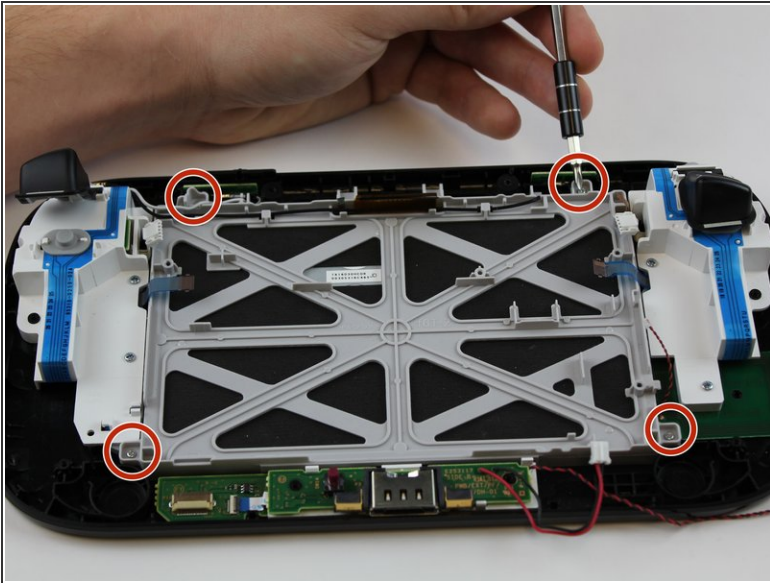
- Remove the NFC communicator.
- ⚠ When removing the NFC communicator, be careful with the small connector on the back side.
- Remove the small connector plug-in on the back.

Step 18



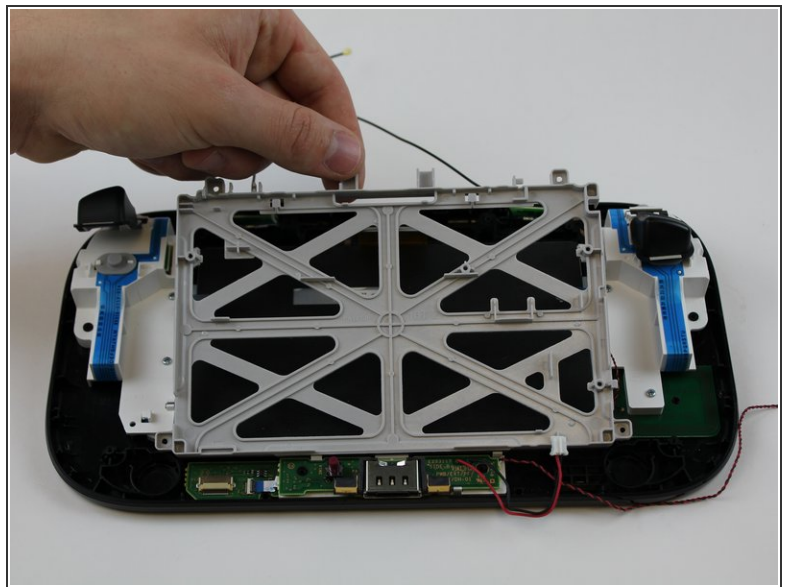
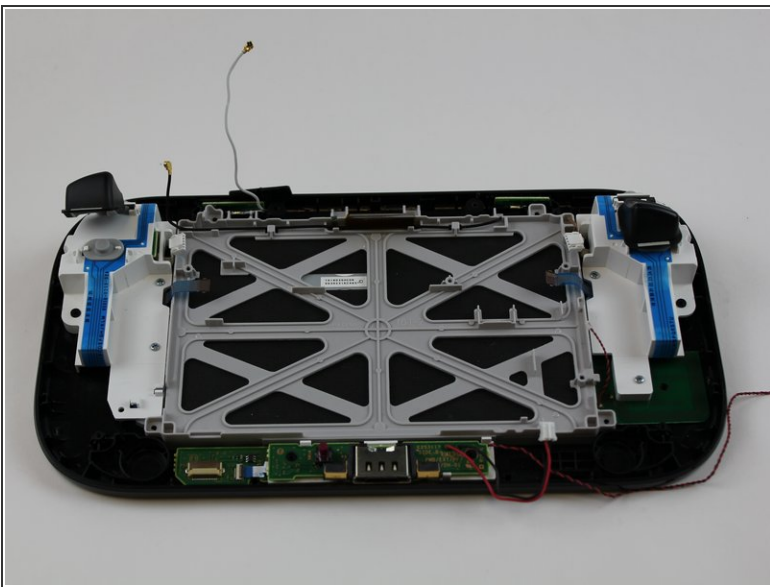
- Remove the remaining three 5.1 mm screws using the Phillips size #0 screwdriver.
- Lift and remove the mother board.

Step 19 — LCD Display



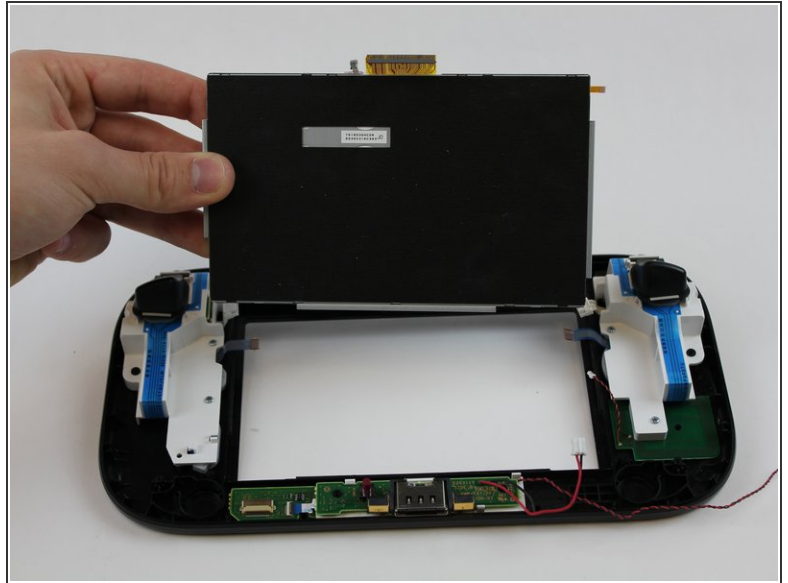
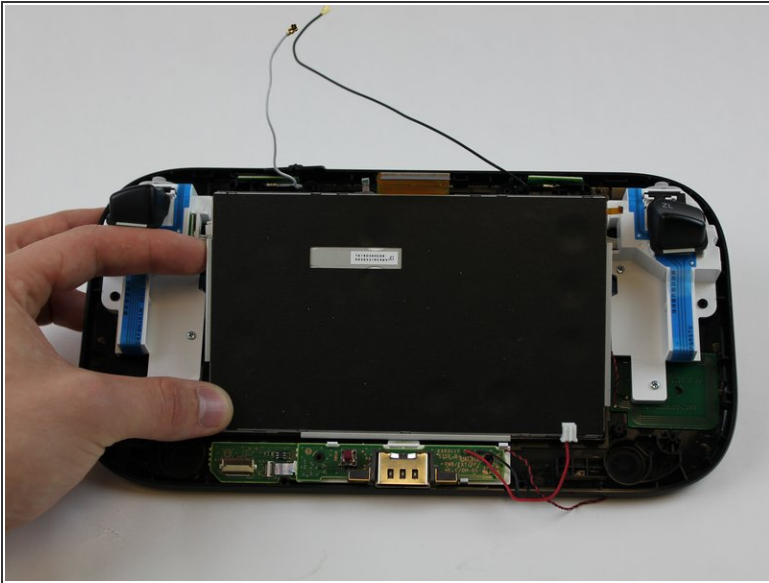
- Remove the four 5.1mm screws using Phillips size #0 screwdriver.
- Pull the white and black cables away from the display case.

Step 20



- Lift and remove the grey display case with your fingers.

Step 21



- Gently with your fingers, press on the front of the display and it will lift up.
- Remove the display with your fingers.

To reassemble your device, follow these instructions in reverse order.