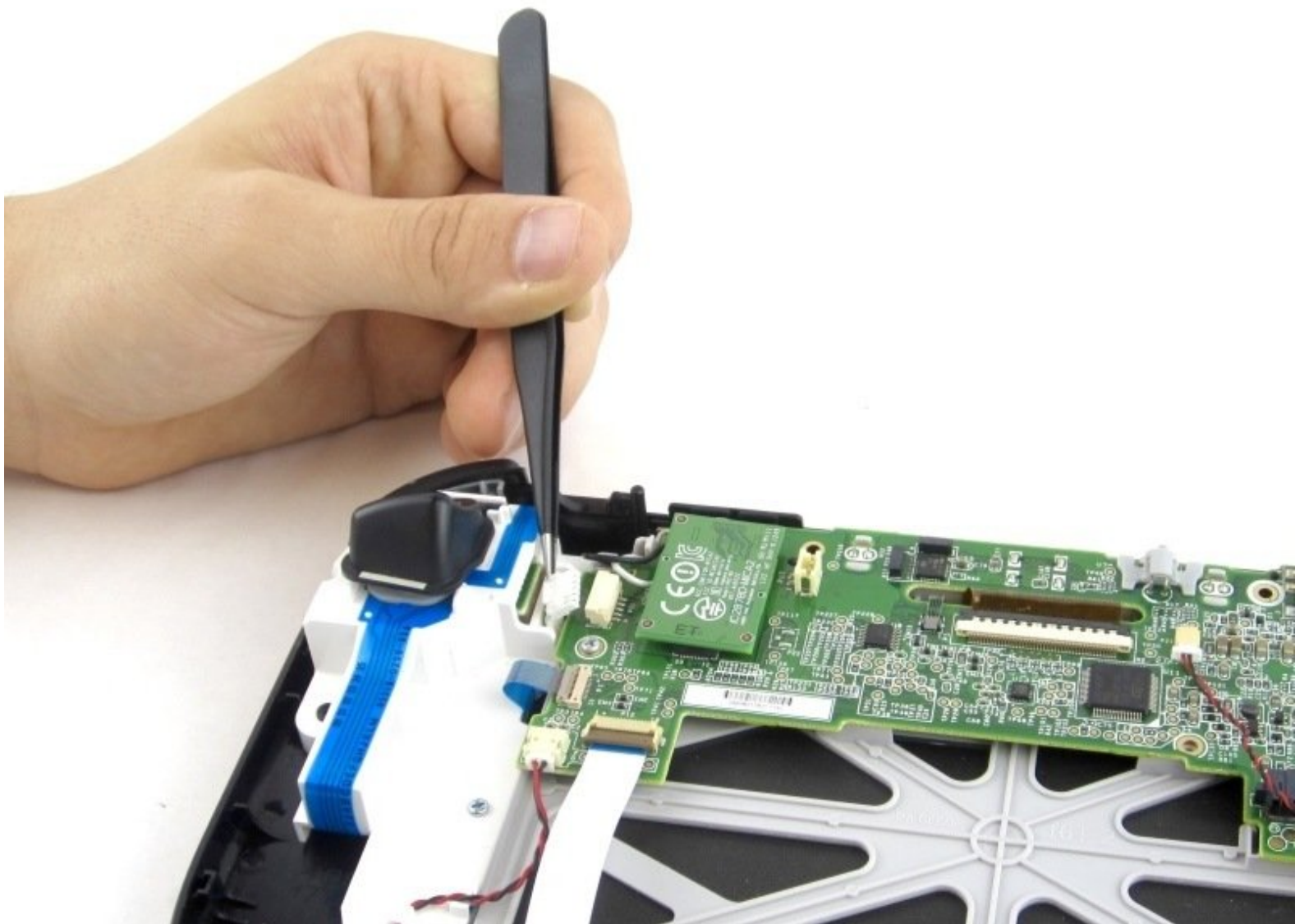




Wii U GamePad Motherboard Replacement

Replace the motherboard, if your Nintendo Wii U Gamepad doesn't turn on and the battery is good

Written By: Valentina Cerruty



INTRODUCTION

This guide will help you to replace your motherboard. For this replacement, You will need the tool #PH0 and tweezers.



TOOLS:

- [Tweezers](#) (1)
- [Phillips #0 Screwdriver](#) (1)
- [Y1 Tri-point Screwdriver](#) (1)



PARTS:

- [Nintendo Wii U GamePad Motherboard](#) (1)
- [Nintendo Wii U GamePad Charging Assembly](#) (1)
- [Wii U GamePad Power Button Board](#) (1)

Step 1 — Battery



- Place Gamepad face down and remove the two 4.7 mm screws with a Phillips size #00 screwdriver.

Step 2



- Lift and remove the battery plate.

Step 3



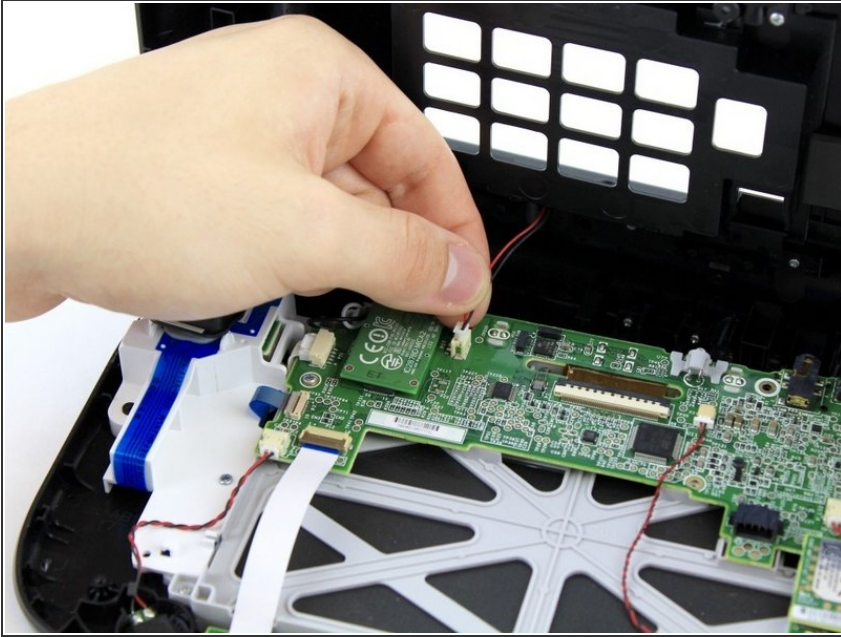
- With your finger, press down and pull back on the battery connector plug.
- Remove the battery from the battery case.

Step 4 — Outer Case



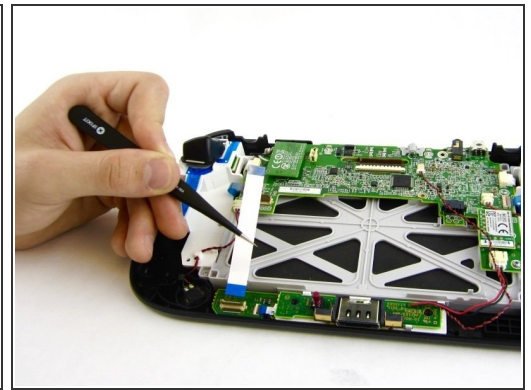
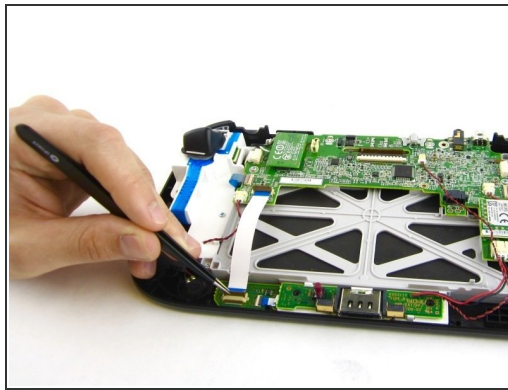
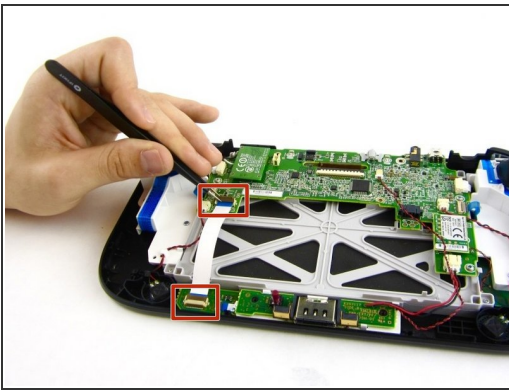
- Remove 10 9mm screws with Tri-Wing size Y1 screwdriver around the outer case.
- Lift up on the back of case.
- ⚠ Lift gently because the rumble motor in the back of the case is still connected by a cable to the motherboard.

Step 5



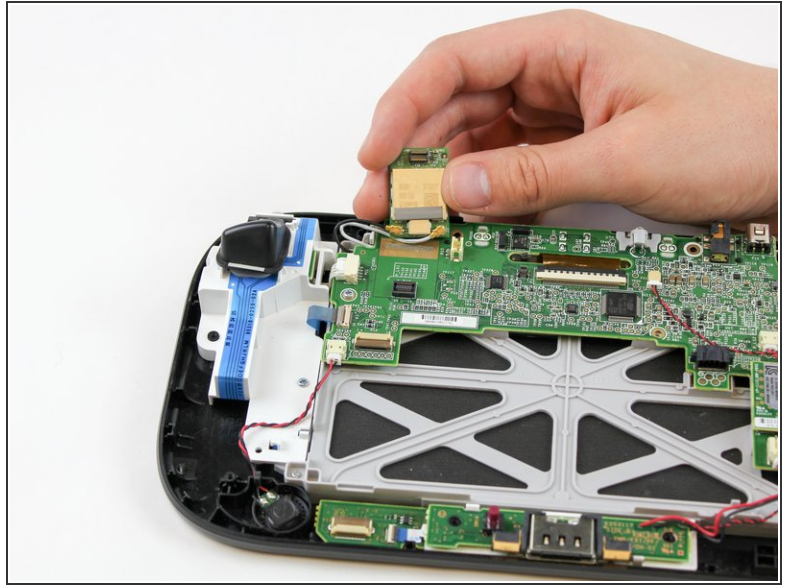
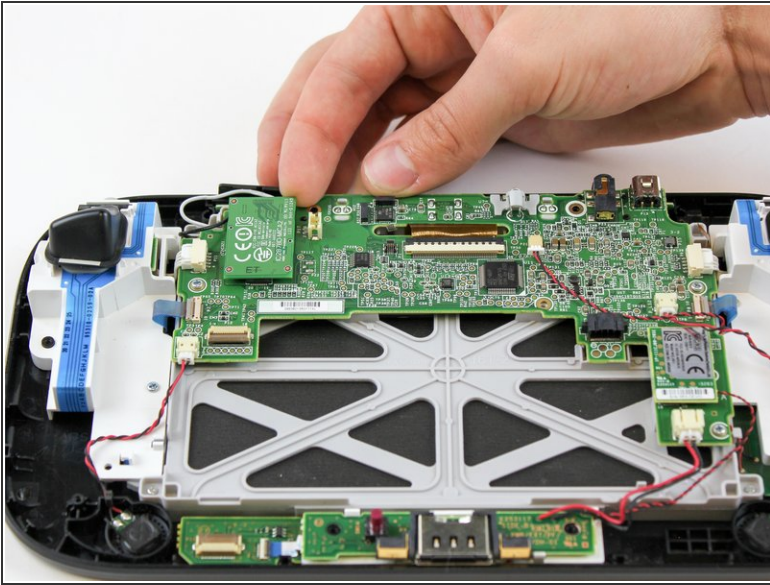
- Unplug outer case rumble motor connector from the motherboard with your fingers.

Step 6 — Bluetooth



- Open the top and bottom clasp that connects the white flex cable to the motherboard with the tweezers.
- Remove the white flex cable with the tweezers.

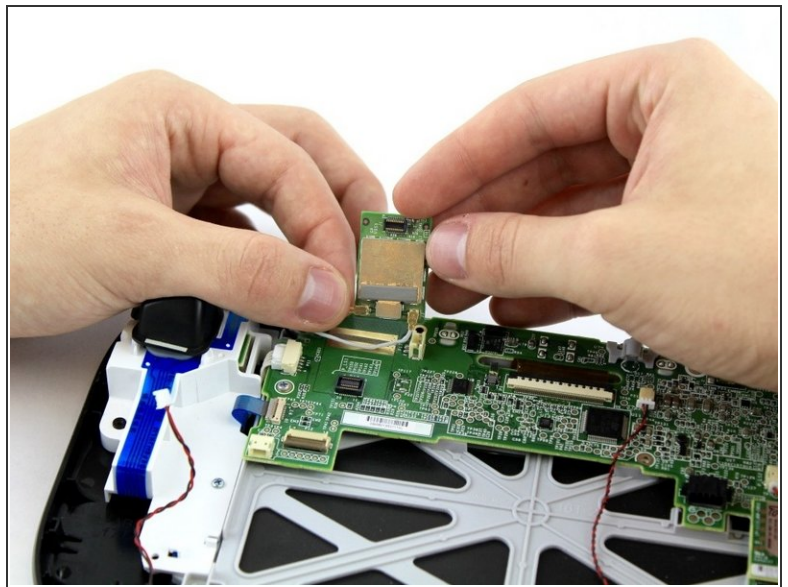
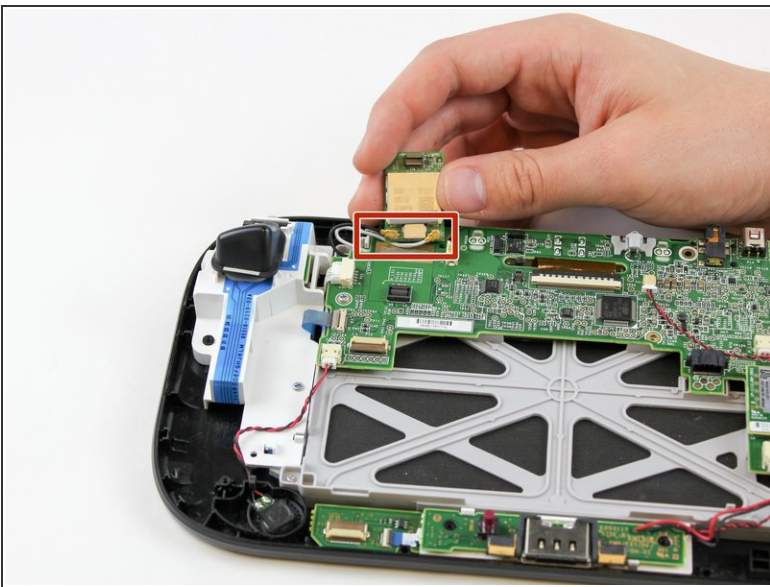
Step 7



- With your fingers, lift and remove bluetooth board.

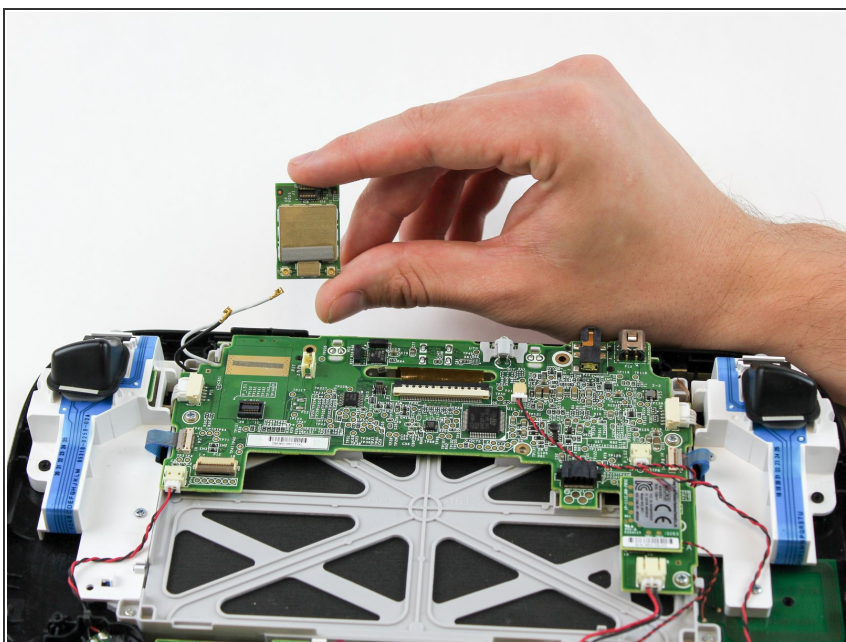
⚠ Remove the board carefully as there are still two wires attached.

Step 8



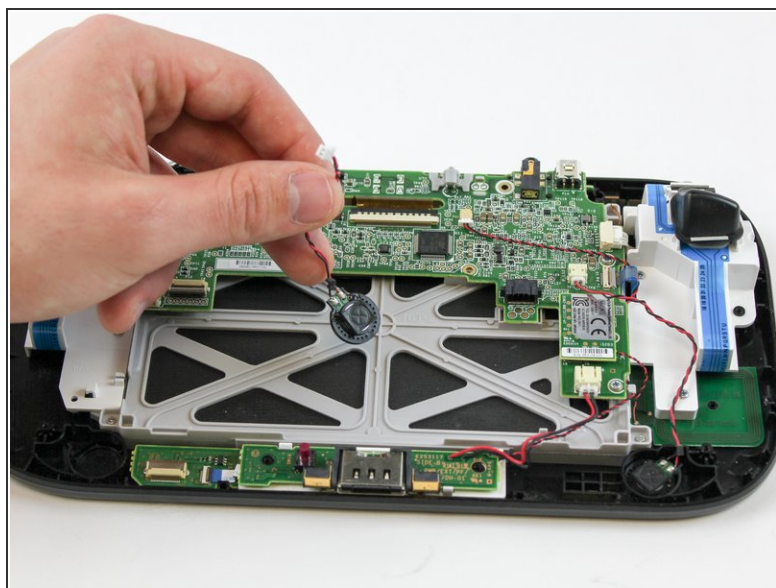
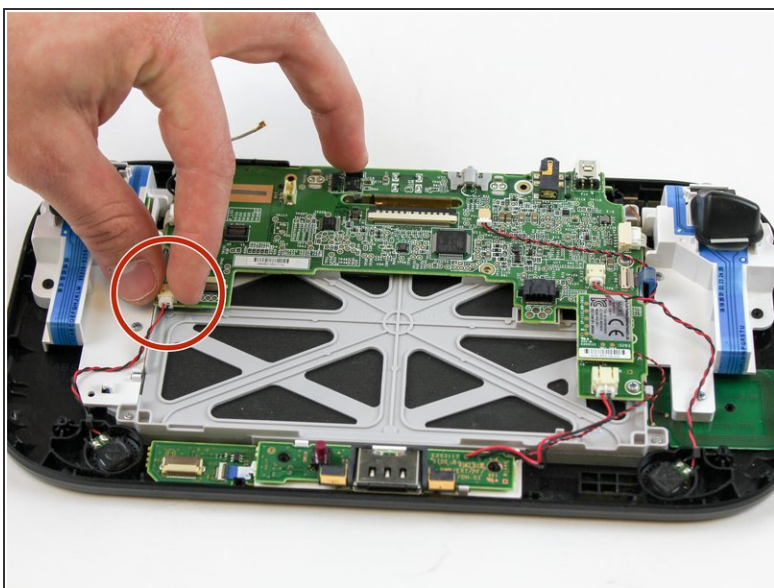
- Disconnect the black and white wires off of the back of the bluetooth module.

Step 9



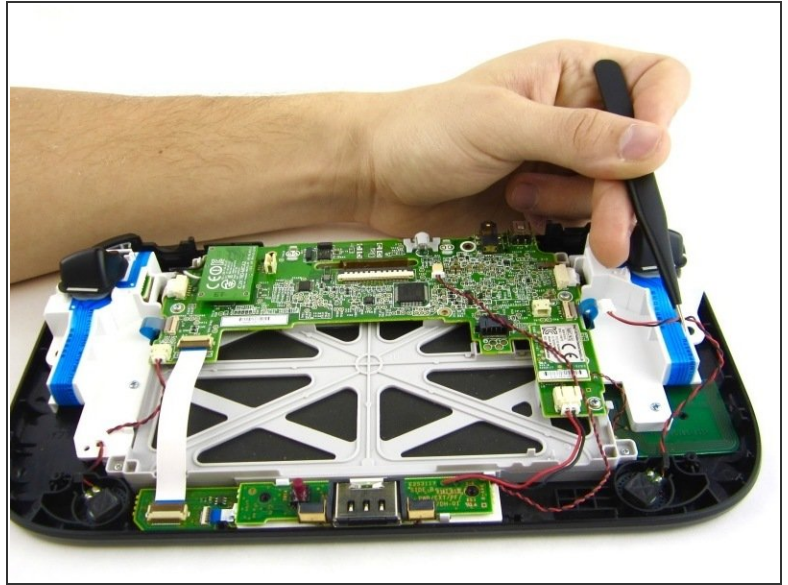
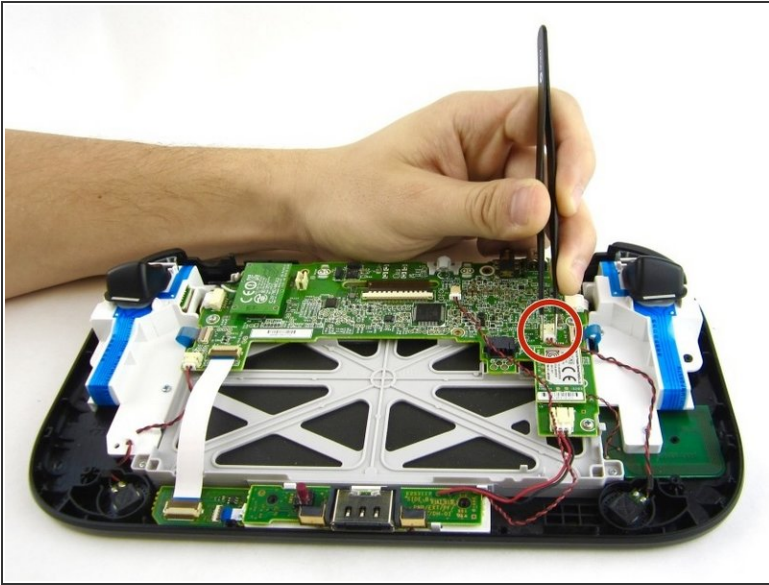
- Lift and remove the bluetooth module.

Step 10 — Speakers



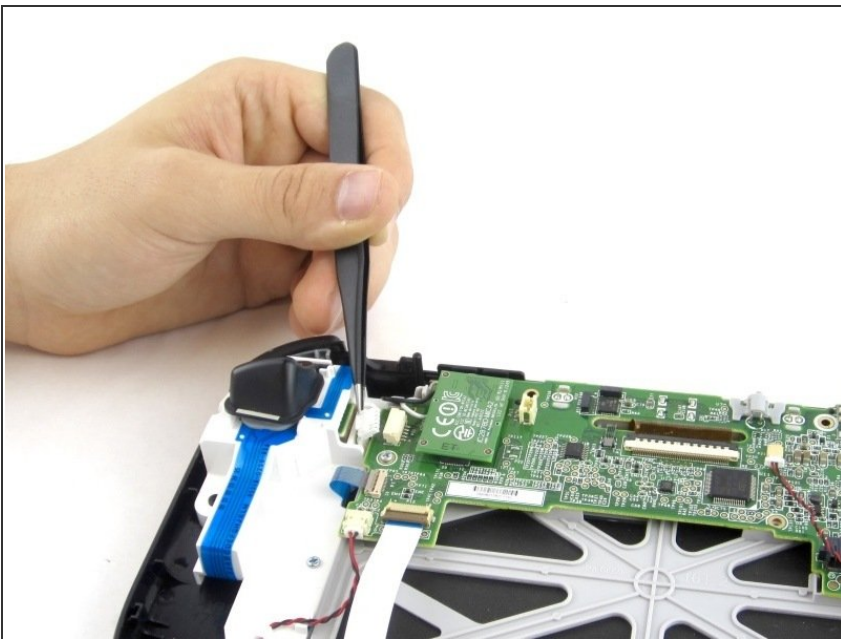
- With your fingers, unplug the left speaker cable from the motherboard.

Step 11



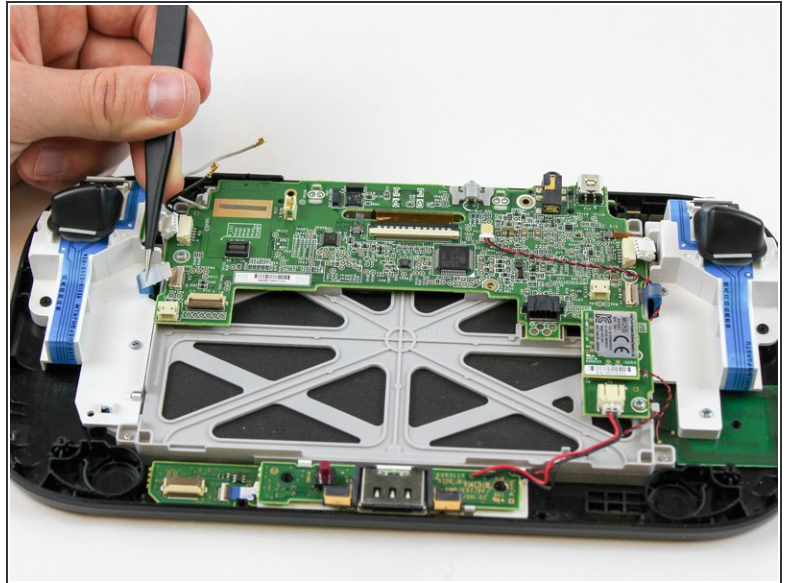
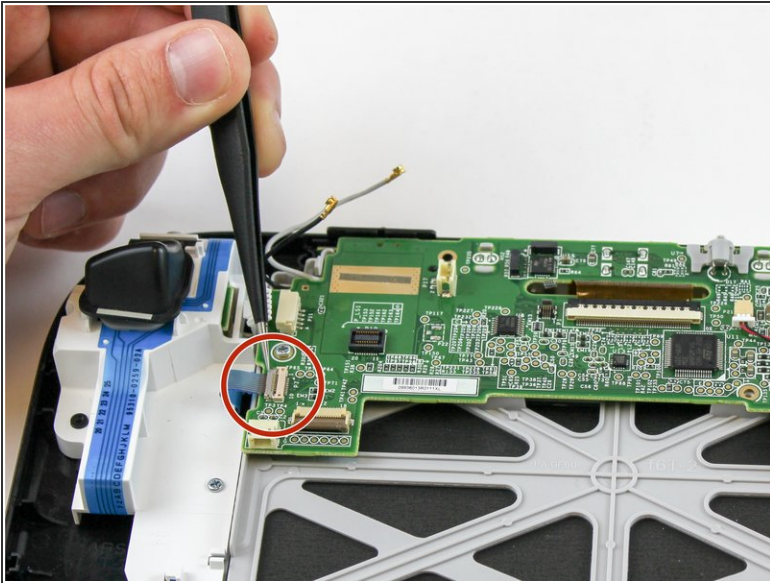
- Remove the right speaker cable that's connected to the motherboard with the tweezers.

Step 12 — Motherboard



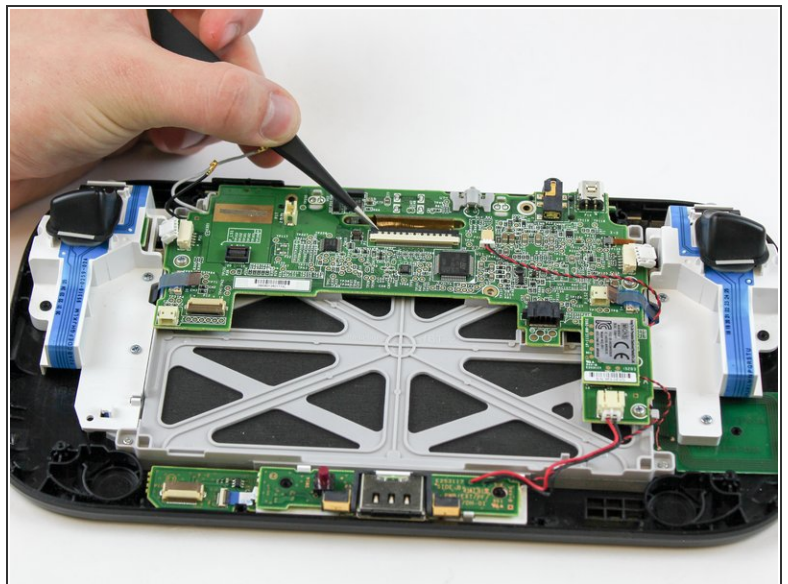
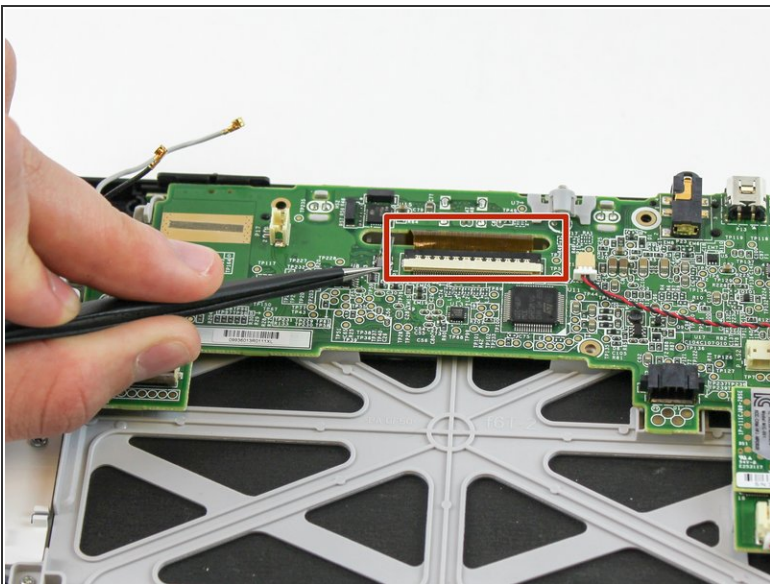
- Disconnect the analog connector with tweezers.

Step 13



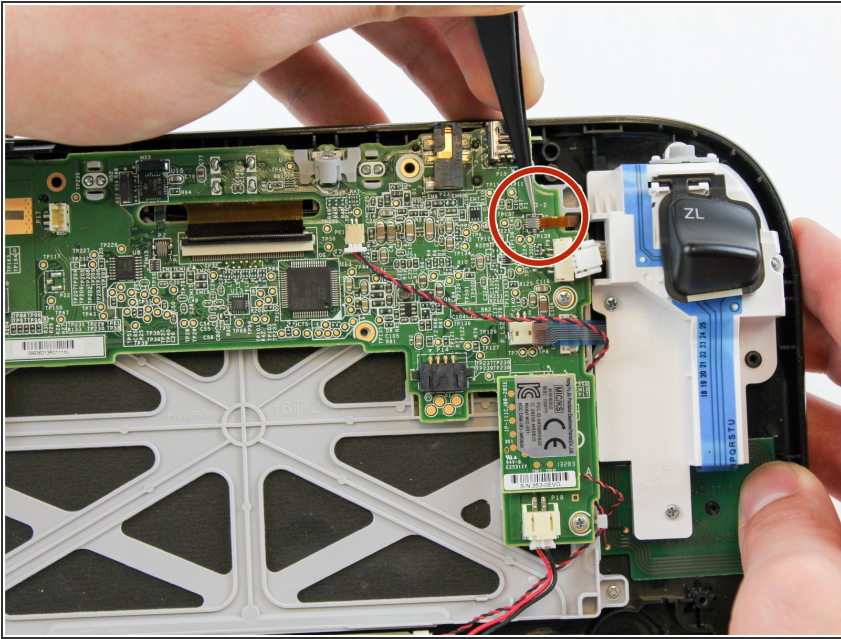
- Remove the blue connector using tweezers.

Step 14



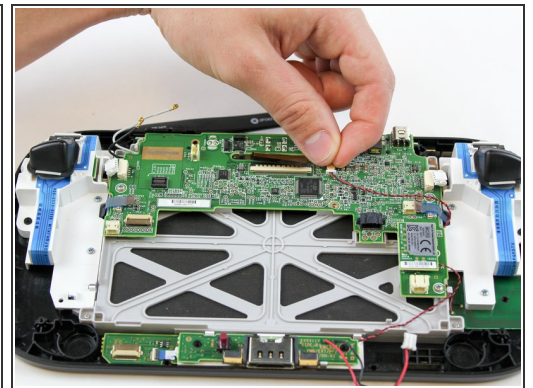
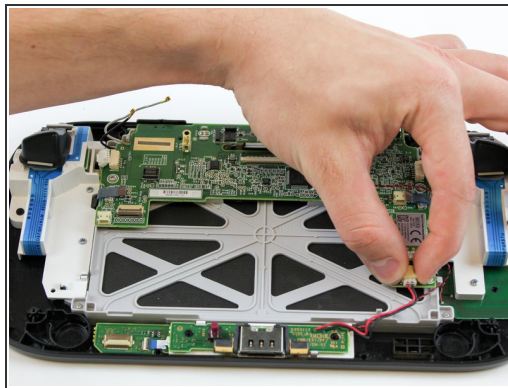
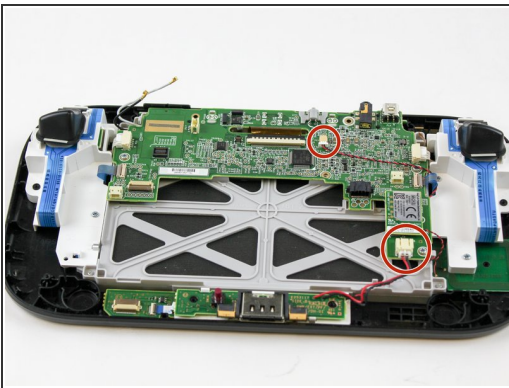
- Carefully lift the black clasp. It is prone to breaking if only lifted from one point. Remove the brown ribbon by using the tweezers.
- Unclasp small gray ribbon to the left of the brown ribbon.

Step 15



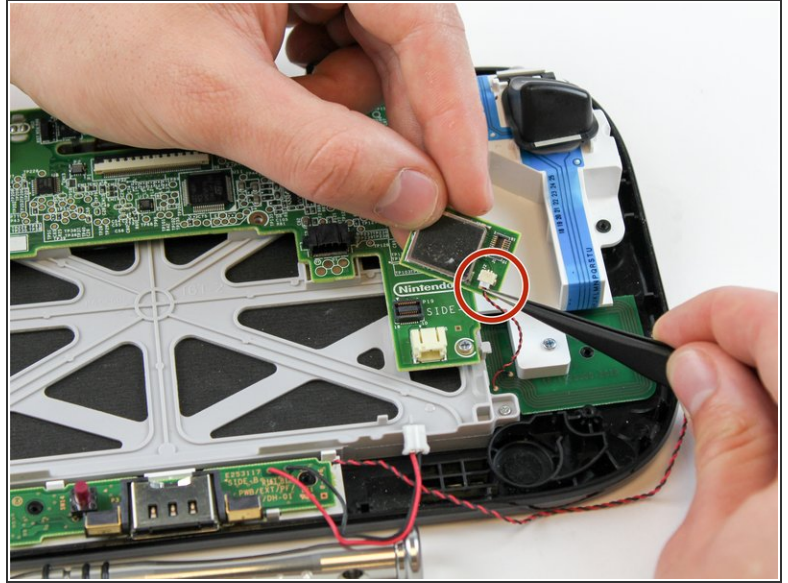
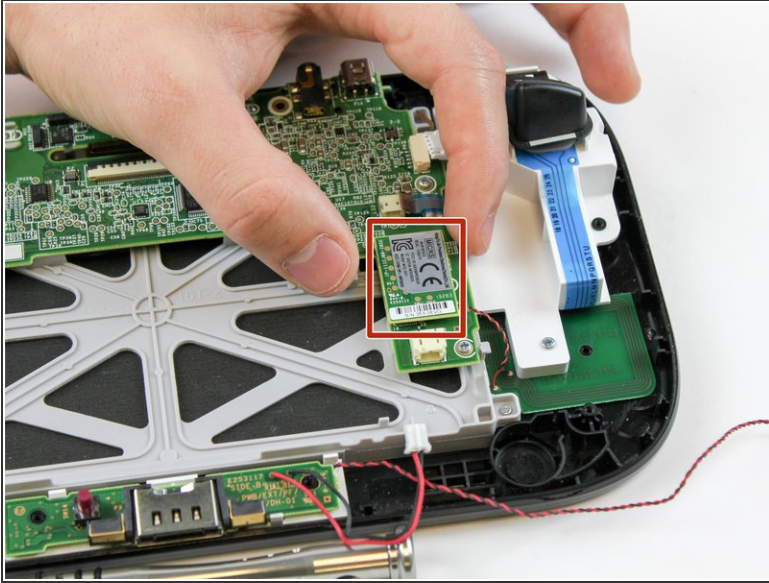
- Remove the small orange ribbon with the tweezers.

Step 16



- Remove these two connectors to the motherboard with your fingers.

Step 17

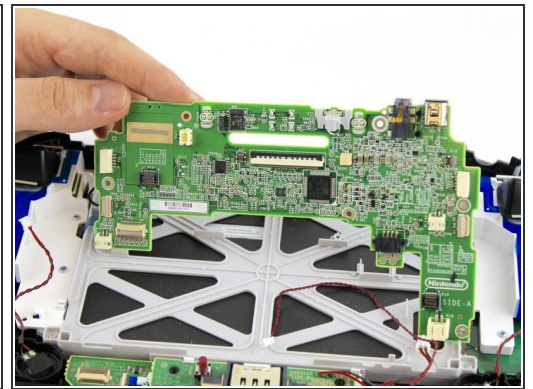
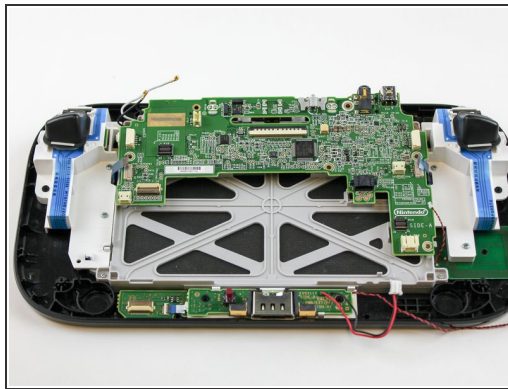
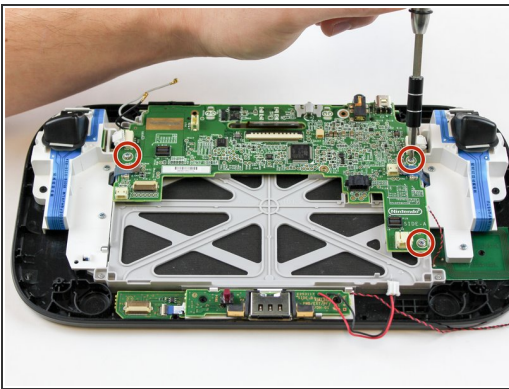


- Remove the NFC communicator.

⚠ When removing the NFC communicator, be careful with the small connector on the back side.

- Remove the small connector plug-in on the back.

Step 18



- Remove the remaining three 5.1 mm screws using the Phillips size #0 screwdriver.
- Lift and remove the motherboard.

To reassemble your device, follow these instructions in reverse order.

This document was generated on 2019-09-19 05:56:16 AM (MST).

