



Wileyfox Swift Disassembly

In this guide I'll show you how to completely tear down a Wileyfox Swift.

Written By: ZzLy





TOOLS:

- [Pro Tech Toolkit](#) (1)
-

Step 1 — Back case



- Start off by shutting down the device and removing the back case .

Step 2 — Battery



- Now remove the battery and any sim/SD card(s).
- ⓘ The battery is 2500mAh.

Step 3 — Mid frame



- Undo these nine screws.

Step 4



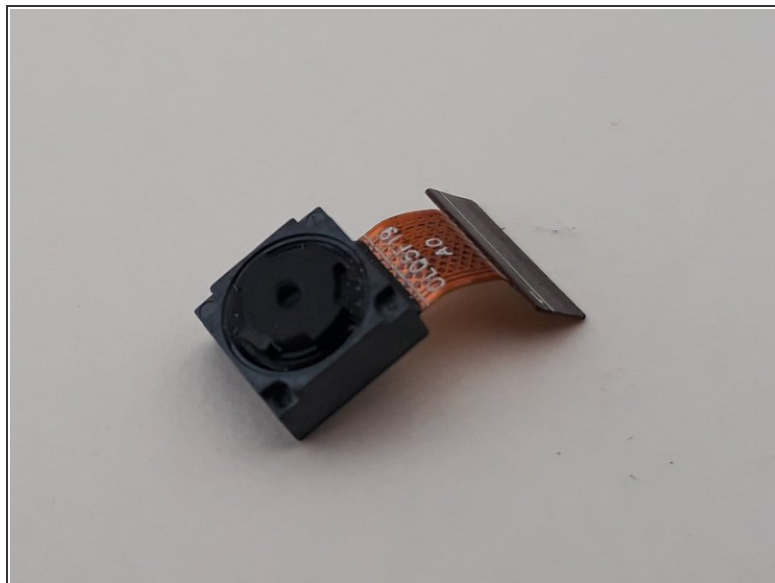
- Pry between the silver plastic layer and the screen. Go all around the device until it's separated.

Step 5 — Motherboard



- Undo these two ribbons
- And undo these two screws.
- Lift up the vibrator motor after which you can lift up the motherboard and remove the antenna cable on the underside
- ⓘ The motherboard packs a Qualcomm Snapdragon 410 Quad core running at 1.2 Ghz, an Adreno 306 GPU, 2GB ram, and 16GB flash memory.

Step 6 — Cameras



- At this point you can also remove the two cameras.
- ⓘ The back facing camera is 13MP and can shoot 1080p 60fps video, while the front camera is only 5MP.

Step 7 — Plastic shroud



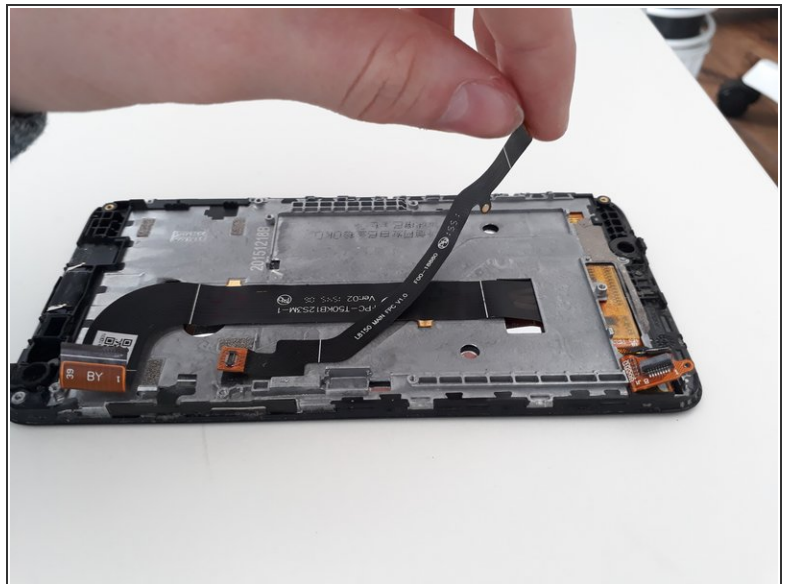
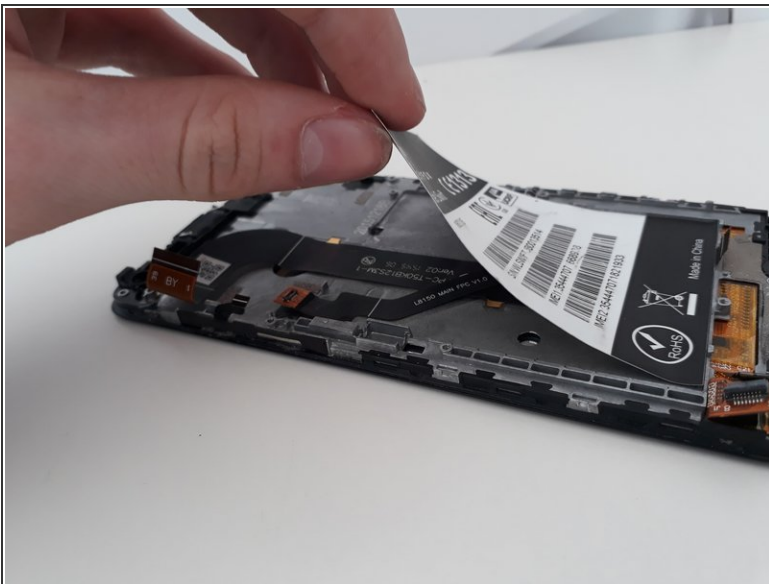
- Remove this black plastic shroud containing the bottom speaker.

Step 8 — Dock board



- Undo this ribbon cable
- And this screw
- You can now remove the antenna cable on the right and lift up the dock board
- ❗ It has a micro-USB connector.

Step 9 — Sticky stuff



- Peel off the sticker and the ribbon cable leading to the dock.

Step 10 — Ribbon




- Undo this ribbon cable, also in preparation for the next step

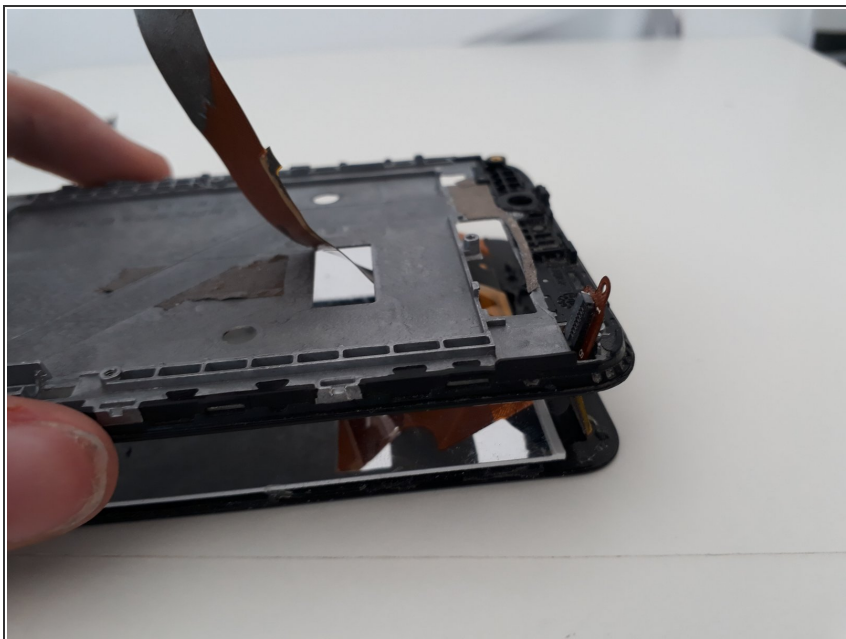
Step 11 — Screen



- Heat up the screen with a heat gun or iOpener so it's just too hot to touch. Pry between the screen and the plastic layer around it. Go all around the device until the screen is completely seperated.

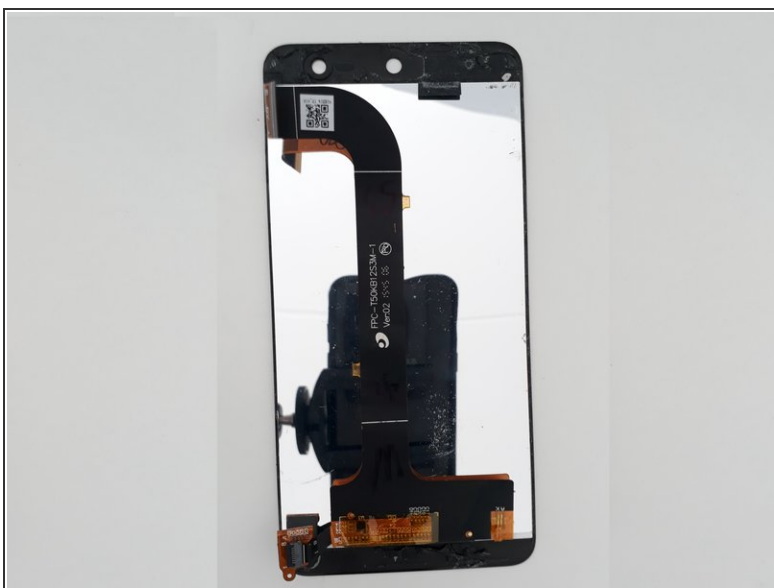
 Keep your tool under the white layer (the LCD) as shown in the picture. Otherwise you can damage it.

Step 12



- Lift up the gray plastic and make sure to guide the ribbons through their holes.

Step 13 — Completion



- Teardown complete!
- ⓘ Your replacement screen will look like this.

To reassemble your device, follow these instructions in reverse order.