



# Window/door alarm MC06-1 - Making it beep again

I teared down my not-beeping door alarm to find out it wasn't soldered right.

Written By: Anke



---

## INTRODUCTION

Tearing down my door alarm to see what's broken - it should beep hard but it isn't. It's a pretty fragile thing that could use some new fixation. (I didn't photograph the magnet that's next to it but it exists and the alarm stops when it is close to the device).



### TOOLS:

- [Soldering Iron](#) (1)
  - [Phillips #1 Screwdriver](#) (1)
-

## Step 1 — My alarm



- This is a beautiful not-alarming alarm

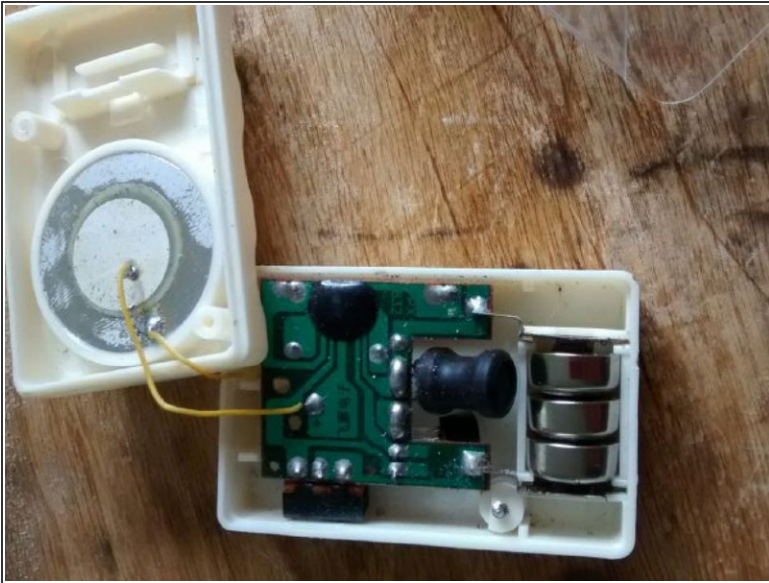
## Step 2 — Getting inside the alarm



- There is a screw hidden underneath the adhesive strip. Screw it open to get in

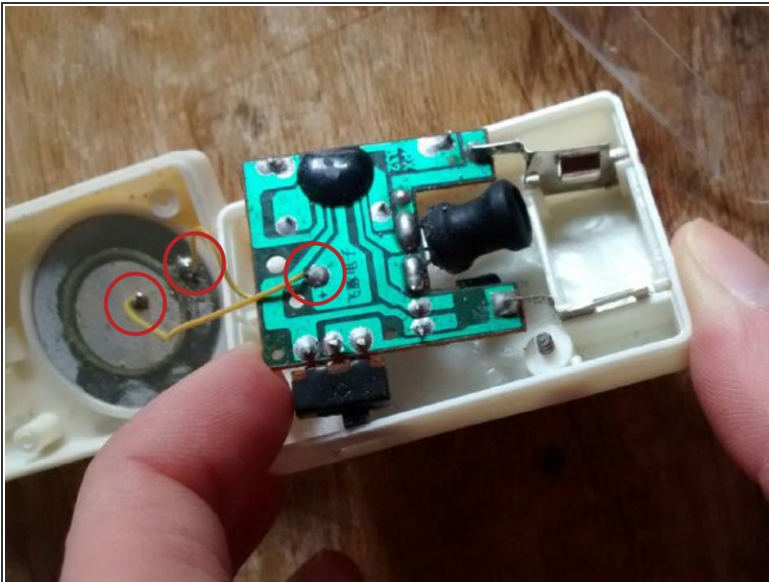


### Step 3 — Batteries



- Remove the batteries so you won't frighten yourself by a suddenly-working alarm (or break the alarm)

### Step 4 — Connection to the sound



- The wires weren't soldered good enough to make a sound. I applied a bit of fresh solder on the indicated places to make it work again

## Step 5 — Feeling safe



- This will definitely wake me up when there's someone opening my door!  
Fixed

To reassemble your device, follow these instructions in reverse order.