



Windows 8/8.1 Windows 10 Boot Manager Error Solution

Windows 8/8.1 Windows 10 - Windows Boot Manager Error Solution

Written By: ZFix



INTRODUCTION

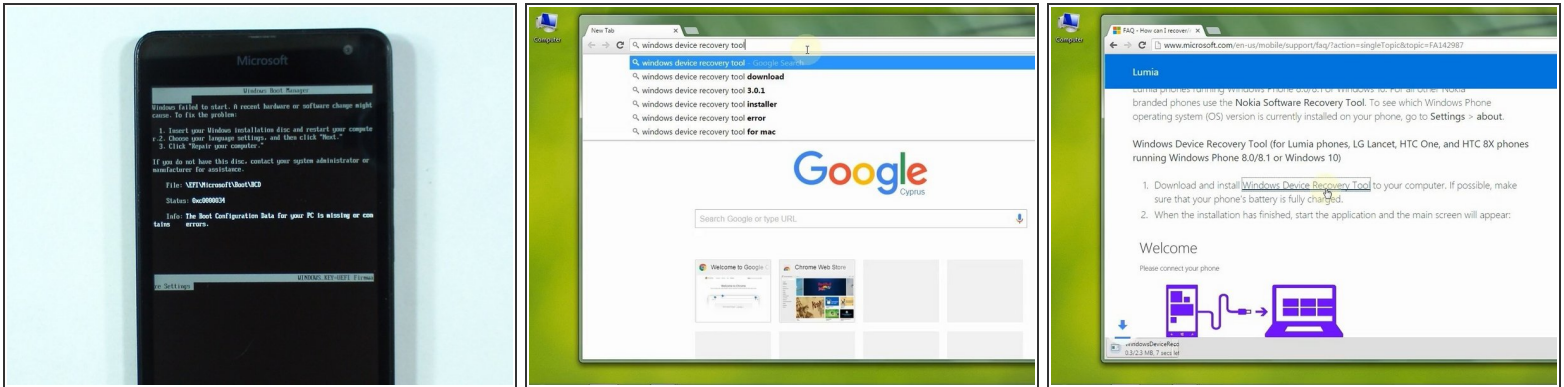
If your phone failed to start, hangs or has other problems with the operating system you can recover / reset / restore it with Windows Device Recovery Tool.

The procedure will erase all content stored on your phone, including apps and games (along with app data and game progress), text messages, call history, music, photos and more!

Make sure your laptop is connected to an AC adapter and the battery is charged, otherwise you can damage your phone!

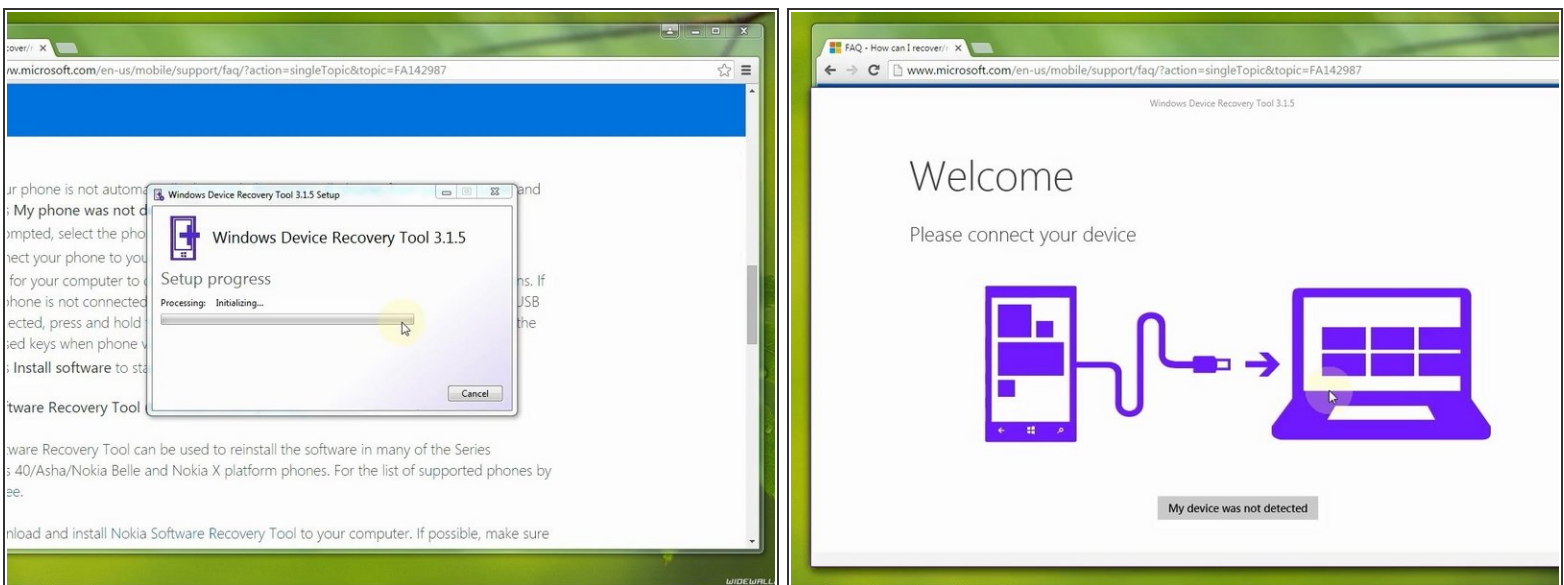
[video: https://www.youtube.com/watch?v=3aX1DqP_Ehs]

Step 1 — Windows 8/8.1 Windows 10 Boot Manager Error Solution



- This is Microsoft Lumia with Windows Boot Manager error - Windows failed to start.
- In the internet find and download the **Windows Device Recovery Tool**.
- The tool for the HTC One, HTC 8X, LG Lancet phones and all Lumia phones running Windows Phone 8.0/8.1 or Windows 10.
- For all other Nokia branded phones use the **Nokia Software Recovery Tool**.
- [Windows Phone Recovery Tool Page](#)

Step 2



- Install and lunch the application.

This document was generated on 2019-09-21 10:45:59 AM (MST).

Step 3



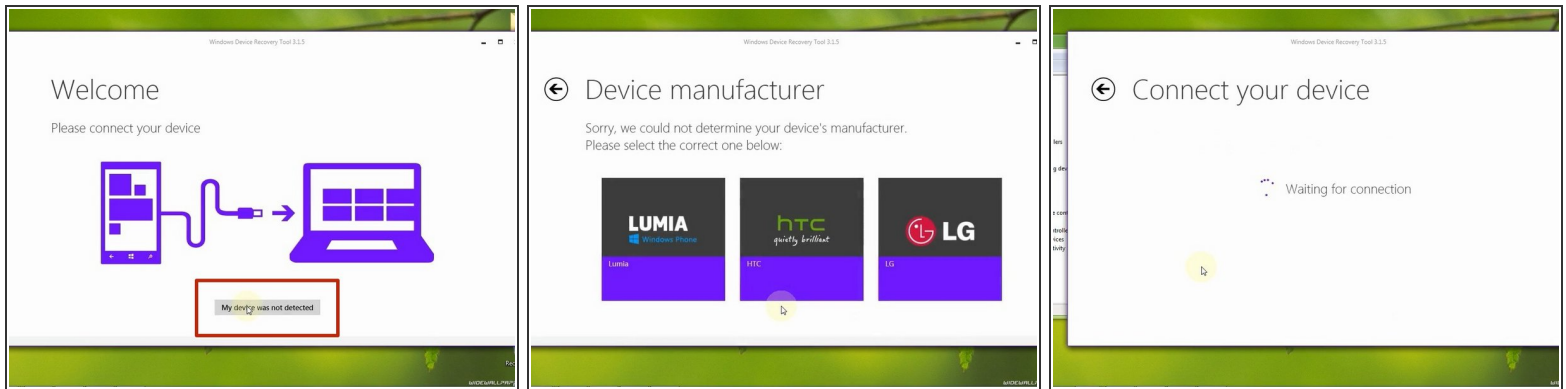
- Connect your device.
- If there is no reaction from Windows for a connected new device, restart the phone.
- Press and hold the Power and Volume down keys simultaneously until the phone vibrates.
- Wait for your computer to detect the phone and install the drivers.
- ⓘ The driver installation can take more time. Be patient and wait for the completion of the installation. The phone may restart during that time. This is normal.

Step 4



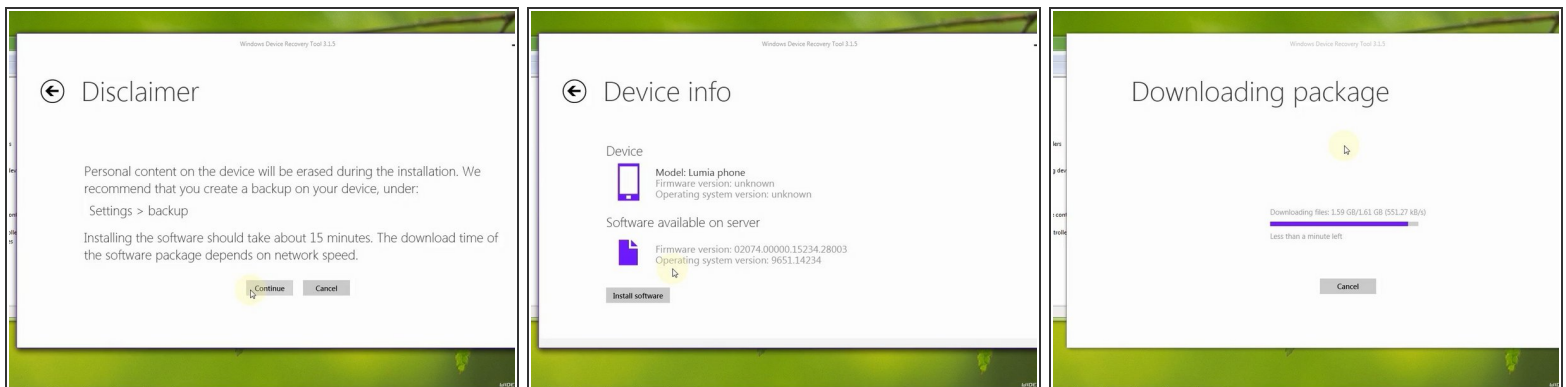
- The installation failed because the phone restarted during the installation.
- Restart the phone again.
- Now, in the device manager you will see "Lumia USB Connectivity". We are ready to start the recovery process.

Step 5



- Select "My device was not detected".
- Select the device manufacturer.
- If your phone is not automatically detected restart it again (Volume Down + Power).

Step 6



- ① Last warning - All data will be erased!
- Select "install software" to start the download.
- The file is more than 1GB, so be patient.

Step 7



The battery must be charged atleast 25%.



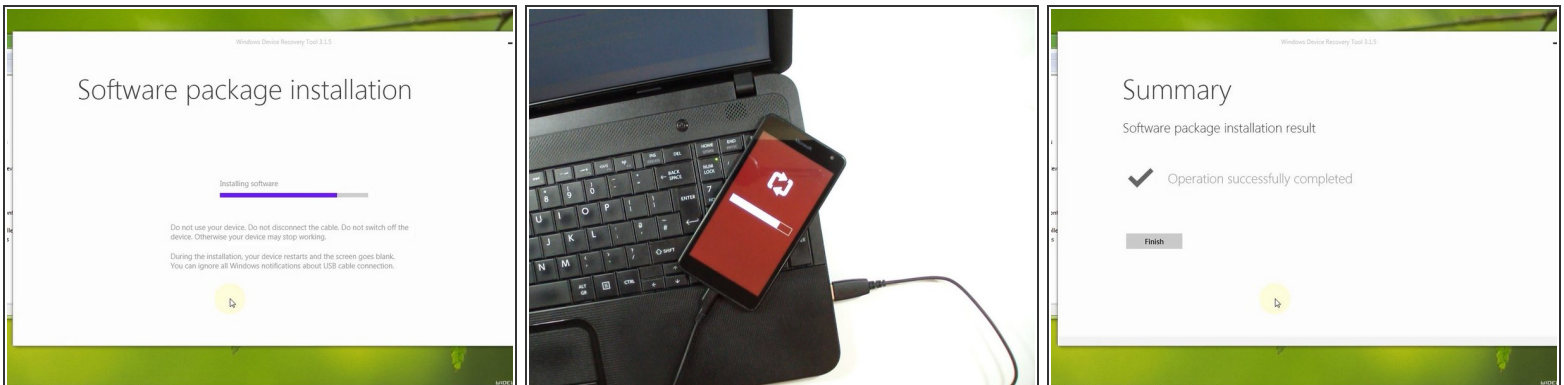
Make sure your laptop is connected to an AC adapter.

- The recovery tool will switch the device to flash mode and will start installing software.



From this moment on, don't disconnect the device, or you can kill it permanently.

Step 8



- The software package installation can take more time.
- When the flashing process is over disconnect the phone.

Step 9



- That's all.

To reassemble your device, follow these instructions in reverse order.