



Winix C535 Air Cleaner with PlasmaWave Technology HEPA Filter Replacement

Replace a HEPA Filter in a Winix C535 Air Cleaner with PlasmaWave Technology.

Written By: Tyana Ackerman



INTRODUCTION

Failure to replace HEPA Filters in air purifiers can cause dirty and moldy filters. This can result in harmful health effects including chronic illness, allergies, rashes, or other skin issues. This can also cause existing conditions to worsen. In order to maintain health benefits and purified air, it is important to keep up on regular HEPA Filter replacements. Fortunately, a HEPA Filter replacement in the Winix C535 Air Cleaner with PlasmaWave Technology is a simple process. The process consists of removing the cover and screen, vacuuming, and replacing two filters.



TOOLS:

- Vacuum Cleaner (1)



PARTS:

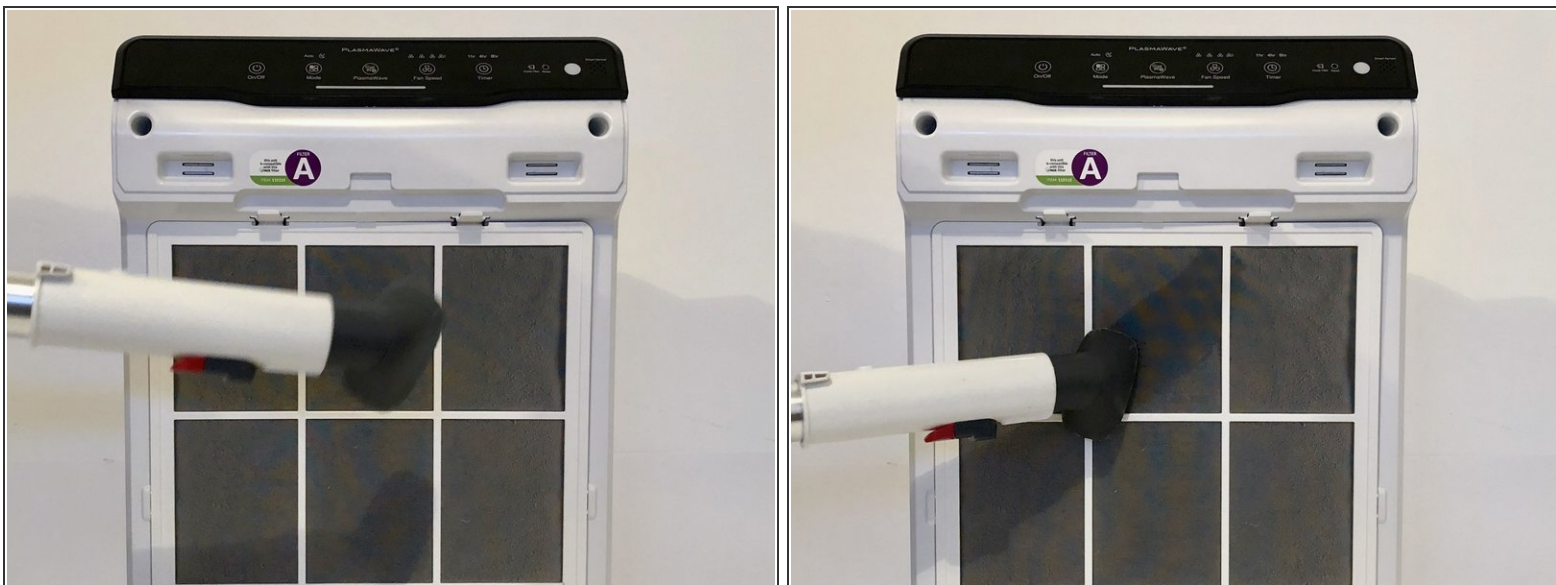
- True HEPA Filter (1)
- Activated Carbon Pre-Filter (1)

Step 1 — HEPA Filter



- Remove the air intake cover by placing your hands at the top of the air intake cover and gently pulling away from the device.
- ⓘ You can choose to unplug or leave the device plugged in. Either way, it will not affect the process.

Step 2



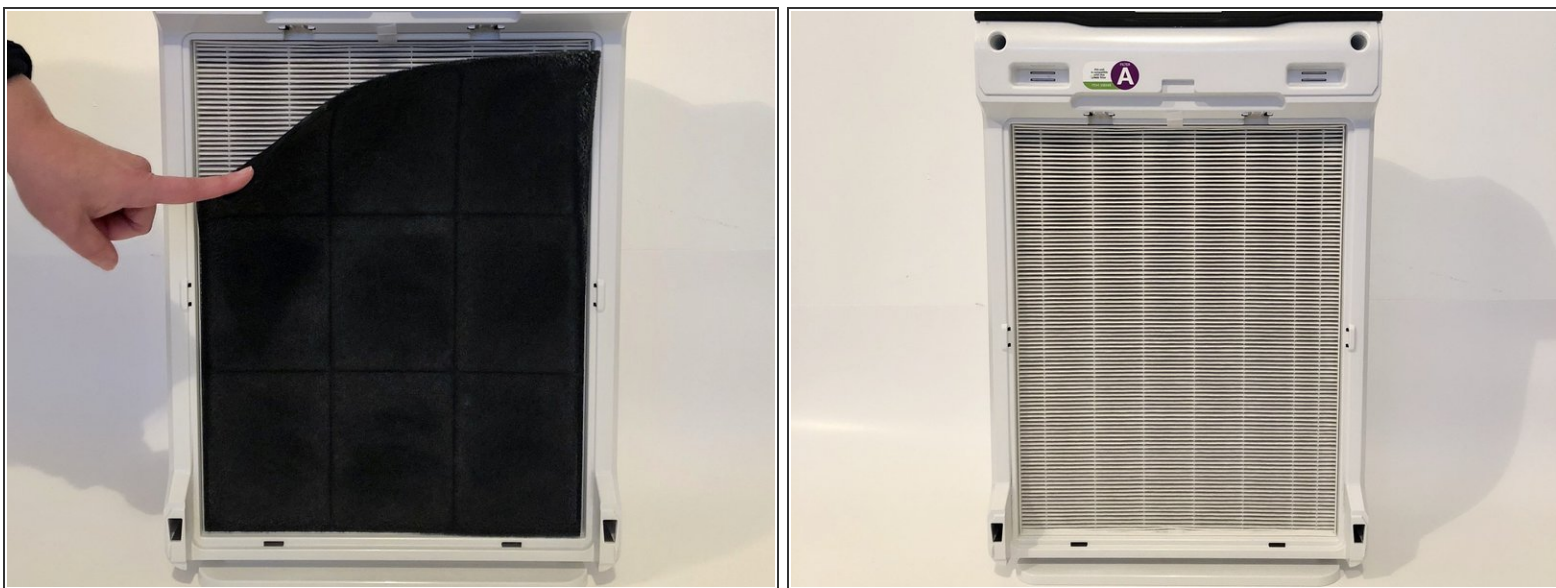
- Using your vacuum, clean the air intake screen.
- ⓘ Any vacuum and any attachment that has a brush will work for cleaning the air intake screen.

Step 3



- Detach the air intake screen by placing your fingers on the top two hinges.
- Gently press the two hinges down and pull away from the device.
- Using your vacuum, clean the other side of the air intake screen.

Step 4



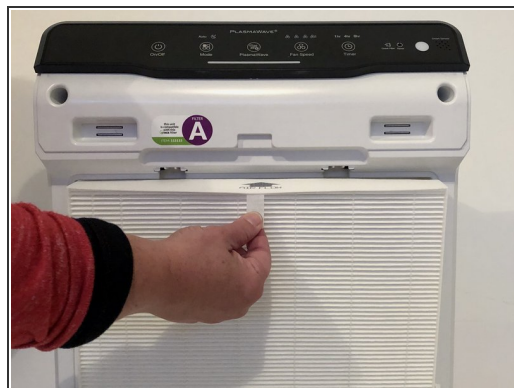
- Remove the Activated Carbon Pre-Filter by pulling it away from the device.
- ⓘ Throw away the Activated Carbon Pre-Filter into a garbage can.

Step 5



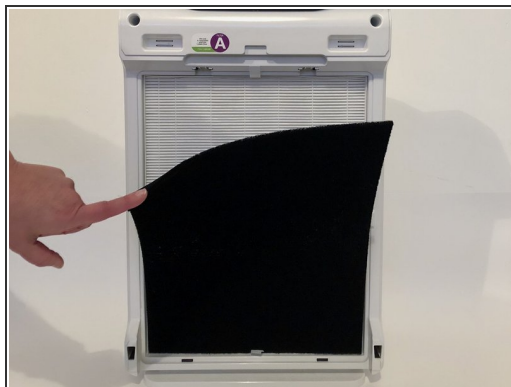
- Remove the True HEPA Filter by pulling it away from the device.
- ⓘ Throw away the True HEPA Filter into a garbage can.

Step 6



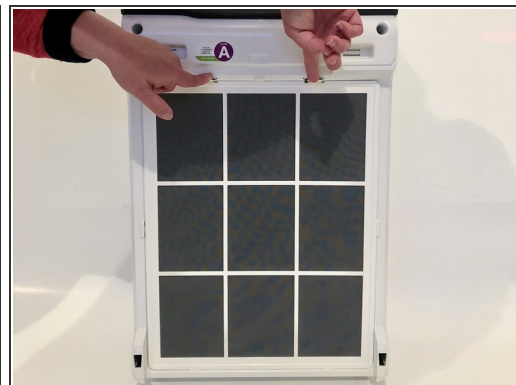
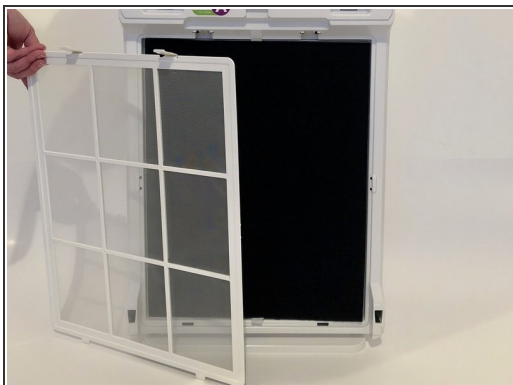
- Replace the True HEPA Filter by inserting it into the empty space in the device.
- ⓘ The arrow on the top of the True HEPA Filter should point towards the device and away from you.

Step 7



- Replace the Activated Carbon Pre-Filter by inserting it into the space in front of the True HEPA Filter.

Step 8



- Attach the air intake screen by placing the bottom two hinges in the bottom two holes of the device.
- Using your fingers, gently press down on the top two hinges while placing them in the top two holes of the device.

Step 9



- Attach the air intake cover by gently pressing the top of the cover against the device.

You have now replaced the HEPA Filter to continue purifying the air.