



Wintec Filemate Clear 7" Backplate Removal

Prerequisite Only

Written By: Nicholas Ferraro



INTRODUCTION

Prerequisite Only



TOOLS:

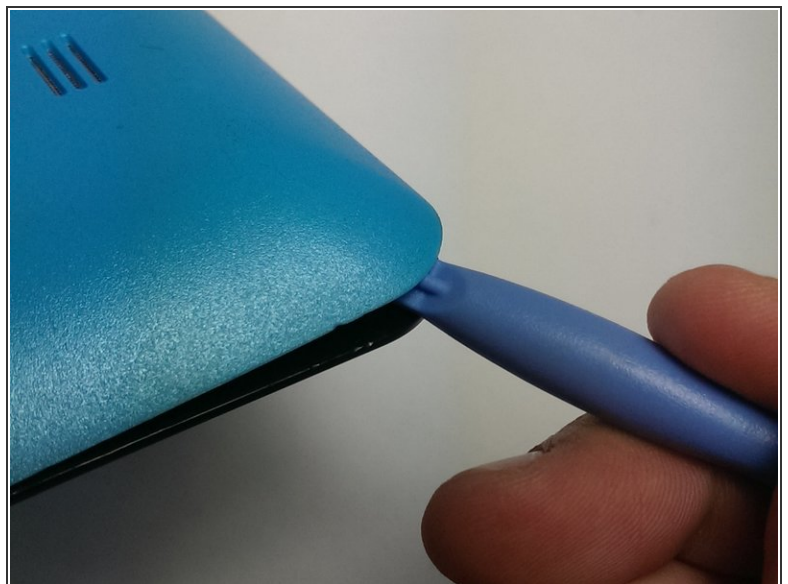
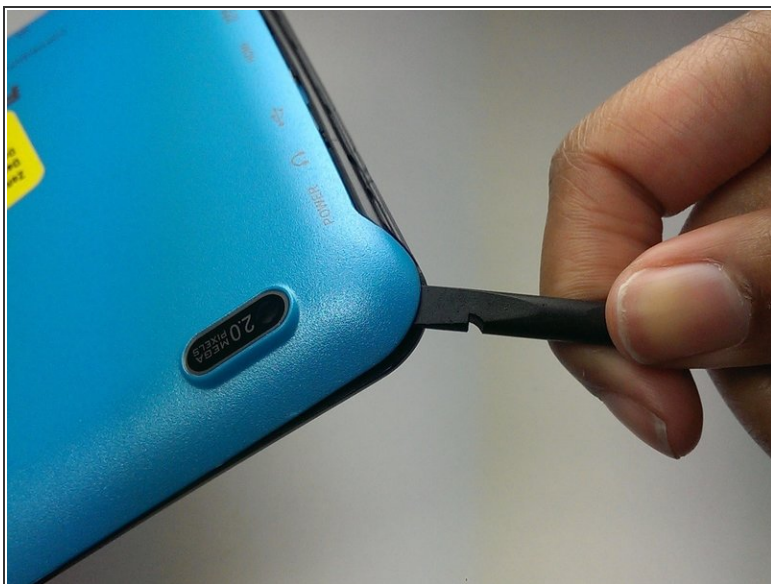
- [Spudger](#) (1)
 - [iFixit Opening Tools](#) (1)
-

Step 1 — Remove the Backplate



- Locate the four corners of the backplate.

Step 2



- Pry off the backplate by inserting a spudger or plastic opening tool into each corner and popping them open.

To reassemble your device, align the backplate so it is square with the rest of the device. Then press firmly on each corner until they snap into place.