



# Wolf Gourmet WGTR102S Slide Assist Plunger Replacement

Details how to replace the slide assist plunger for the Wolf Gourmet WGTR102S Toaster.

Written By: Ryan Funchess



## INTRODUCTION

If your toast rack does not slide up all the way, or your toast pops up too fast, try replacing the slide assist plunger with this guide.

---

### TOOLS:

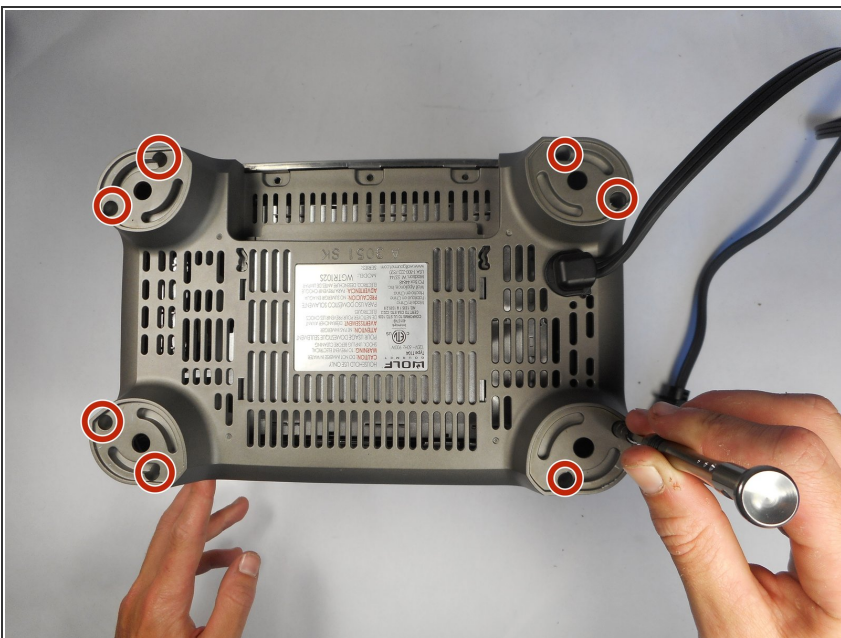
- [Y1 Tri-point Screwdriver](#) (1)
  - [Metal Spudger Set](#) (1)
  - [Large Needle Nose Pliers](#) (1)
-

## Step 1 — Outer Shell



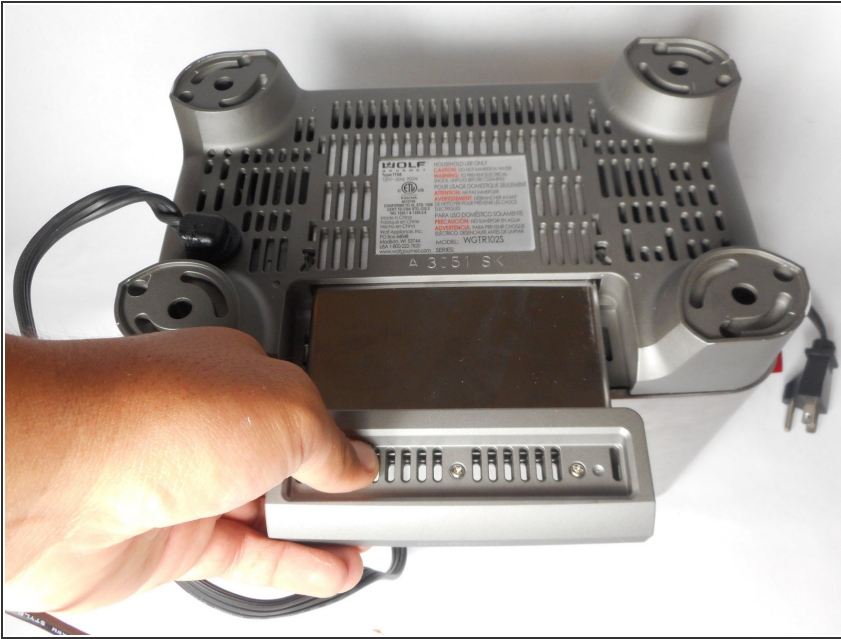
- Using a wedge, pry off the rubber pieces on the bottom of each foot of the toaster.

## Step 2



- Remove the eight 8mm screws on each toaster foot using a Tri-point Y1 screwdriver.

### Step 3



- Remove the crumb collector located on the bottom of the toaster.

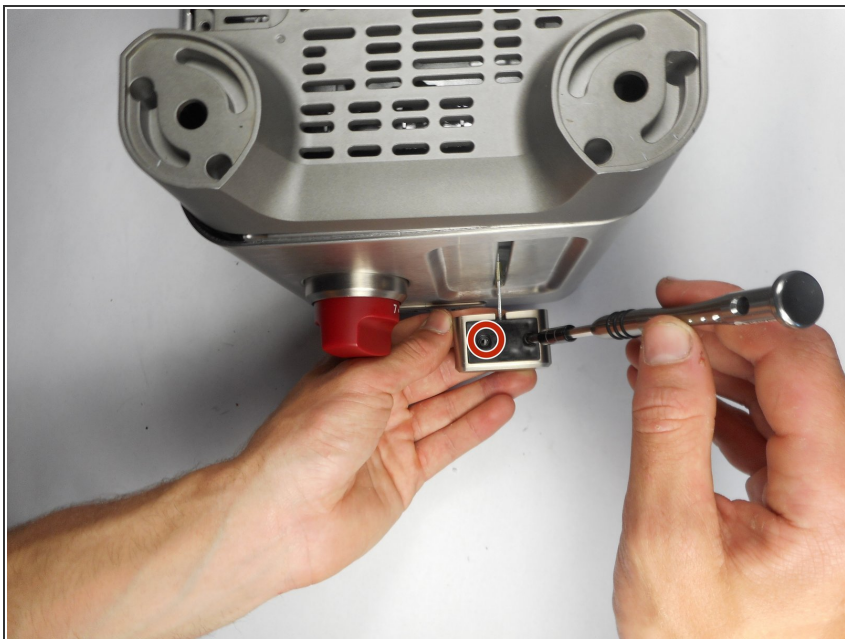
### Step 4



- Remove the three 8mm screws using the Tri-point Y1 screwdriver.



## Step 5



- Remove the two 8mm screws on the bottom of the slide lever using a Tri-point Y1 screwdriver.
- Once the screws are removed, detach the black plastic cover on the bottom of the slide lever.

## Step 6




- Remove the final 8mm screw in the slide lever.
- The lever can now pull away from the entire unit.

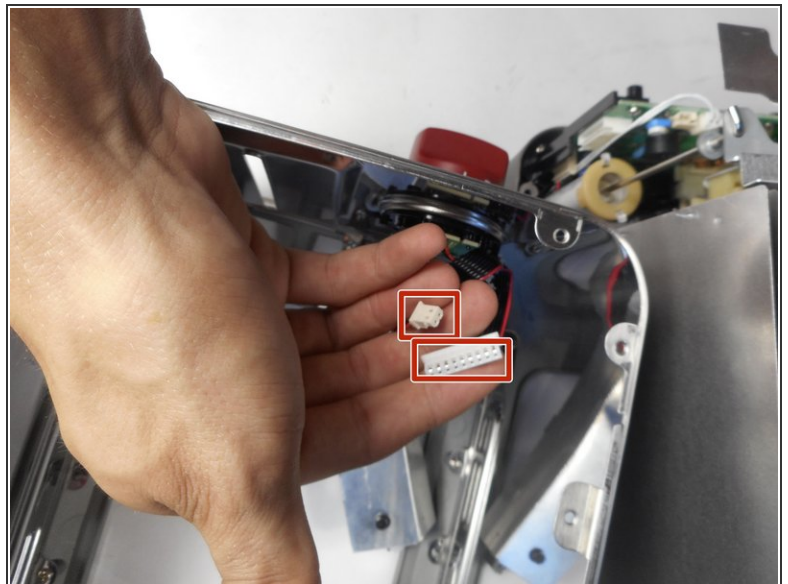
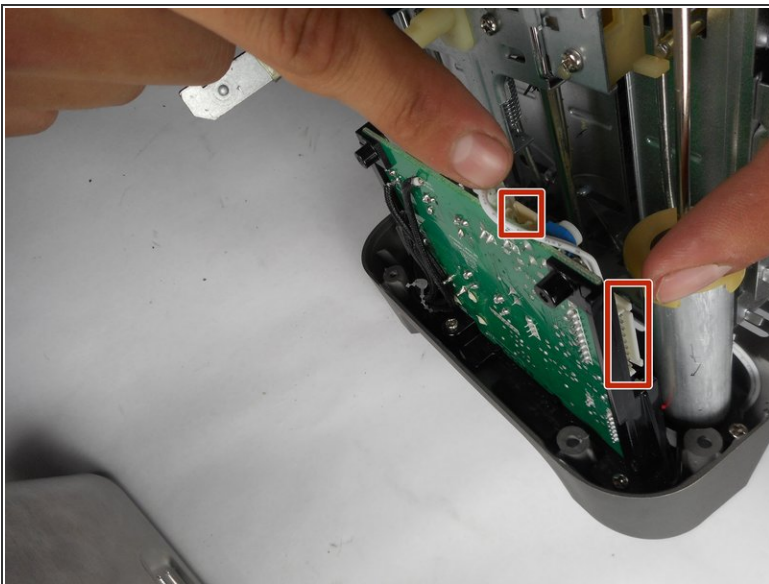
## Step 7



- Remove toaster's outer shell by lifting straight up.

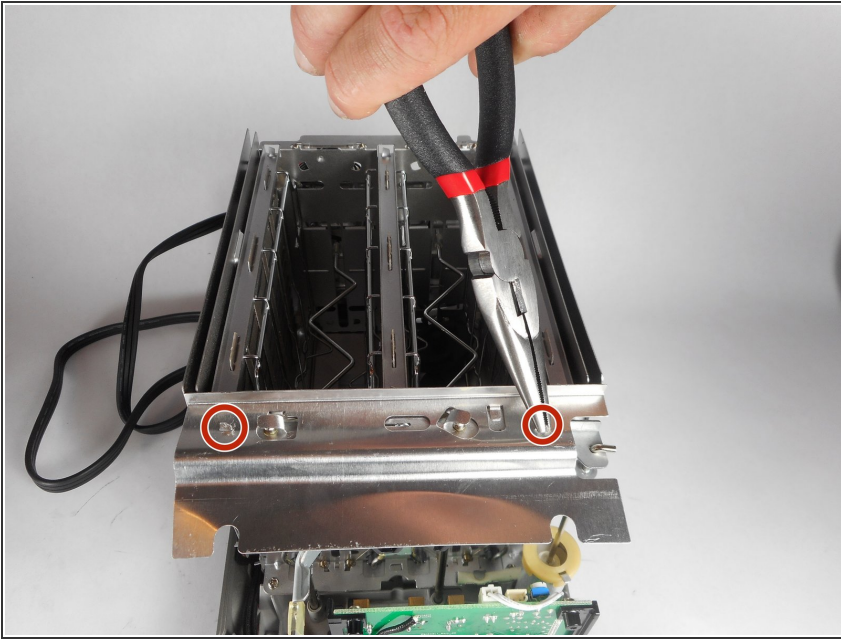
 Slowly remove the outer shell. Disconnect ground wire before fully separating the shell and inner components.

## Step 8



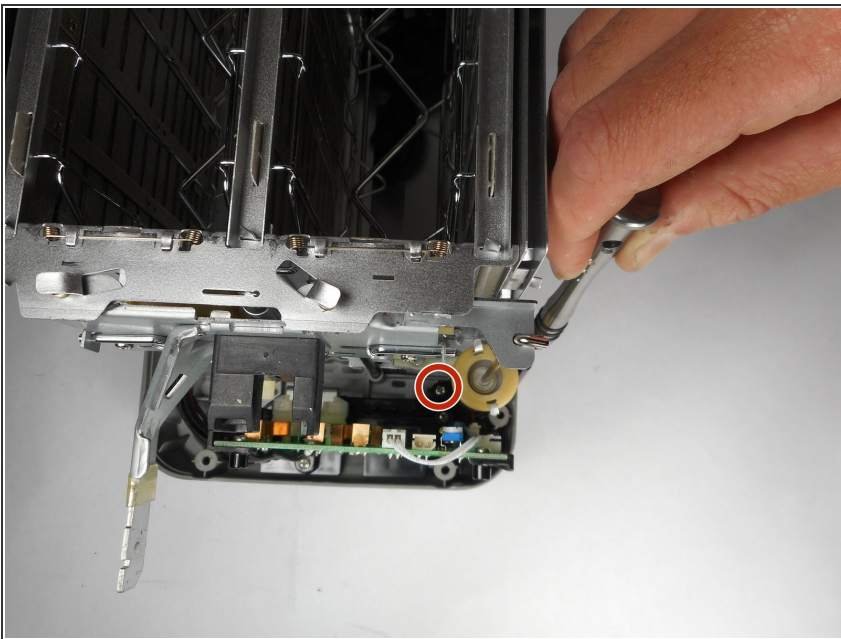
- Disconnect the wire cluster that connects the lights and circuit board by pulling apart the two plastic connectors.
- Remove the outer shell from the device.

## Step 9 — Slide Assist Plunger



- Remove the top panel by bending the tabs on each side straight up.

## Step 10



- Remove the two 8mm screws on the bottom of the plunger using a Tri-point Y1 screwdriver.



## Step 11



- Remove the plunger from the device.

To reassemble your device, follow these instructions in reverse order.