



World Dryer Airforce J4-973A3 Motor Replacement

How to replace the motor in the World Dryer Airforce J4-973A3.

Written By: Eli Forbes



INTRODUCTION

Occasionally the dryer may become too loud as a result of a faulty motor. This guide details the steps taken to replace the motor. Disassembly of the device requires a special bit for removal of tamper-proof screws.



TOOLS:

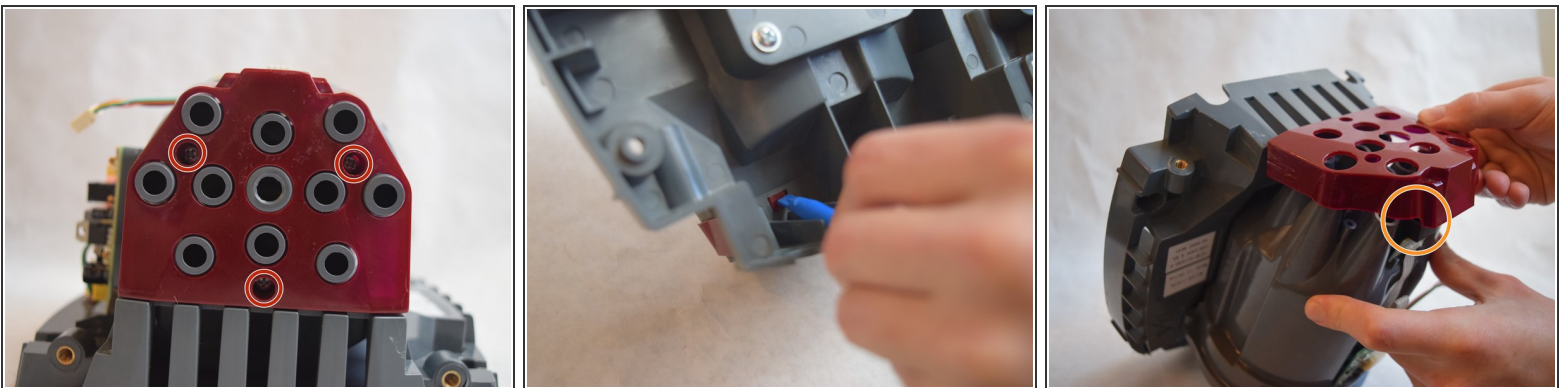
- [Phillips #1 Screwdriver](#) (1)
 - [Phillips #2 Screwdriver](#) (1)
 - [10mm Wrench](#) (1)
 - [Tamper Resistant TORX Plus TR Bit](#) (1)
 - [iFixit Opening Tools](#) (1)
-

Step 1 — Motor



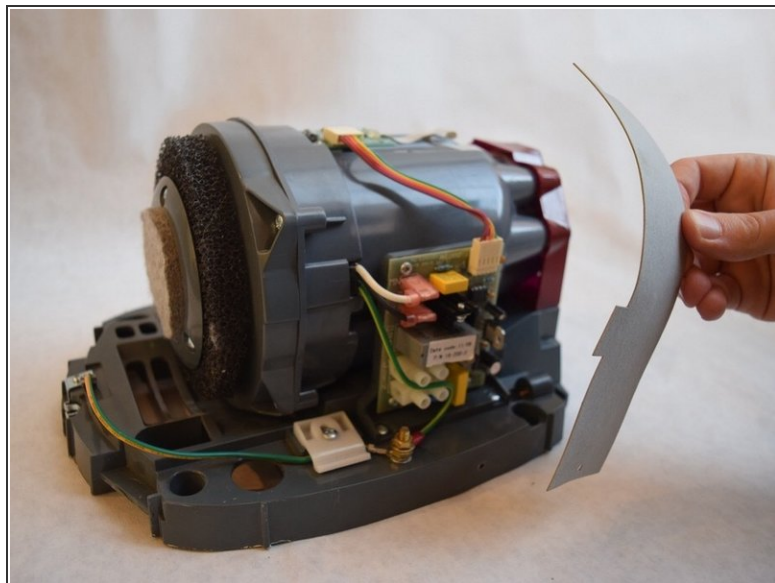
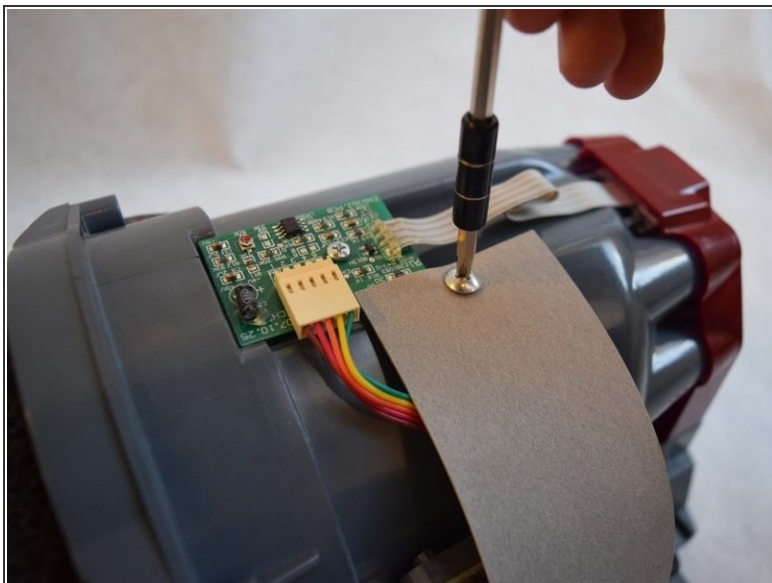
- To change the motor, start by removing the metal casing.
 - Using the special bit, remove the large screws at the bottom of the casing.
 - To remove the case, lift the indicated spot with your hands.
- i** The direction for turning the screws is different than what was indicated on the small sticker above the hole.

Step 2



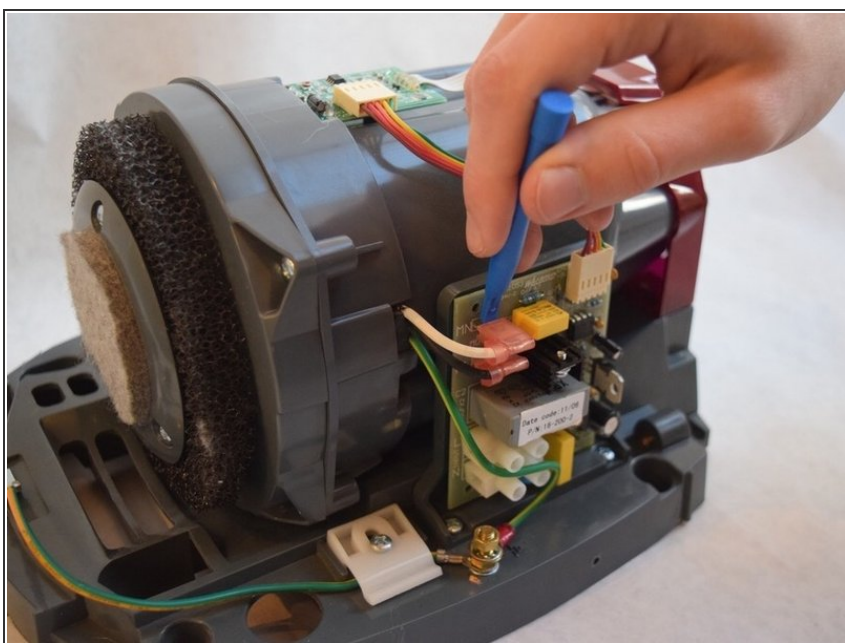
- Remove the three 1/2" Ph1 screws at the bottom of the red fan cap.
- Turn over the device.
- Push the red tabs on the back of the unit with medium to heavy pressure, using a small prier.
- Carefully remove the cap, to prevent damage to the sensor.

Step 3



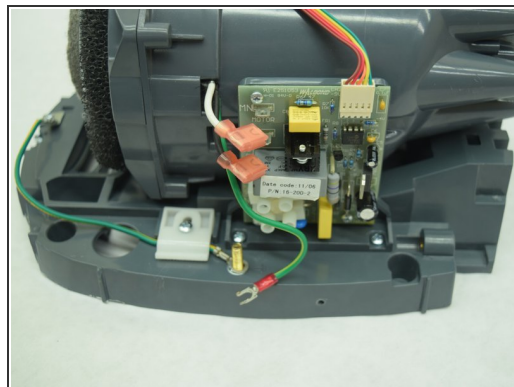
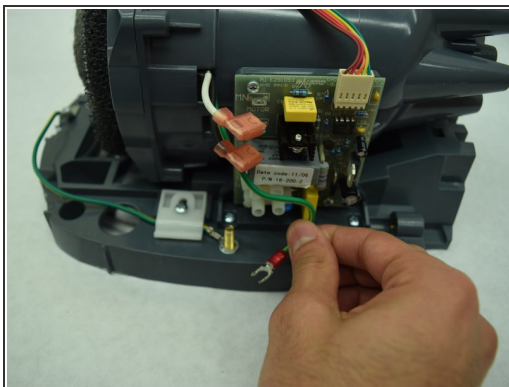
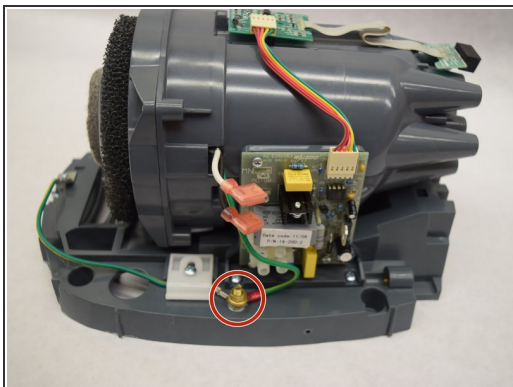
- Remove both 3/8" Ph2 screws attached to the grey belt at the top and bottom.
- Lift the grey belt away. This gives access to the server board.

Step 4



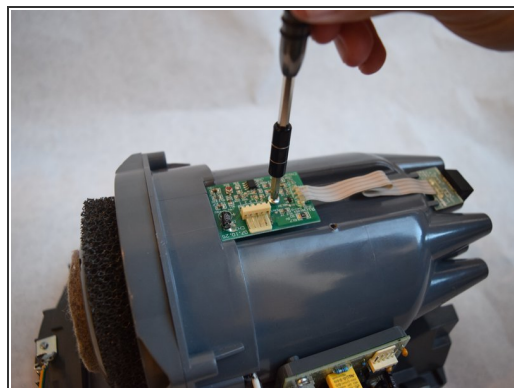
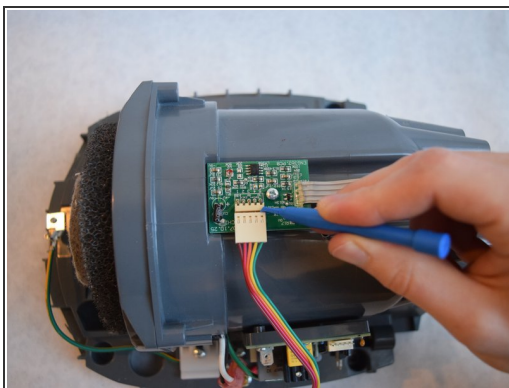
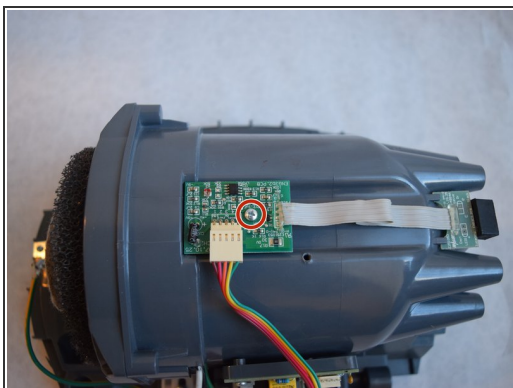
- Use a plastic opening tool to remove the two pink capped wires in the upper left corner of the server board.

Step 5



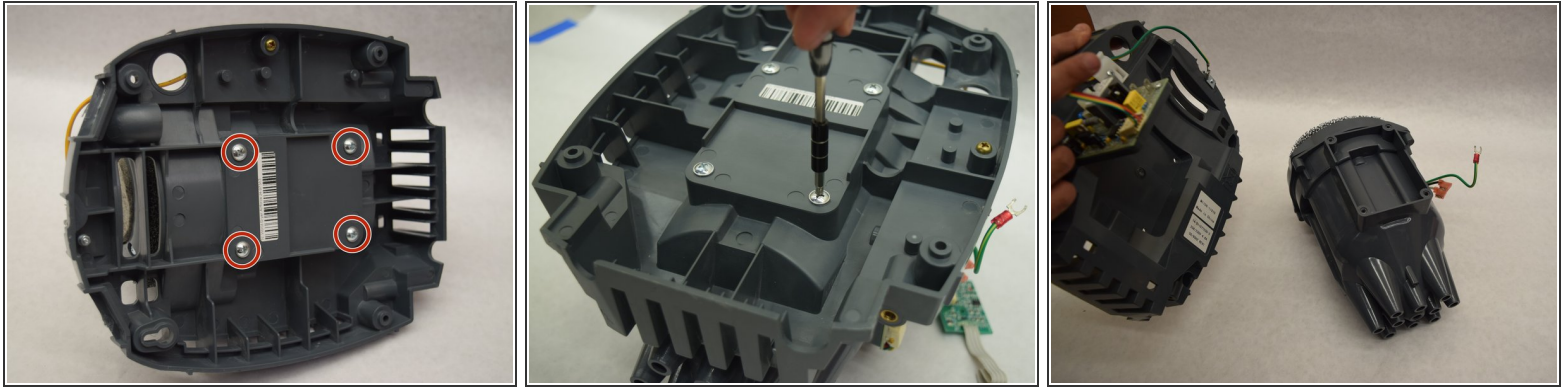
- Remove the brass nut from its bolt using a 10mm wrench.
- Once the nut is free, disconnect the green wire.

Step 6



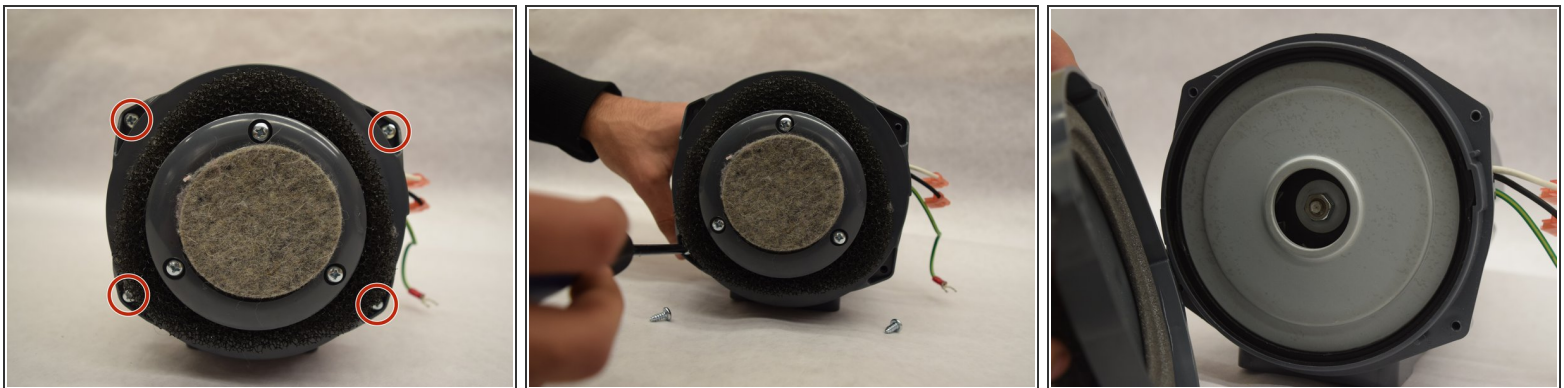
- Remove the rainbow ribbon cable using a plastic opening tool.
- Remove the 1/2" Ph1 screw from the center of the circuit board.

Step 7



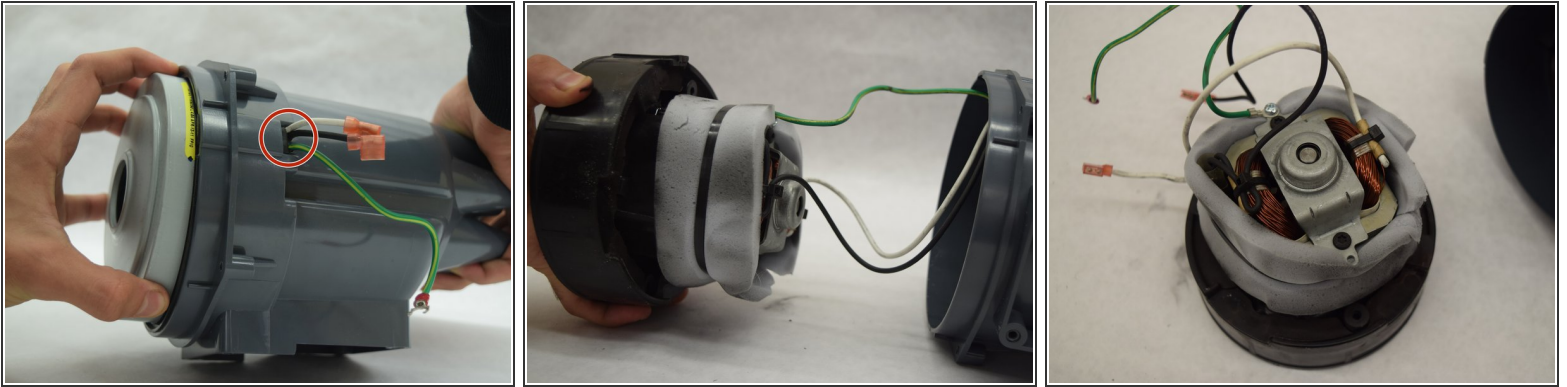
- Remove the four 3/4" Ph2 screws from the back of the device body.
- Separate the motor housing from the device body.
- ⓘ Ensure that all wires connecting the motor housing and motherboard are disconnected before removing the component.

Step 8



- Remove the four 1/2" Ph2 screws from the filter.
- Pull the filter plate away to reveal the motor.

Step 9



- Pull the motor out of the housing.
- Be sure to feed the wires through the slot as you pull the motor out.

To reassemble your device, follow these instructions in reverse order.