



# WowWee CHiP Robot Dog Smart Watch Battery Replacement

Replacing the battery inside of the WowWee CHiP Robot Dog Smart Watch.

Written By: Joseph Dantes





## TOOLS:

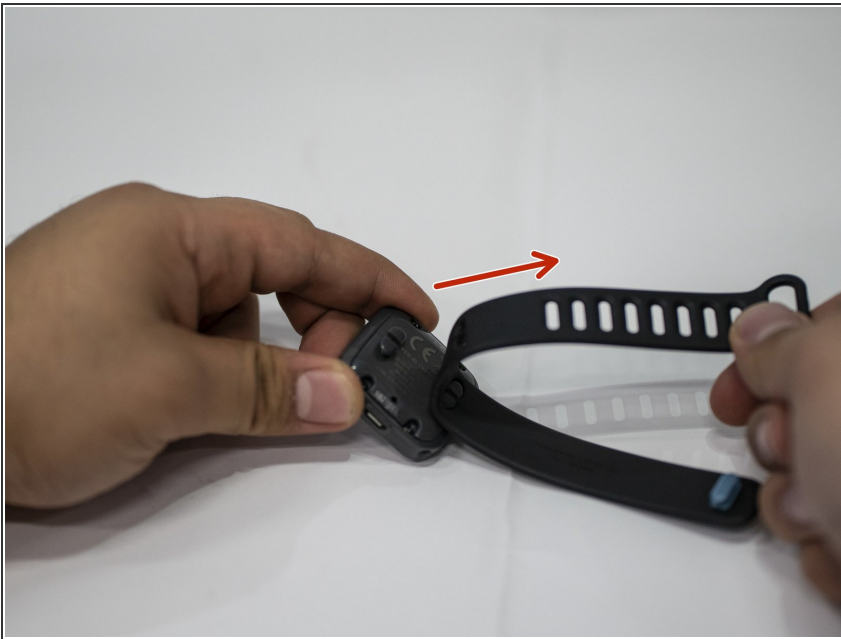
- [Phillips #0 Screwdriver](#) (1)
-

## Step 1 — Smart Watch Battery



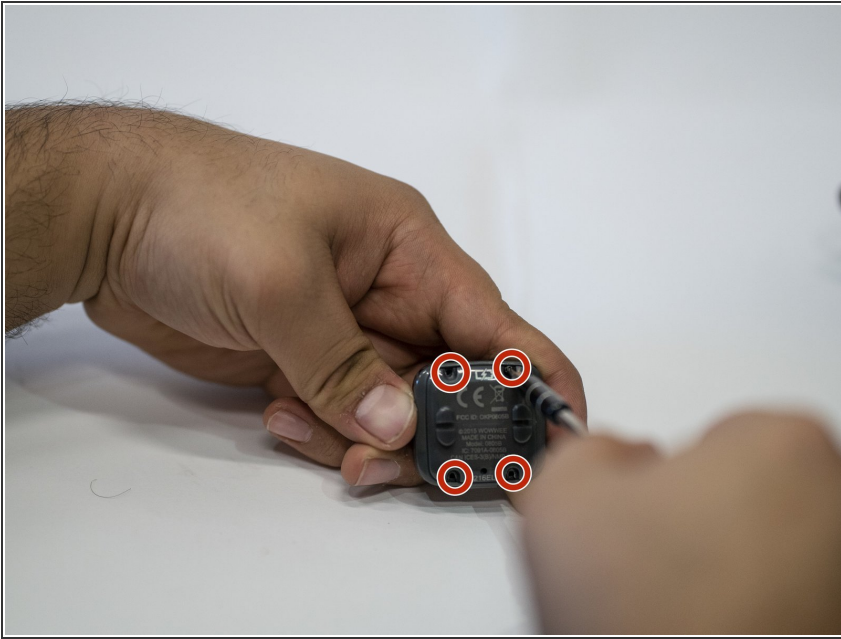
- Place the Smart Watch on its back or side so that the full watch band is visible.

## Step 2



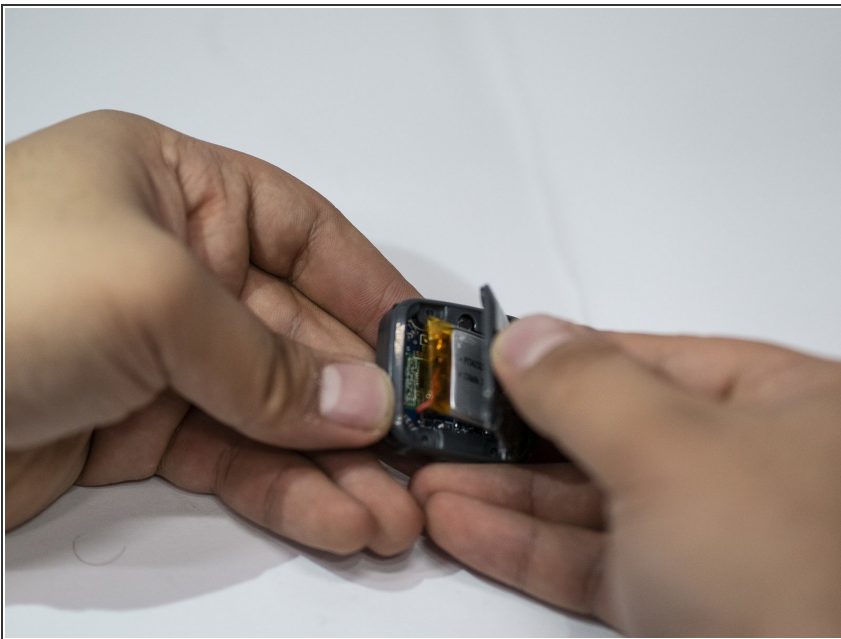
- Remove the wrist strap by gently pulling the band off of the plastic pegs on the back of the watch.

### Step 3



- Remove the four screws in the back of the watch using a Phillips #0 screwdriver.

### Step 4



- Gently pull off the back side of the watch component.

## Step 5



- Pull the battery and motherboard component out.

To reassemble your device, follow these instructions in reverse order.