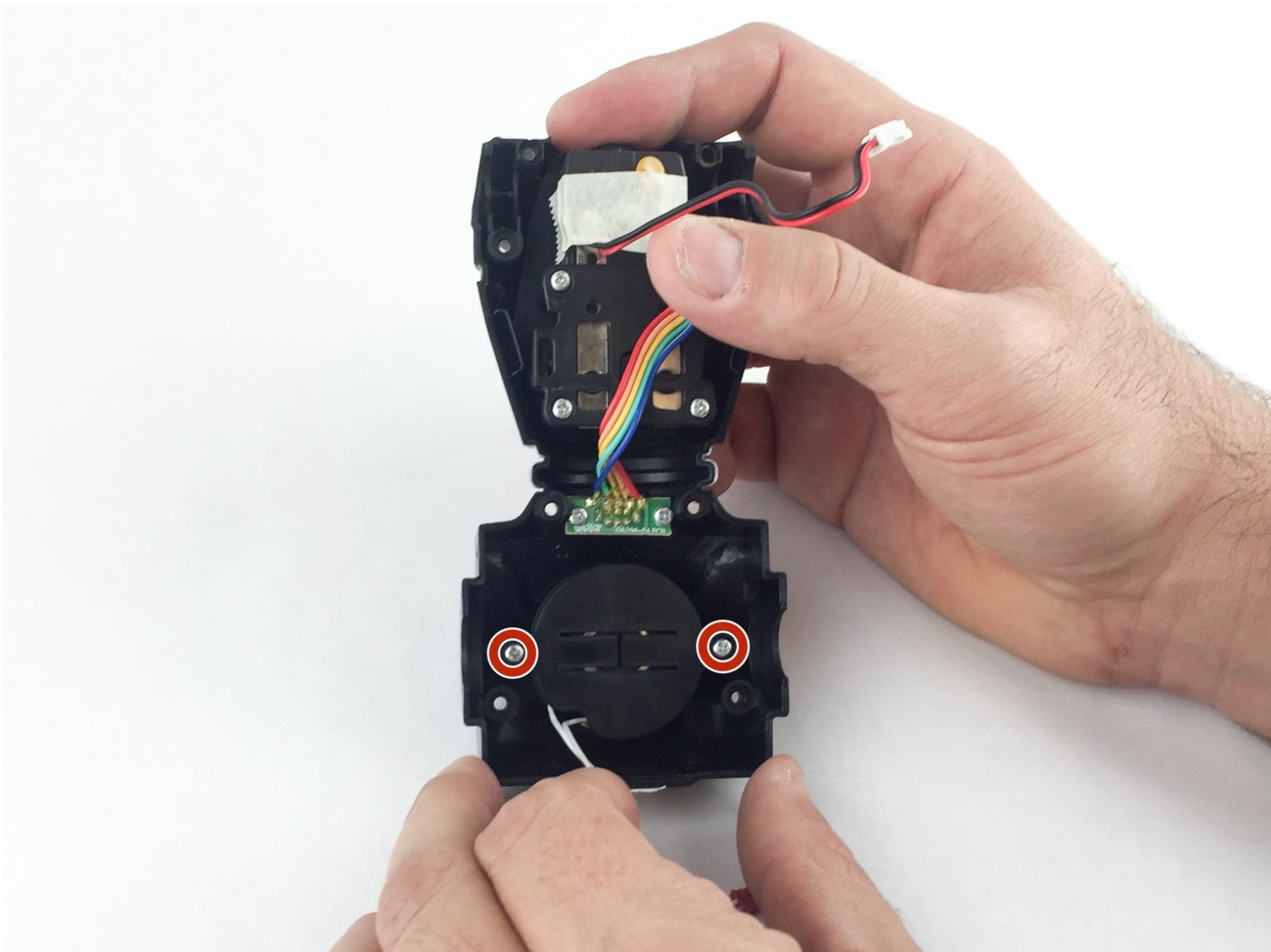




# WowWee MiP Robot Speaker Replacement

Replace the speaker in your WowWee MiP robot.

Written By: Daniel Burkholder



---

## INTRODUCTION

The MiP communicates with playful sounds. A malfunctioning speaker will greatly diminish the user experience. Use this guide to replace the speaker in your WowWee MiP robot.

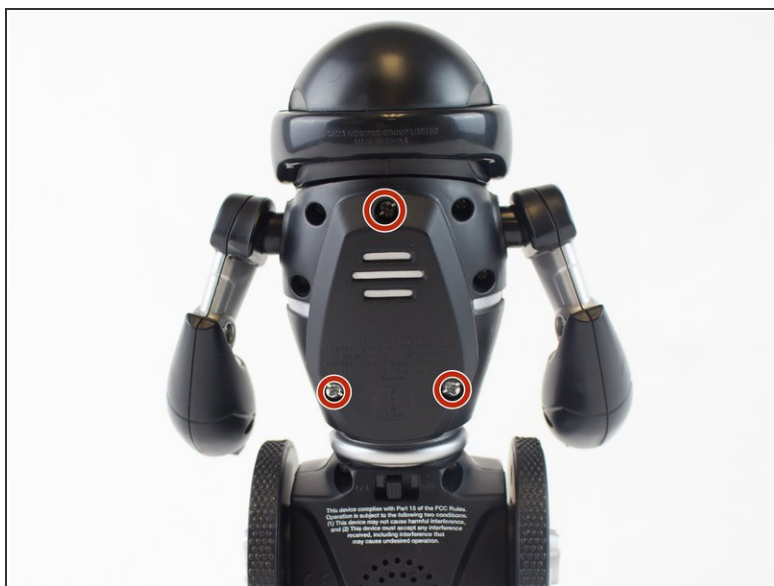
---



### TOOLS:

- [64 Bit Driver Kit](#) (1)
  - [Metal Spudger](#) (1)
  - [Phillips #1 Screwdriver](#) (1)
  - [Phillips #2 Screwdriver](#) (1)
  - [Tweezers](#) (1)
-

## Step 1 — Battery



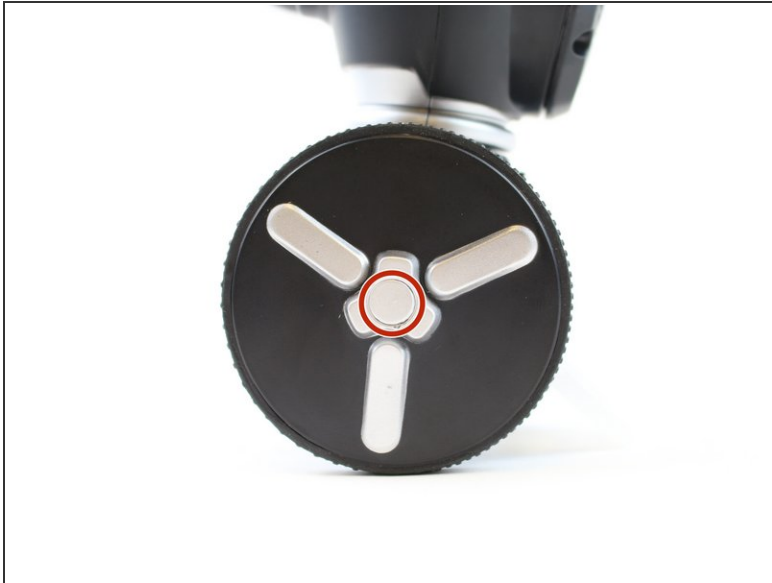
- Remove the three 12.0 mm Phillips # 2 screws from the battery cover.

## Step 2



- Carefully pull the battery pack from the robot.
- Remove the batteries from the battery pack.

### Step 3 — Wheel



- Use a metal spudger to carefully pry off the hubcap without marring the plastic wheel or hubcap.
- ⓘ This plastic material is not replaceable. Any damage will be noticeable.

### Step 4




- Remove the 12.0 mm Phillips #2 screw.
- ⓘ Hold the wheel in place, or it will rotate as you attempt to remove the screw.



## Step 5



- Pull the wheel off of the square axle.

 Do not use excessive force while removing the wheel. Pulling too hard on the wheel can damage the axle.

## Step 6 — WowWee MiP Robot Body Disassembly



- Remove the eight 9.3 mm Phillips #1 screws from the back of the robot.

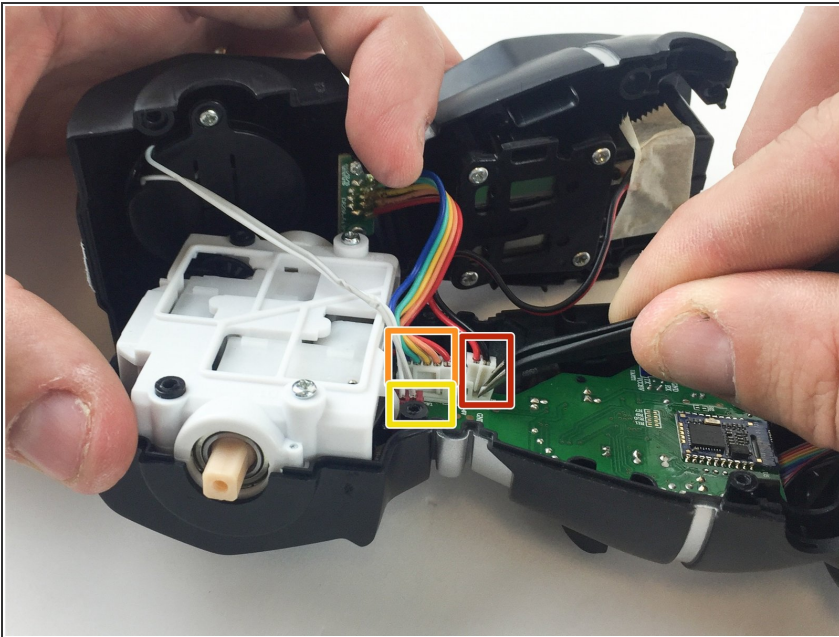
## Step 7



- Remove the arms from the body.
- Carefully open the body compartment.

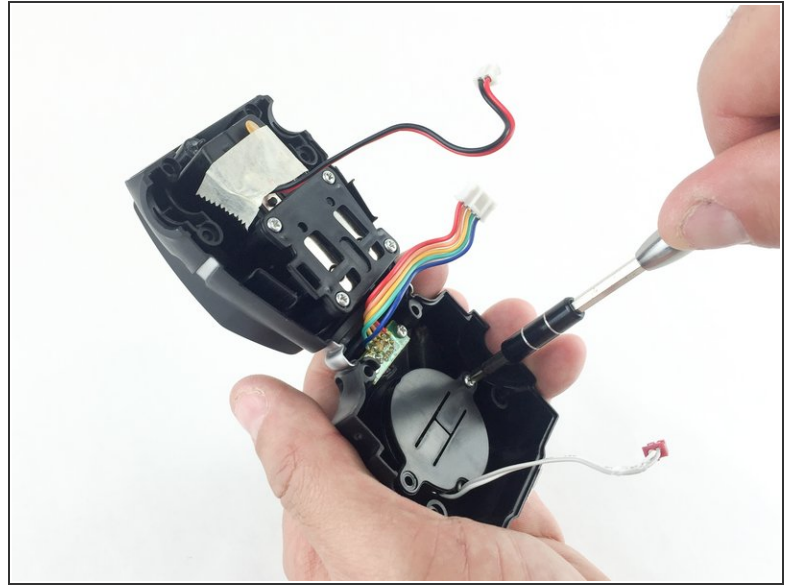
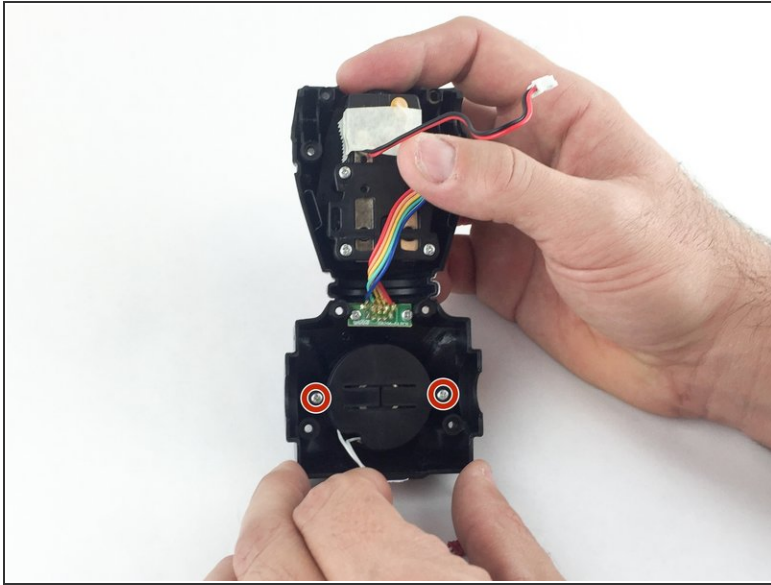
⚠ Open the compartment slowly. There are wires connecting the two body pieces together. If pulled too hard, the wires and/or the motherboard could be damaged.

## Step 8



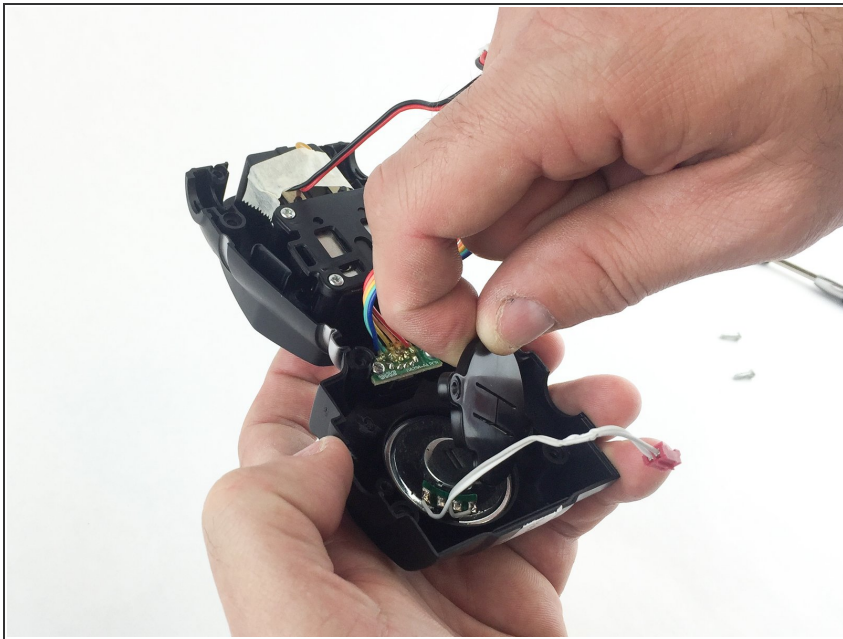
- Using precision tweezers, disconnect the following three bundles of wires:
- Connecting the battery pack to the motherboard.
- Connecting the power switch to the motherboard.
- Connecting the speaker to the motherboard.

## Step 9 — Speaker



- Remove the two 7.5 mm Phillips #1 screws holding the speaker bracket in place.

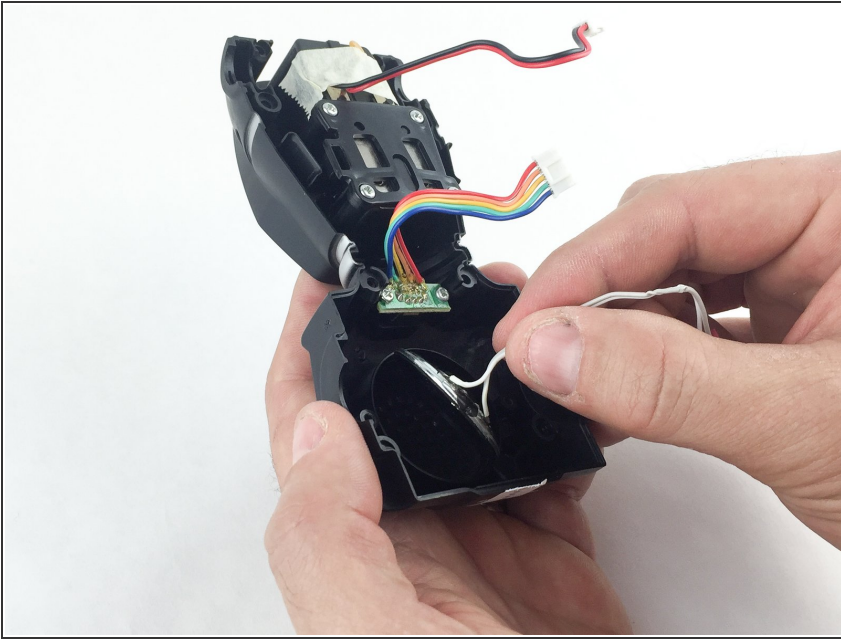
## Step 10



- Remove the plastic bracket covering the speaker.



## Step 11



- Gently remove the speaker from the MiP.
- ☑ During reassembly, be sure to place the speaker in the same position.

To reassemble your device, follow these instructions in reverse order.