



# WowWee MiP Robot LED Light Replacement

Replace the front LED light of your WowWee MiP robot.

Written By: Courtney



---

## INTRODUCTION

The LED light on the MiP indicates what mode the robot is in. If this light is malfunctioning, using the MiP is difficult.

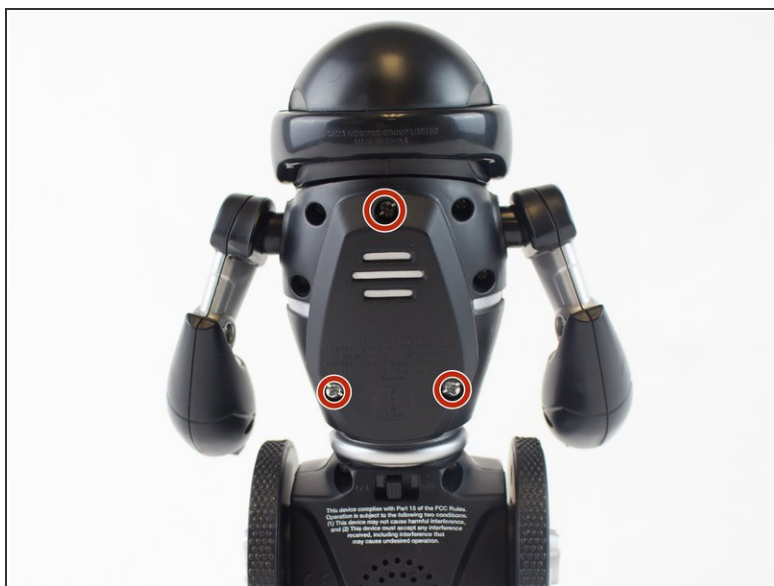
---



### TOOLS:

- [64 Bit Driver Kit](#) (1)
  - [Metal Spudger](#) (1)
  - [Phillips #1 Screwdriver](#) (1)
  - [Phillips #2 Screwdriver](#) (1)
  - [Tweezers](#) (1)
-

## Step 1 — Battery



- Remove the three 12.0 mm Phillips # 2 screws from the battery cover.

## Step 2



- Carefully pull the battery pack from the robot.
- Remove the batteries from the battery pack.

### Step 3 — Wheel



- Use a metal spudger to carefully pry off the hubcap without marring the plastic wheel or hubcap.

**i** This plastic material is not replaceable. Any damage will be noticeable.

### Step 4



- Remove the 12.0 mm Phillips #2 screw.


**i** Hold the wheel in place, or it will rotate as you attempt to remove the screw.



## Step 5



- Pull the wheel off of the square axle.

 Do not use excessive force while removing the wheel. Pulling too hard on the wheel can damage the axle.

## Step 6 — WowWee MiP Robot Body Disassembly



- Remove the eight 9.3 mm Phillips #1 screws from the back of the robot.

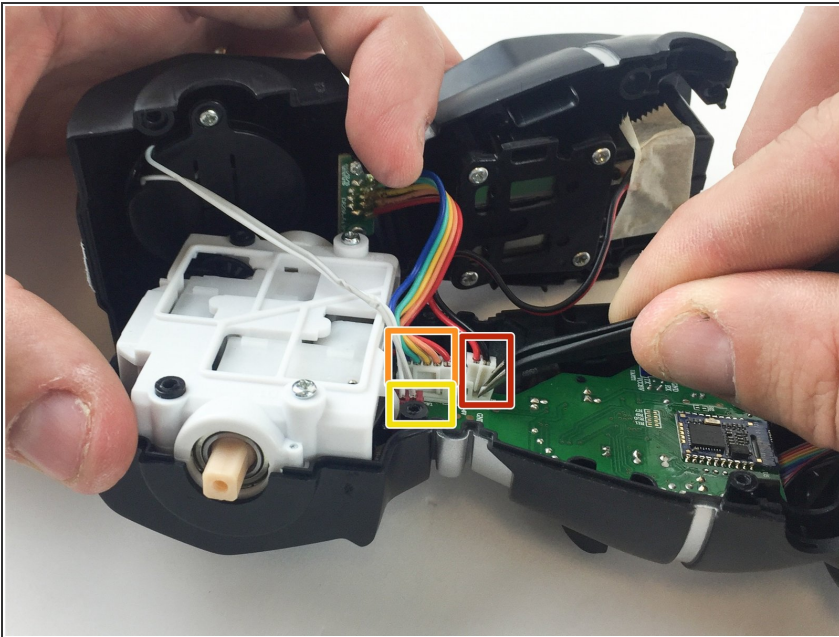
## Step 7



- Remove the arms from the body.
- Carefully open the body compartment.

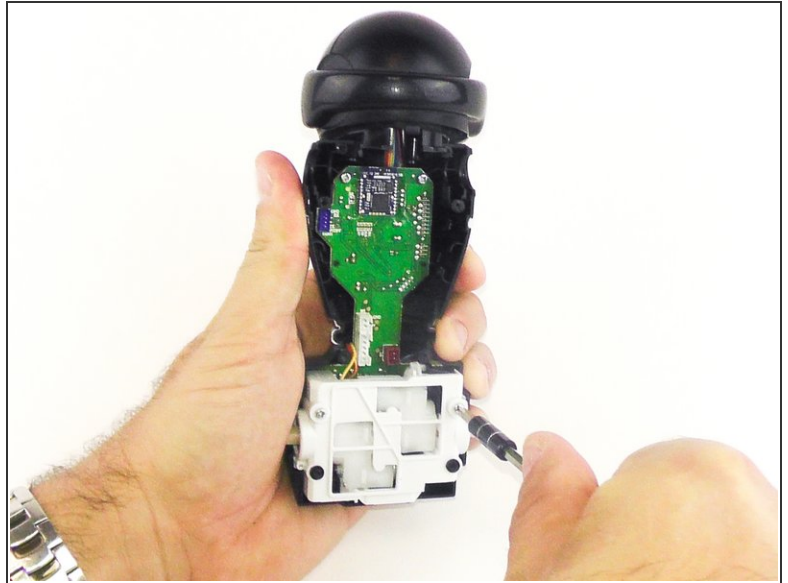
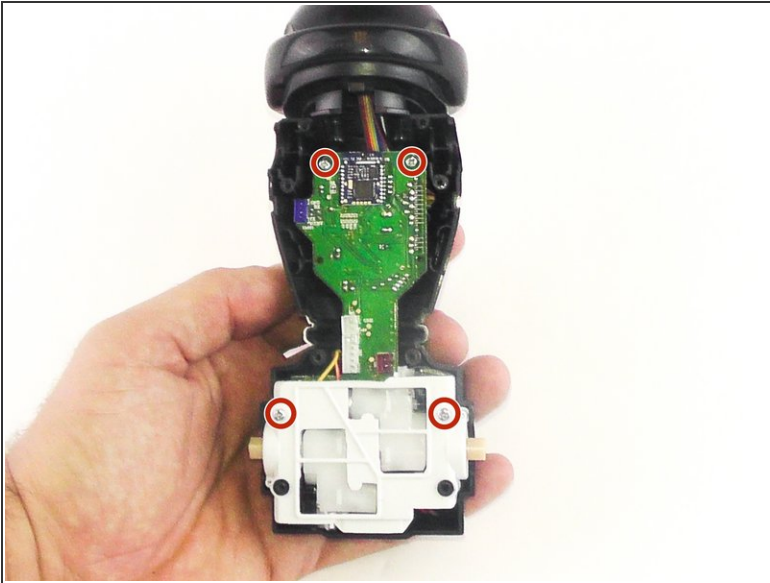
⚠ Open the compartment slowly. There are wires connecting the two body pieces together. If pulled too hard, the wires and/or the motherboard could be damaged.

## Step 8



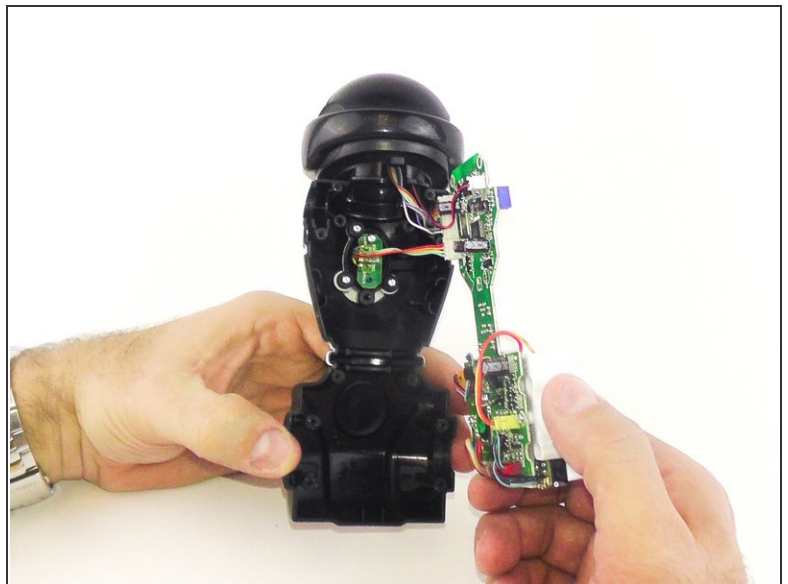
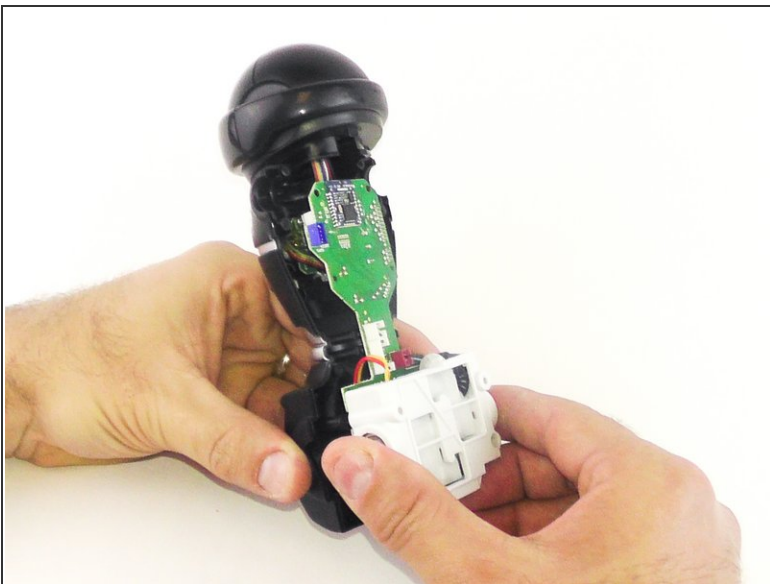
- Using precision tweezers, disconnect the following three bundles of wires:
- Connecting the battery pack to the motherboard.
- Connecting the power switch to the motherboard.
- Connecting the speaker to the motherboard.

## Step 9 — LED Light




- Remove the four 7.5mm Phillips #1 screws.

## Step 10

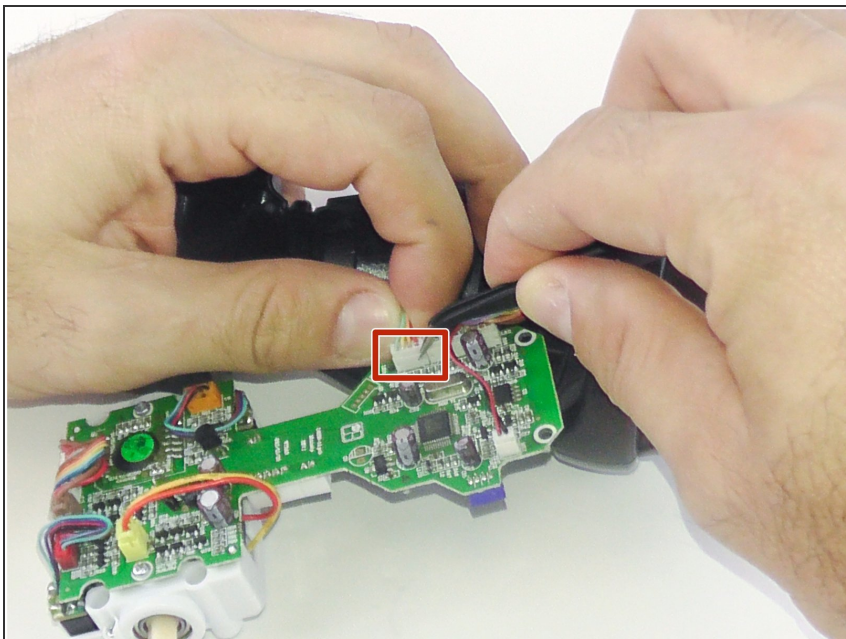


- Carefully pull the motor and motherboard assembly straight out from the base.

 Be careful not to break the plastic rods that go through the motor assembly and are connect to the shell.

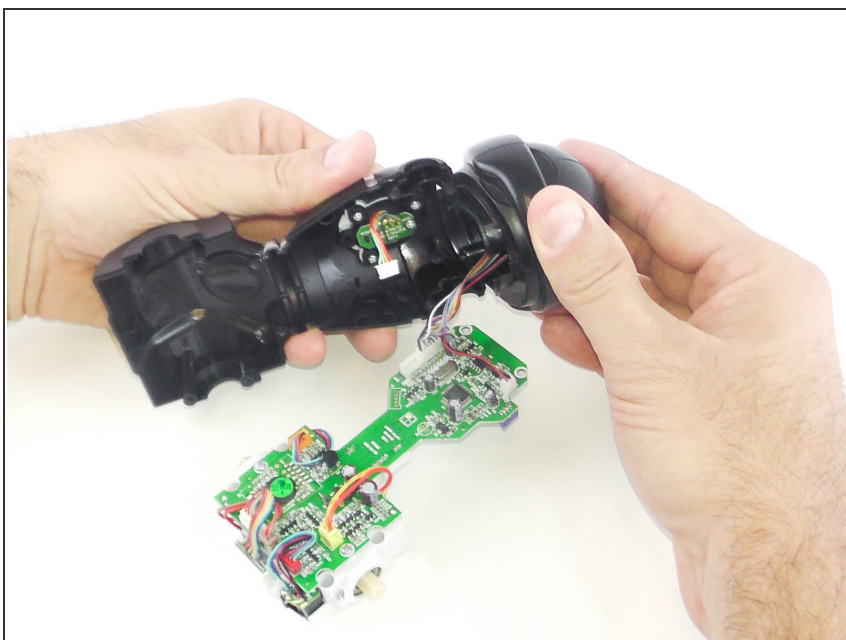


## Step 11



- Use the precision tweezers to unplug the bundle of wires.

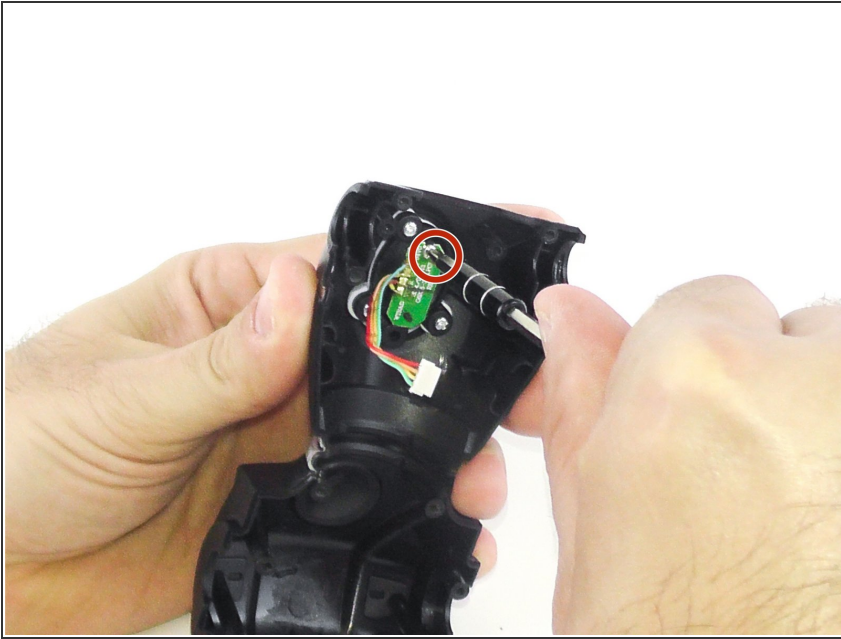
## Step 12



- Slide the head back to separate it from the body.
- ⓘ The motherboard does not need to be separated from the head to replace the LED light.



## Step 13



- Remove the 7.5mm Phillips #1 screw.
- ⓘ The LED light is soldered to the small circuit board.

To reassemble your device, follow these instructions in reverse order.