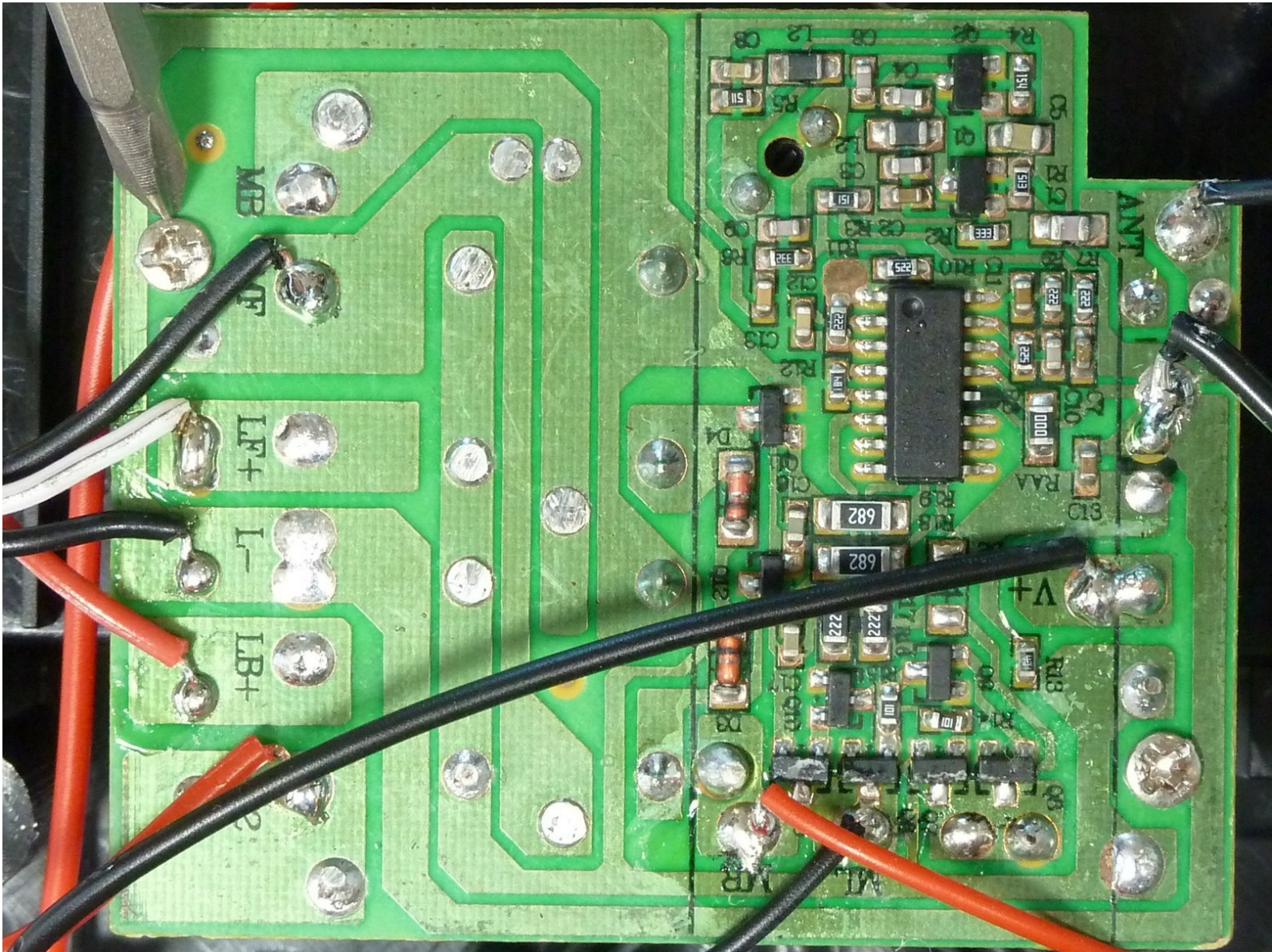




X-street Lamborghini Murcielago LP670-4 SV Motherboard Replacement

Replace your dead motherboard to give your car new life.

Written By: Alex Borsotti



INTRODUCTION

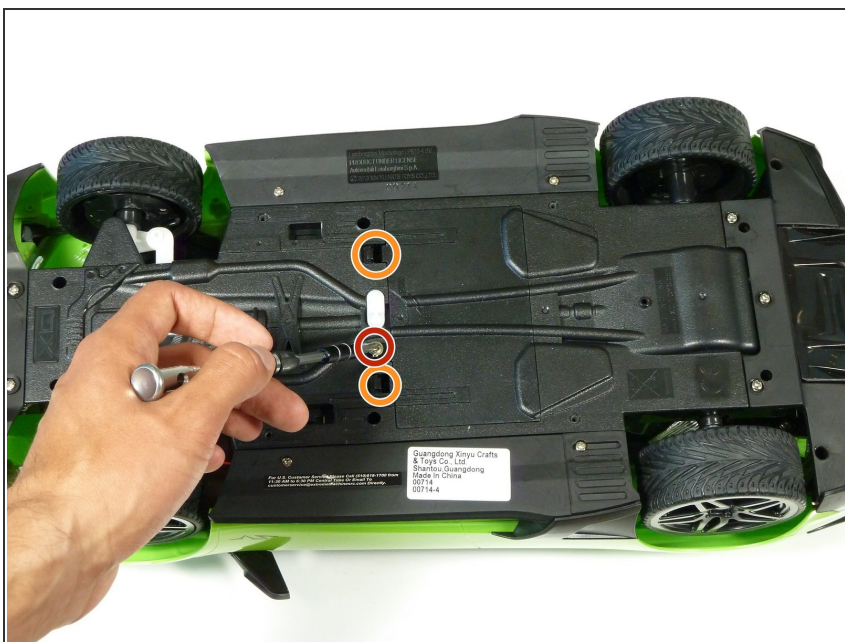
The motherboard controls all actions of the RC car including steering, acceleration, and communication with the remote. A faulty motherboard will lead to many glitches and unresponsive action in all involved systems.



TOOLS:

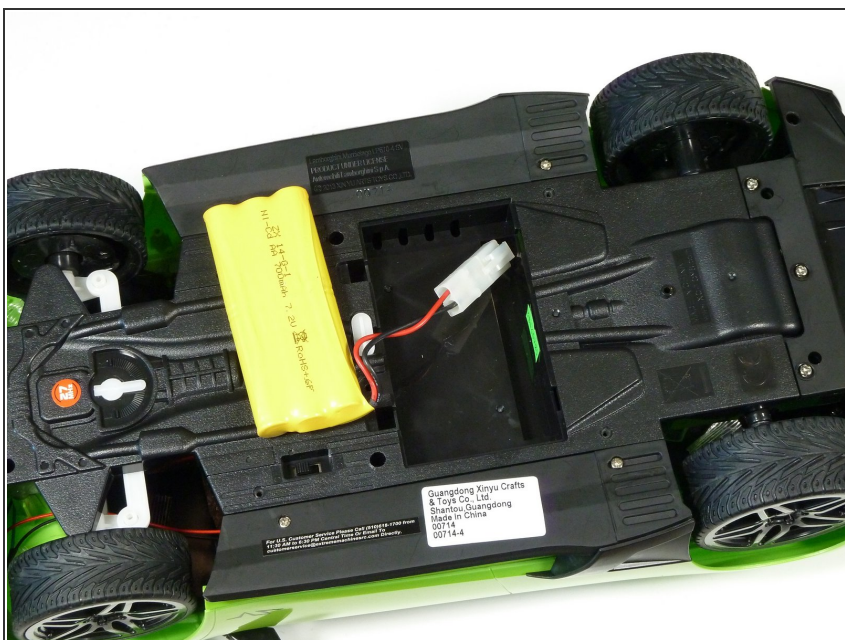
- [Phillips #00 Screwdriver](#) (1)
 - [Phillips #000 Screwdriver](#) (1)
 - [Soldering Workstation](#) (1)
-

Step 1 — Battery



- Unscrew the two 2.5mm Phillips #00 screws from the middle of the car.
- Unclip the two clips to remove the battery cover.

Step 2



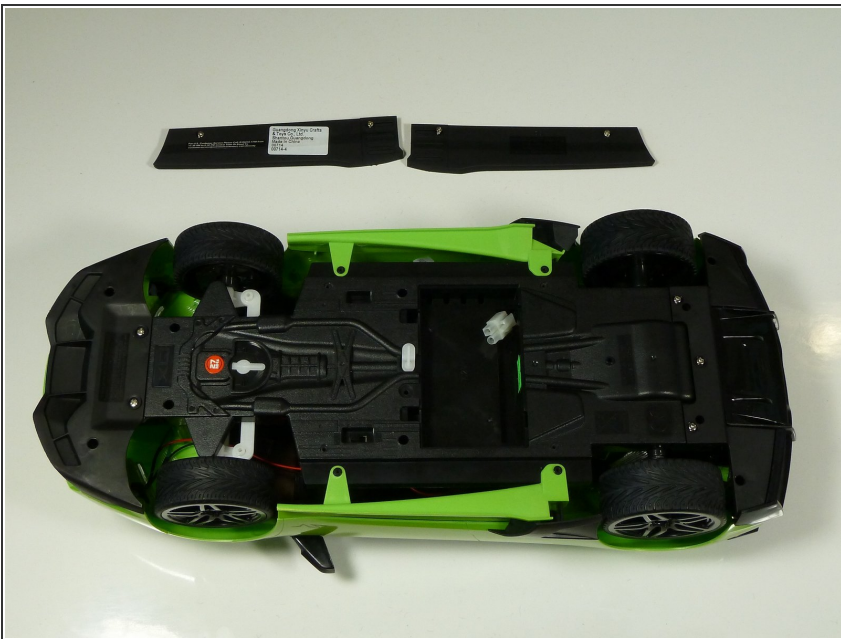
- Unplug the battery by pushing on the clip.

Step 3 — Underbody



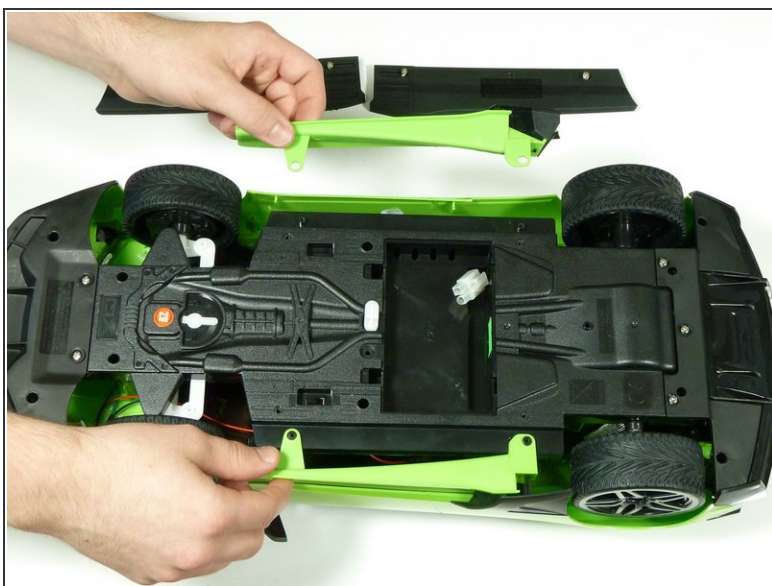
- Unscrew the two 2.5mm Phillips #00 screws from each side

Step 4



- Remove the side skirt covers on each side of the car.

Step 5



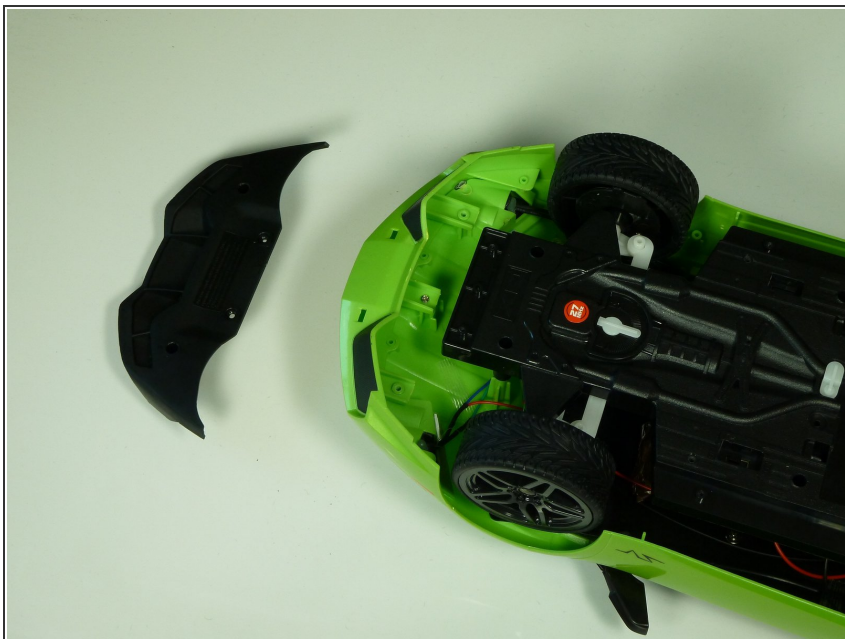
- Lift up and remove the two side skirts.

Step 6



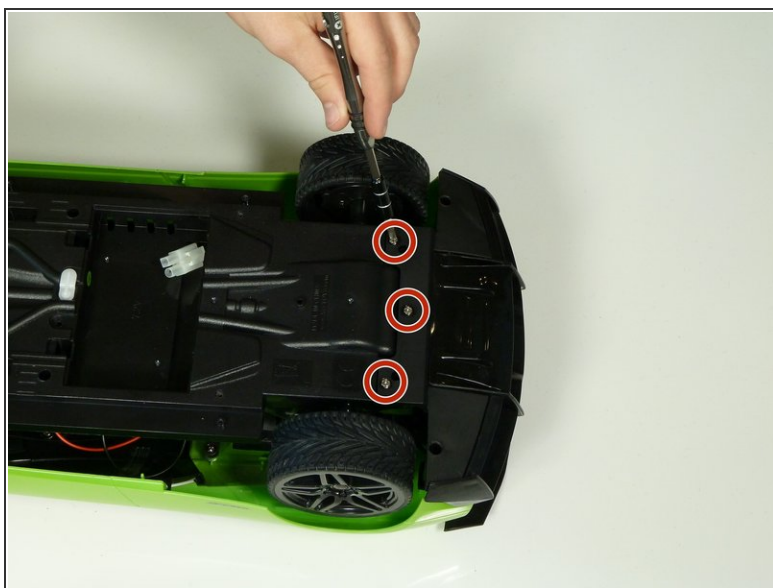
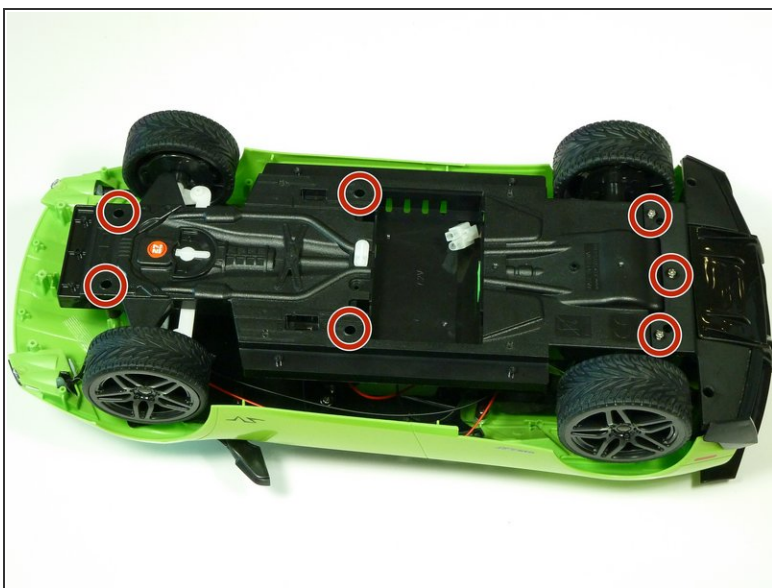
- Unscrew the two 2.5mm Phillips #00 screws from the front skirt of the car.

Step 7




- Lift the front part of the underbody and pull it out from the main underbody.

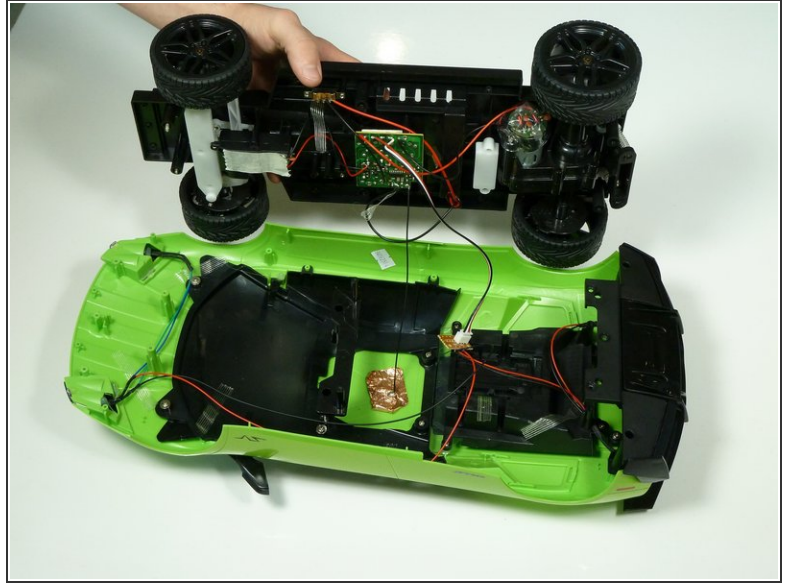
Step 8



- Unscrew the remaining seven 9mm Phillips #00 screws from the underbody of the car.

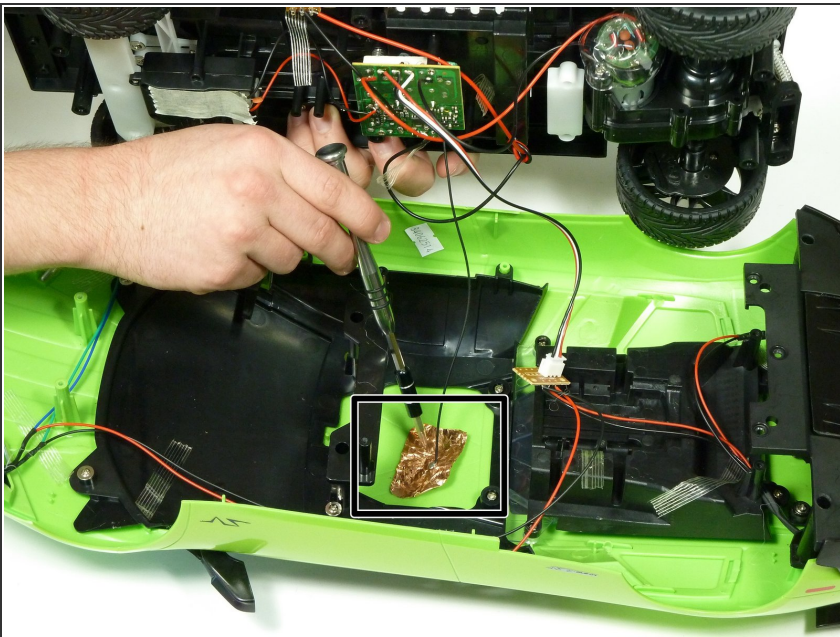
 The second image shows a closer view of the rear three screws

Step 9



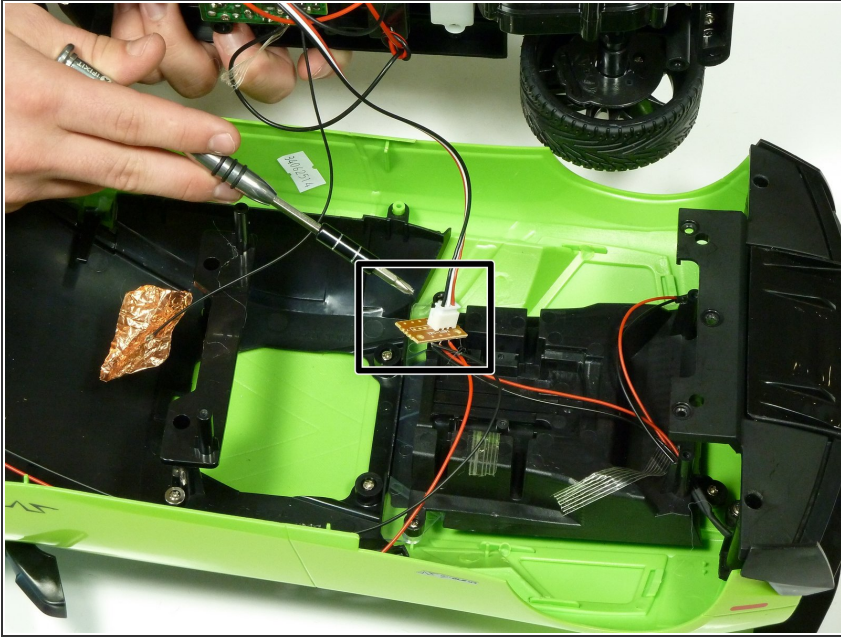
- Lift the main underbody from the shell of the car.
- Lift up the body to expose the wiring and hardware underneath.

Step 10



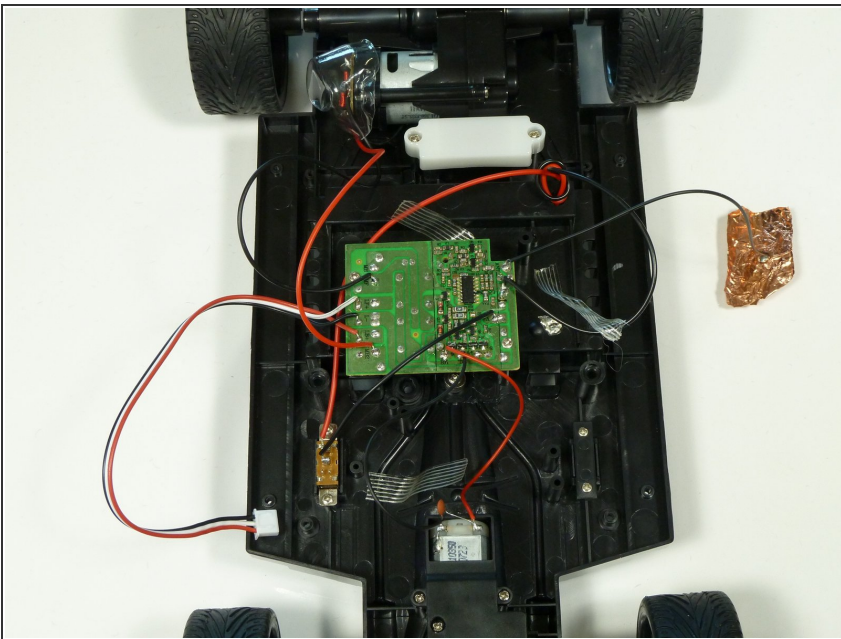
- Remove the reflective sticker from the top of the body.

Step 11



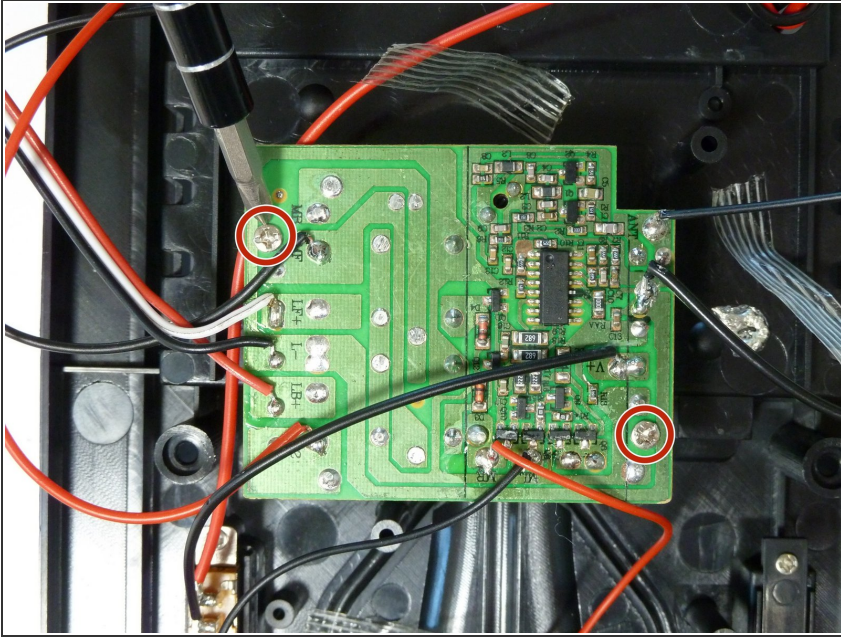
- Unplug the wire connector.

Step 12 — Motherboard



- Desolder all wires connected to the motherboard.
- In this step, you will have to take great care in keeping track of the wires
- Our suggestion is to attach tape to each wire, and letter the tape. Letter each tape according to the respective lettering found on the motherboard.

Step 13



- Unscrew the two 1.6mm Phillips #000 screws connecting the motherboard to the under body of the car.

To reassemble your device, follow these instructions in reverse order.