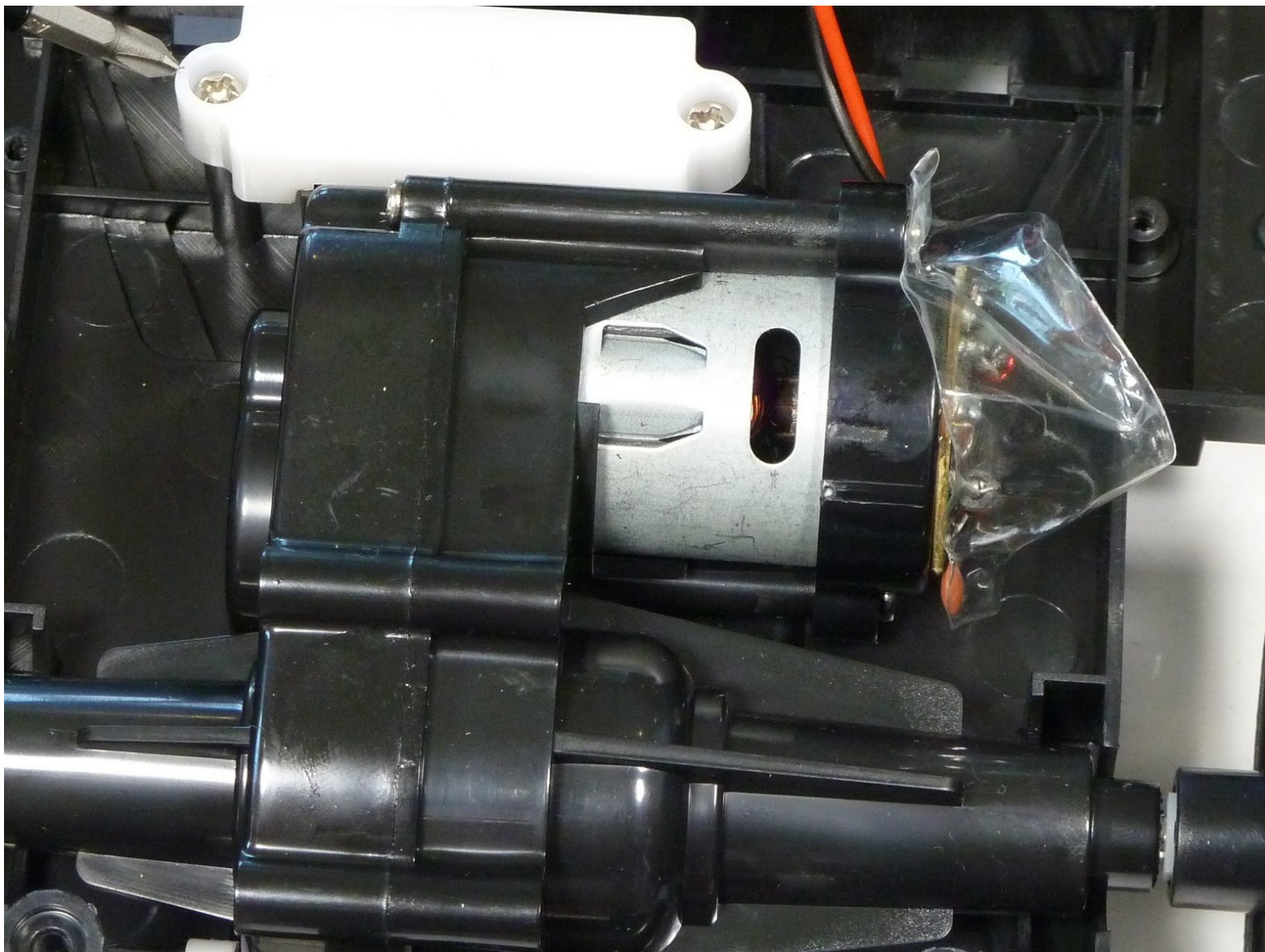




X-street Lamborghini Murcielago LP670-4 SV Rear Motor Replacement

This guide will detail the process of accessing the rear motor for easy removal.

Written By: Trent Peterson



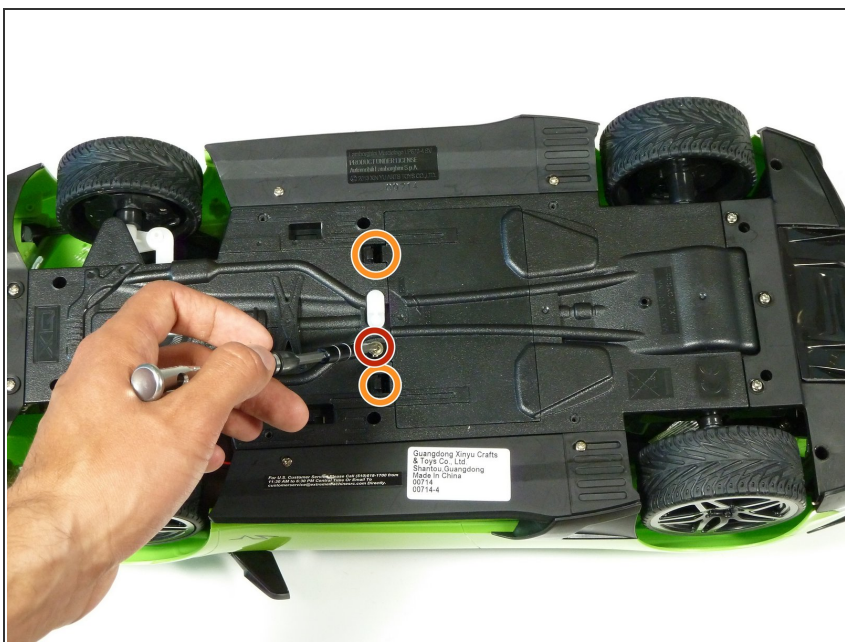
INTRODUCTION

The rear motor drives the power to the rear wheels of the car. It is one of the more complex parts of the car that takes time to get to. If the car isn't sending power to the wheels, then this replacement guide is the key.

TOOLS:

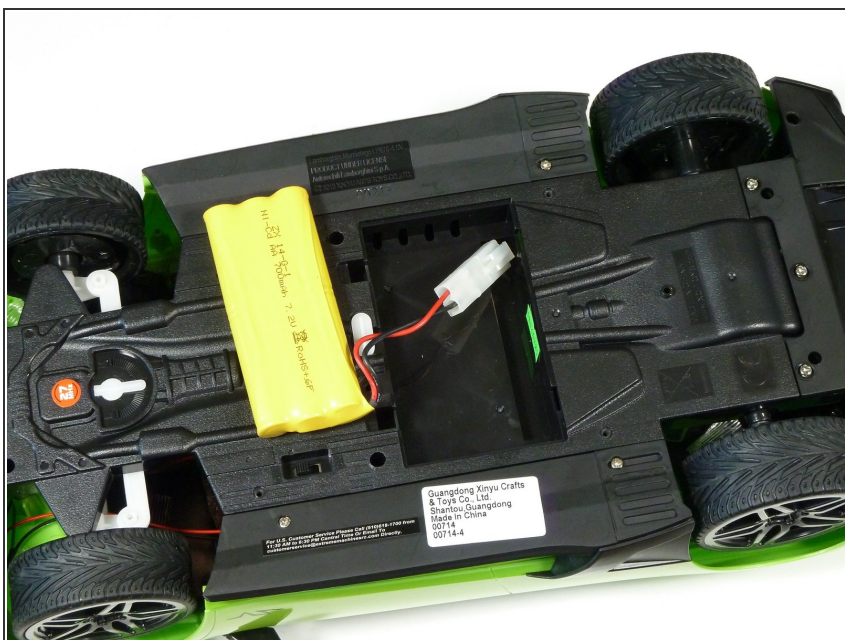
- [Phillips #00 Screwdriver](#) (1)
 - [Phillips #000 Screwdriver](#) (1)
 - [Soldering Workstation](#) (1)
-

Step 1 — Battery



- Unscrew the two 2.5mm Phillips #00 screws from the middle of the car.
- Unclip the two clips to remove the battery cover.

Step 2



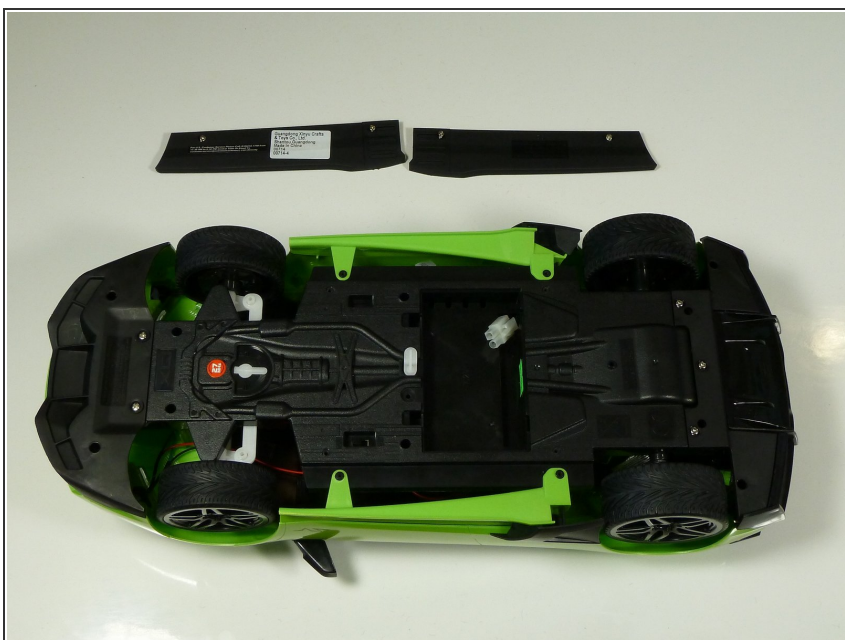
- Unplug the battery by pushing on the clip.

Step 3 — Underbody



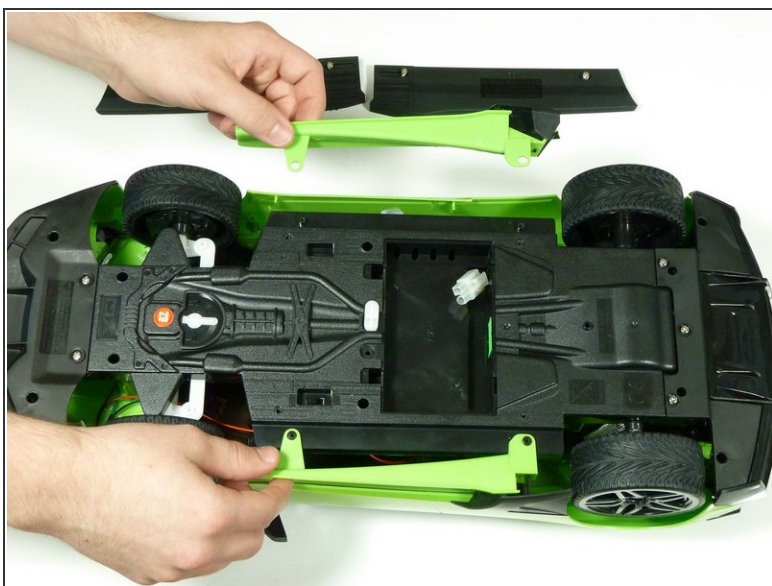
- Unscrew the two 2.5mm Phillips #00 screws from each side

Step 4



- Remove the side skirt covers on each side of the car.

Step 5



- Lift up and remove the two side skirts.

Step 6



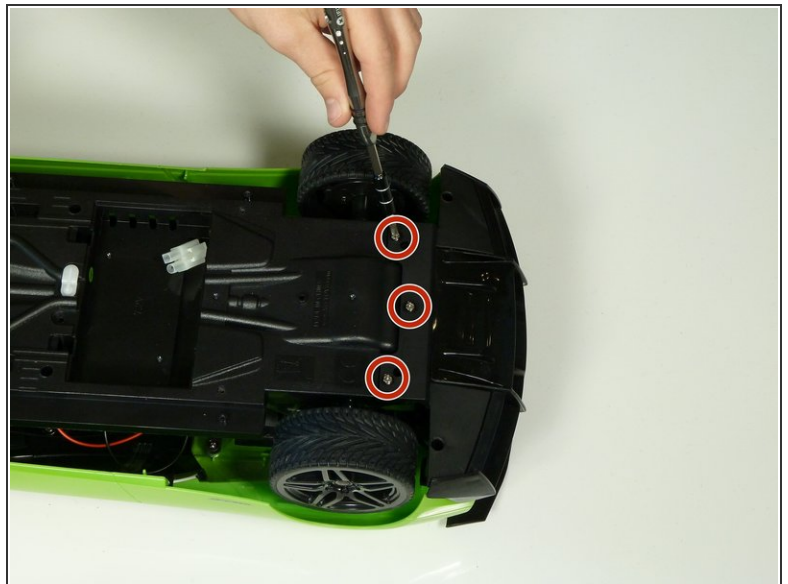
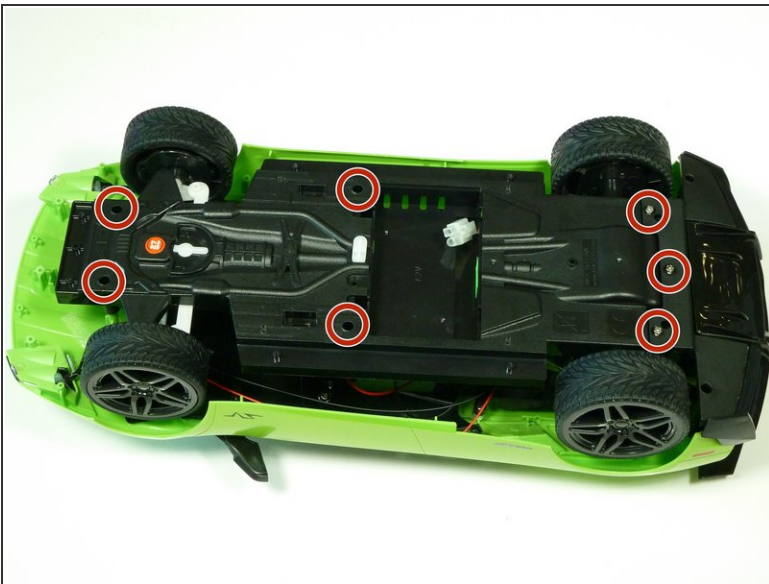
- Unscrew the two 2.5mm Phillips #00 screws from the front skirt of the car.

Step 7




- Lift the front part of the underbody and pull it out from the main underbody.

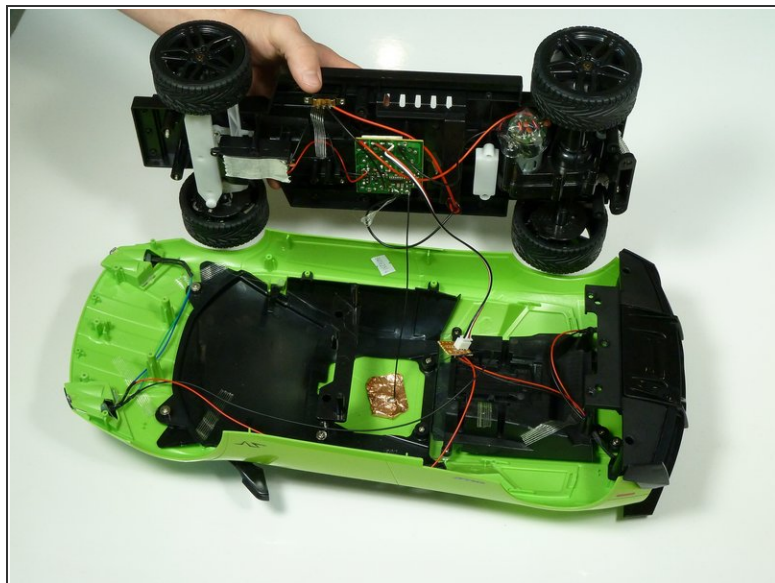
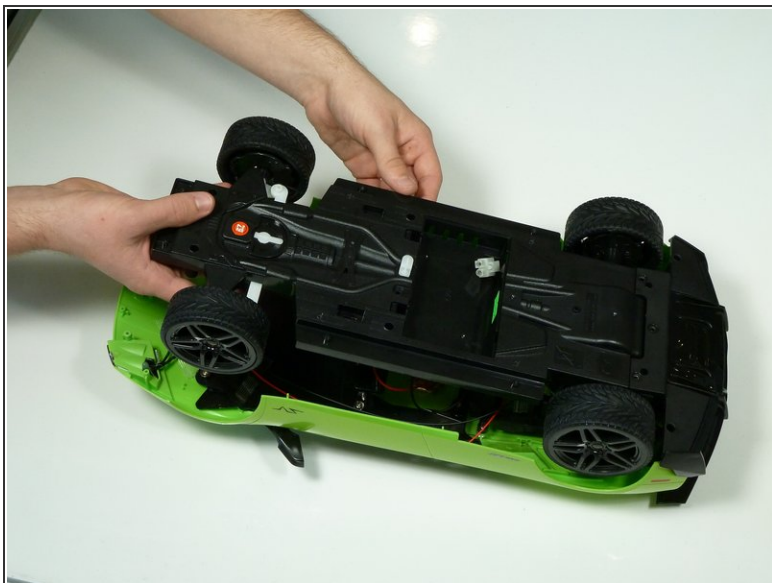
Step 8



- Unscrew the remaining seven 9mm Phillips #00 screws from the underbody of the car.

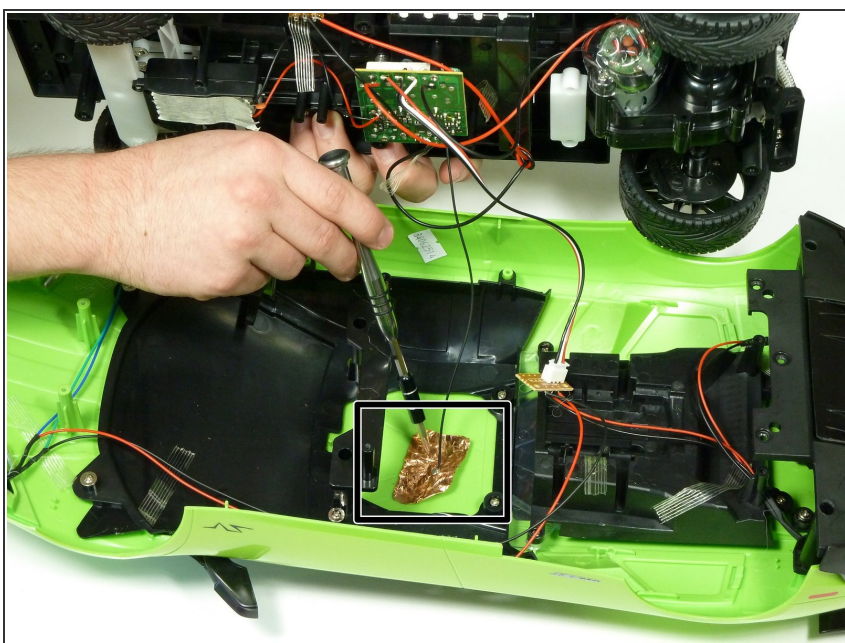
 The second image shows a closer view of the rear three screws

Step 9



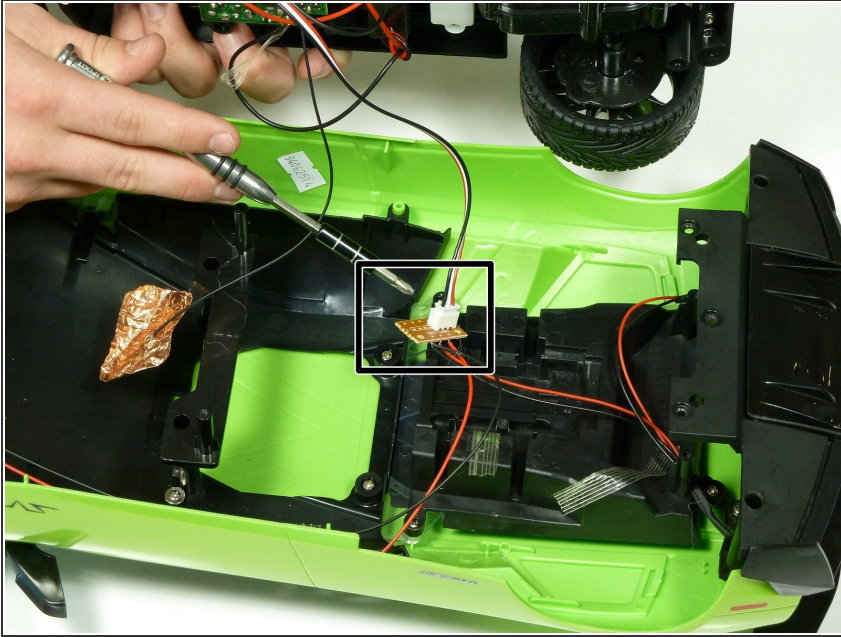
- Lift the main underbody from the shell of the car.
- Lift up the body to expose the wiring and hardware underneath.

Step 10



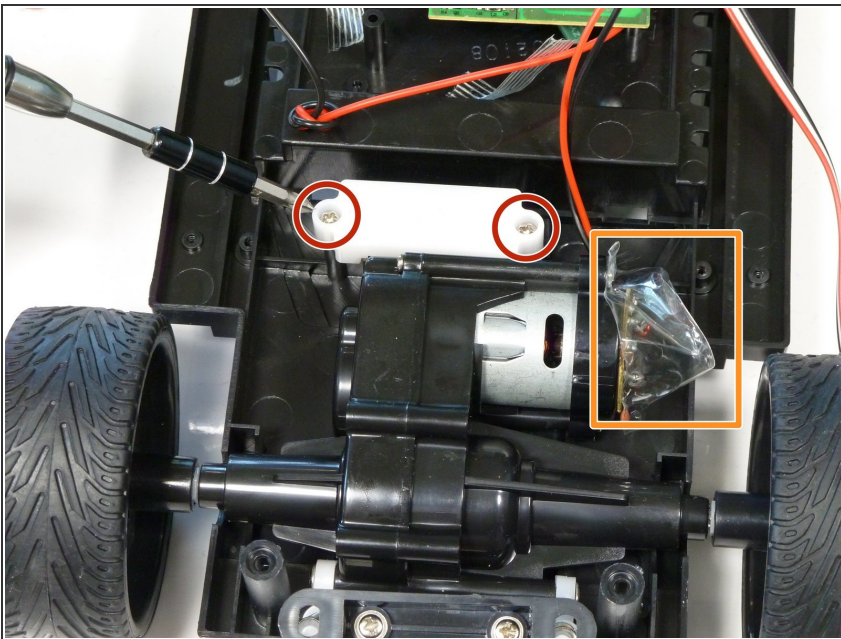
- Remove the reflective sticker from the top of the body.

Step 11



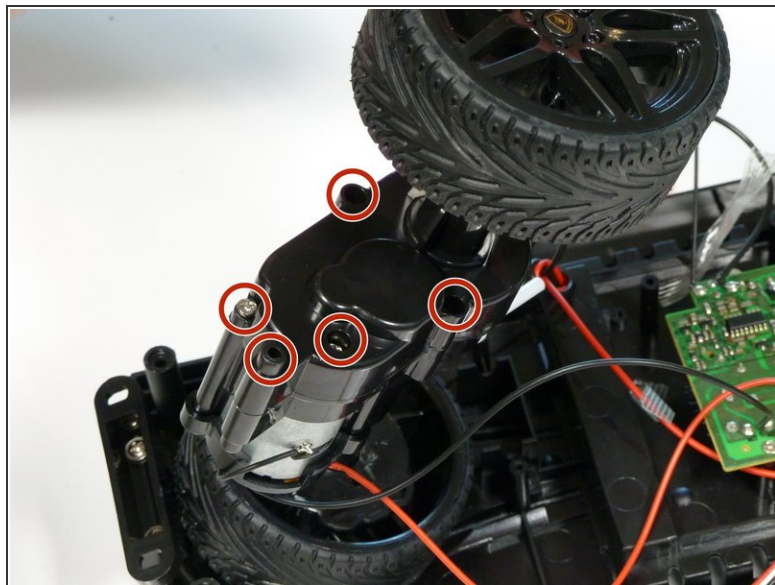
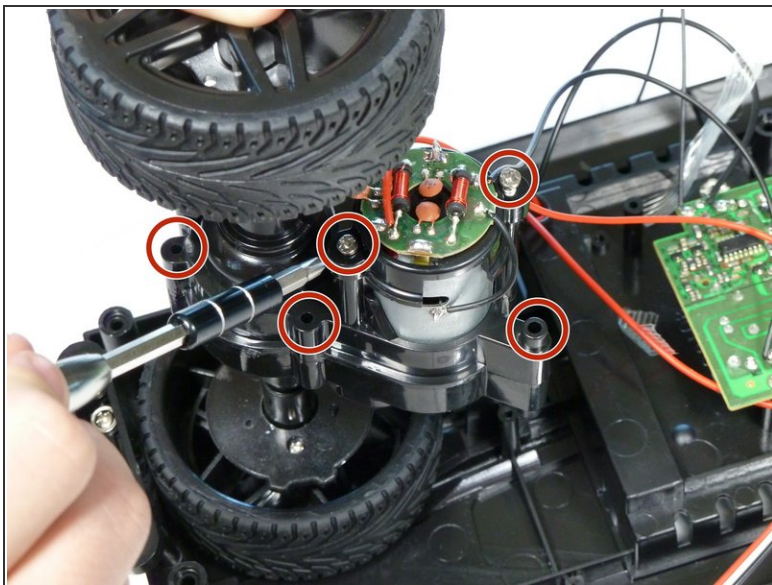
- Unplug the wire connector.

Step 12 — Rear Motor



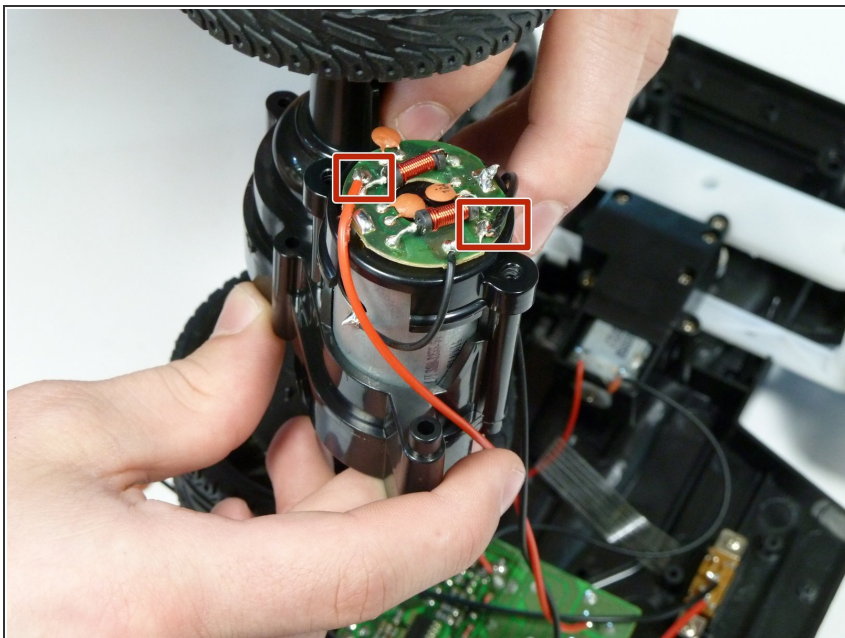
- Unscrew the two 2.5mm Phillips #00 screws on the white covering of the rear motor casing.
- There is a plastic casing over the rear motor. Simply remove this plastic covering and proceed.

Step 13



- Remove all ten 1.6mm Phillips #000 screws from the rear motor casing
 - ⓘ The first image shows five screws on the side with the circuitry
 - ⓘ The second image shows five screws on the opposite side of the casing.

Step 14



- Use a soldering gun to remove the attached wires

To reassemble your device, follow these instructions in reverse order.