



# Xbox 360 Disc Drive Replacement

Some disc drives may malfunction and needs to be replaced. This guide is to show you just that!

Written By: Jason Friedman





## TOOLS:

- [Spudger](#) (1)
- [T8 Torx Screwdriver](#) (1)
- [T10 Torx Screwdriver](#) (1)
- [Xbox 360 Opening Tool](#) (1)

## Step 1 — Disc Drive



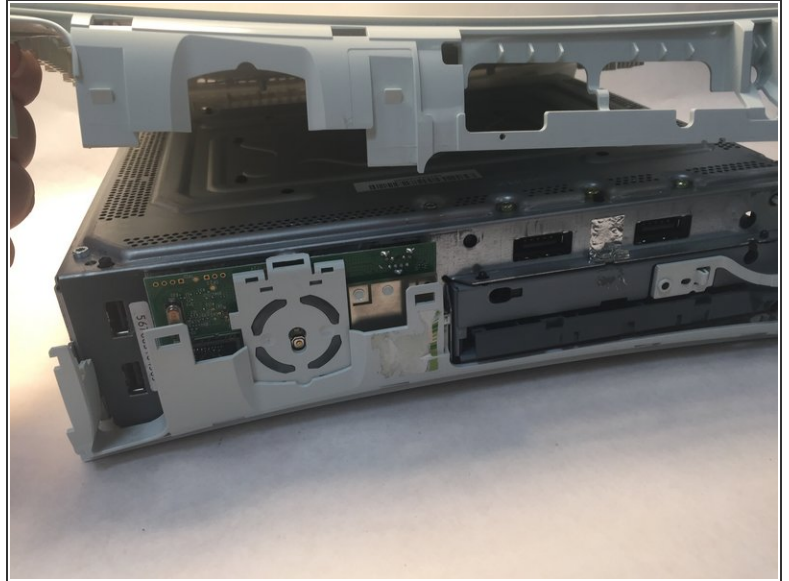
- Use a spudger to pry open the top face plate, make sure not to break any of the clips, or the plate itself.

## Step 2



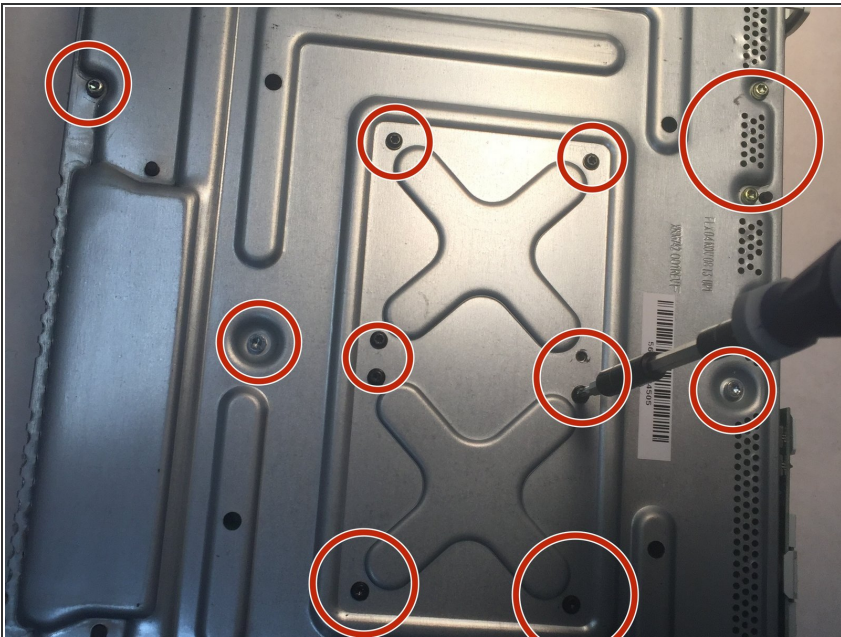
- Pry or wiggle off gray end plates from the top and bottom of the console.

### Step 3



- Unlock clips from the front of the console and take off white hood. Pull hood up to remove it.

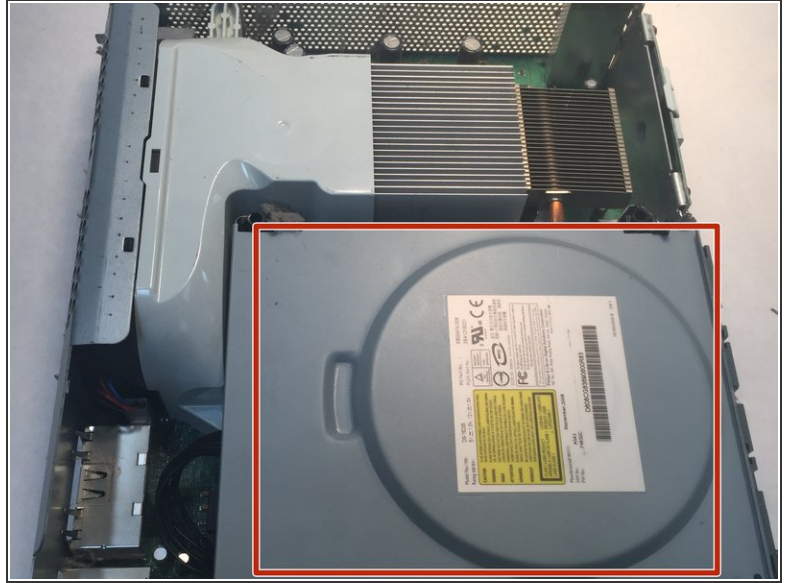
### Step 4



- Unscrew screws from metal compartment. Screw size and color on device: 6.1 Silver 0.9 Gold 0.4 Black
- T-8 screw head is required.



## Step 5



- Remove the metal hood.
- Find the Disc drive.

## Step 6



- Remove the disc drive removing the output and input plugs.

To reassemble your device, follow these instructions in reverse order.