



Xbox 360 E CD Drive Replacement

Replace the CD drive of the Xbox 360 E.

Written By: George



INTRODUCTION

Following this guide involves opening the Xbox 360 E and is somewhat more involved than replacing other parts of the Xbox.



TOOLS:

- [Spudger](#) (1)
-

Step 1 — Top Panel



- Push the [Spudger](#) into the crevice between the grated top panel of the Xbox and the bottom body with the rubber feet.
- Pull back on the spudger like a lever, keeping it pressed firmly into the crevice.

Step 2



- Slide the spudger along the separation you have created between the grated panel and the bottom body of the Xbox.
- Periodically pull back on the spudger like a lever, keeping it pressed firmly into the crevice.

Step 3



- Continue sliding the spudger along the perimeter of the left grated face of the Xbox.
- Pull the top panel off.

Step 4 — Wi-Fi Card



- Remove the 11 mm screw left of the green wifi-card using the T9 Torx screw bit.

Step 5



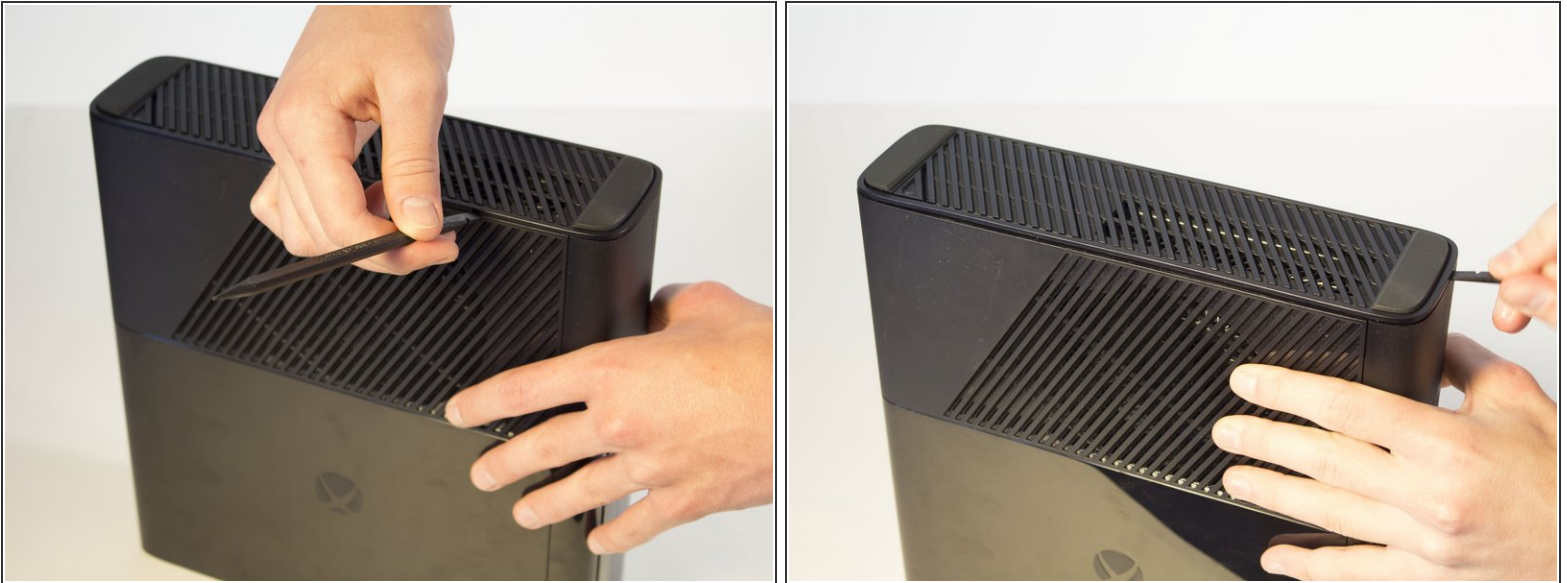
- Firmly grip the green Wi-Fi card and pull it out of the Xbox.

Step 6 — Bottom Panel



- Push the spudger into the crevice between the right grated face and the top body of the Xbox. It's easier to begin away from the vent.
- Pull up on the spudger like a lever, keeping it pressed firmly into the crevice.

Step 7



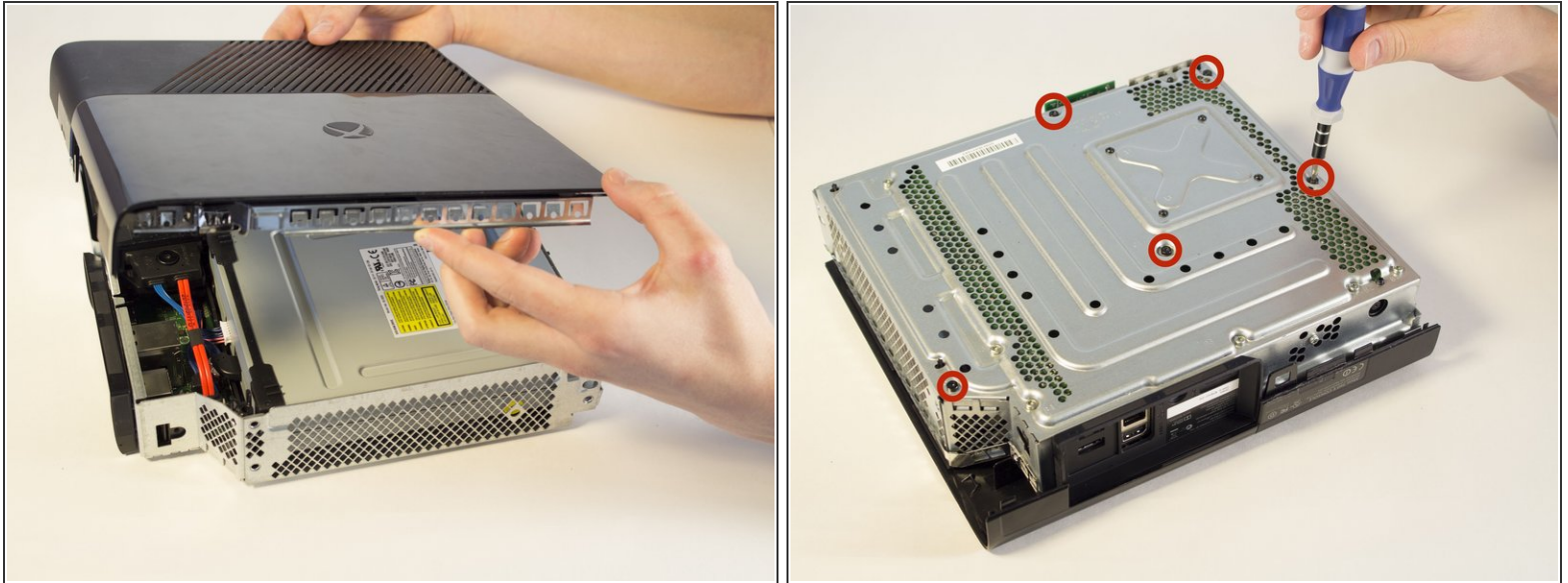
- Slide the spudger along the crevice to separate the grated face and the top body.

Step 8



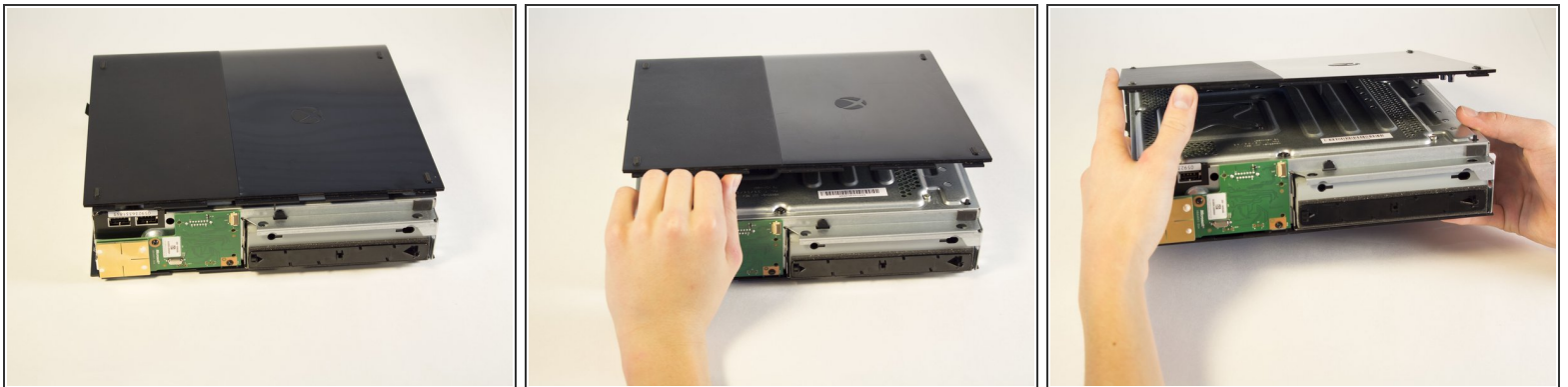
- Wiggle the spudger in the crevice as you slide the spudger to loosen the bottom plate.
- Slide the spudger along the crevice, going completely about the perimeter of the bottom panel.
- Pull the bottom panel off.

Step 9 — Top Body



- Remove the five long black 55 mm screws labeled C2-5 and C7 with a T9 Torx screwdriver.
- Carefully flip the device and pull off the body by lifting from the metal section that is attached to the plastic exterior.

Step 10 — Bottom Body




- Orient the Xbox so the bottom body is facing upwards. Make sure you see the rubber feet to know you have the correct side of the device.
- Lift the bottom body slightly away from the core at a 45 degree angle.


Step 11



- Rotate the Xbox so you are now looking at the back of the device.

 This step of disassembly requires the removal of the warranty sticker. This will void your warranty. Check the main page for a link to warranty information from Microsoft.

- Remove the sticker from the back of the Xbox.

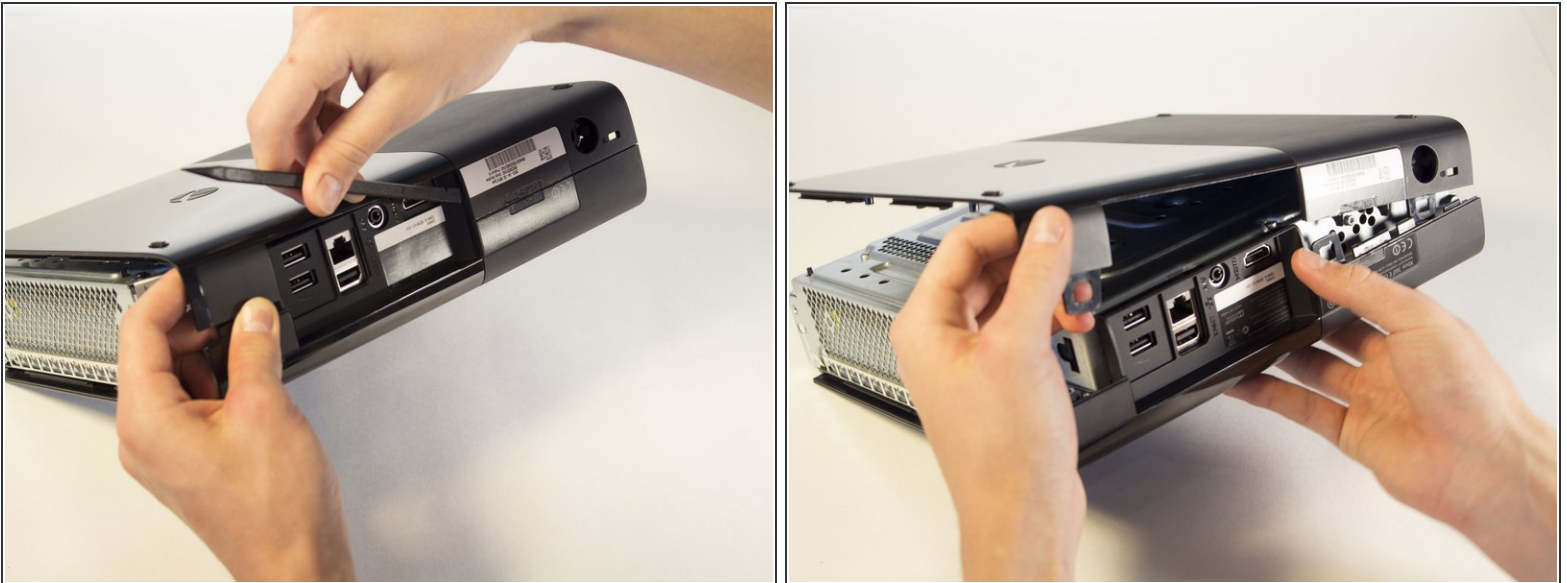
 *The sticker is not needed for reassembly.*

Step 12



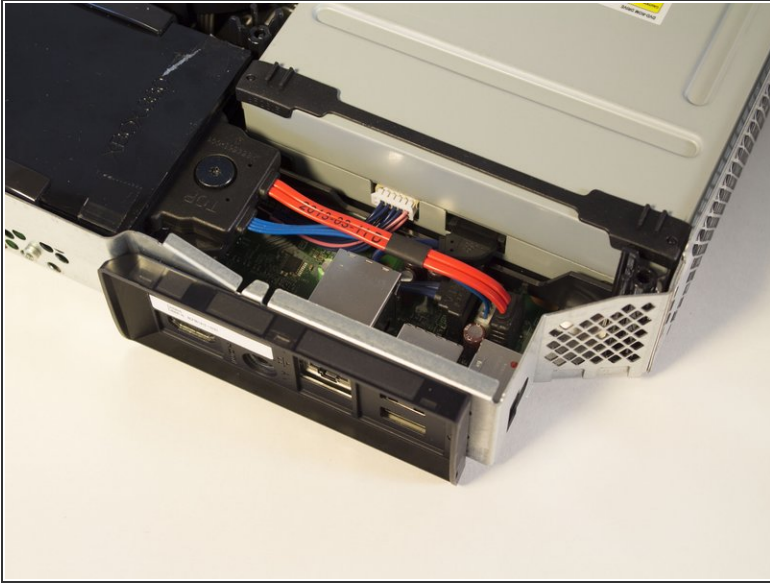
- Turn the Xbox to the left to locate the clip holding the body together.
- With a spudger, press up on the clip like a latch. Move to the far end to undo the other clip the same way.

Step 13



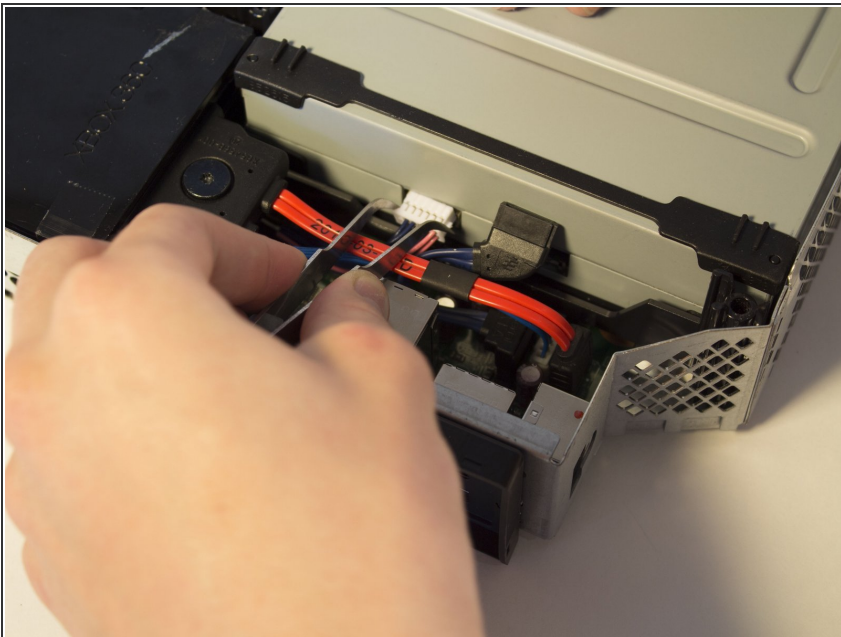
- Push the spudger into the crevice. Slide the spudger along the vertical crevice to detach the last clip. The bottom body should slide off after this.

Step 14 — CD Drive



- Use your fingers to unplug the blue ribbon cable from the CD drive.

Step 15



- Use tweezers to unplug the blue and pink wires.

Step 16



- Lift the front end of the CD drive and take it out.

To reassemble your device, follow these instructions in reverse order.