



# Xbox 360 E Wi-Fi Card Replacement

Replace the Wi-Fi card in the Xbox 360 E.

Written By: Jennifer



# INTRODUCTION

When you can't download the game you just have to have follow this guide to replace your Wi-Fi card.



## TOOLS:

- [T9 Torx Screwdriver](#) (1)
- [Spudger](#) (1)



## PARTS:

- [Xbox 360 WiFi Card](#) (1)

## Step 1 — Top Panel



- Push the [Spudger](#) into the crevice between the grated top panel of the Xbox and the bottom body with the rubber feet.
- Pull back on the spudger like a lever, keeping it pressed firmly into the crevice.

## Step 2



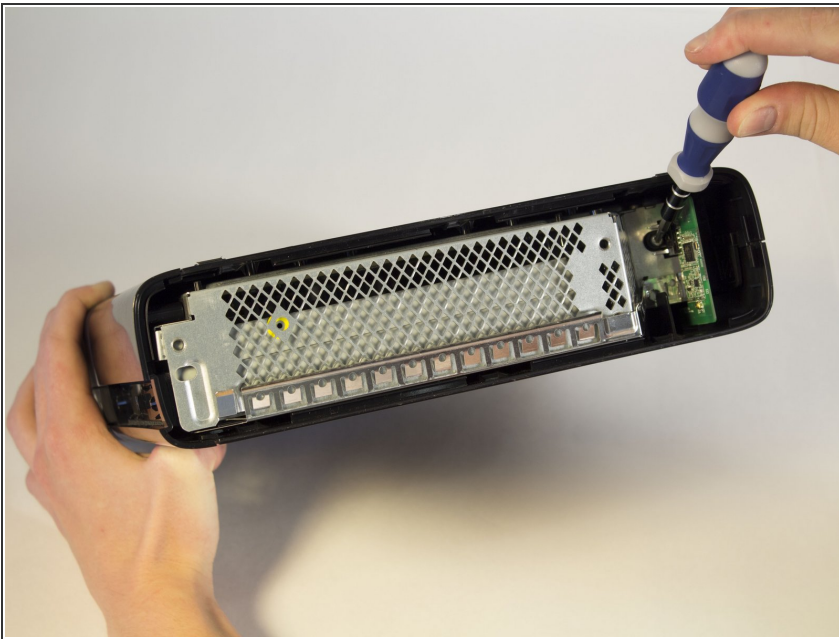
- Slide the spudger along the separation you have created between the grated panel and the bottom body of the Xbox.
- Periodically pull back on the spudger like a lever, keeping it pressed firmly into the crevice.

### Step 3



- Continue sliding the spudger along the perimeter of the left grated face of the Xbox.
- Pull the top panel off.

### Step 4 — Wi-Fi Card



- Remove the 11 mm screw left of the green wifi-card using the T9 Torx screw bit.



## Step 5



- Firmly grip the green Wi-Fi card and pull it out of the Xbox.

To reassemble your device, follow these instructions in reverse order.