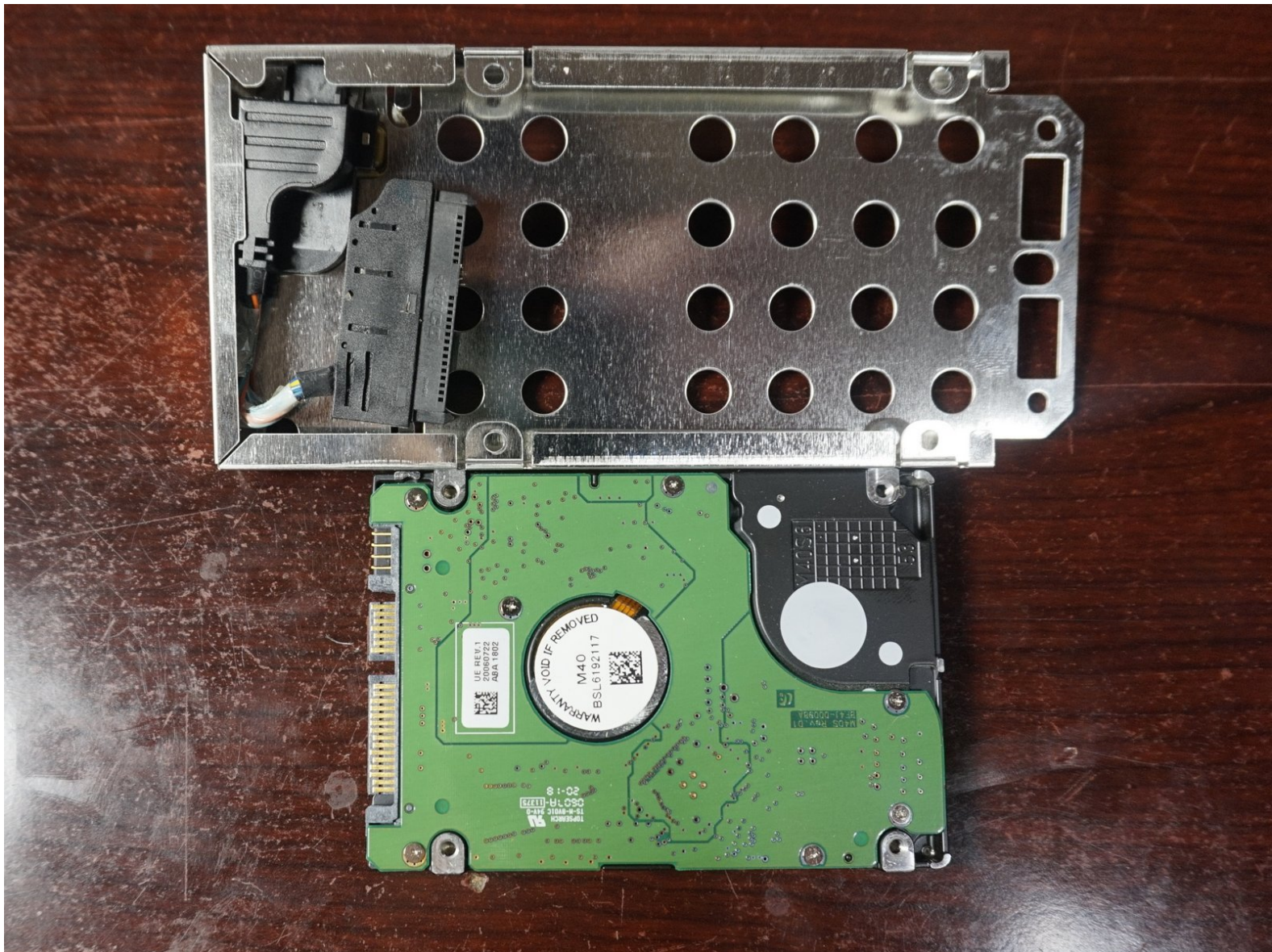




# Xbox 360 Hard Drive (Internal) Replacement

This guide will show you how to replace the internal drive for your Xbox 360 (Fat) drive.

Written By: Nick



# INTRODUCTION

*This guide is inspired by the [existing guide](#) on iFixit. This is an improvement of the original with a better procedure.*

**ATTENTION: Technically the Xbox Live ToS prohibit this, but the Xbox Live enforcement team typically doesn't care about the hard drive modification. You may be banned from Xbox Live. YOU HAVE BEEN WARNED!!!**

**WARNING: THIS WILL VOID YOUR WARRANTY if you have one.**

If you have a low capacity hard drive and want to upgrade it or need the hard drive for a modern system, this guide will show you how to take the fat 360 hard drive apart to extract the hard drive. Taking this drive apart isn't a difficult task, but it requires access to Torx T6 and T10 screwdrivers.

Once the enclosure is open, any compatible drive can be installed. There may be compatibility limitations to deal with, so buy the correct drive or it may not work.

## Guide notes

- Try not to destroy the enclosure if you do not need it. These have residual value and can be sold to recoup some of your costs.
- Any known compatible drive can be installed. Some drives do not work, so bear this in mind when purchasing a drive.



## TOOLS:

- [Essential Electronics Toolkit](#) (1)  
T6 and T10 bits required.
-



## Step 1 — Remove the bottom screws




 ***This will void any present warranty. All Microsoft warranties are expired.***

 ***Depending on where your drive comes from, there may or may not be a warranty seal.***

- Remove the **3 screws** from the bottom of the drive. Use a **T6 Torx** driver.
- Remove the warranty seal (if present) and remove the final screw. Use a **T6 Torx** driver.

## Step 2 — Disassembly tip



-  If your drive is difficult to open, a screwdriver or plastic pry tool can be used to help open the enclosure.

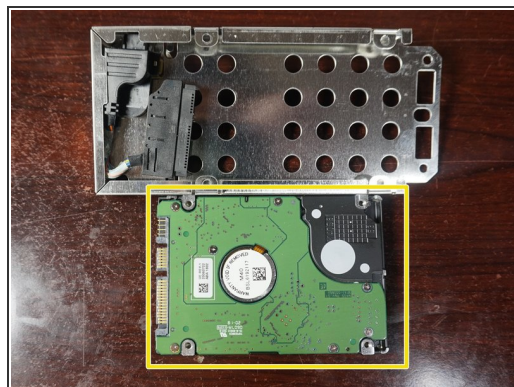
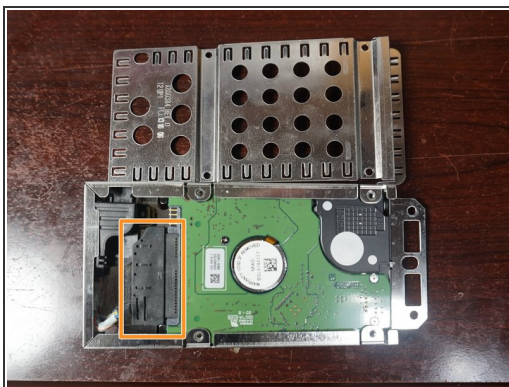
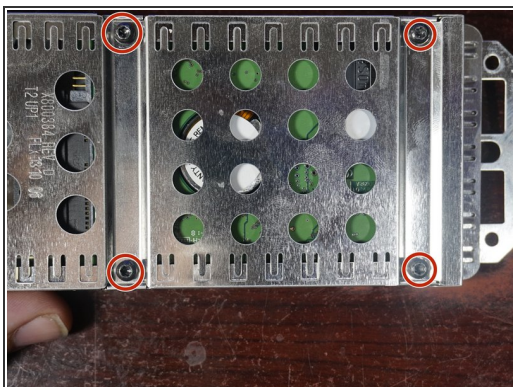
### Step 3 — Open the drive



☞ If you are taking the enclosure apart for the bare drive, less caution is needed.

- **After removing the 4 bottom screws**, remove the bottom cover. The top of the drive will come off first. **Note: Open the drive where the spring will not get lost.**
- **After removing the top of the drive**, remove the drive from the enclosure. **Unopened drives will have more adhesive strength.**

### Step 4 — Disconnect and remove the hard drive



- Remove the **four T10 Torx** screws holding the cover and hard drive.
- After removing the screws, **slide the top cover off** and disconnect the drive.
- **Disconnect the hard drive** and remove it from the enclosure.