



# Xbox 360 Wireless Controller Logic Board Replacement

Written By: Brett Hartt



 **TOOLS:**

- [Spudger](#) (1)
  - [T8 Torx Security Bit Screwdriver](#) (1)
  - [Tweezers](#) (1)
-

## Step 1 — Battery



- Depress the battery release button on the top of the controller.
  - Remove the battery holder from the controller.
- i** The standard option for Xbox 360 Wireless Controllers Battery Packs is AA batteries. A rechargeable battery is also available, but both battery options are removed from the controller in the same way.

## Step 2 — Rear Case



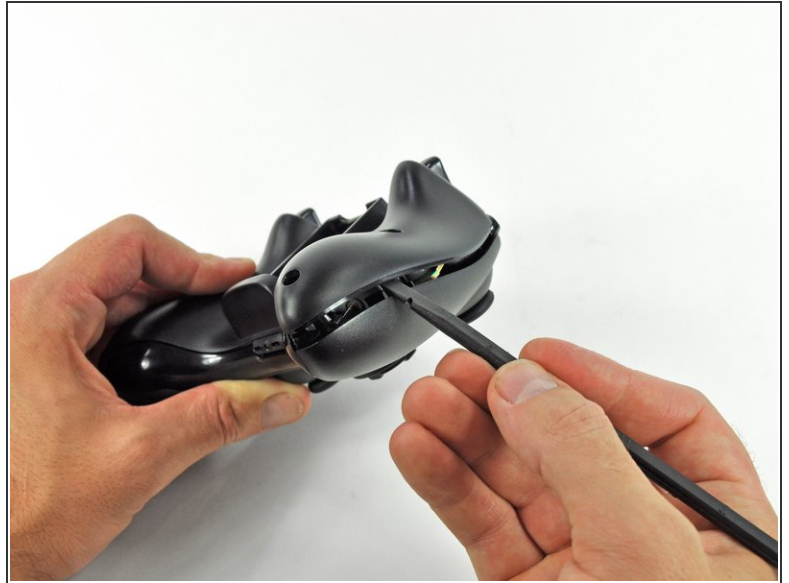
- Use a pair of tweezers to peel the barcode sticker from the battery compartment.

## Step 3



- Remove the seven 9.3 mm T8 Security Torx screws securing the rear case to the front case.

## Step 4



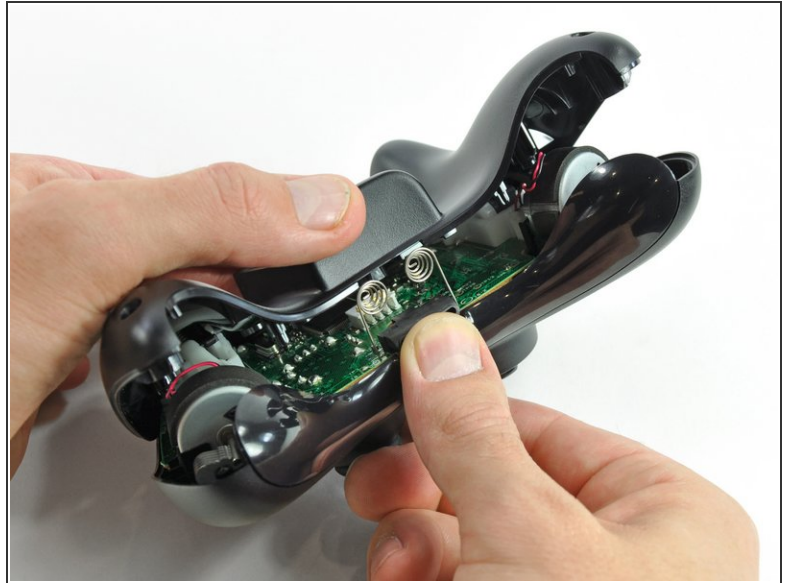
- Insert a [Spudger](#) between the front and rear cases along the left edge of the controller.
- Rotate the spudger toward the front of the controller, prying the two cases apart.

## Step 5



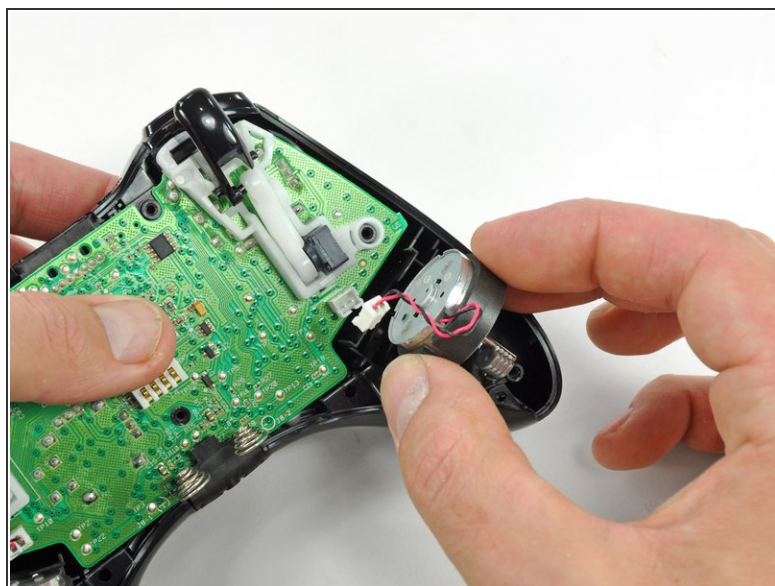
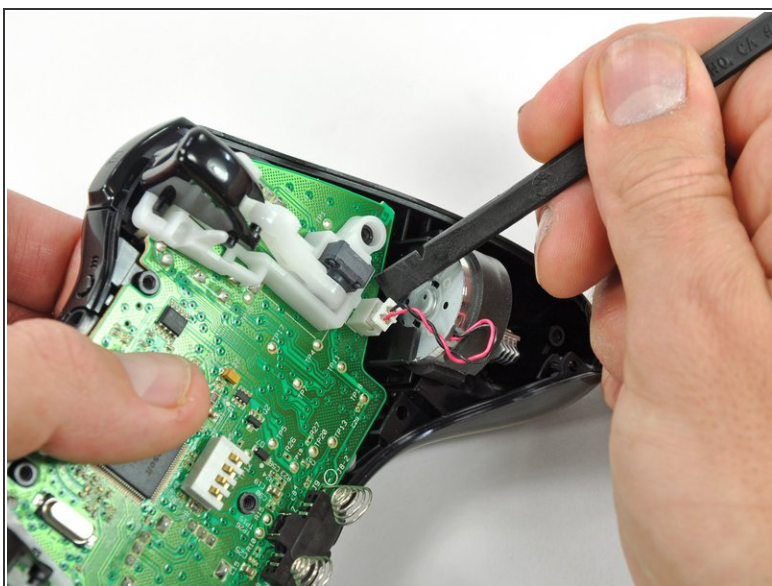
- Insert a spudger between the front and rear cases, near the headphone jack.
- Rotate the spudger toward the front of the controller to pry the two cases apart.

## Step 6



- Grasp the controller by the battery compartment and the headphone jack.
- Lift the battery compartment away from the headphone jack, separating the rear case from the front case and logic board.
- ☑ The battery contact springs are held in place by slots in the battery housing in the rear case. Be sure to realign them properly during reassembly.

## Step 7 — Vibration Motors



- Use the flat end of a spudger to remove the vibration motor cable, moving it upward from its socket on the logic board.
- Lift the vibration motor out of the front case.

## Step 8



- Remove the vibration motor from the other side of the controller using the same method previously described.
- ⓘ The right motor has significantly more counterweight than the left motor.

## Step 9 — Logic Board



- Lifting from the headphone jack and power plug, remove the logic board from the front case.

To reassemble your device, follow these instructions in reverse order.