



# Xbox 360 Wireless Controller Rear Case Replacement

Rear case replacement.

Written By: Brett Hartt



---

## INTRODUCTION

Stop holding your Xbox 360 wireless controller together with duct tape. Use this guide to replace your old broken rear case.



### TOOLS:

- [Spudger](#) (1)
  - [T8 Torx Security Bit Screwdriver](#) (1)
  - [Tweezers](#) (1)
-

## Step 1 — Battery



- Depress the battery release button on the top of the controller.
  - Remove the battery holder from the controller.
- i** The standard option for Xbox 360 Wireless Controllers Battery Packs is AA batteries. A rechargeable battery is also available, but both battery options are removed from the controller in the same way.

## Step 2 — Rear Case



- Use a pair of tweezers to peel the barcode sticker from the battery compartment.

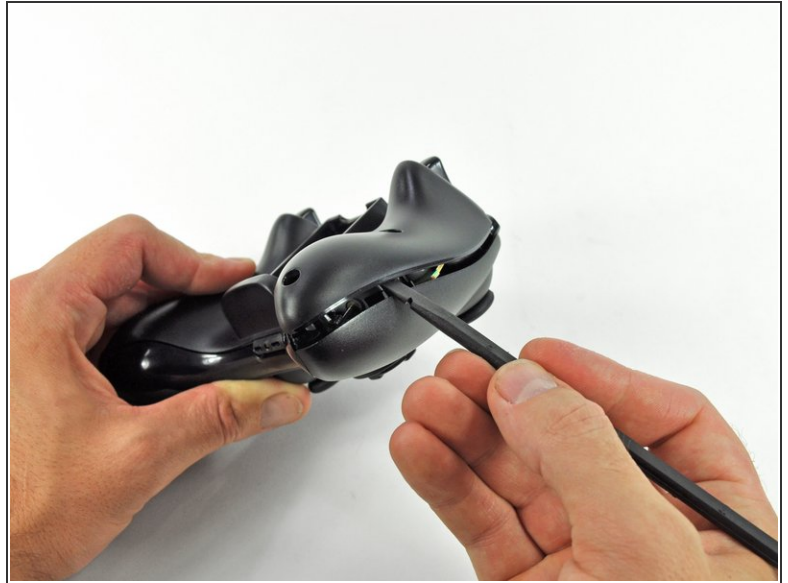
## Step 3



- Remove the seven 9.3 mm T8 Security Torx screws securing the rear case to the front case.



## Step 4



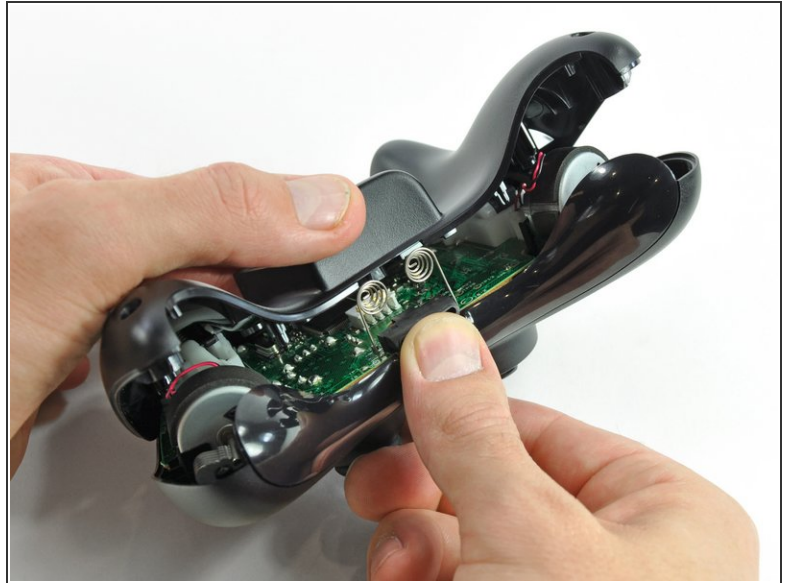
- Insert a [Spudger](#) between the front and rear cases along the left edge of the controller.
- Rotate the spudger toward the front of the controller, prying the two cases apart.

## Step 5



- Insert a spudger between the front and rear cases, near the headphone jack.
- Rotate the spudger toward the front of the controller to pry the two cases apart.

## Step 6



- Grasp the controller by the battery compartment and the headphone jack.
- Lift the battery compartment away from the headphone jack, separating the rear case from the front case and logic board.
- ☑ The battery contact springs are held in place by slots in the battery housing in the rear case. Be sure to realign them properly during reassembly.

To reassemble your device, follow these instructions in reverse order.