



Xbox 360 Wireless Controller Vibration Motors Replacement

Left and right vibrator motor replacement.

Written By: Brett Hartt



INTRODUCTION

Put some feeling back in your gameplay by replacing the vibrator motors in your Xbox 360 wireless controller.



TOOLS:

- [Spudger](#) (1)
 - [T8 Torx Security Bit Screwdriver](#) (1)
 - [Tweezers](#) (1)
-

Step 1 — Battery



- Depress the battery release button on the top of the controller.
 - Remove the battery holder from the controller.
- i** The standard option for Xbox 360 Wireless Controllers Battery Packs is AA batteries. A rechargeable battery is also available, but both battery options are removed from the controller in the same way.

Step 2 — Rear Case



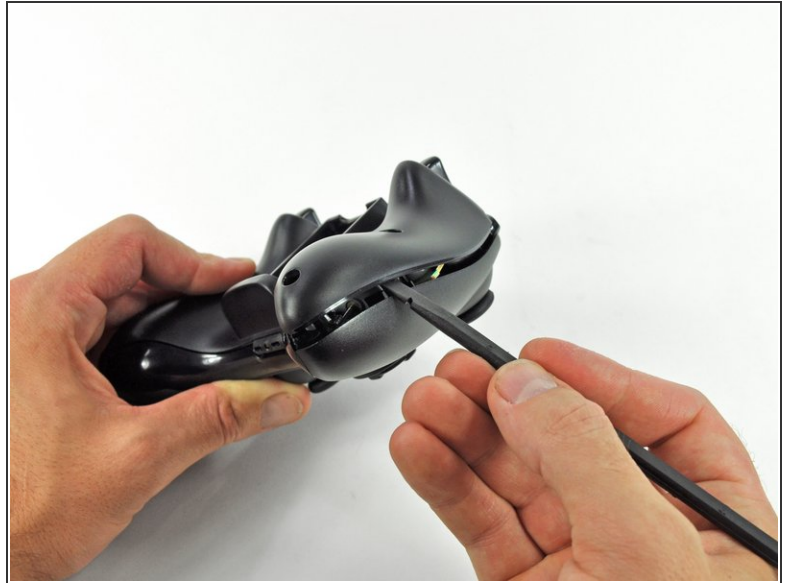
- Use a pair of tweezers to peel the barcode sticker from the battery compartment.

Step 3



- Remove the seven 9.3 mm T8 Security Torx screws securing the rear case to the front case.

Step 4



- Insert a [Spudger](#) between the front and rear cases along the left edge of the controller.
- Rotate the spudger toward the front of the controller, prying the two cases apart.

Step 5



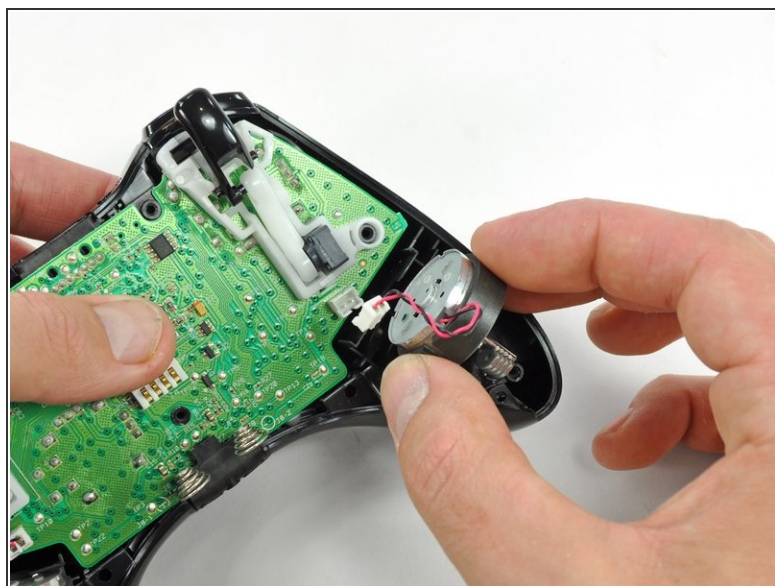
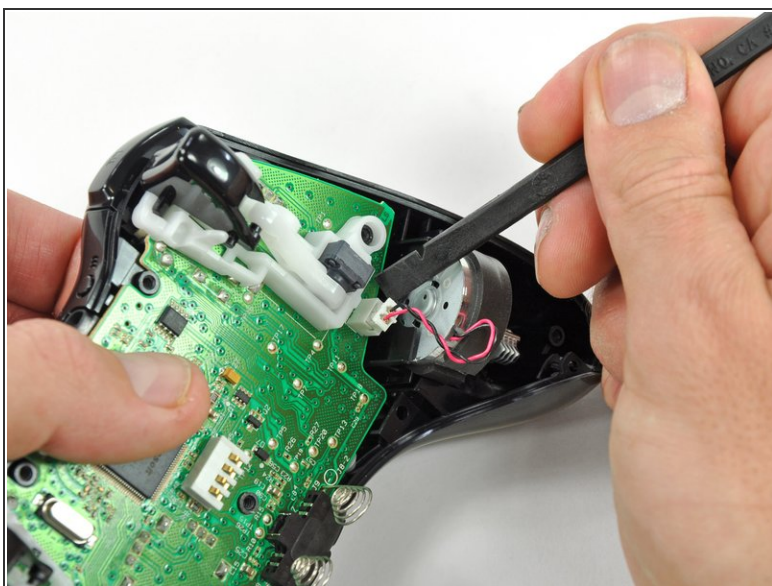
- Insert a spudger between the front and rear cases, near the headphone jack.
- Rotate the spudger toward the front of the controller to pry the two cases apart.

Step 6



- Grasp the controller by the battery compartment and the headphone jack.
- Lift the battery compartment away from the headphone jack, separating the rear case from the front case and logic board.
- ☑ The battery contact springs are held in place by slots in the battery housing in the rear case. Be sure to realign them properly during reassembly.

Step 7 — Vibration Motors



- Use the flat end of a spudger to remove the vibration motor cable, moving it upward from its socket on the logic board.
- Lift the vibration motor out of the front case.

Step 8



- Remove the vibration motor from the other side of the controller using the same method previously described.
- ⓘ The right motor has significantly more counterweight than the left motor.

To reassemble your device, follow these instructions in reverse order.