



Xbox 360 Wireless Speed Wheel Left and Right Triggers Replacement

This guide will show how to replace the left and right triggers on the back of the Xbox 360 Wireless Speed Wheel

Written By: ines said



INTRODUCTION

Similar to the buttons, triggers can break during hardcore gaming or could lose functionality due to sticky and gooey substances (eg. food). In this guide, you will learn how to replace the left and right triggers of the controller. This guide involves opening the controller.



TOOLS:

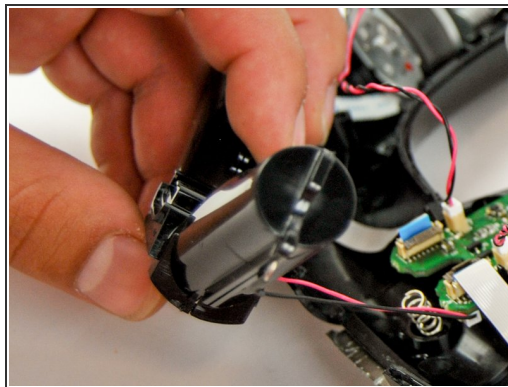
- [Spudger](#) (1)
 - [T8 Torx Screwdriver](#) (1)
 - [T9 Torx Screwdriver](#) (1)
 - [T6 Torx Screwdriver](#) (1)
 - [Tweezers](#) (1)
-

Step 1 — Battery



- Turn the controller on its backside and push the "eject" button to discharge the battery compartment door on the bottom of the controller.
- Pull the two AA batteries out.

Step 2 — Battery Compartment



- Lift the battery compartment out of the controller and set it outside of the controller.
 - ⚠ Do not yank, stress, or pull on the wires for removal.
- Use the precision tweezers to pull out the red and black wire attached to the white plug at the bottom side of the circuit board.

Step 3 — Back Panel



- Remove the holographic Microsoft sticker with the precision tweezers to reveal a small screw.
- Use a T6 Torx screwdriver to remove the 1.5mm screw.

Step 4



- Insert a spudger and pry at these three locations to detach the middle cover.
- Pull off the middle piece cover to reveal three screws.
- Use a T8 Torx screwdriver to remove the three 2.3mm screws.
- Remove the cover.

Step 5



- Remove the two 90mm screws with a T8 Torx screwdriver.
- Lift up the silver middle piece to remove.


Step 6



- Use a spudger to remove the silver prong.
- With the spudger, pinch the metal spring and slowly pull up to remove.
 - Use the spudger to remove eject button.
- Remove the screw holding in the eject button with a T8 Torx screwdriver.

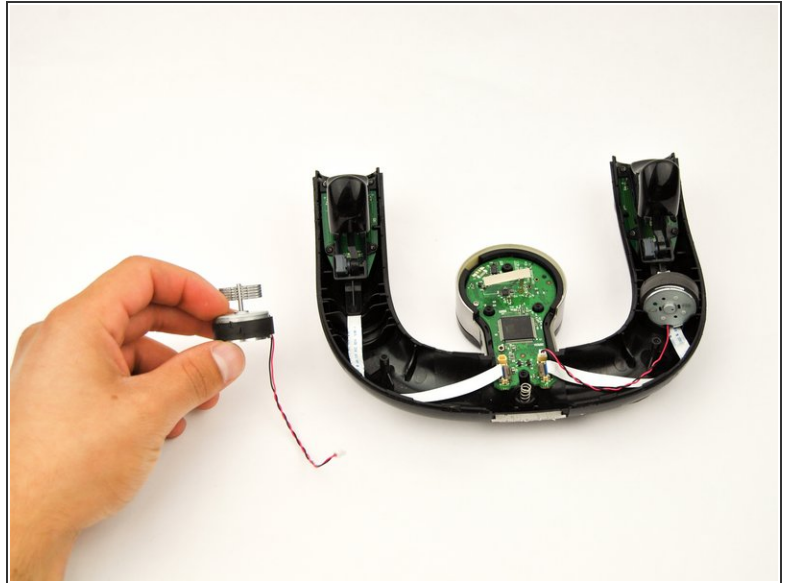
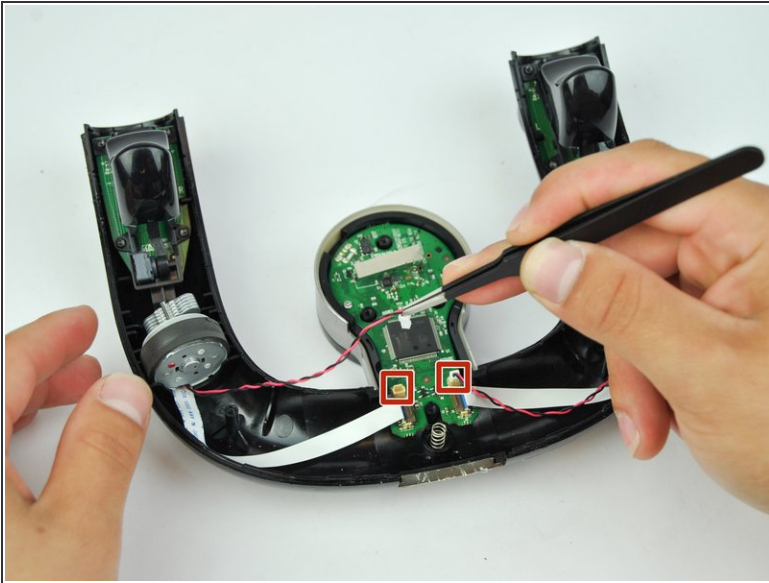
Step 7



 This step is very difficult and may require a third hand.

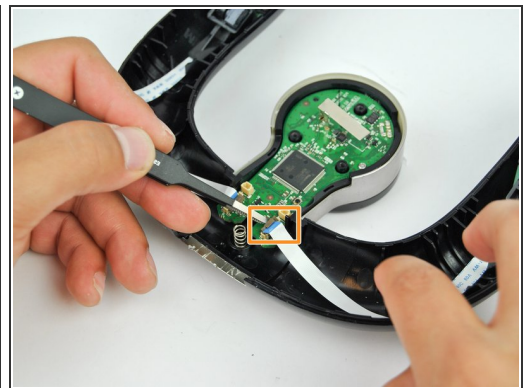
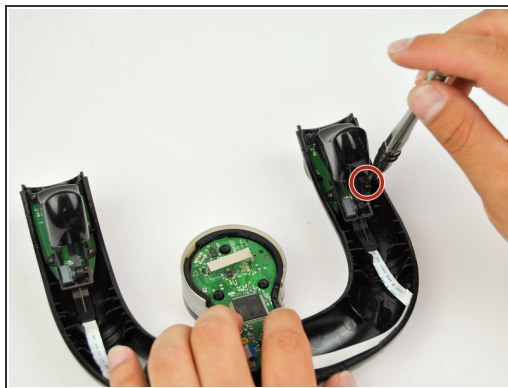
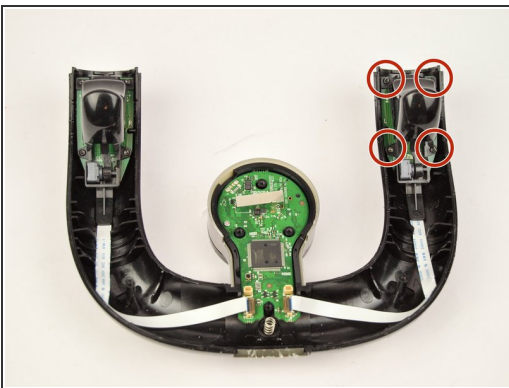
- Pull the two halves apart at the bottom to detach the two latches that are holding the front and back panels together.
- Start with one side of the controller (left or right).
- Slide the spudger towards the end of the handles and pry the two halves apart. Do the same for the opposite side.
- ⓘ The white circular caps at the top of the controller will pop off by applying light force.
- Pull the front and back panels apart to separate them and expose the inside of the controller.

Step 8 — Rumble Motor



- Use precision tweezers to remove the red and black wires that are attached to the circuit board.
- ⓘ The rumble motors will easily lift out of the controller once the wires are detached.

Step 9 — Left and Right Triggers



- Use a T6 Torx screwdriver to remove the four 2.3mm screws.
- Lift up the black locking tab on the ZIF connector to release the ribbon cable.

Step 10



- Lift up the trigger to remove it from the controller.
- ⓘ The trigger is made up of three pieces: the trigger, a circuit board, and a ribbon cable.
- Repeat for the other trigger.

To reassemble your device, follow these instructions in reverse order.