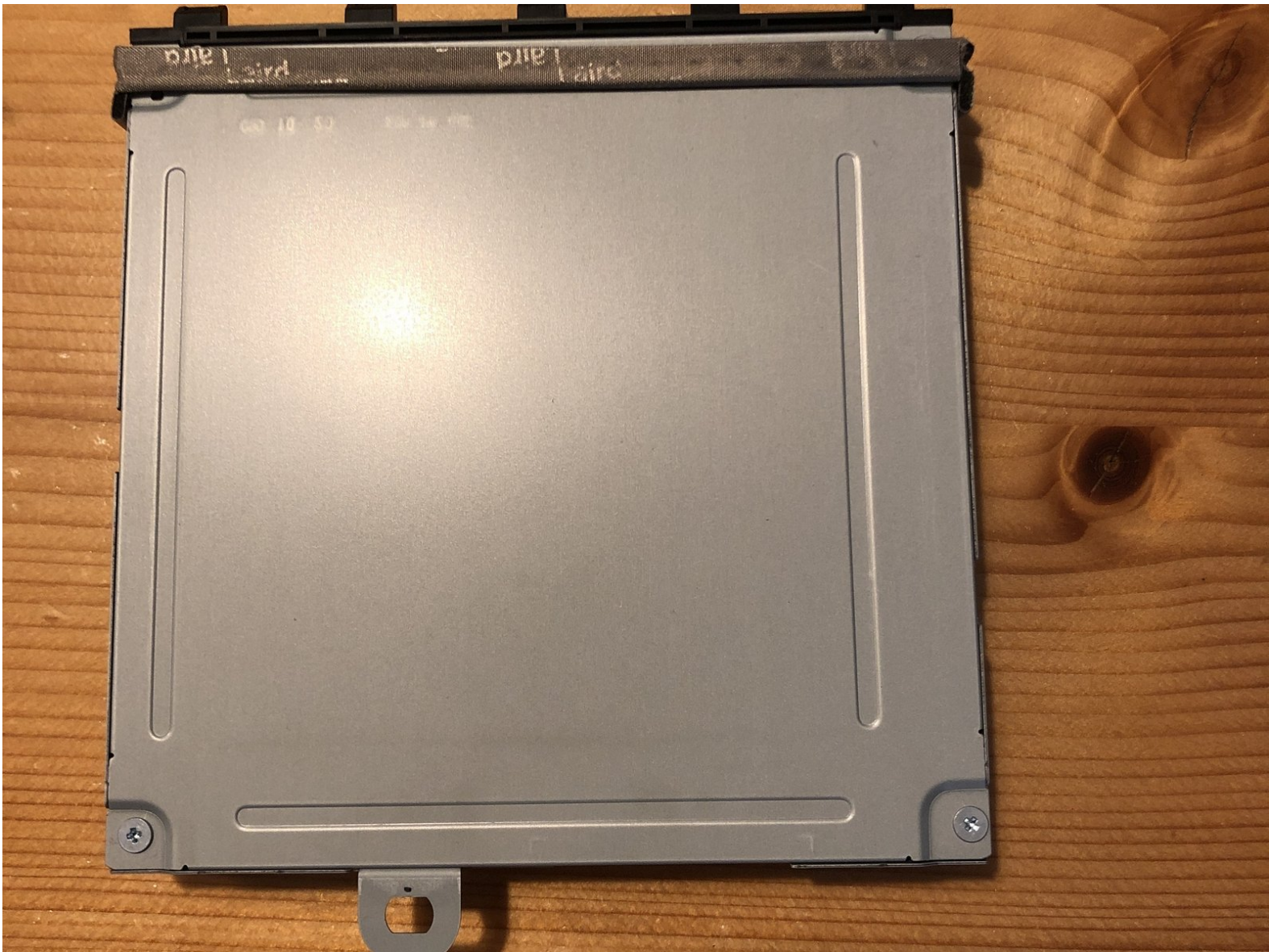




Xbox One Drive PCB Replacement

I'll explain in this guide how to replace the drive it's PCB.

Written By: koppie007



INTRODUCTION

Hi Guys,

In this guide I'll explain how to replace the Blu-ray drive it's PCB. This is required when you swap your motherboard.



TOOLS:

- [Soldering Workstation](#) (1)
- [Tweezers](#) (1)
- [Solder](#) (1)
- [Phillips #1 Screwdriver](#) (1)



PARTS:

- [Xbox One Motherboard and Paired Optical Drive](#) (1)

Step 1 — Remove the tape



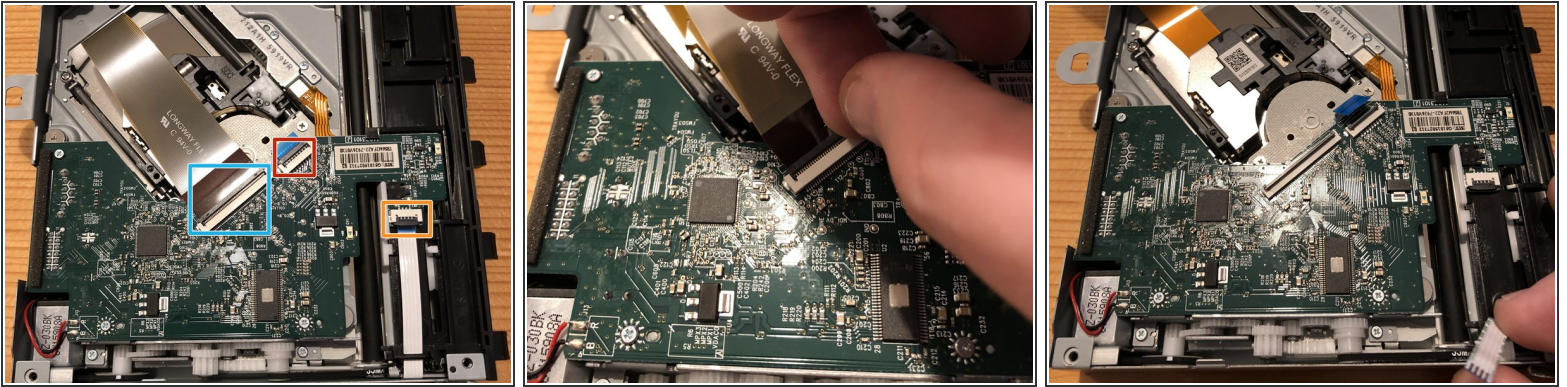
- First of all, remove the sticker/tape from the back of the drive to reveal the 2 other screws. You can do this with your fingers, it could take a little force, but not to much.

Step 2 — Remove the screws and back cover



- Remove the 4 PH1 screws.
- Lift up the back cover and remove it. It should not take any force and should come off easily. I lifted it up at the left side.

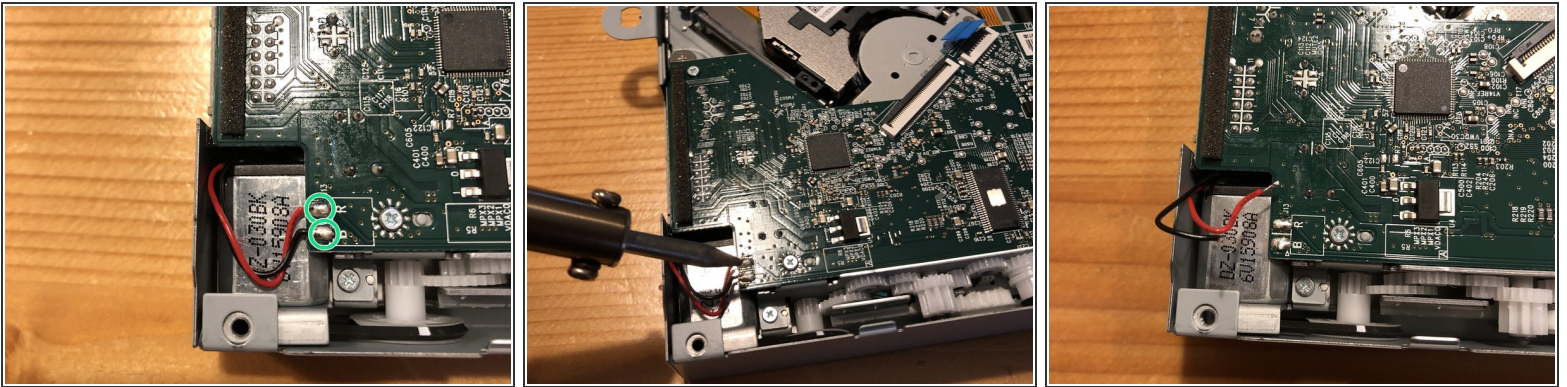
Step 3 — Remove the ribbon cables



⚠ Do NOT remove the ribbon cables yet, make sure you opened up the ZIF connector first and then remove the ribbon cables. Otherwise you could damage the PCB.

- Open up all the 3 ZIF connectors with your finger nails or with an plastic opening tool carefully.
- Then remove the 3 ribbon cables from their sockets.

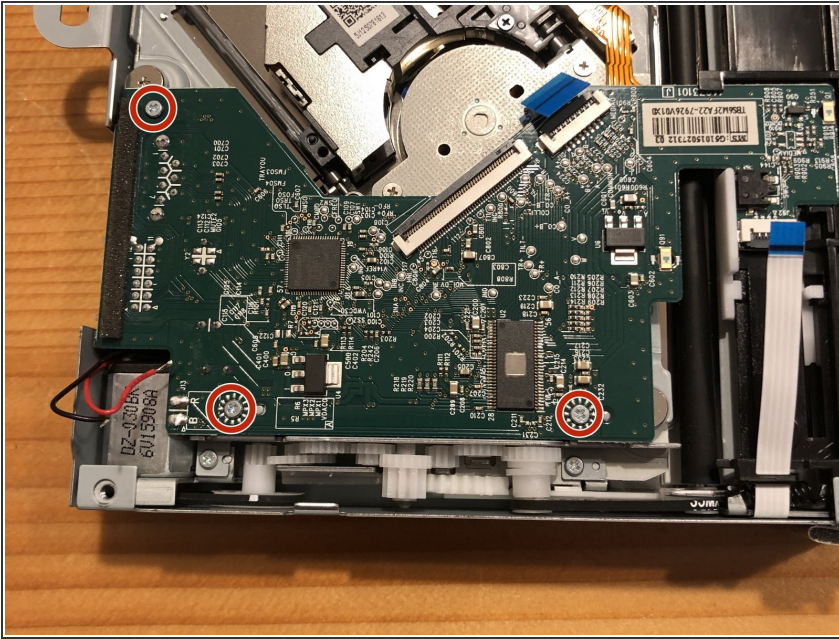
Step 4 — Desolder the cables



- You will see an red and an black cable soldered to the PCB.
- Now get your solder iron ready to desolder the 2 cables. Heat and melt the solder, with your other hand hold the tweezer. When the solder is melting, remove the cable with your tweezer to get the cable out.
- i** It's recommended you use desoldering wick, so you can put some fresh new solder on the pads. Recommended but not required.
- Now it should look like the last photo.

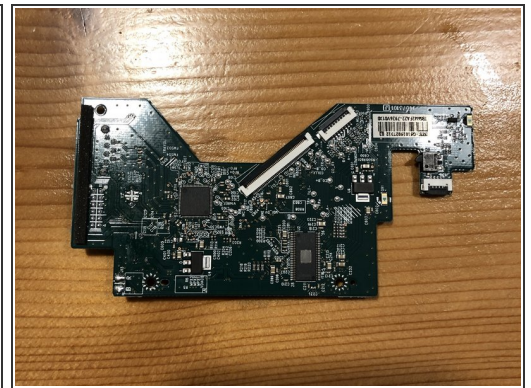
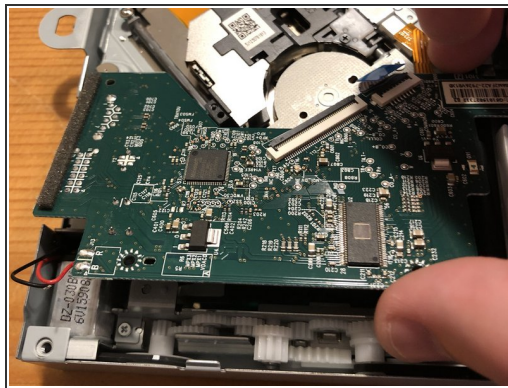
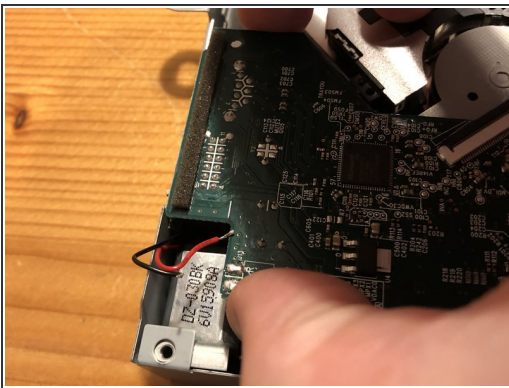
This document was generated on 2019-10-17 10:55:20 PM (MST).

Step 5 — Remove the screws



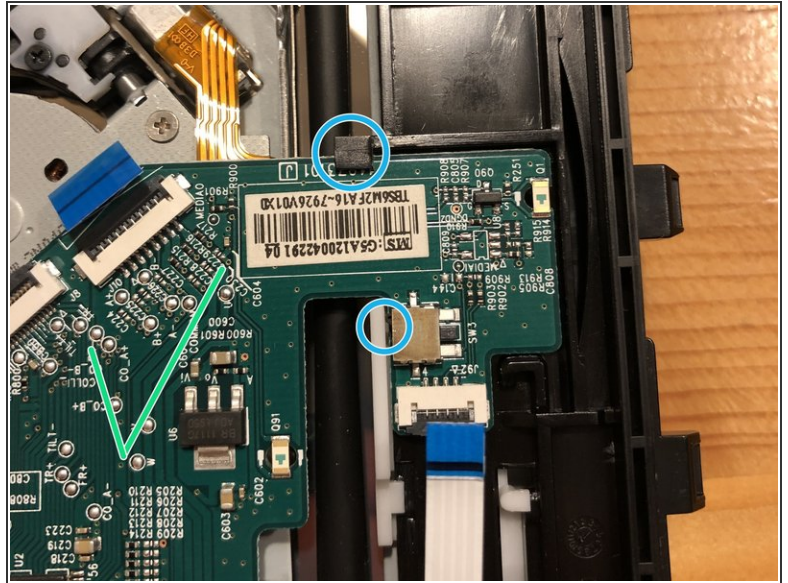
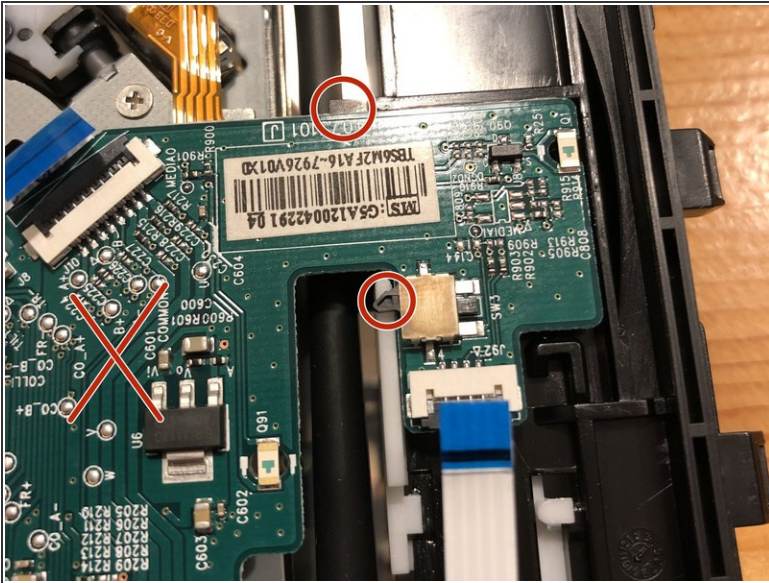
- Remove the tiny 3 PH1 screws from the PCB.

Step 6 — Remove the PCB from the drive



- Hold the PCB and move it up. You should notice that PCB will come loose from the drive.
- Now hold in the middle and move it upward a little and the back to yourself. Be aware that it will need a little force (**especially from the right side, as a clip is holding it down**), but it should come off easily.
- That's it! You got the PCB out!

Step 7 — Installing the new PCB



⚠ When installing the new PCB, look out for the spots as shown in Photo 1 (red circles). When you follow photo 1 and tight it with screws, you could break the PCB ! So do the opposite of Photo 1!

- Photo 2 shows correctly how the PCB need to be seated. As you can see in the blue circles.

To reassemble your device, follow these instructions in reverse order.

Hopefully this guide helped you to replace the PCB!