



Xbox One Elite Controller (Model 1698)

Disassembly

Completely take apart the Xbox Elite Controller

Written By: EasyAsABC123

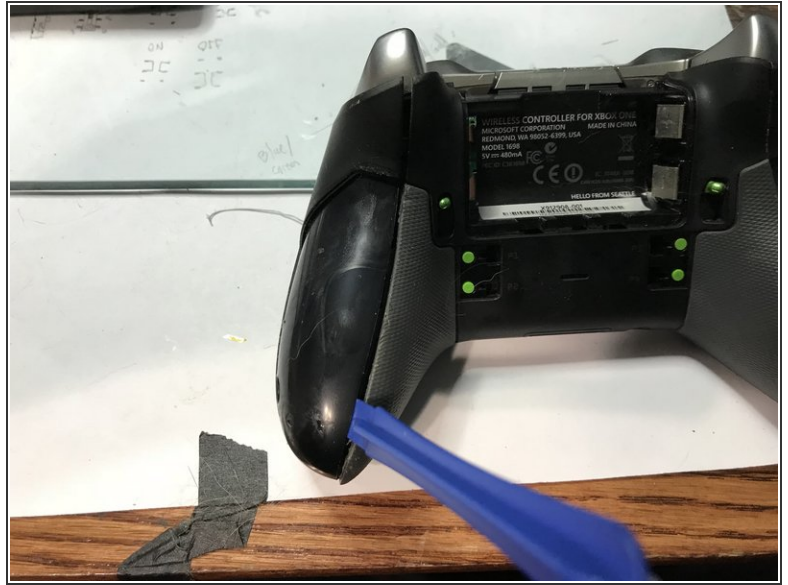




TOOLS:

- [Soldering Iron](#) (1)
- [iFixit Opening Tools](#) (1)
- [T6 Torx Screwdriver](#) (1)
- [T8 Torx Screwdriver](#) (1)

Step 1 — Show me the Screws!



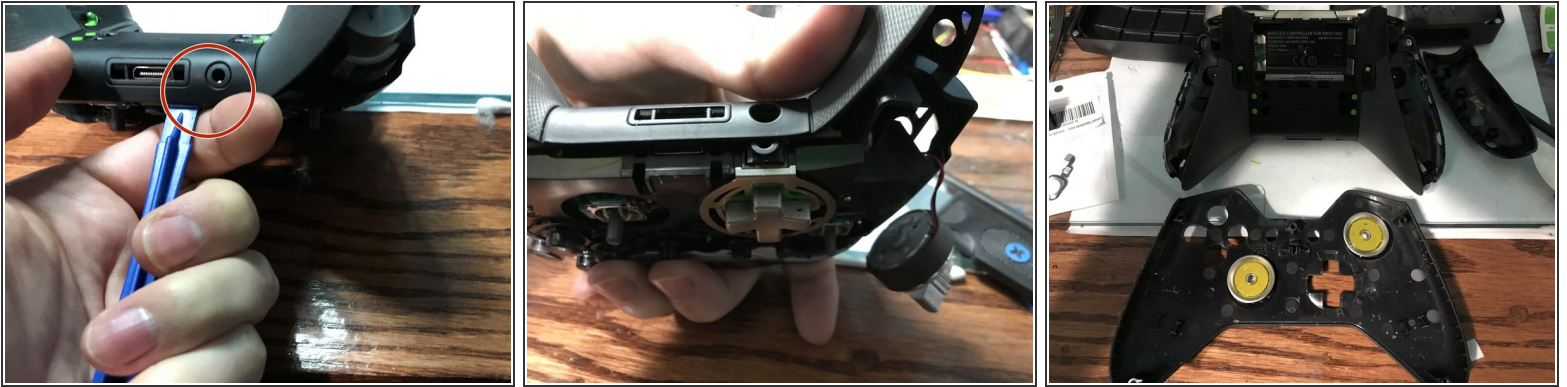
- You can remove the side panels with a pry tool.
- ❗ You don't need to remove the rubber. The rubber on this controller was already bad

Step 2 — Removing the back panel screws



- Remove the 5 Torx Security Bit (TR8) screws

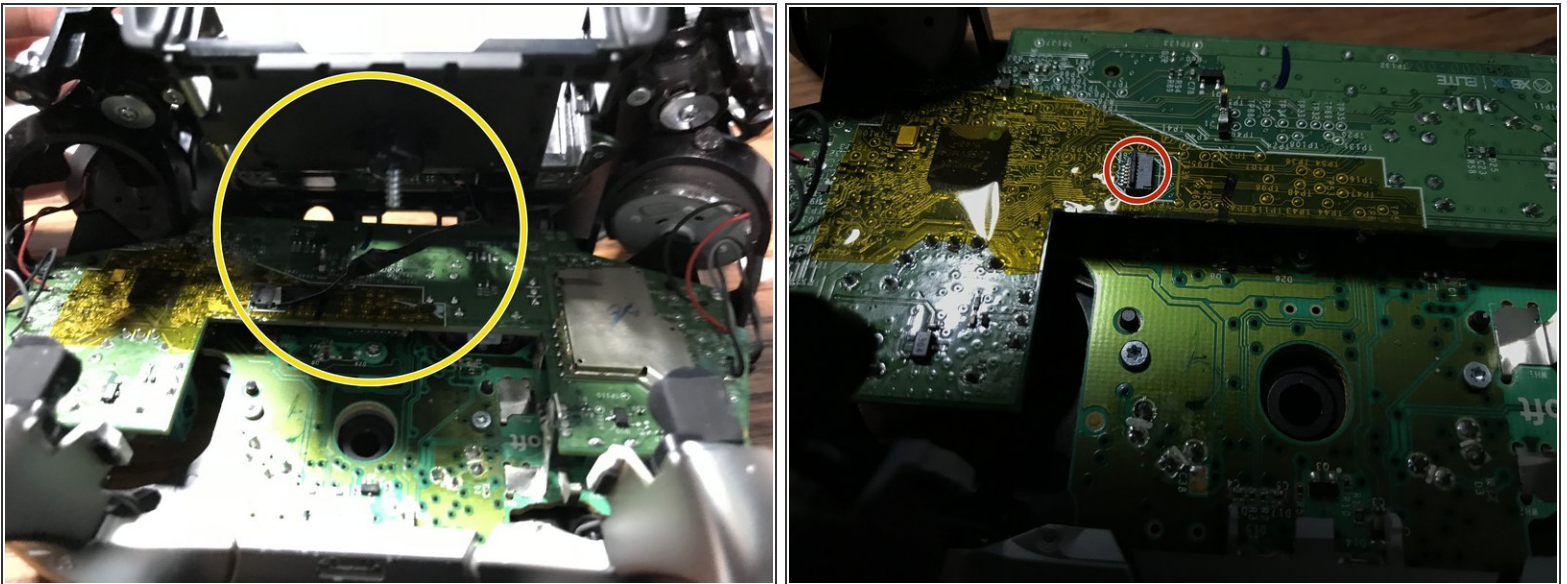
Step 3 — Popping that back panel off



- Pry the panel next to the 3.5mm port

⚠ Be careful to not rip the ribbon shown in the next step

Step 4 — Warning Carefully remove the ribbon



⚠ Be careful to not rip the ribbon cable

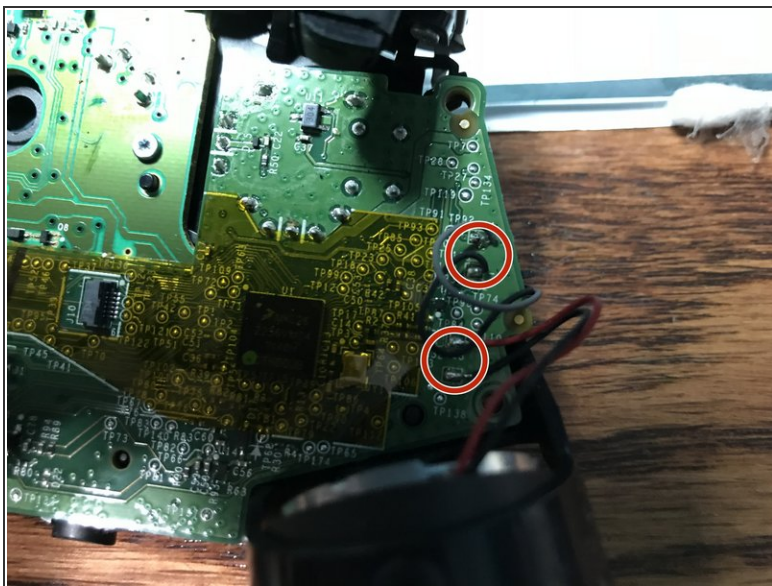
- You can pop the connector up to remove the ribbon easily
- Ribbon Cable

Step 5 — Screws on controller motherboard



- Remove the 2 Torx (T6) screws

Step 6 — Desolder wires from motherboard



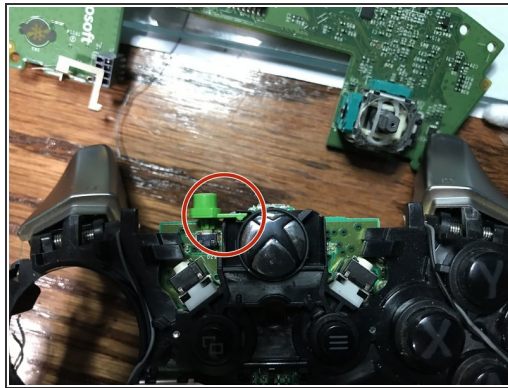
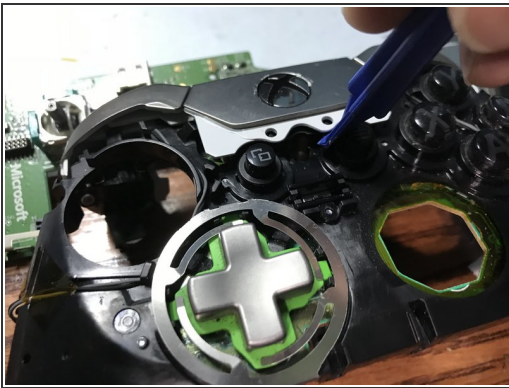
- Desolder the 4 wires on each side, these control the vibrations and the RT LT

Step 7 — Remove the motherboard




- Pull up from the "top" side of the controller on the sister board.

Step 8 — Remove the Home Button Cover



Be Careful to not lose the sync button

- Pry the middle section up from the home button side.
-  This will also remove the LB and RB which is a single part

Step 9 — Remove the controller daughterboard



- Unscrew the 6 Torx (T6) screws

Step 10 — Xbox One Elite Controller (Model 1698) Disassembly



- Now you can remove the buttons themselves.

To reassemble your device, follow these instructions in reverse order.