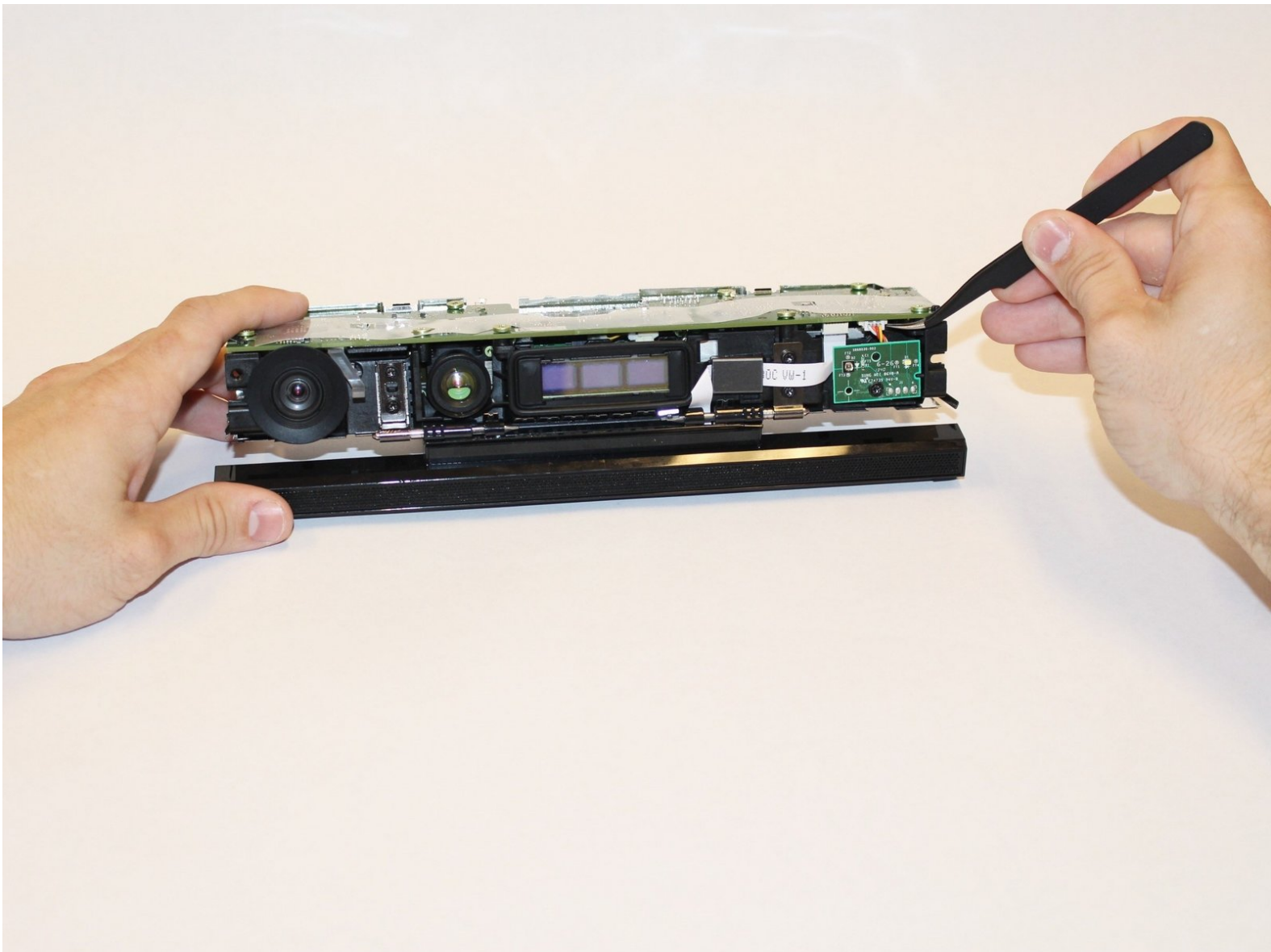




Xbox One Kinect LED Sensor Replacement

With this guide you will be able to replace your LED Sensor.

Written By: Malak Anshassi



INTRODUCTION

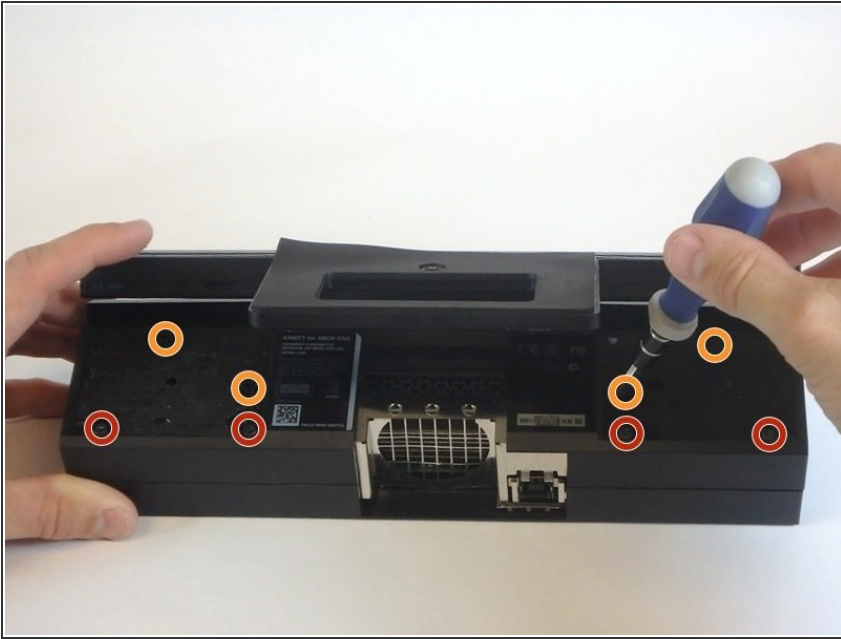
The LED sensor lights up when the sensor is connected. If the LED is unlit, the sensor module itself may be at fault.



TOOLS:

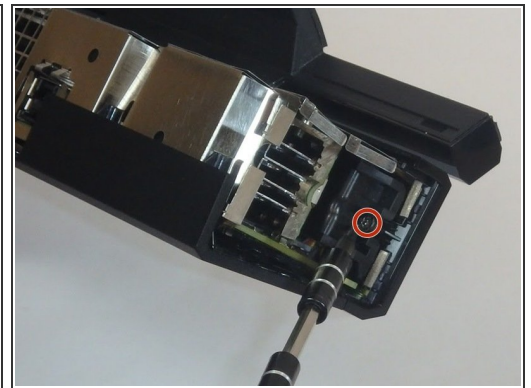
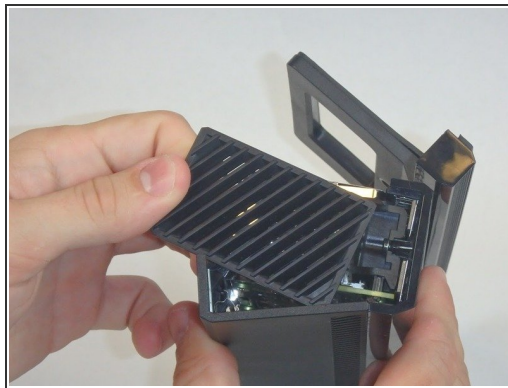
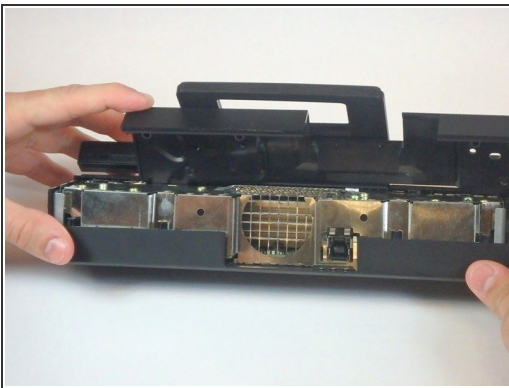
- [T9 Torx Screwdriver](#) (1)
 - [Spudger](#) (1)
 - [Tweezers](#) (1)
-

Step 1 — Outer Shell



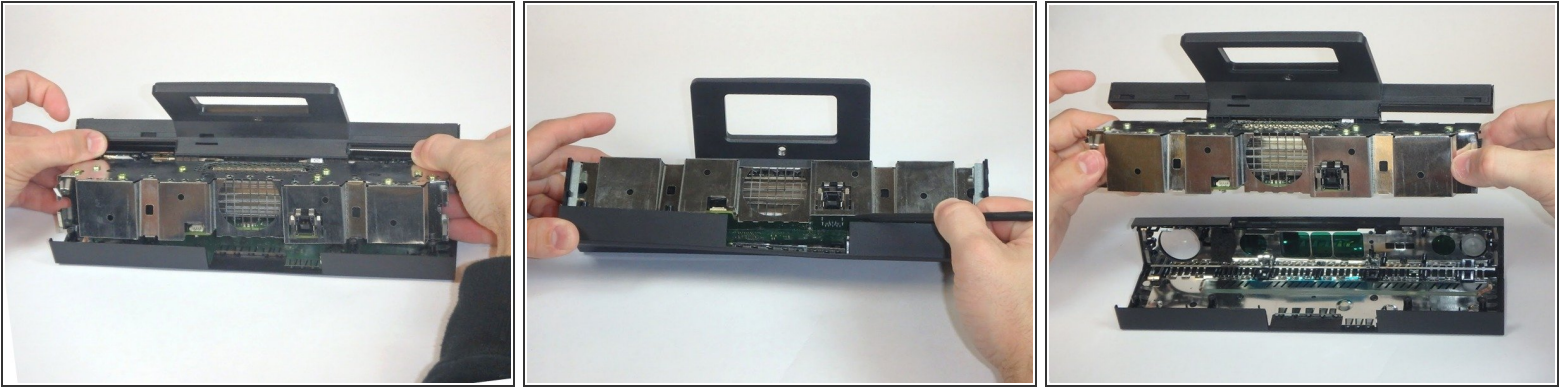
- Remove the sticker on the underside of the device.
- Remove the four 3.1x7.7 mm T9 screws underneath the sticker.
- While you're at it, remove the four 3.1x23.6 mm T9 screws beneath the sticker. Make note of the sizes and locations of the screws.

Step 2



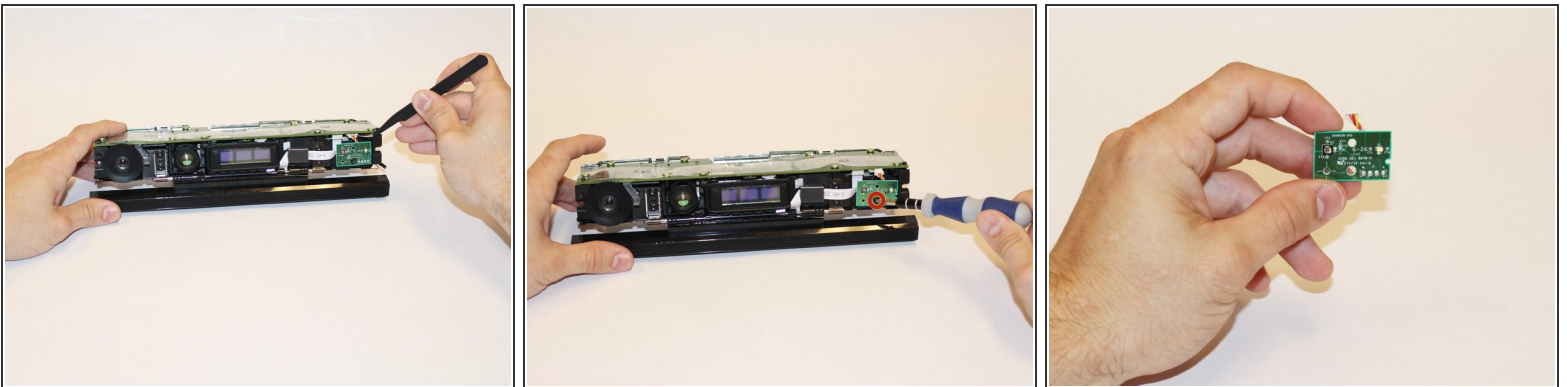
- Remove the back panel.
- Remove the black panels on either side of the Kinect, and remove the 3.1x7.7 mm T9 screws underneath them.

Step 3



- Using your thumbs, press firmly against the outer case on either side of the stand. This will disengage the internal assembly.
- Lift the internal assembly with the spudger.
- Remove the assembly from the case. You now have access to the inner shell of the kinect, along with the heat sink, microphone, and LED sensor.

Step 4 — Removing the LED Sensor



- Disconnect the ribbon cable between the sensor driver board and the motherboard.
- Remove the 3.0x7.5 mm T9 screw holding the sensor driver board to the heat sink.
- Remove the infrared sensor board for the Kinect.

To reassemble your device, follow these instructions in reverse order.

