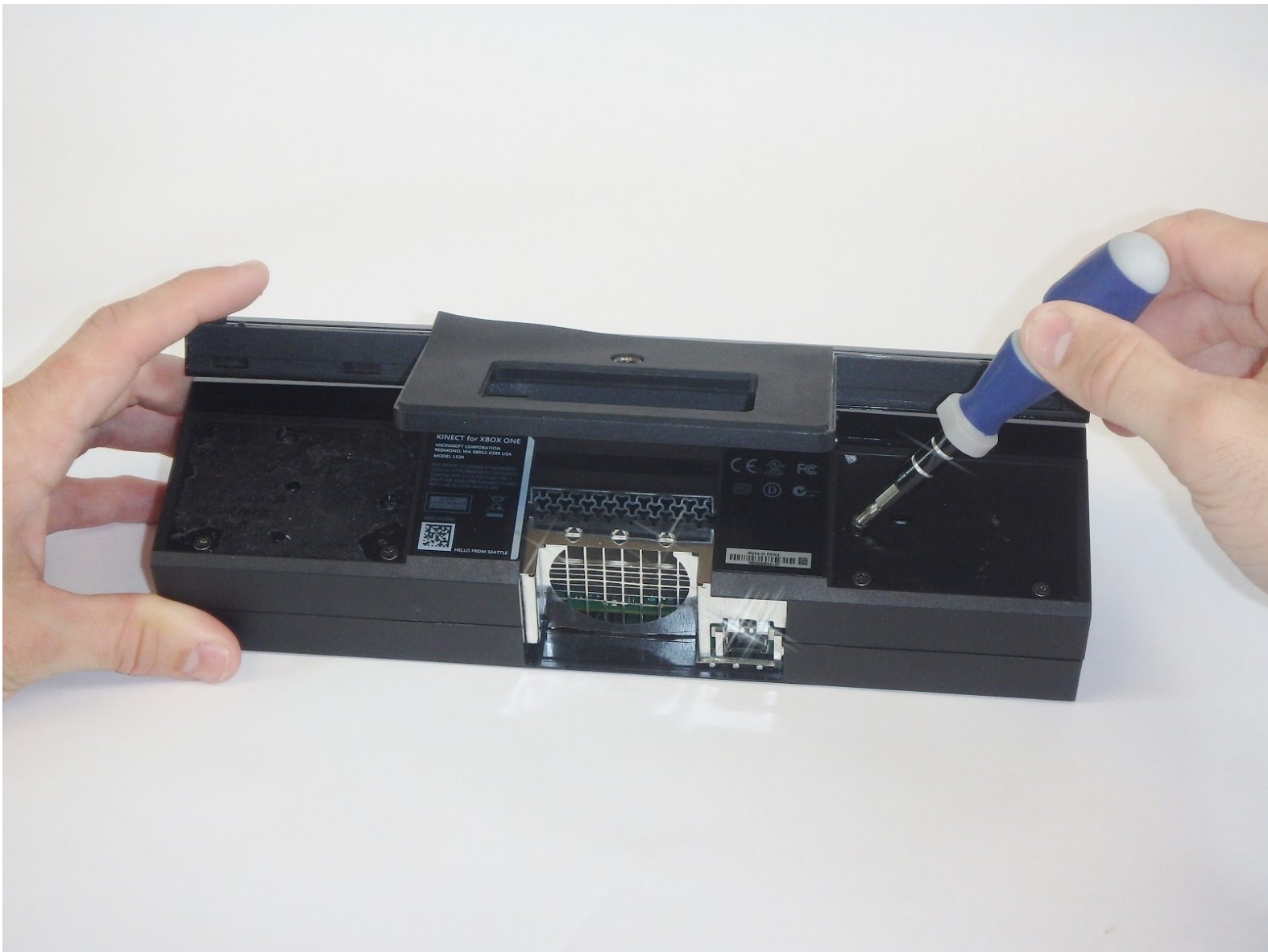




# Xbox One Kinect Microphone Replacement

This is a guide on how to replace the microphone on an Xbox One Kinect. WARNING this will void your warranty with Microsoft.

Written By: Charles Schoonover



## INTRODUCTION

The microphone is inside of the stand of the Kinect, and the stand is not able to be taken apart. You will need to find another Kinect with a working microphone to salvage a stand to replace the broken one.



### TOOLS:

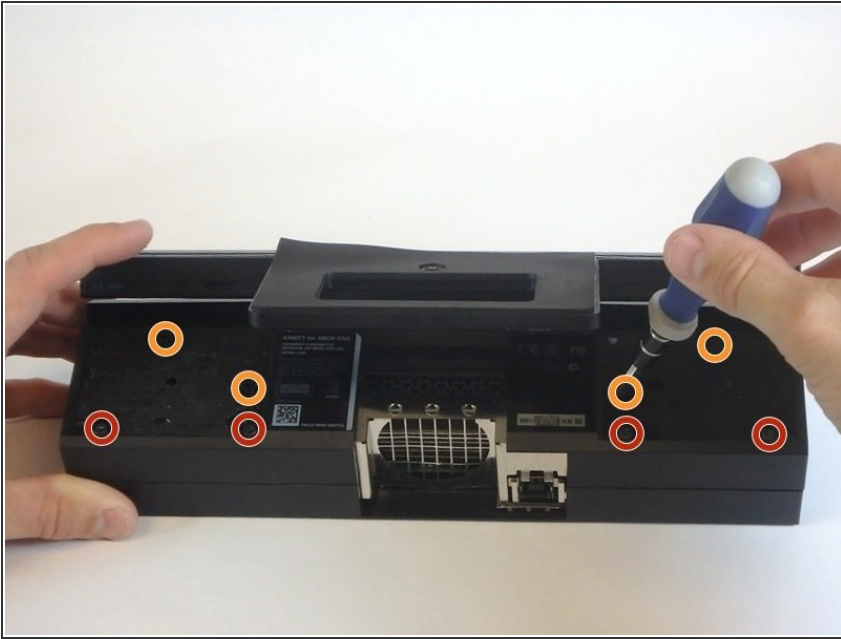
- [Tweezers](#) (1)
- [T9 Torx Screwdriver](#) (1)
- [Spudger](#) (1)



### PARTS:

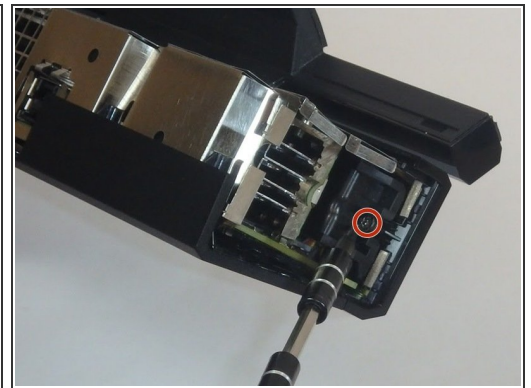
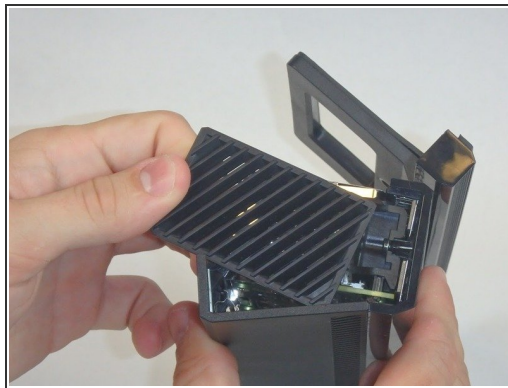
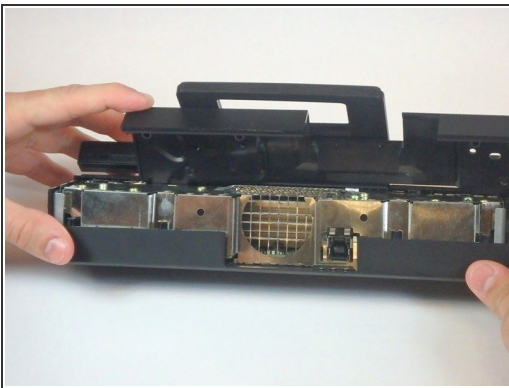
- [Working Xbox One Kinect stand](#) (1)

## Step 1 — Outer Shell



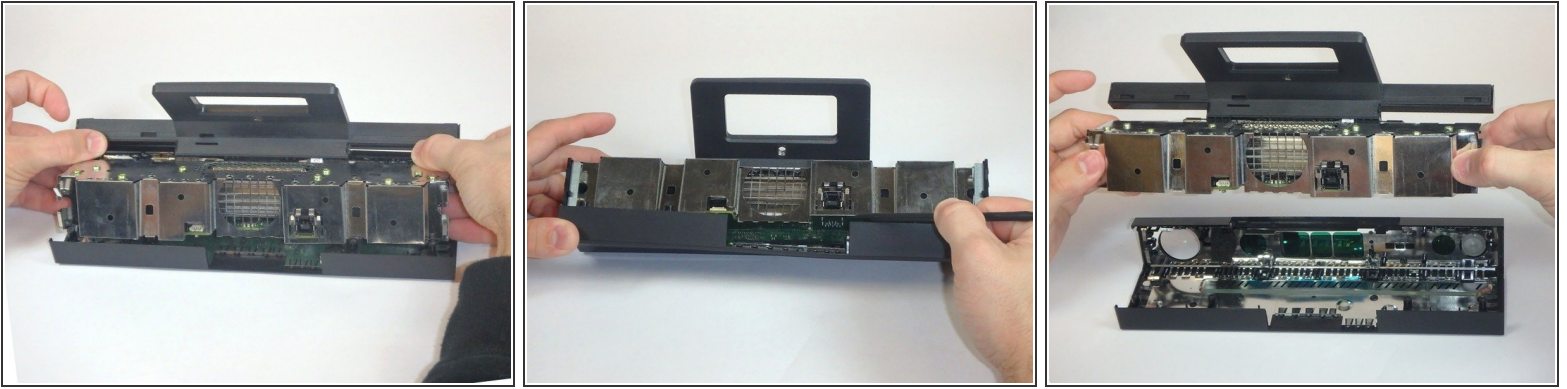
- Remove the sticker on the underside of the device.
- Remove the four 3.1x7.7 mm T9 screws underneath the sticker.
- While you're at it, remove the four 3.1x23.6 mm T9 screws beneath the sticker. Make note of the sizes and locations of the screws.

## Step 2



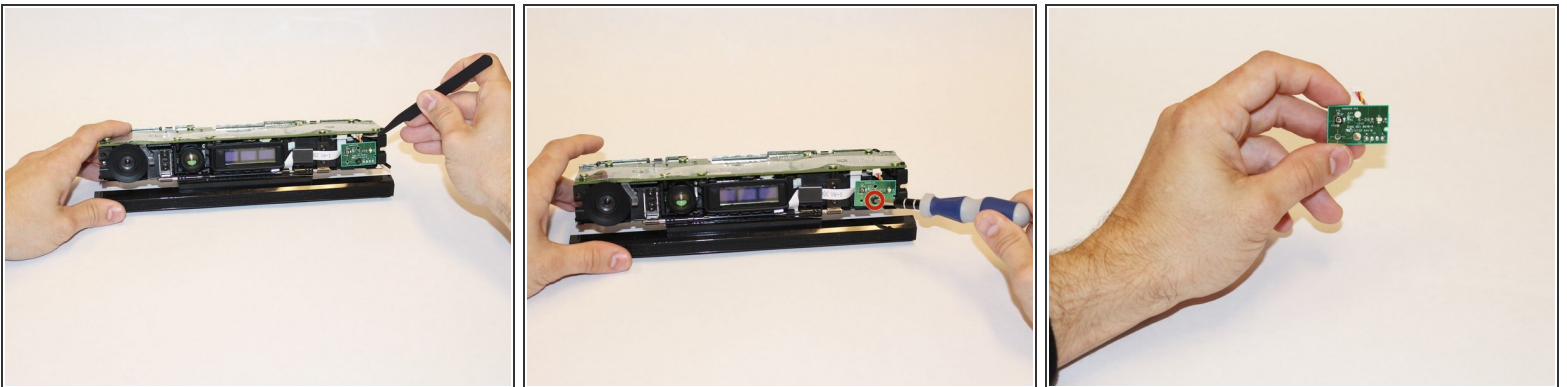
- Remove the back panel.
- Remove the black panels on either side of the Kinect, and remove the 3.1x7.7 mm T9 screws underneath them.

### Step 3



- Using your thumbs, press firmly against the outer case on either side of the stand. This will disengage the internal assembly.
- Lift the internal assembly with the spudger.
- Remove the assembly from the case. You now have access to the inner shell of the kinect, along with the heat sink, microphone, and LED sensor.

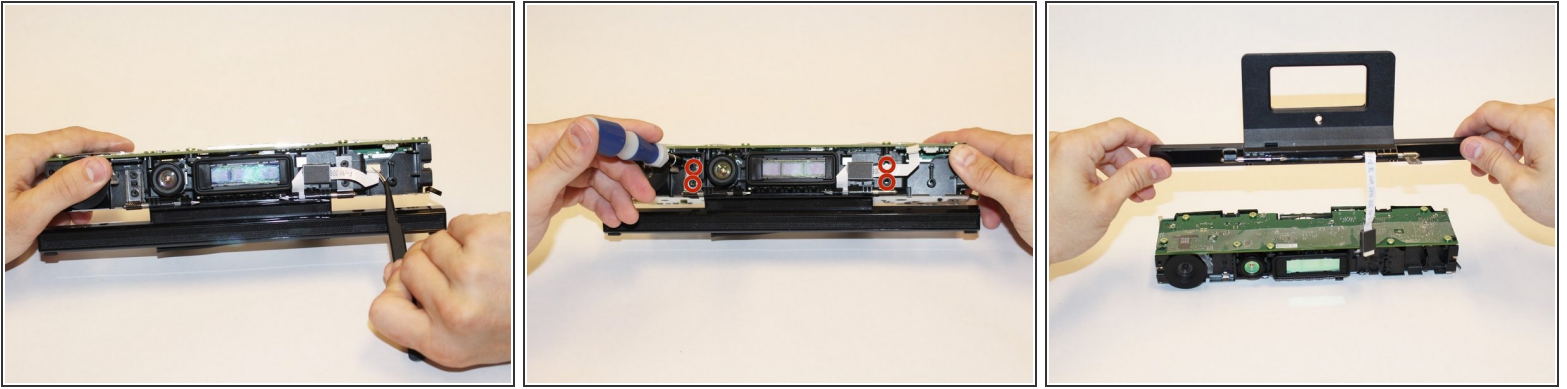
### Step 4 — Microphone



- Disconnect the cable connecting the infrared sensor to the motherboard.
- Remove the one 3.1x7.7 mm T9 screw from the infrared sensor.
- Remove the infrared sensor board for the Kinect.



## Step 5



- Remove the white ribbon cable from the motherboard using tweezers.
- Remove the four 3.1x7.7 mm T9 screws holding the stand containing the microphone in place.
- Unstick the black bracket holding the ribbon cable with a spudger, and remove the stand from the body of the Kinect.
- Replace with a working stand from a different Xbox One Kinect.

To reassemble your device, follow these instructions in reverse order.