



Xbox One S All Digital Edition IR Blaster Replacement

If the power button on your console does not work, or if bluetooth devices do not pair with the Xbox, use this guide to fix the issue.

Written By: Jules Hajjar



INTRODUCTION

This replacement guide provides a step by step process on replacing the IR Blaster of The Xbox One S All Digital Edition (Model 1681). The IR Blaster is responsible for many of the consoles vital power functions. The IR Blaster contains the consoles power switch and manages the connection of Bluetooth accessories paired to the Xbox One S All Digital Edition. Symptoms of a broken IR Blaster are a malfunctioning power button or a faulty Bluetooth connection to Xbox accessories. Disconnect all cables prior to disassembly.



TOOLS:

- [iFixit Opening Tools](#) (1)
- [TR10 Torx Security Screwdriver](#) (1)
- [T8 Torx Security Bit Screwdriver](#) (1)



PARTS:

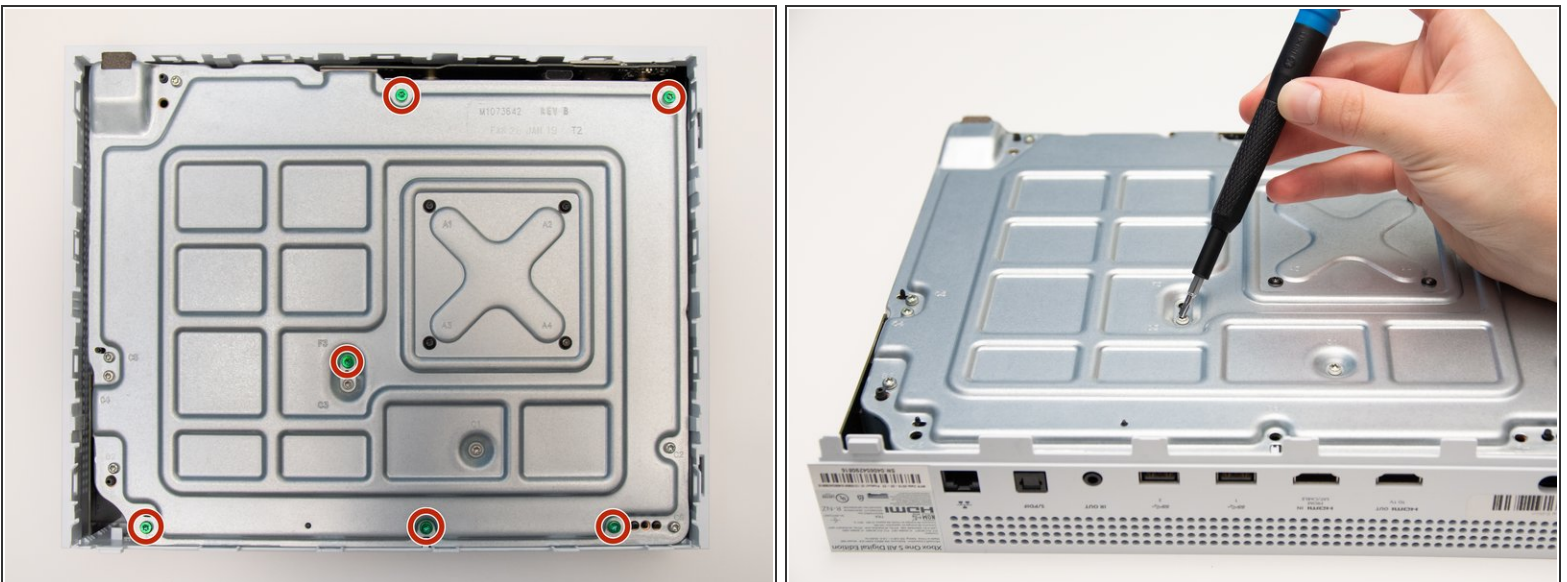
- [Xbox One S IR Blaster](#) (1)

Step 1 — Plastic Enclosure



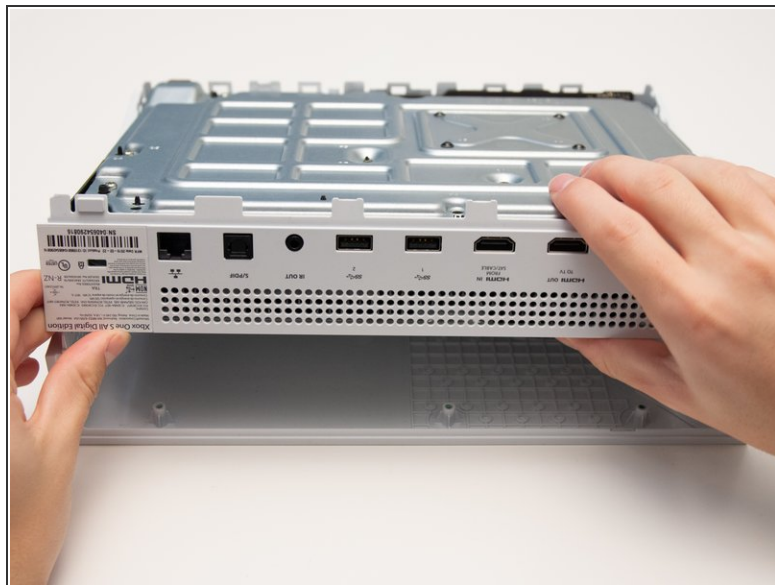
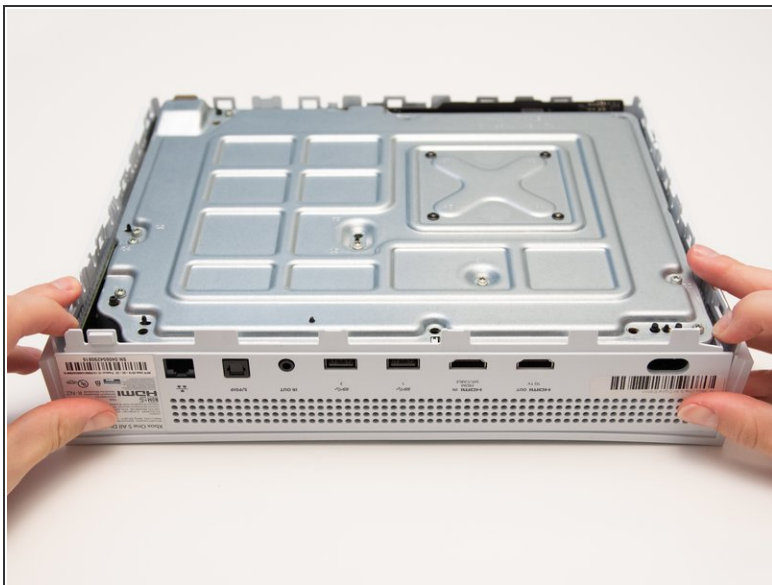
- Position the iFixit Opening Tool's riveted edge in between the top and bottom cover of the plastic enclosure.
- Apply downward pressure on the iFixit Opening Tool until the security clip unlocks.
- Repeat on different points of the plastic enclosure until the bottom cover is removed.

Step 2



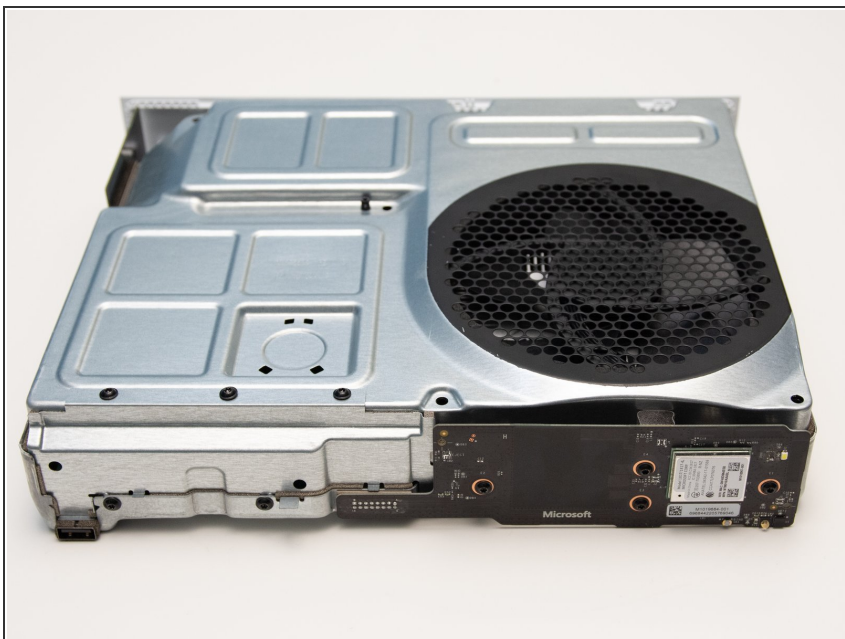
- Remove the six 50 mm green screws (labeled F1-F6) from the metal chassis using a Torx 10 screwdriver.
- ⓘ These screws hold the top cover of the plastic enclosure to the chassis.

Step 3



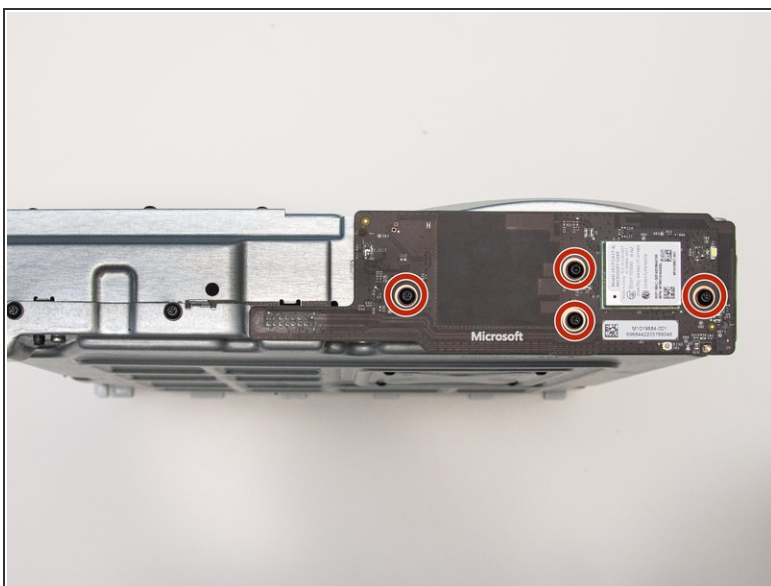
- Apply pressure to peel off the sides of the casing.
- Separate the metal chassis from the top cover, lifting the back of the chassis up and away from the top cover.
- ⓘ The plastic back panel is meant to stay attached to the metal chassis.

Step 4



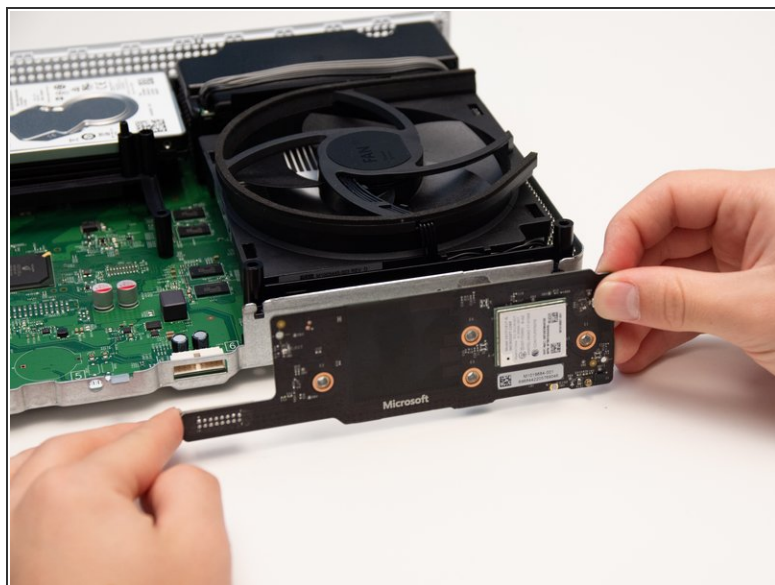
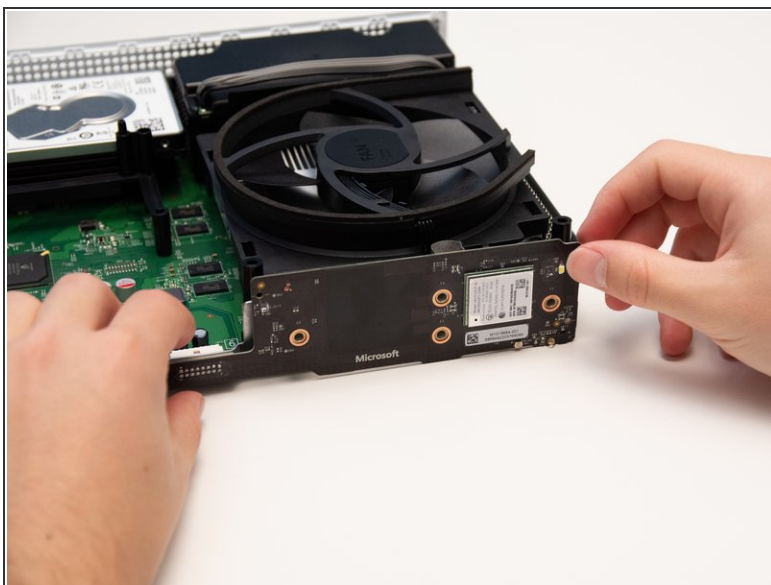
- Flip the metal enclosure so that the fan cover is on top.

Step 5 — IR Blaster



- Remove the four 15mm screws attaching the IR Blaster to the metal chassis with the Torx T8 Security screwdriver.

Step 6



- Carefully remove the IR Blaster from the metal chassis.



The connector is very fragile. Make sure you pull the board away from the case and not sideways.

To reassemble your device, follow these instructions in reverse order.