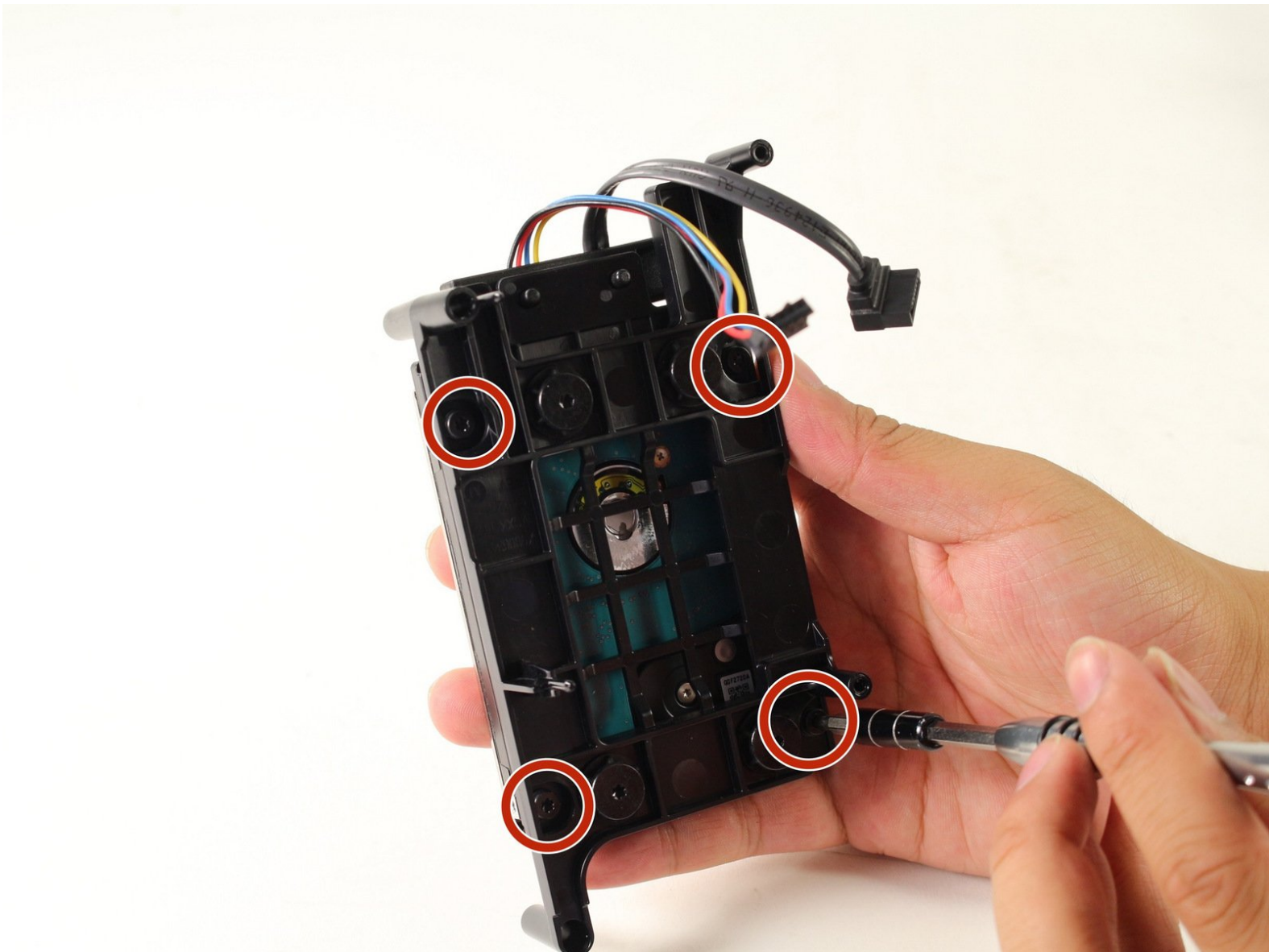




Xbox One S Hard Drive Replacement

This guide will show you how to remove and replace the hard drive on the Xbox One S.

Written By: Andrew



INTRODUCTION

If you want to replace the hard drive with one that has a larger capacity, this guide will teach you how to replace the hard drive step by step.



TOOLS:

- [iFixit Opening Tools](#) (1)
- [T10 Torx Screwdriver](#) (1)



PARTS:

- [Xbox One S Top Case](#) (1)
- [Xbox One S Bottom Panel](#) (1)
- [Xbox One S Chassis and Rear Panel](#) (1)
- [Xbox One S HDD](#) (1)
- [Xbox One S Hard Drive SATA Cable](#) (1)

Step 1 — Case



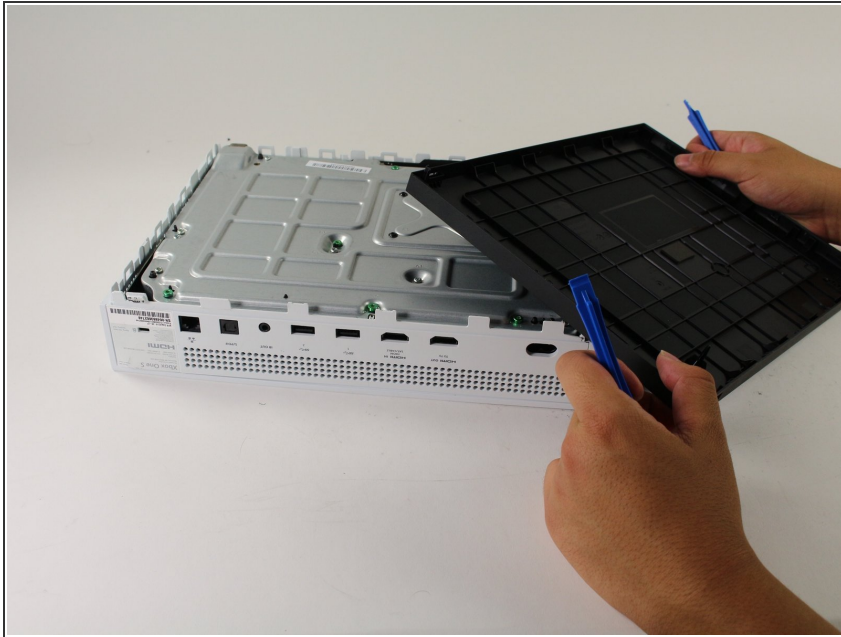
- Flip the Xbox One S so that the bottom of the case is facing upward.

Step 2



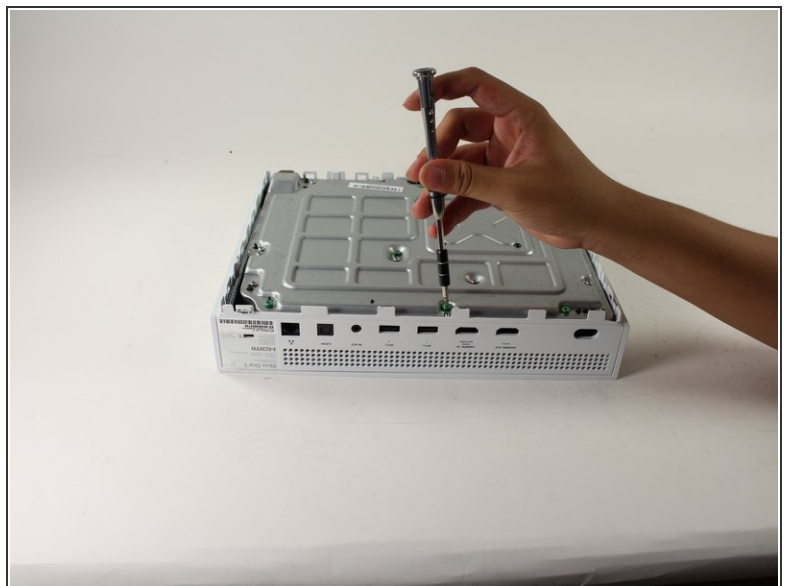
- Insert the plastic opening tool into the gap between the bottom of the case and the grated top side. Then find the clips in between that hold the case in place.
 - Use the opening tool to pop the clips out. The best method is to pry the black case away from the bottom.
 - ⓘ You will hear clicking sounds when you are prying the case open. It may be fairly difficult to remove the bottom.
- ⚠ It's possible that the clips may break when you remove the bottom from the case.
- ⓘ We recommend starting at one corner and sliding the prying tool along the edges of the Xbox One S. Once the first few clips are opened you can lift the cover up to find the remaining clips.

Step 3



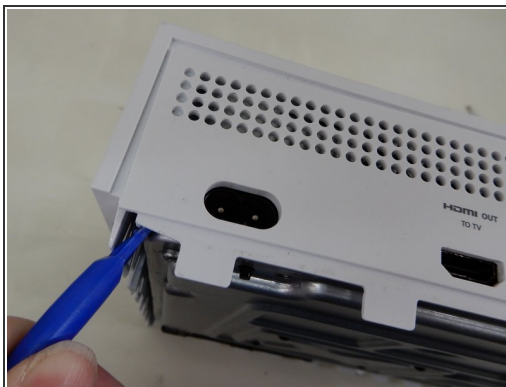
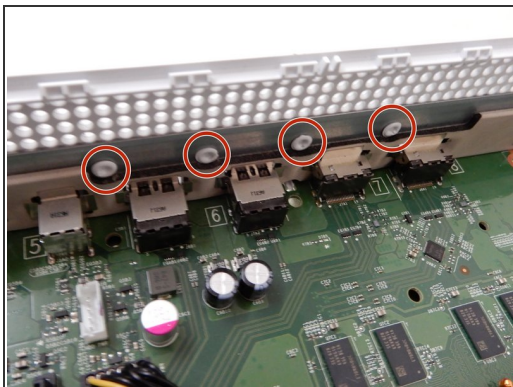
- Once all of the clips are opened, remove the bottom part of the case.

Step 4



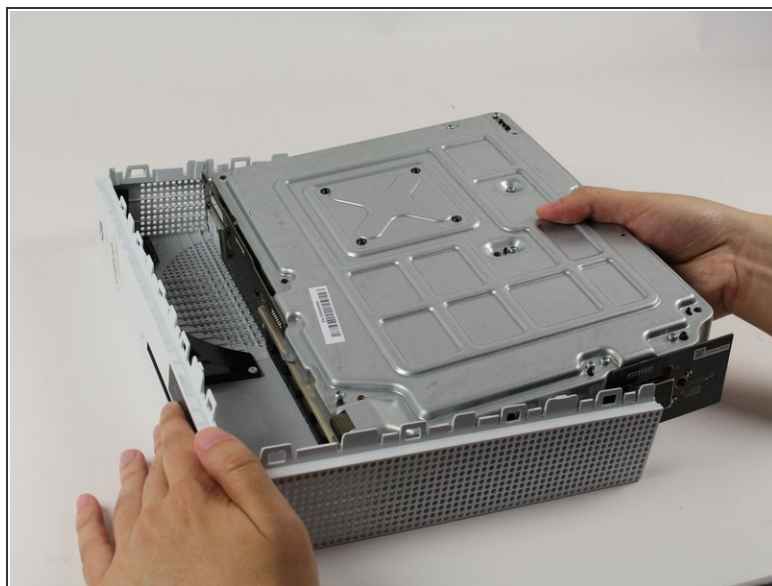
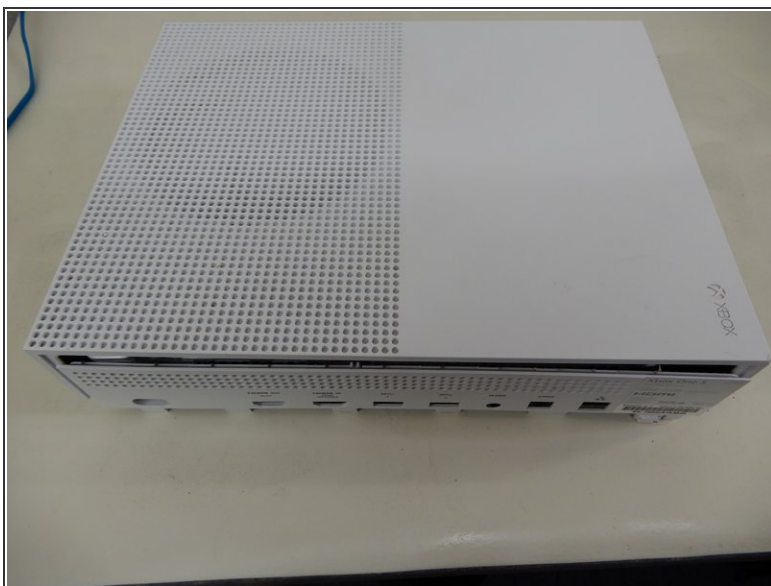
- Find all of the green screws on the metal case labeled F1 through F6.
- Take the T10 Torx screwdriver and remove the six 50 mm long screws.

Step 5



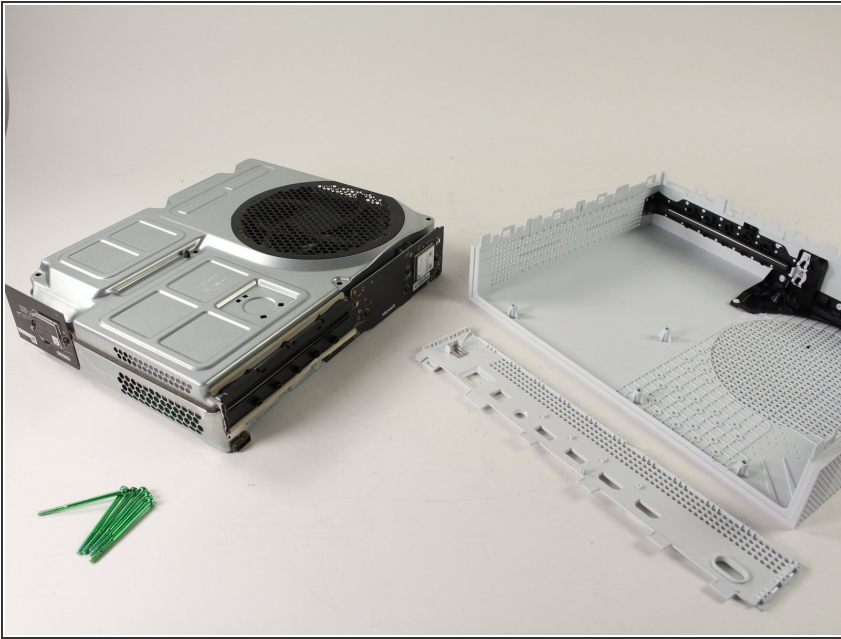
- The port cover is held in place with rivets. Insert a pry tool gently between the top cover and metal casing on both sides to prepare the cover for removal.

Step 6



- Gently separate the interior case from the white exterior case using the appropriate method.

Step 7 — Interior Case Top Panel



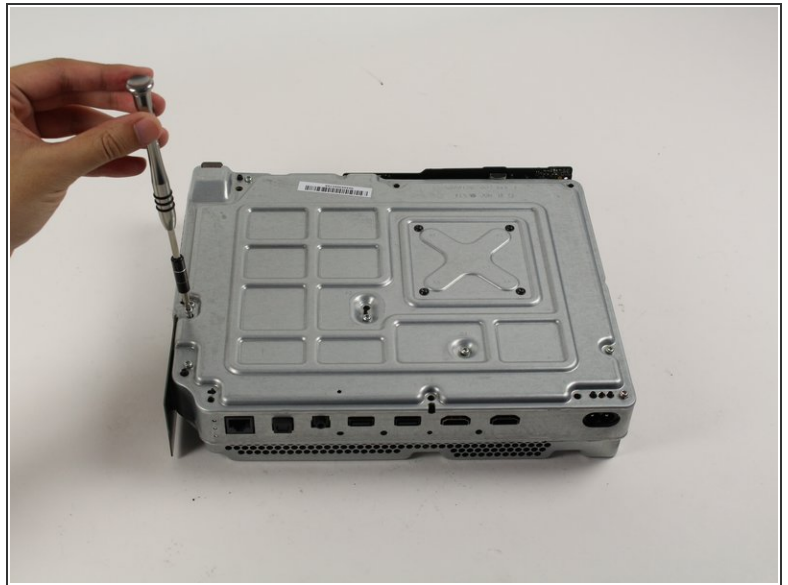
- Flip the interior case so it is fan side upward.

Step 8



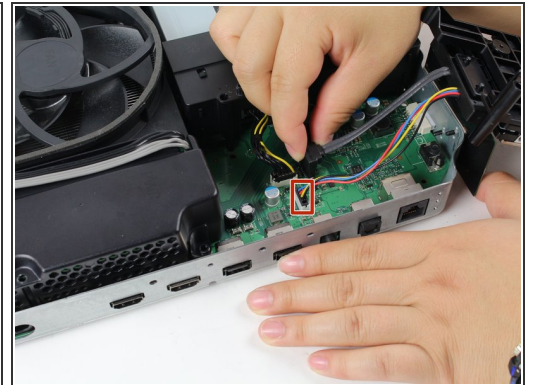
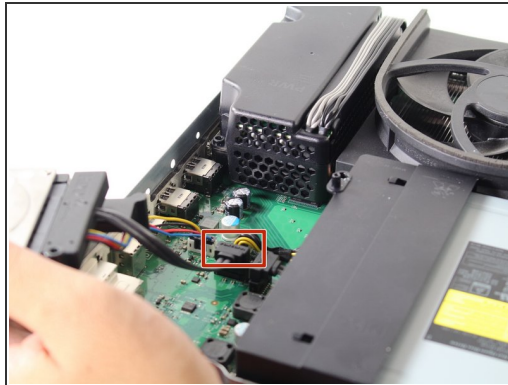
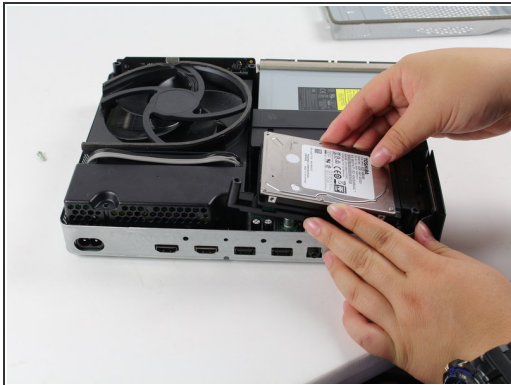
- Gently pop and lift the metal panel on top of the interior case to access the hardware. It should come right off.

Step 9 — Hard Drive Assembly



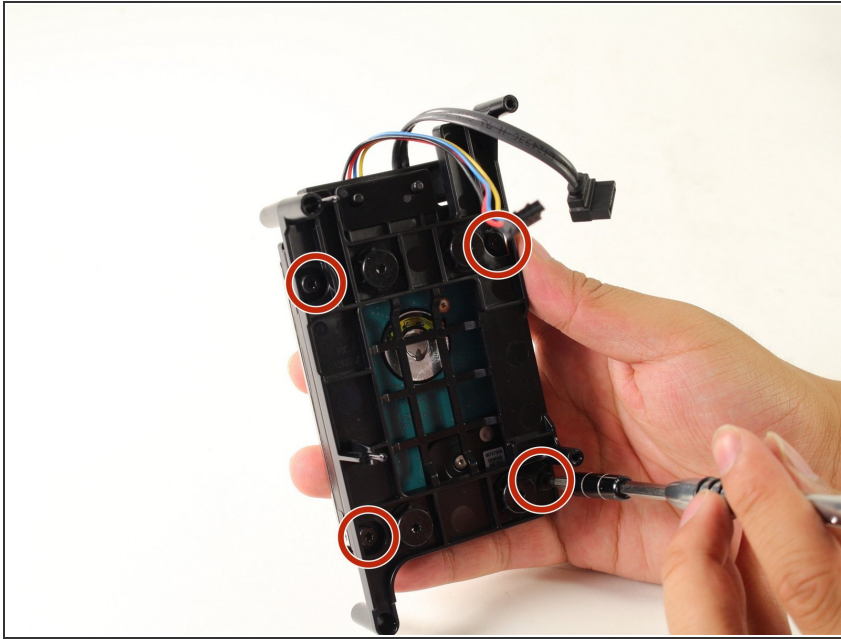
- To replace the hard drive, remove the two 10 mm T-10 Torx screws, C3 and C4, from the backside of the Xbox One S.

Step 10



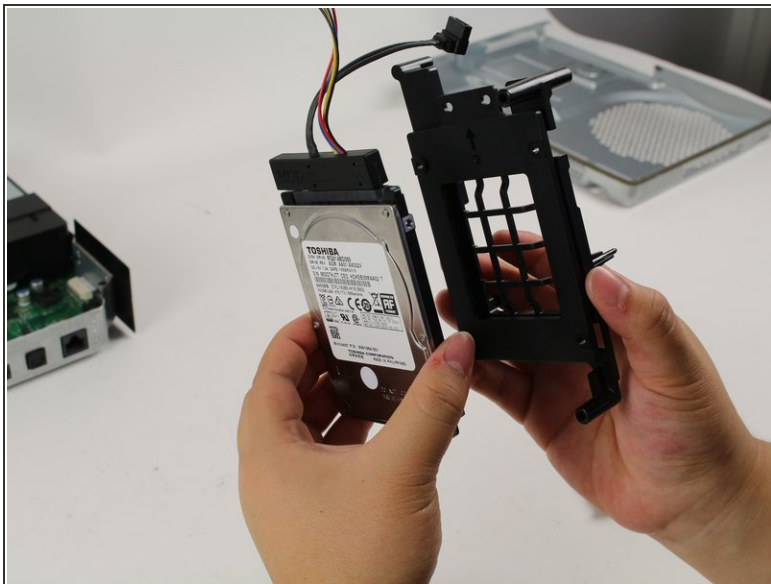
- Gently disconnect the hard drive from the motherboard (at the two plastic connector bodies).

Step 11 — Hard Drive



- Remove the four black 10mm T10 Torx screws from the black plastic mount.

Step 12



- Detach the black plastic mount and the wires from the hard drive.

To reassemble your device, follow these instructions in reverse order.