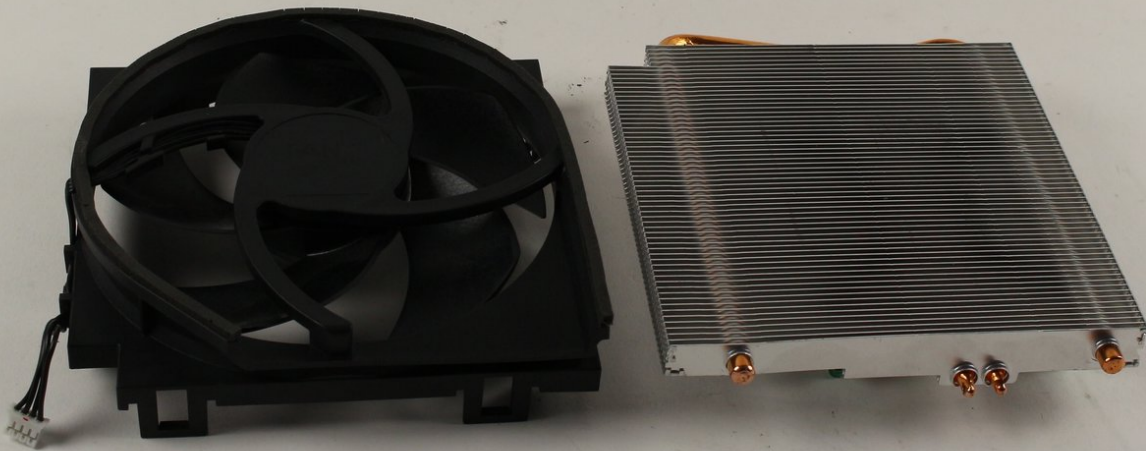




Xbox One S Heatsink/Fan Replacement

This guide will detail how to replace the Heatsink and/or fan, which are attached to each other.

Written By: Erik Ramazzini



INTRODUCTION

While the Heatsink and fan are two distinct parts, the process for replacing one or the other is exactly the same as they are attached to each other on the motherboard.



TOOLS:

- [Tweezers](#) (1)
- [iFixit Opening Tools](#) (1)
- [T10 Torx Screwdriver](#) (1)
- [Spudger](#) (1)



PARTS:

- [Xbox One S Fan](#) (1)
- [Xbox One S Heat Sink](#) (1)

Step 1 — Case



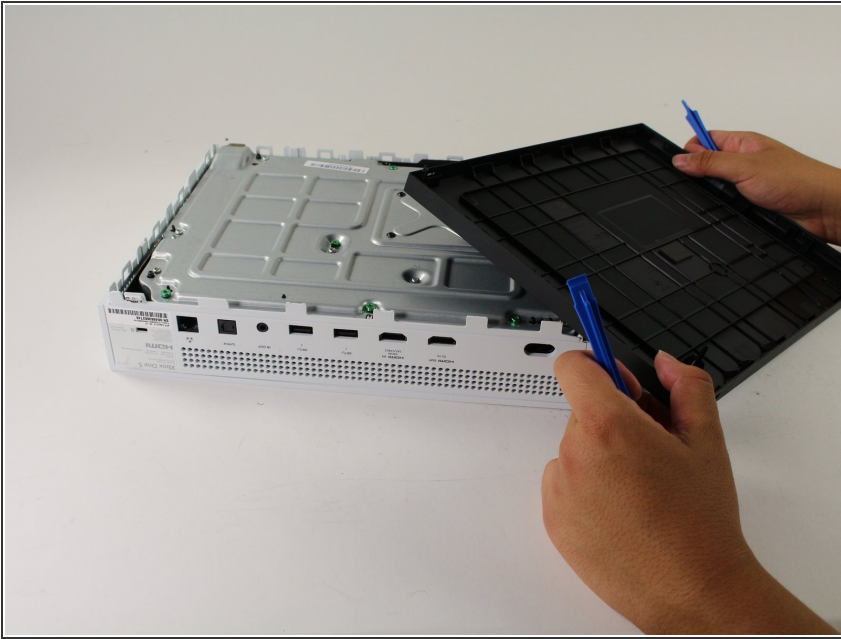
- Flip the Xbox One S so that the bottom of the case is facing upward.

Step 2



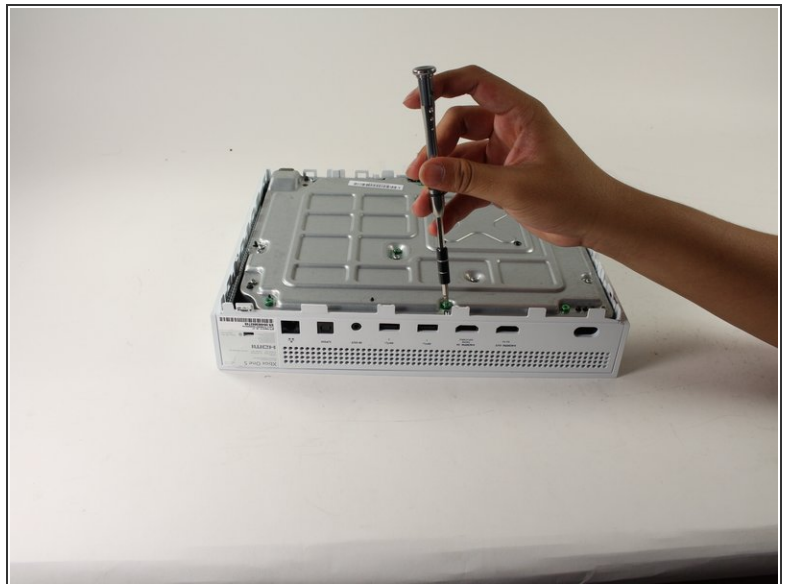
- Insert the plastic opening tool into the gap between the bottom of the case and the grated top side. Then find the clips in between that hold the case in place.
- Use the opening tool to pop the clips out. The best method is to pry the black case away from the bottom.
- ⓘ You will hear clicking sounds when you are prying the case open. It may be fairly difficult to remove the bottom.
- ⚠ It's possible that the clips may break when you remove the bottom from the case.
- ⓘ We recommend starting at one corner and sliding the prying tool along the edges of the Xbox One S. Once the first few clips are opened you can lift the cover up to find the remaining clips.

Step 3



- Once all of the clips are opened, remove the bottom part of the case.

Step 4



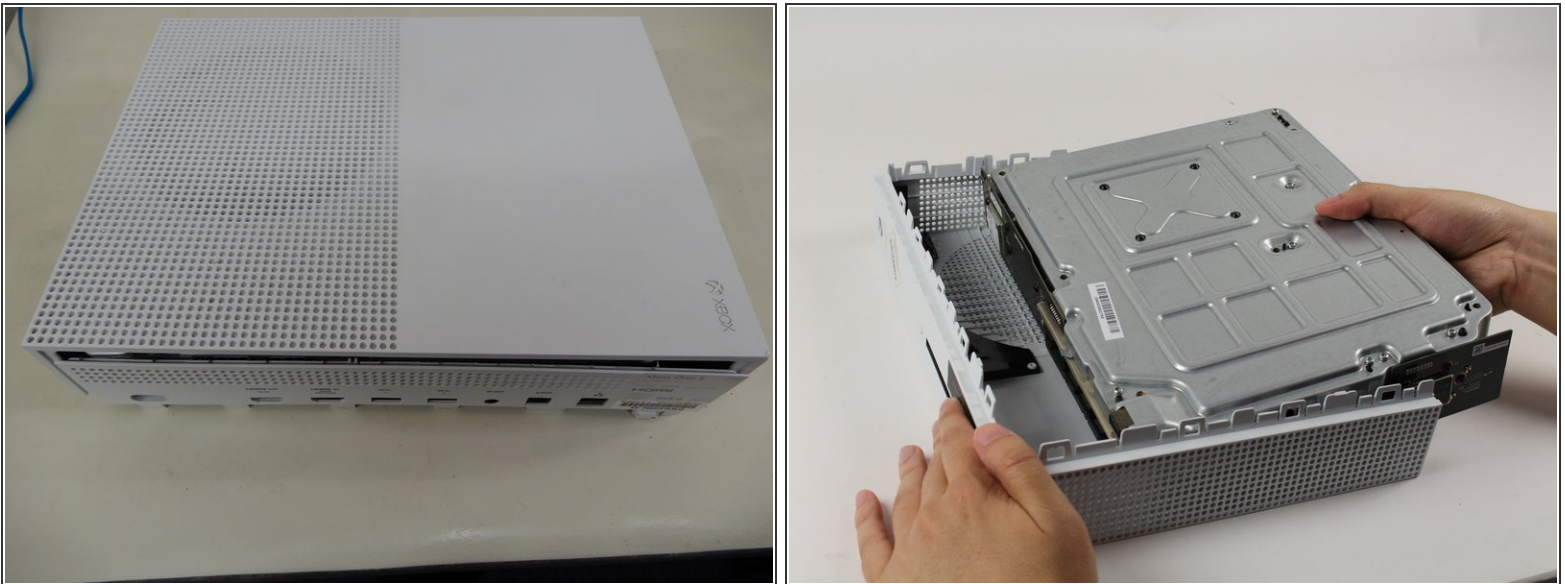
- Find all of the green screws on the metal case labeled F1 through F6.
- Take the T10 Torx screwdriver and remove the six 50 mm long screws.

Step 5



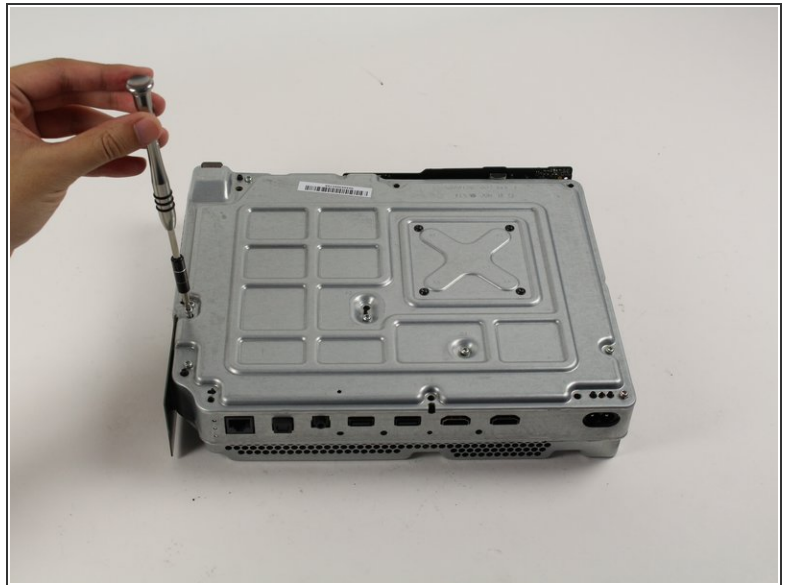
- The port cover is held in place with rivets. Insert a pry tool gently between the top cover and metal casing on both sides to prepare the cover for removal.

Step 6



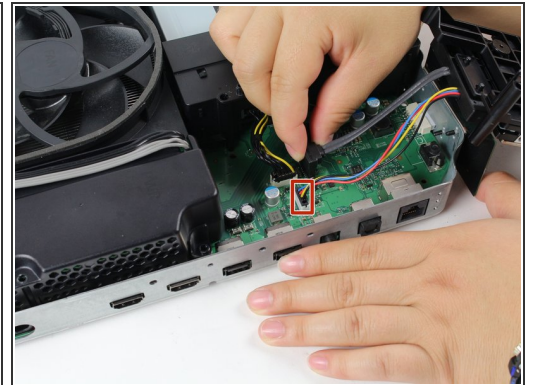
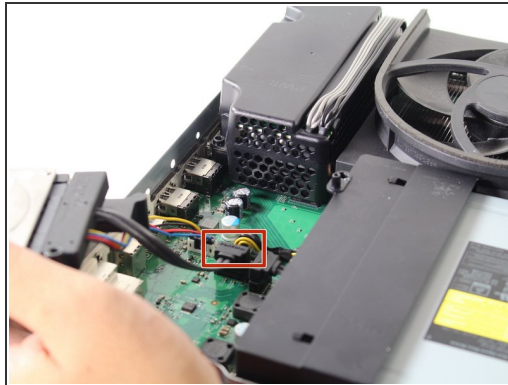
- Gently separate the interior case from the white exterior case using the appropriate method.

Step 7 — Hard Drive Assembly



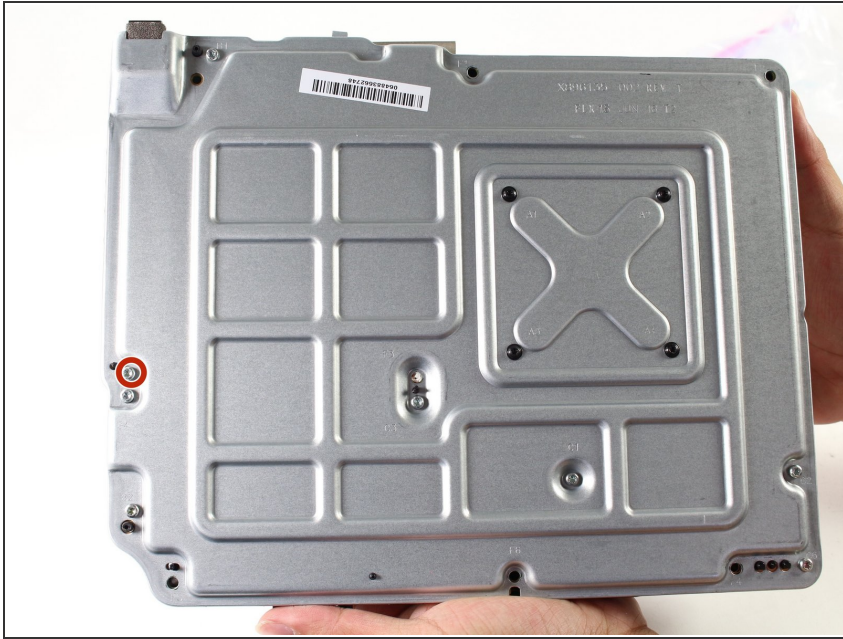
- To replace the hard drive, remove the two 10 mm T-10 Torx screws, C3 and C4, from the backside of the Xbox One S.

Step 8



- Gently disconnect the hard drive from the motherboard (at the two plastic connector bodies).

Step 9 — Optical Drive Assembly



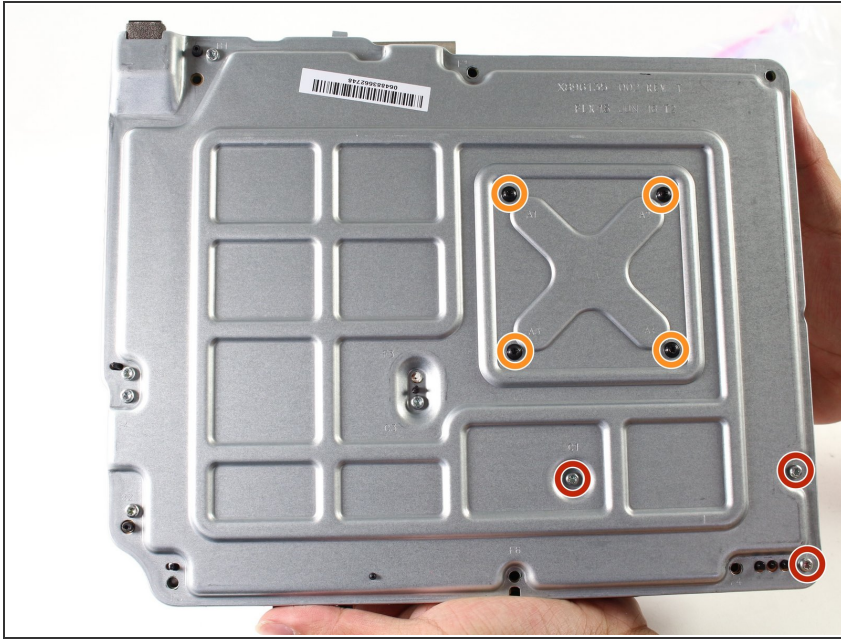
- To remove the optical disc drive, remove the silver 10 mm T-10 Torx screw labeled "C5."

Step 10



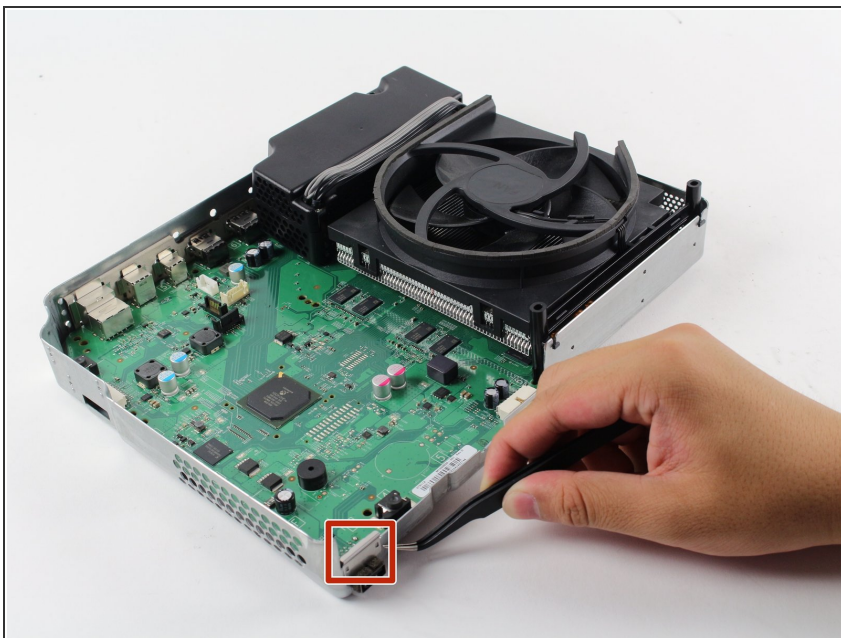
- Pull the disc drive slightly off the motherboard and disconnect the plastic connectors from the motherboard.

Step 11 — Motherboard



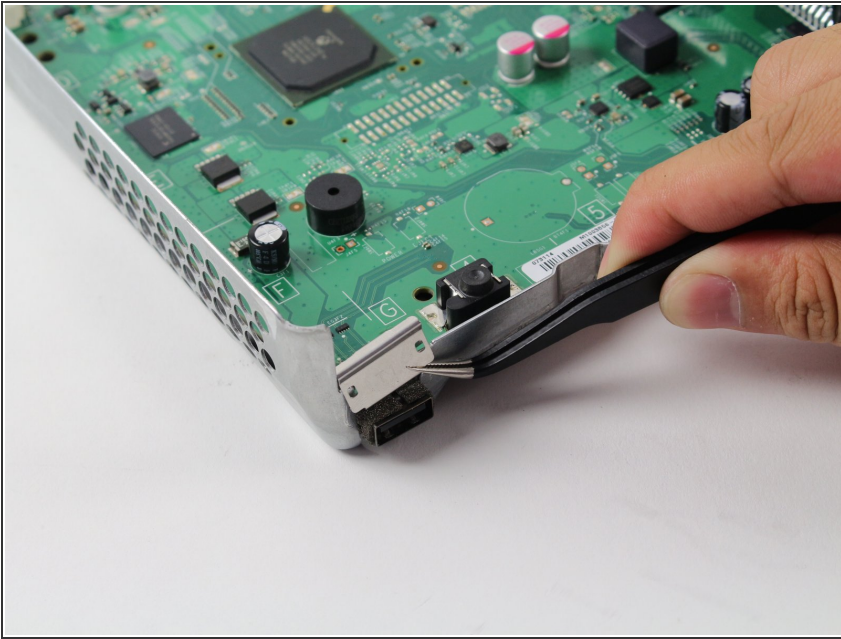
- To replace the motherboard you must remove the three silver 10 mm T-10 Torx screws labelled "C1," "C2," and "C6."
- Remove the four black 8 mm T-9 Torx screws labelled "A1," "A2," "A3," and "A4."

Step 12



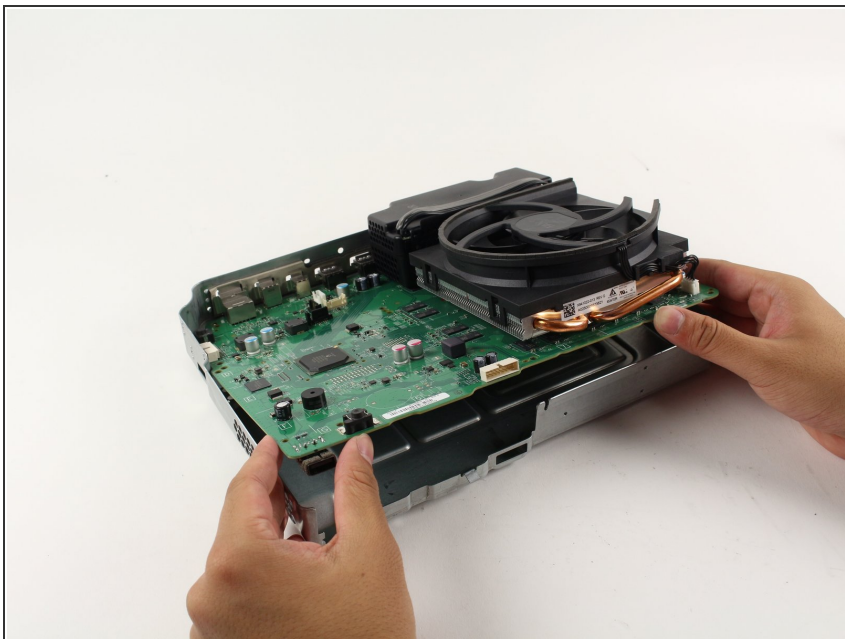
- Locate the rectangular silver clamp on the opposite corner of the power block.

Step 13



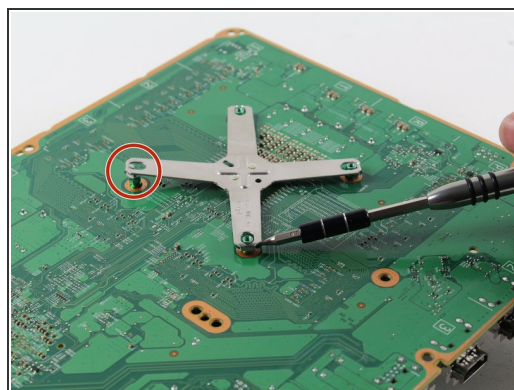
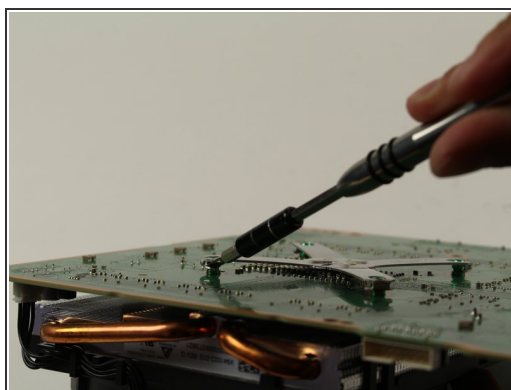
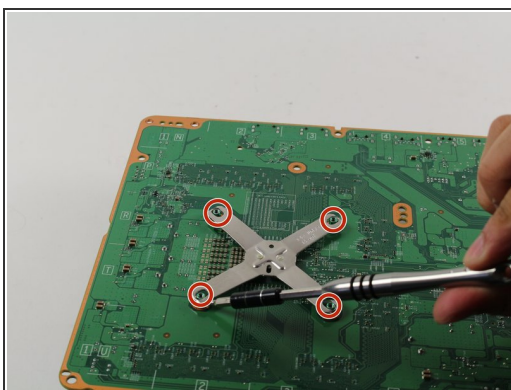
- Grab the clamp with the tweezers. Pull the clamp upward, away from the silver casing. Jiggle it back and forth like a tooth if necessary.
- ⓘ It's okay to apply a little bit of force here to get the clamp off the silver casing. The metal is bendable and can be bent/clamped back on.

Step 14



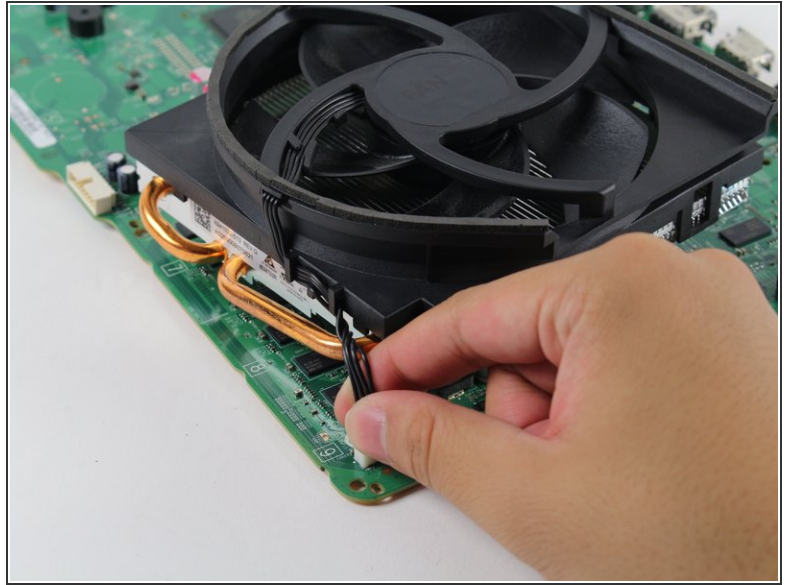
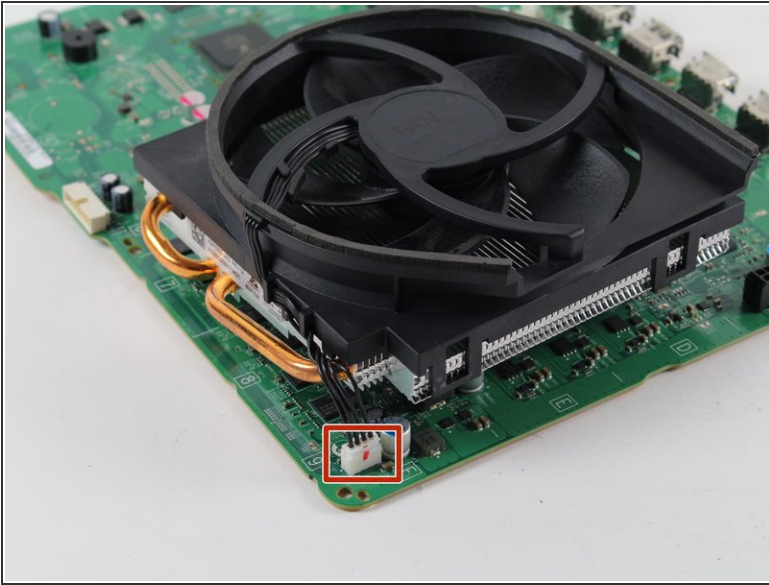
- Now that the clamp is removed, gently lift the motherboard from its edges out from the metal casing. The motherboard should come out with ease.

Step 15 — Heatsink/Fan



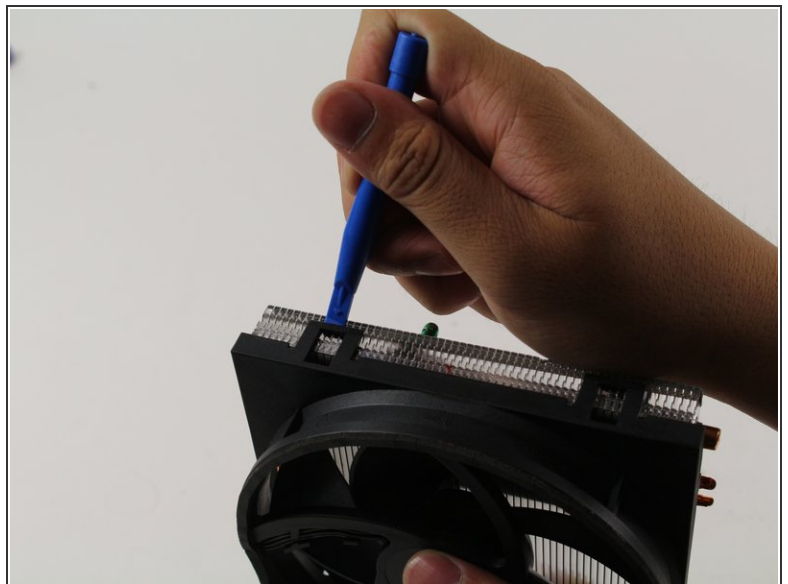
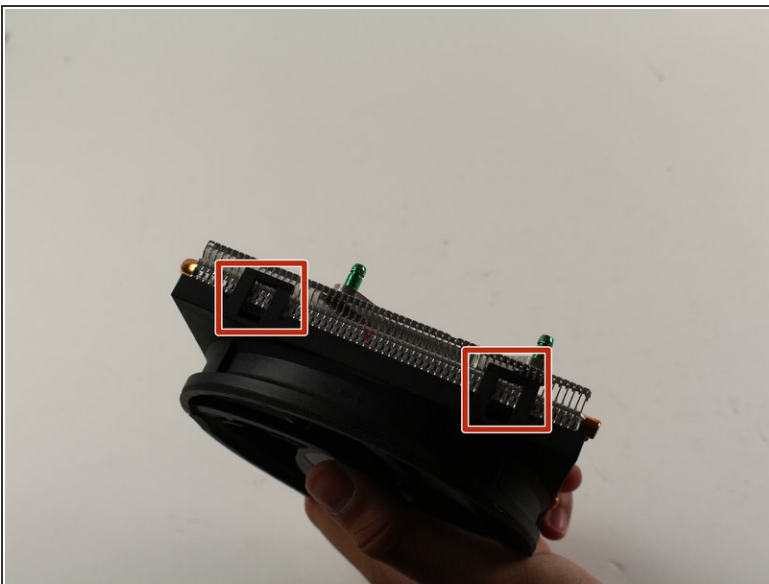
- Flip the motherboard over to the back and find the metal x-shaped bracket.
 - Use a spudger or plastic opening tool to pry the corners of the bracket off the four little green mounts.
- ⚠ These photos show a screwdriver being used to lift the bracket corners. Use a spudger or plastic opening tool to prevent damage to the motherboard.

Step 16



- Detach the fan/heatsink from the board by gently pulling up on the plastic white connectors.

Step 17



- Once the heatsink/fan is off the board, use the plastic opening tool to pry the plastic fan off the metal heatsink at the fan's rectangular clips.

i It may take a bit of force to pry the fan off the heatsink.

To reassemble your device, follow these instructions in reverse order.