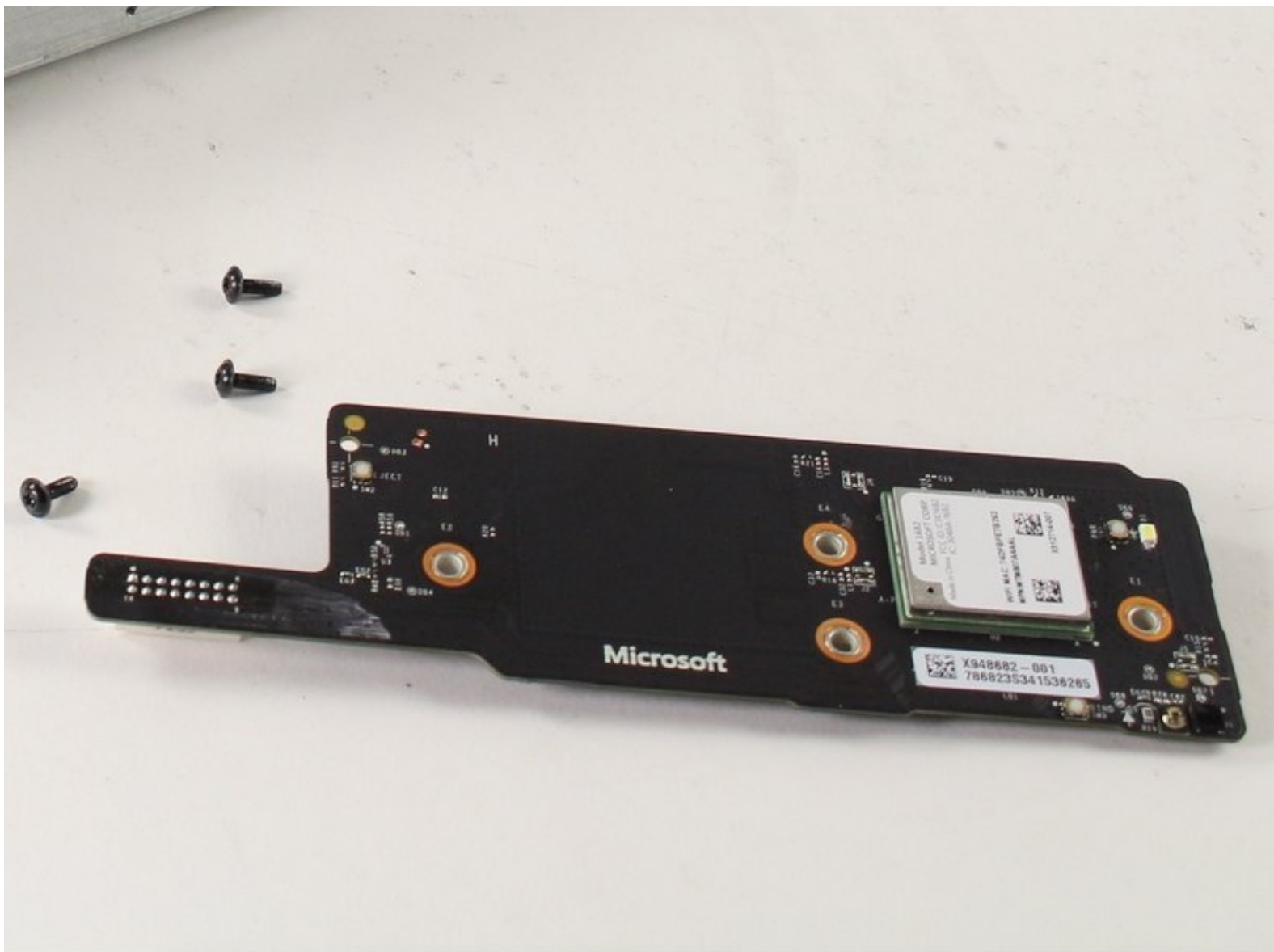




Xbox One S IR Blaster Replacement

This guide will show you how to remove the IR blaster and replace it.

Written By: Christopher Chen



INTRODUCTION

If your Xbox One S is not picking up motion signals when playing certain games follow this guide to replace your IR blaster. Make sure to check that you are within line of sight of the front of the Xbox One S and there is no barrier between the user and the device.



TOOLS:

- [iFixit Opening Tools](#) (1)
- [T10 Torx Screwdriver](#) (1)
- [T8 Torx Screwdriver](#) (1)



PARTS:

- [Xbox One S IR Blaster](#) (1)

Step 1 — Case



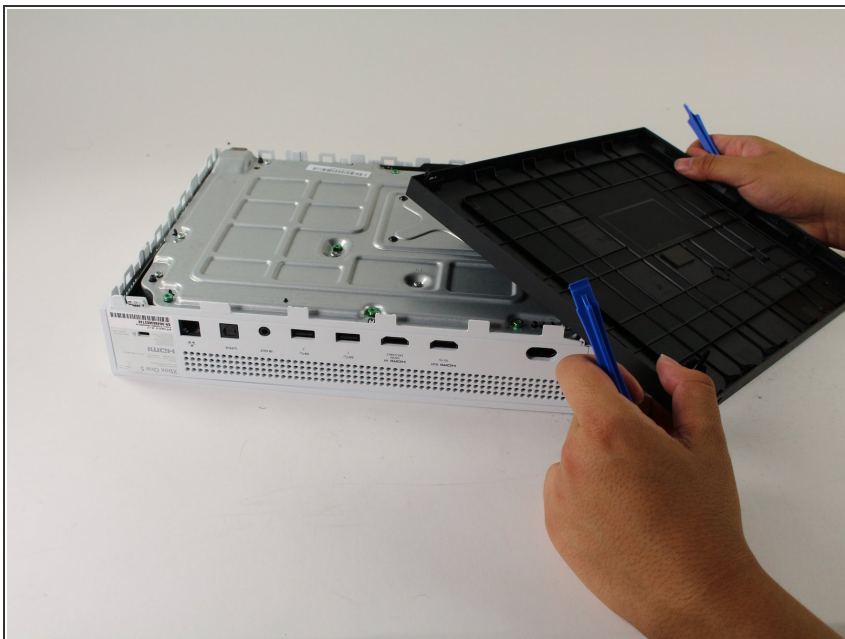
- Flip the Xbox One S so that the bottom of the case is facing upward.

Step 2



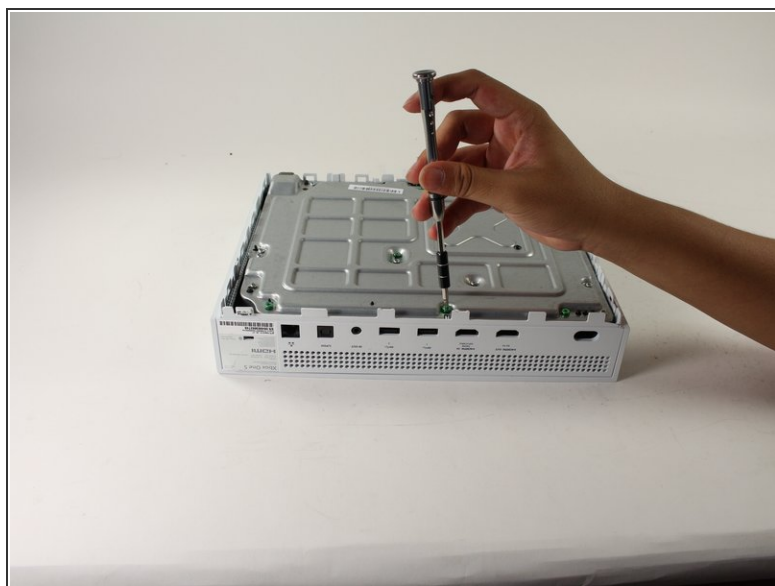
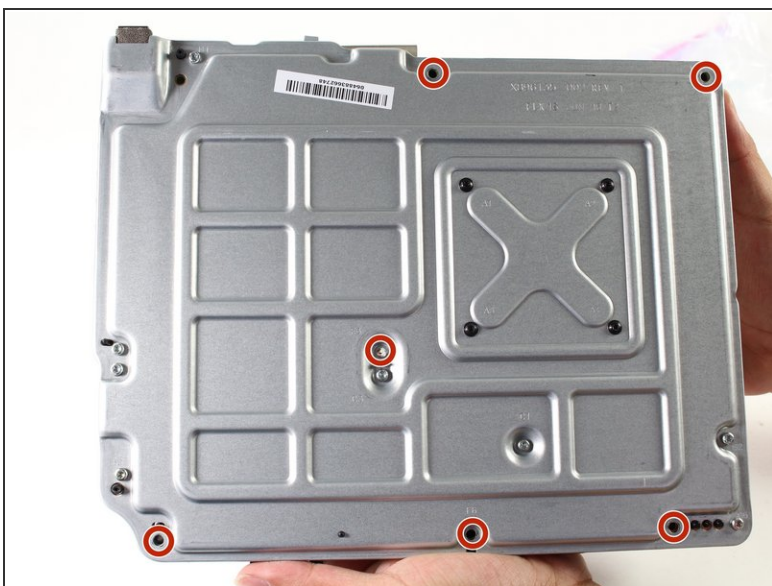
- Insert the plastic opening tool into the gap between the bottom of the case and the grated top side. Then find the clips in between that hold the case in place.
- Use the opening tool to pop the clips out. The best method is to pry the black case away from the bottom.
- ⓘ You will hear clicking sounds when you are prying the case open. It may be fairly difficult to remove the bottom.
- ⚠ It's possible that the clips may break when you remove the bottom from the case.
- ⓘ We recommend starting at one corner and sliding the prying tool along the edges of the Xbox One S. Once the first few clips are opened you can lift the cover up to find the remaining clips.

Step 3



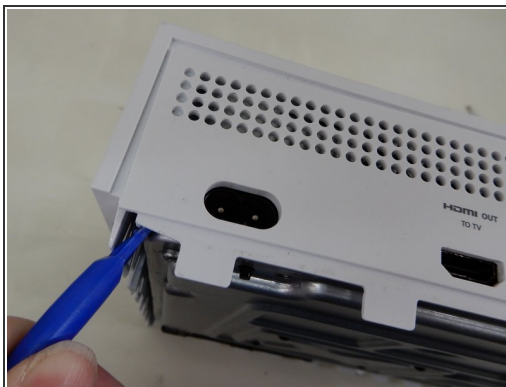
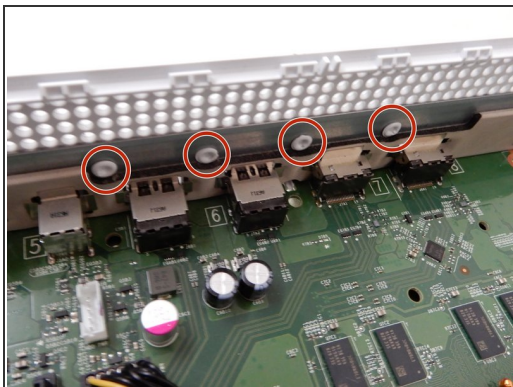
- Once all of the clips are opened, remove the bottom part of the case.

Step 4



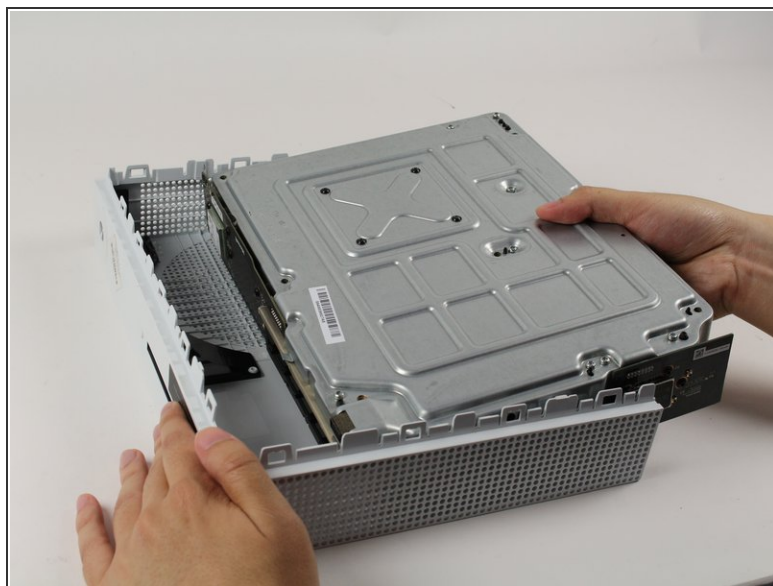
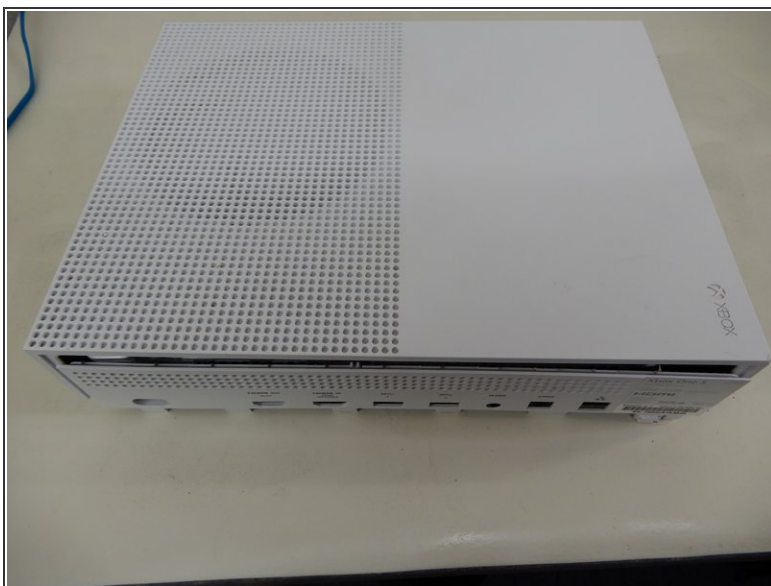
- Find all of the green screws on the metal case labeled F1 through F6.
- Take the T10 Torx screwdriver and remove the six 50 mm long screws.

Step 5



- The port cover is held in place with rivets. Insert a pry tool gently between the top cover and metal casing on both sides to prepare the cover for removal.

Step 6



- Gently separate the interior case from the white exterior case using the appropriate method.

Step 7 — IR Blaster



- The IR blaster can be identified on one of the sides of the interior case. It will be next to the disc drive and near the fan.

Step 8



- Use a Torx T8 screwdriver to remove the four 15mm screws with orange circles around them.
- After the screws are removed gently pull the IR blaster off the case.

To reassemble your device, follow these instructions in reverse order.