



# Xbox One S Power Block Replacement

This guide will detail how to replace the power block attached to the motherboard.

Written By: Erik Ramazzini



## INTRODUCTION

The power block's connector to the motherboard is difficult to disconnect by hand initially. While unnecessary, we highly recommend removing the motherboard from the silver casing first to access the power block's connector.



### TOOLS:

- [iFixit Opening Tools](#) (1)
- [T10 Torx Screwdriver](#) (1)
- [Flathead 3/32" or 2.5 mm Screwdriver](#) (1)
- [Tweezers](#) (1)



### PARTS:

- [Xbox One S Power Supply](#) (1)

## Step 1 — Case



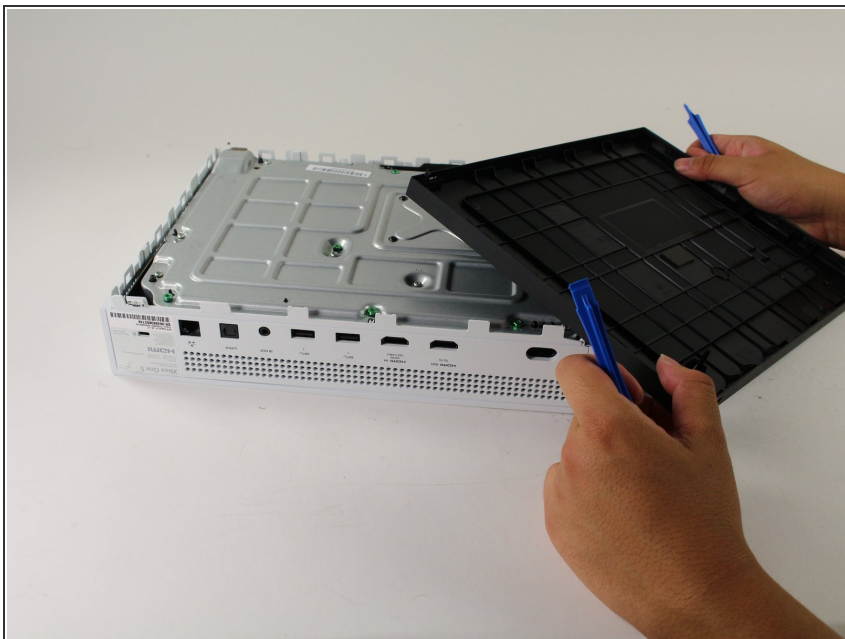
- Flip the Xbox One S so that the bottom of the case is facing upward.

## Step 2



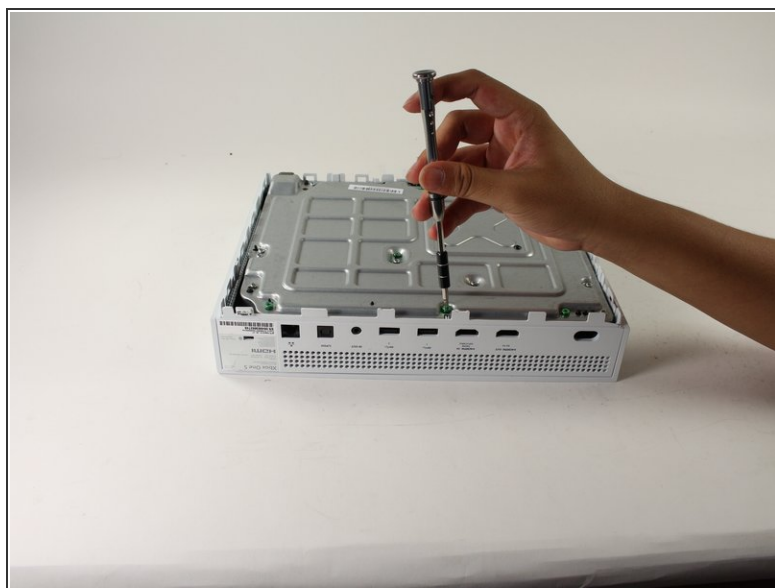
- Insert the plastic opening tool into the gap between the bottom of the case and the grated top side. Then find the clips in between that hold the case in place.
  - Use the opening tool to pop the clips out. The best method is to pry the black case away from the bottom.
  - ⓘ You will hear clicking sounds when you are prying the case open. It may be fairly difficult to remove the bottom.
- ⚠ It's possible that the clips may break when you remove the bottom from the case.
- ⓘ We recommend starting at one corner and sliding the prying tool along the edges of the Xbox One S. Once the first few clips are opened you can lift the cover up to find the remaining clips.

### Step 3



- Once all of the clips are opened, remove the bottom part of the case.

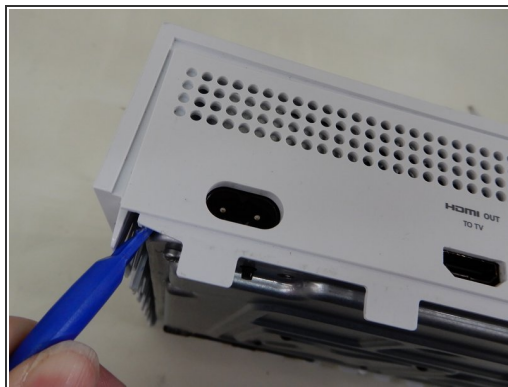
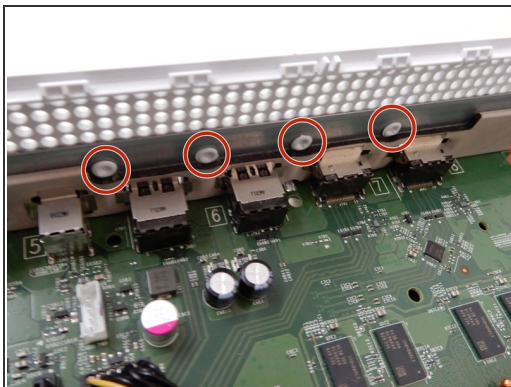
### Step 4



- Find all of the green screws on the metal case labeled F1 through F6.
- Take the T10 Torx screwdriver and remove the six 50 mm long screws.

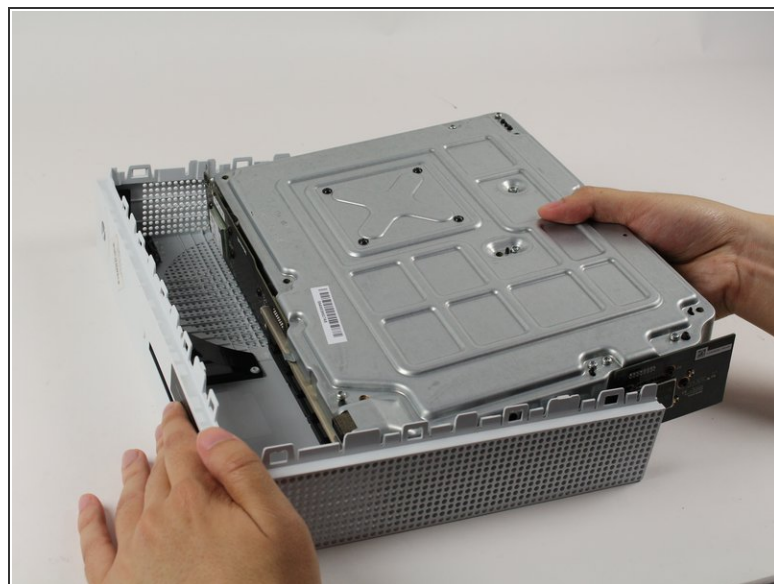


## Step 5



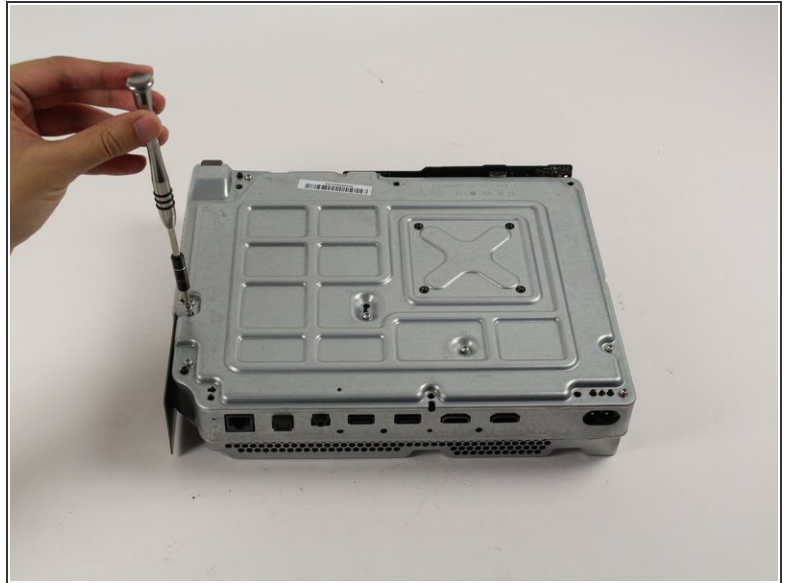
- The port cover is held in place with rivets. Insert a pry tool gently between the top cover and metal casing on both sides to prepare the cover for removal.

## Step 6



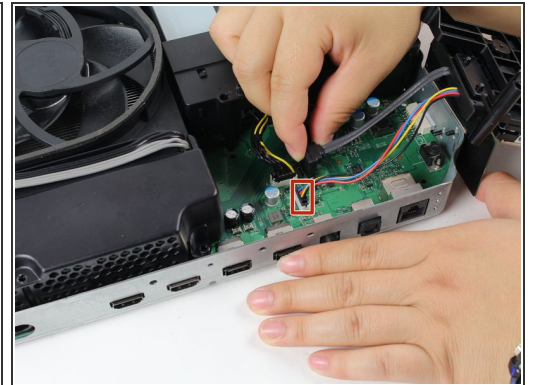
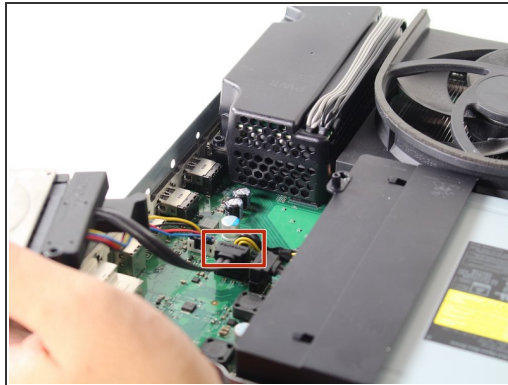
- Gently separate the interior case from the white exterior case using the appropriate method.

## Step 7 — Hard Drive Assembly



- To replace the hard drive, remove the two 10 mm T-10 Torx screws, C3 and C4, from the backside of the Xbox One S.

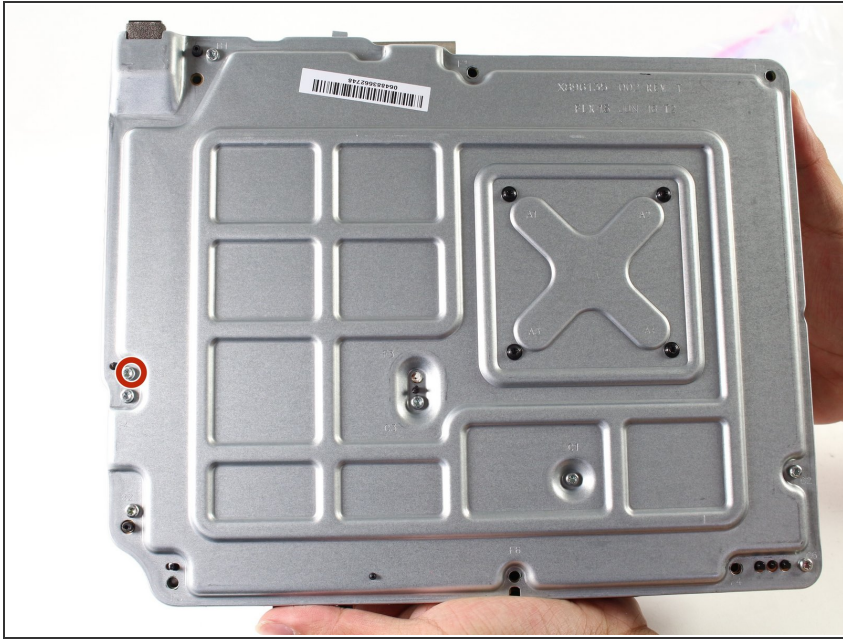
## Step 8



- Gently disconnect the hard drive from the motherboard (at the two plastic connector bodies).



## Step 9 — Optical Drive Assembly



- To remove the optical disc drive, remove the silver 10 mm T-10 Torx screw labeled "C5."

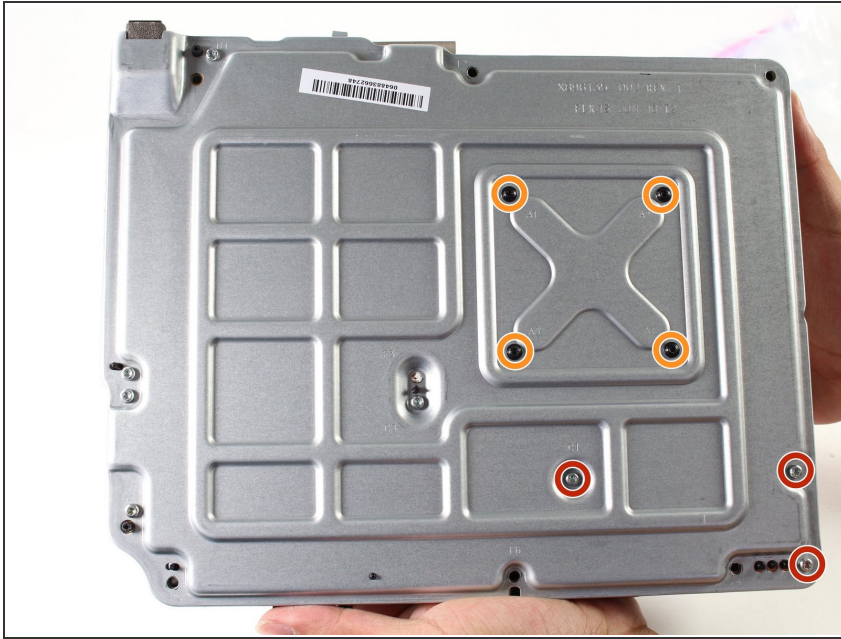
## Step 10



- Pull the disc drive slightly off the motherboard and disconnect the plastic connectors from the motherboard.

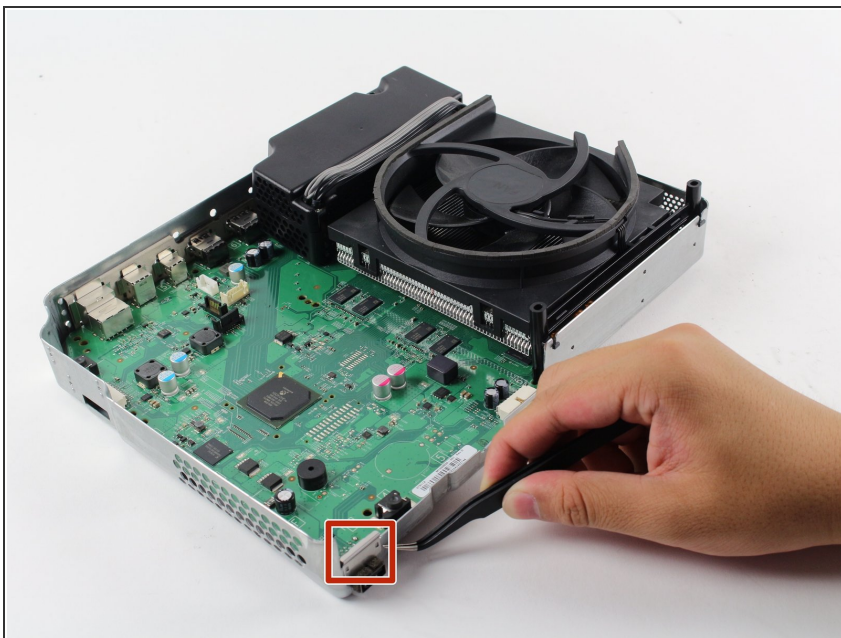


## Step 11 — Motherboard



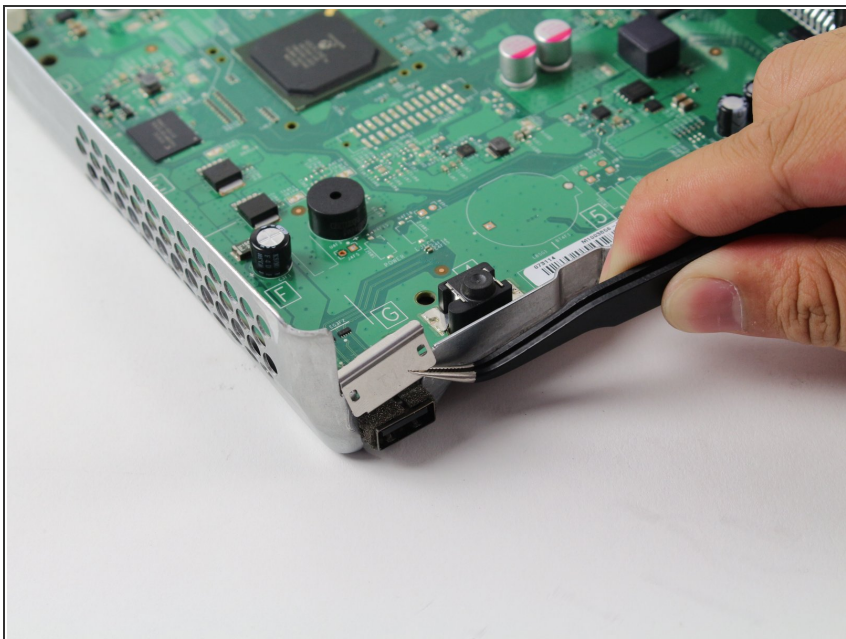
- To replace the motherboard you must remove the three silver 10 mm T-10 Torx screws labelled "C1," "C2," and "C6."
- Remove the four black 8 mm T-9 Torx screws labelled "A1," "A2," "A3," and "A4."

## Step 12



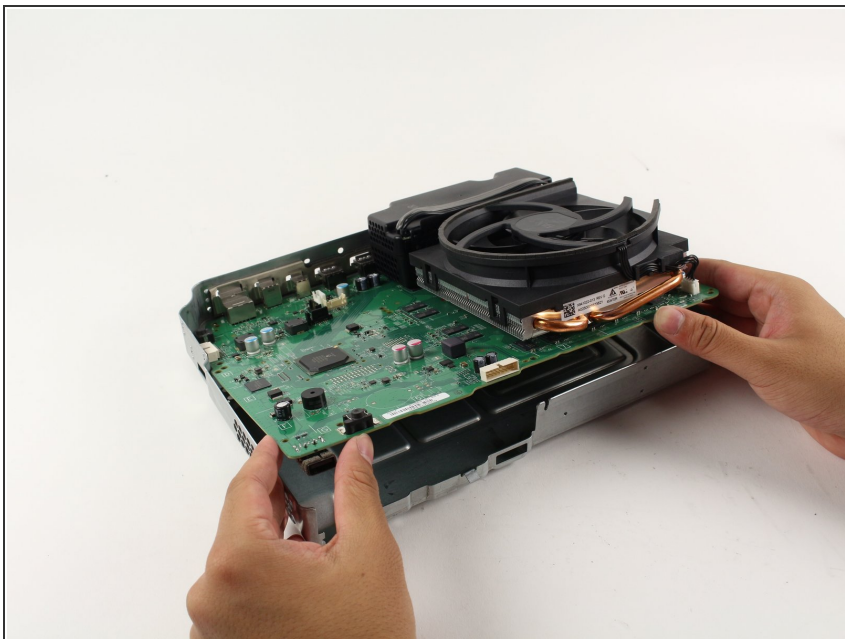
- Locate the rectangular silver clamp on the opposite corner of the power block.

## Step 13



- Grab the clamp with the tweezers. Pull the clamp upward, away from the silver casing. Jiggle it back and forth like a tooth if necessary.
- ⓘ It's okay to apply a little bit of force here to get the clamp off the silver casing. The metal is bendable and can be bent/clamped back on.

## Step 14



- Now that the clamp is removed, gently lift the motherboard from its edges out from the metal casing. The motherboard should come out with ease.

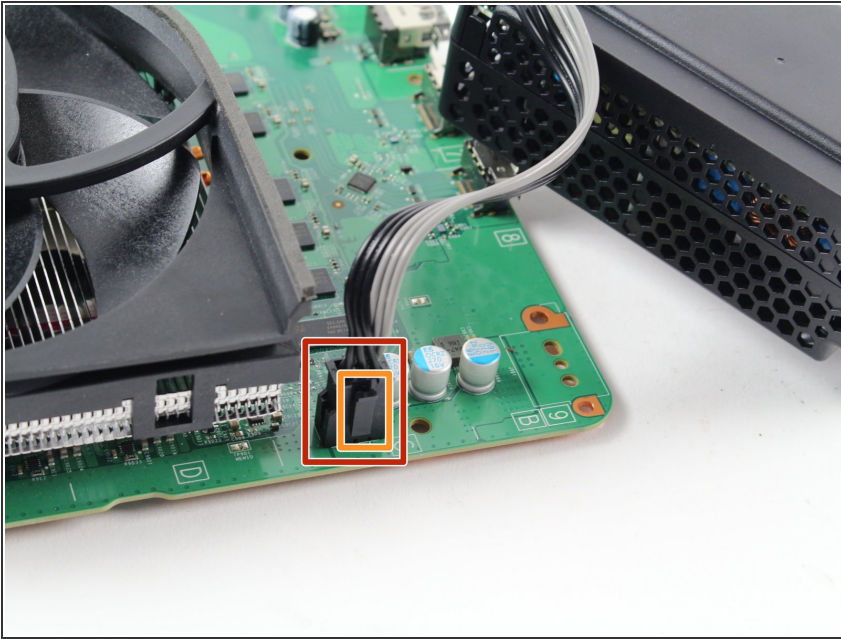
## Step 15 — Power Block



- Gently lift the power block off the motherboard

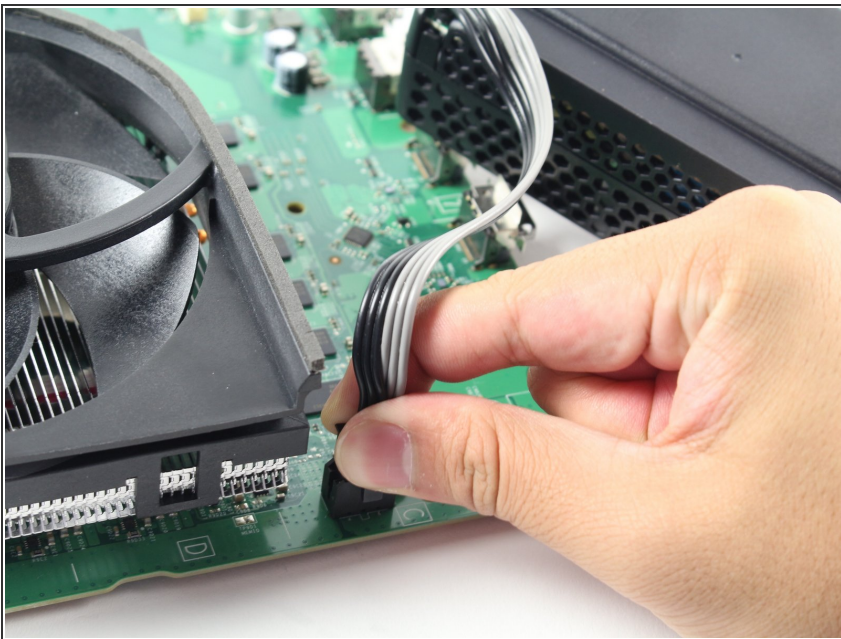


## Step 16



- Locate the black connector that joins the power block to the motherboard.
- ⓘ The protruding rectangular part of the plastic connector, shown by the orange marker, is a locking tab.

## Step 17



- Grab the connector as shown, pinch the small black locking tab, and pull firmly upward to detach the power block from the motherboard .

To reassemble your device, follow these instructions in reverse order.