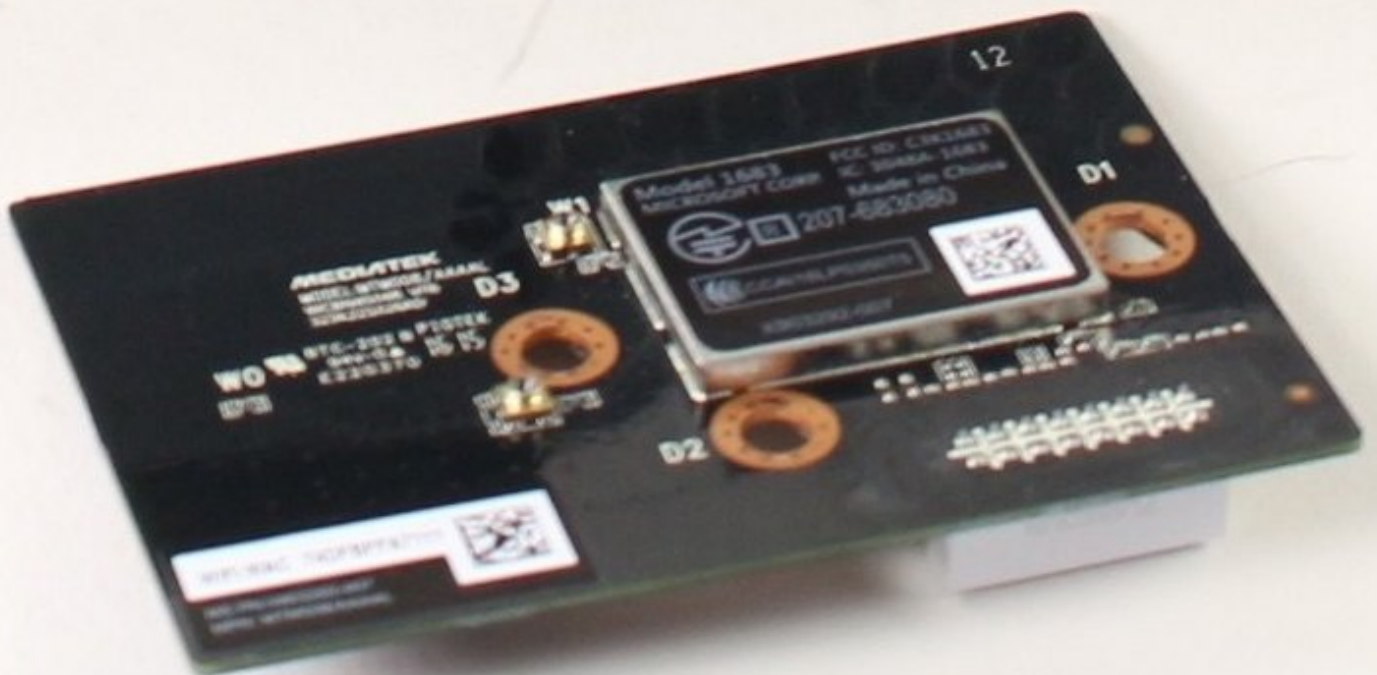




Xbox One S WiFi Card Replacement

This guide will show you how to remove the WiFi card and replace it.

Written By: Victoria Law



INTRODUCTION

So you've confirmed your Xbox One S cannot connect to any Wi-Fi sources, but other devices can. Follow these steps to replace the Wi-Fi card.



TOOLS:

- [iFixit Opening Tools](#) (1)
- [T10 Torx Screwdriver](#) (1)



PARTS:

- [Xbox One S Wi-Fi Board](#) (1)

Step 1 — Case



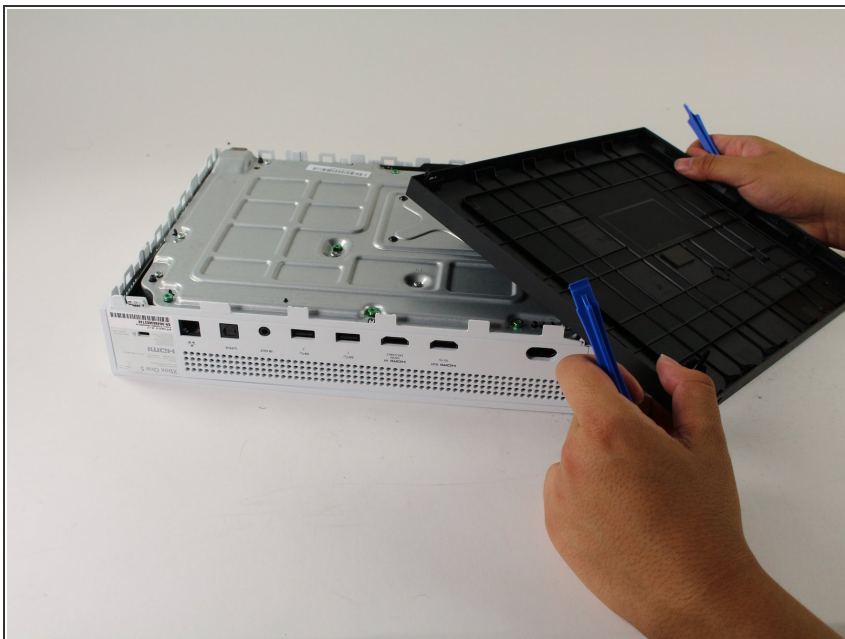
- Flip the Xbox One S so that the bottom of the case is facing upward.

Step 2



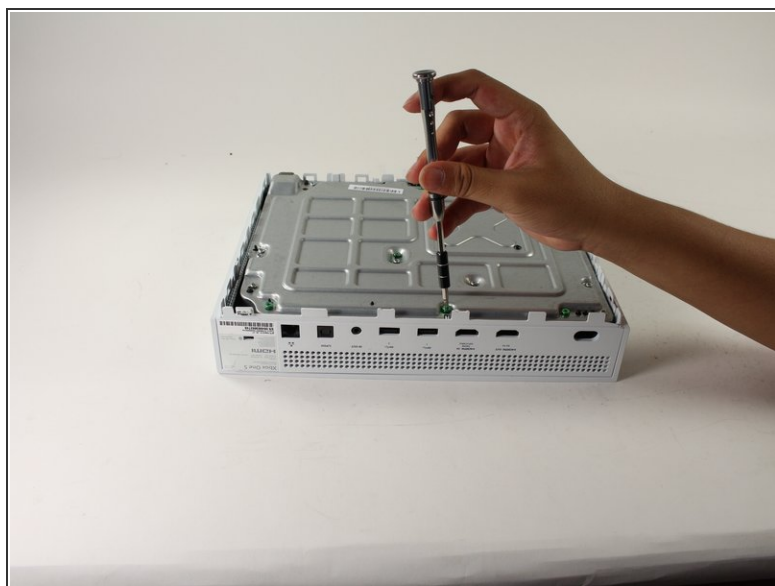
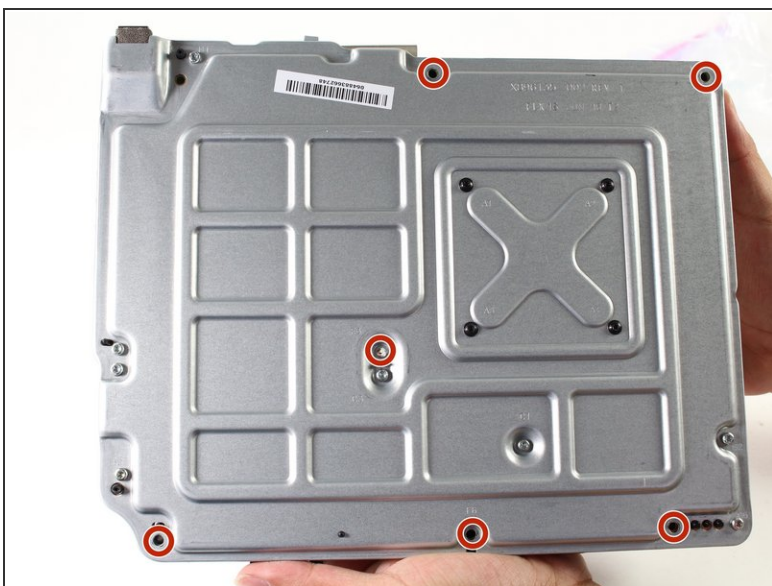
- Insert the plastic opening tool into the gap between the bottom of the case and the grated top side. Then find the clips in between that hold the case in place.
- Use the opening tool to pop the clips out. The best method is to pry the black case away from the bottom.
- ⓘ You will hear clicking sounds when you are prying the case open. It may be fairly difficult to remove the bottom.
- ⚠ It's possible that the clips may break when you remove the bottom from the case.
- ⓘ We recommend starting at one corner and sliding the prying tool along the edges of the Xbox One S. Once the first few clips are opened you can lift the cover up to find the remaining clips.

Step 3



- Once all of the clips are opened, remove the bottom part of the case.

Step 4



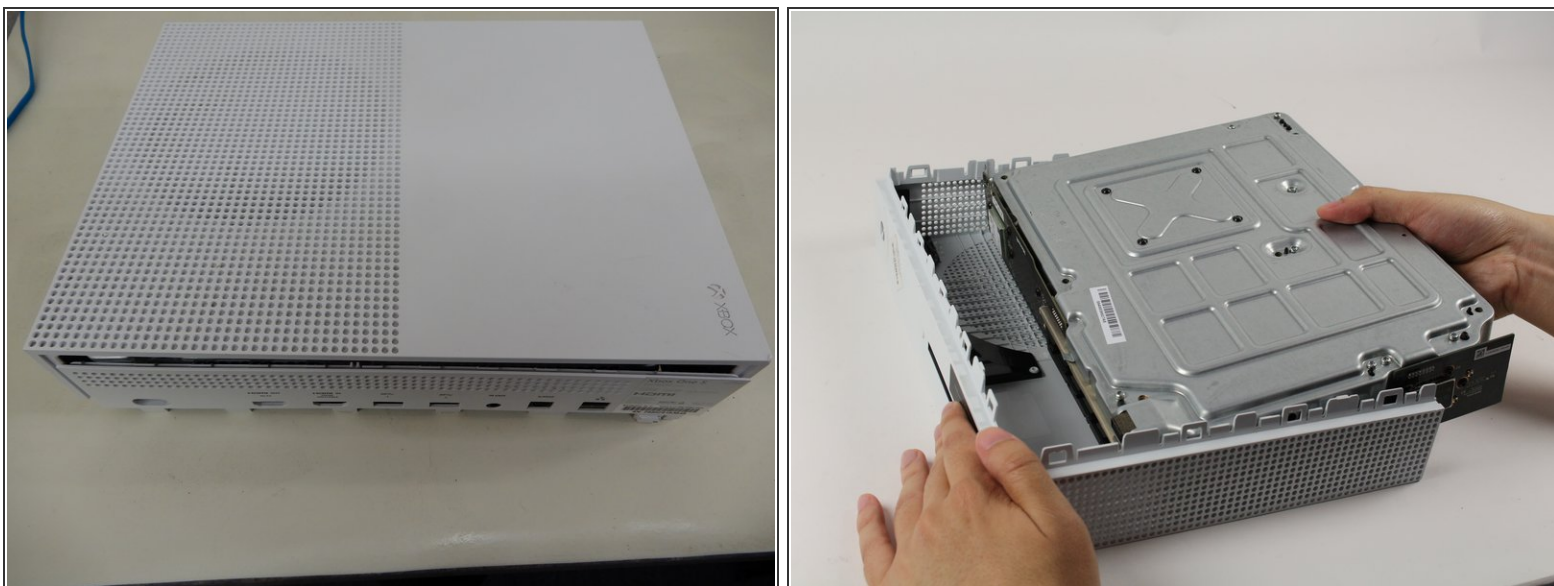
- Find all of the green screws on the metal case labeled F1 through F6.
- Take the T10 Torx screwdriver and remove the six 50 mm long screws.

Step 5



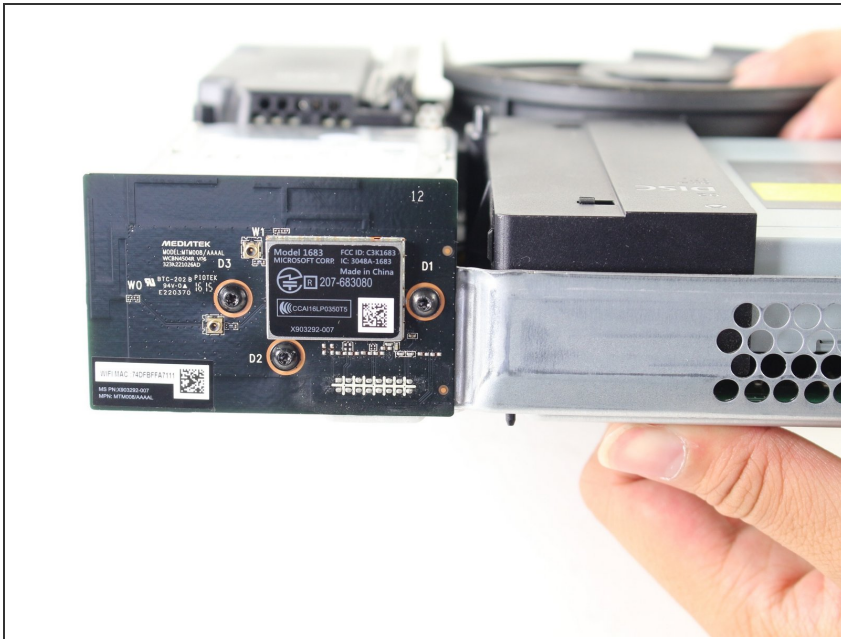
- The port cover is held in place with rivets. Insert a pry tool gently between the top cover and metal casing on both sides to prepare the cover for removal.

Step 6



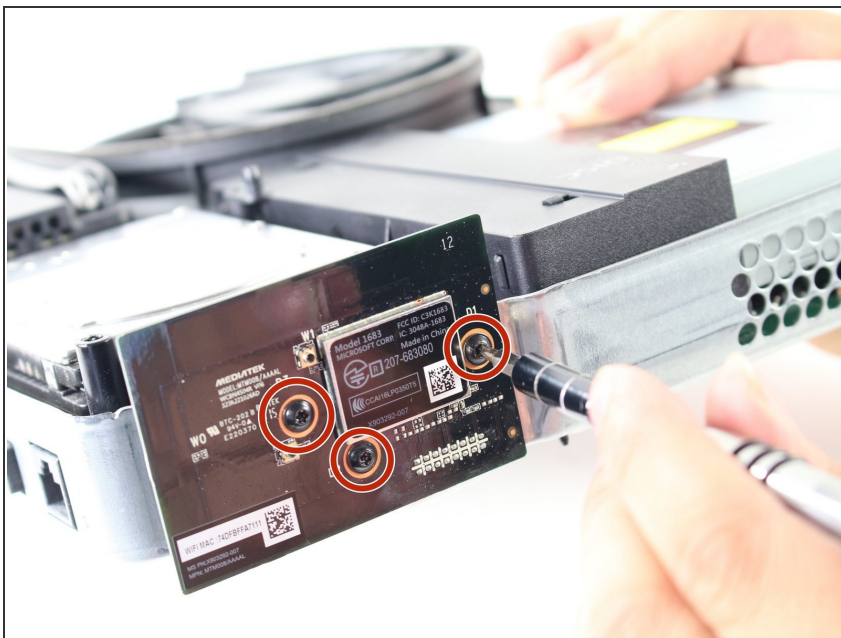
- Gently separate the interior case from the white exterior case using the appropriate method.

Step 7 — WiFi Card



- Search the sides of the interior case for the Wi-Fi card. It should be across from the hard drive.

Step 8



- Remove the black 15mm screws with orange circles around them (there should be 3 of them).
- After removing the screws, gently detach the Wi-Fi card.

To reassemble your device, follow these instructions in reverse order.