



Xbox One Wireless Controller Model 1708 3.5 mm Audio Port Replacement

This guide will teach you how to access and replace the 3.5 mm Audio Port on your Xbox One Wireless Controller Model 1708.

Written By: Dylan Gross



This document was generated on 2019-09-18 03:39:25 AM (MST).

INTRODUCTION

The audio port on your Xbox Controller could have connection issues with audio devices or not provide any sound at all. If this is occurring it might be necessary to replace the 3.5 mm audio port. This guide will teach you how to access and remove the 3.5 mm audio port on your Xbox One Wireless Controller Model 1708.



TOOLS:

- [iFixit Opening Tools](#) (1)
 - [TR9 Torx Security Screwdriver](#) (1)
 - [Tweezers](#) (1)
-

Step 1 — Cover Plate



- Slide the battery cover toward the top of the controller to remove it.
- Lift up the batteries or the battery pack from the battery compartment.

Step 2



- Insert a plastic opening tool into the top seam, and gently work the opening tool to the bottom of the controller.
- Continue using the opening tool to gently pry the side plate off of the controller.
- Repeat this process for the second side plate.

Step 3



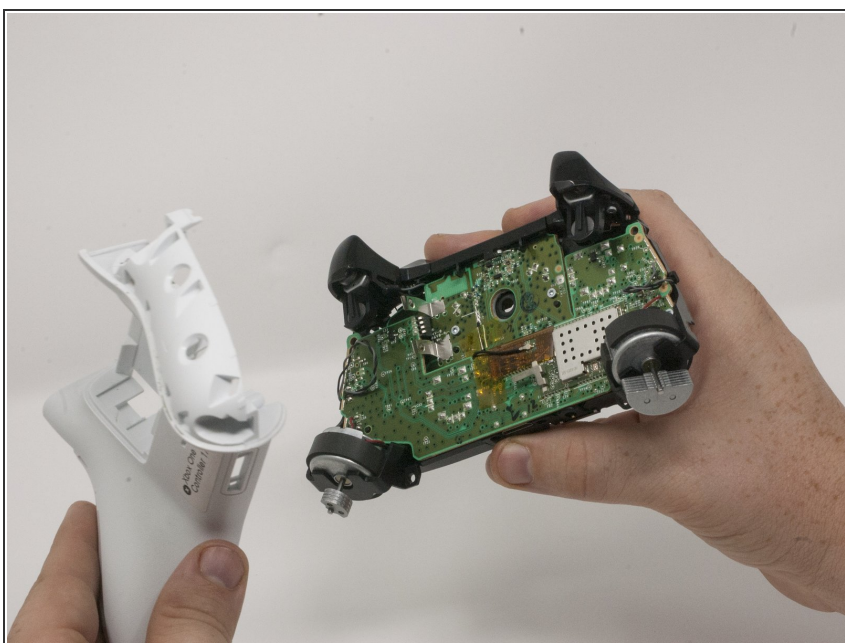
- Gently peel the battery label or punch a hole in the center of the sticker in the battery compartment to reveal the hidden screw.
- Remove the five 9mm torx-9 security screws from the back of the controller.

Step 4



- Orient the controller so the front plate is facing up.
- Lift the front cover off of the controller.

Step 5



- Turn the controller face down and gently lift the rear plate.

Step 6 — Directional Pad



- Turn the device over and remove the directional pad by gently pulling it away from the controller.

Step 7 — Joysticks



- Pull the joysticks off of the controller.

Step 8 — Top Motherboard



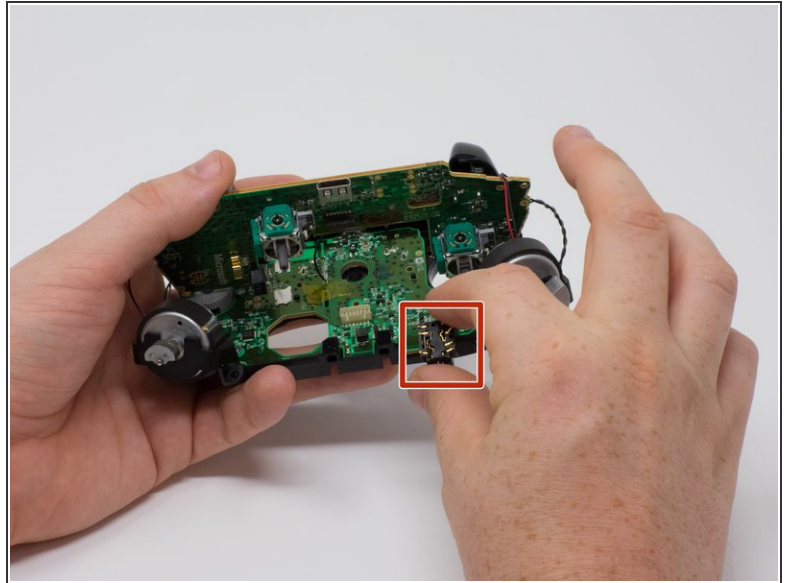
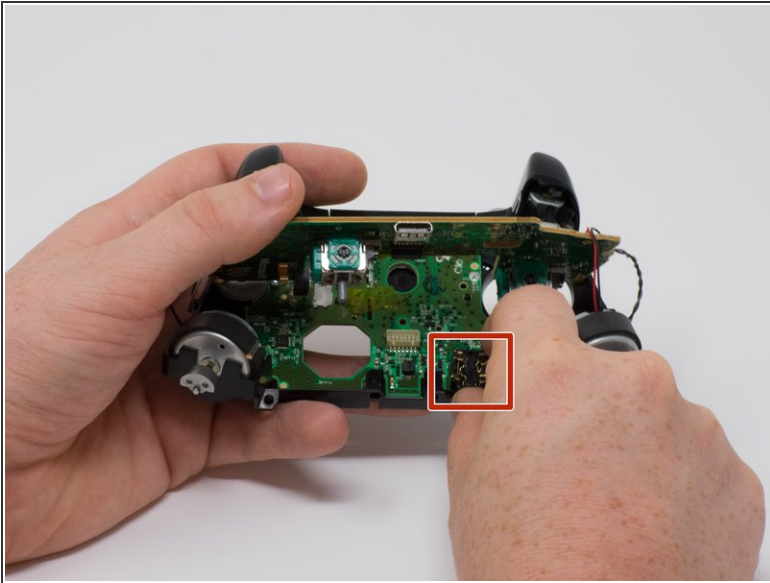
- ⚠ If the rumble motors fall out of frame, the wires may disconnect from the motherboard. The wires will have to be soldered to reattach the motor.
- Turn the device over and remove the two 70mm torx-6 screws in the bottom left and right corners.

Step 9



- Firmly grasp the top and bottom motherboards in opposite hands, then gently pull them apart.
- ⓘ The top motherboard is still connected to the bottom motherboard. To fully separate the top motherboard, you will need to use a soldering iron.

Step 10 — 3.5 mm Audio Port



- Remove the audio port from the bottom mother board.

To reassemble your device, follow these instructions in reverse order.